



AGENDA

N.C. WILDLIFE RESOURCES COMMISSION

March 10, 2011, 9:00 a.m.

1751 Varsity Drive

NCWRC Conference Room, 5th Floor

Raleigh, North Carolina

CALL TO ORDER - *Vice Chairman Chuck Bennett*

PLEDGE OF ALLEGIANCE

INVOCATION - *Commissioner Mitch St. Clair, Sr.*

RECOGNITION OF VISITORS

MANDATORY ETHICS INQUIRY - North Carolina General Statute 138A-15(e) mandates that the Commission Chair shall remind all Commissioners of their duty to avoid conflicts of interest and appearances of conflict under this Chapter, and that the chair also inquire as to whether there is any known conflict of interest or appearance of conflict with respect to any matters coming before the Commission at this time. It is the duty of each Commissioner who is aware of such personal conflict of interest or of an appearance of a conflict, to notify the Chair of the same. *Vice Chairman Chuck Bennett*

APPROVAL OF MINUTES - Take action on the January 13, 2011 Wildlife Resources Commission meeting minutes as written in the exhibit and distributed to members (**EXHIBIT A**)

ADMINISTRATION

Financial Status Report - Receive a financial status report on the Wildlife Operating Fund and Wildlife Endowment Fund - *Tommy Clark, Budget Officer - Budget, Planning and Audit* (**EXHIBIT B**)

SPECIAL RECOGNITION

Special Presentation - Special recognition of former North Carolina Representative Jim Gulley
– *Vice Chairman Bennett*

INLAND FISHERIES

Fisheries Update - Receive a staff update on activities of the Division of Inland Fisheries - *Bob Curry, Inland Fisheries Division Chief*

Spotlight: Restoring North Carolina's Rivers – receive an update on agency activities for conserving priority aquatic species – *Steve Fraley, Western Aquatic Wildlife Diversity Coordinator*

WILDLIFE MANAGEMENT

Wildlife Management Update – Receive an update on the activities of the Division of Wildlife Management – *Dr. David Cobb, Wildlife Management Division Chief*

Property Related Issues – Consider approval for staff coordination with the State Property Office to seek appropriate funding for the following proposed Game Land property acquisitions – *Dr. Cobb (EXHIBIT C)*

- Voice of America Tract – Beaufort County
- Piedmont Land Conservancy Tracts – Alleghany and Surry counties

Property Purchase Request, Currituck County – Consider a request from Currituck County to purchase 56 acres of state-owned property to accommodate state and federal regulations associated with a spray field and airport – *Dr. Cobb (EXHIBIT D)*

Land Acquisitions Update – Receive a regular staff update on the status of land acquisitions – *Dr. Cobb (EXHIBIT E)*

ENGINEERING SERVICES

Boating Access Area Utility Easement Request, Dare County - Consider staff recommendation to grant a utility easement to Dare County at the Bowsertown Boating Access Area in Manteo - *Erik Christofferson, Engineering Services Division Chief (EXHIBIT F)*

TECHNOLOGY PRESENTATION

SharePoint Introduction – Receive an introductory presentation about SharePoint, a document storage and sharing web site – *Todd Leck, Network Manager*

COMMITTEE REPORTS

Small Game Committee Report – *Bobby Purcell, Chairman*

Big Game Committee Report - *David Hoyle, Jr., Chairman*

Joint Cold Water Fisheries/Land Use and Access Committee Report – *Martin Lewis and Doug Parsons, Committee Chairs*

Education, Marketing and Outreach Committee Report – *Dell Murphy, Chairman*

Migratory Birds, Waterfowl Committee Report – *Maughan Hull, Chairman*

COMMENTS BY VICE CHAIRMAN – *Chuck Bennett*

COMMENTS BY EXECUTIVE DIRECTOR – *Gordon Myers*

ADJOURN

EXHIBIT A

March 10, 2011



MINUTES
January 13, 2011
N. C. Wildlife Resources Commission Meeting
Raleigh, North Carolina

The January 13, 2011 meeting of the North Carolina Wildlife Resources Commission was called to order by *Chairman* Steve Windham at 8:55 a.m. in the Commission Room at Wildlife Resources Commission headquarters in Raleigh. Commissioners absent were Bobby Purcell (out of town), Randy Allen (weather), Martin Lewis (family illness), and Doug Parsons (funeral). Commissioner Dell Murphy was present by teleconference.

Commissioner David Hoyle, Jr. led the Pledge of Allegiance. Commissioner Chuck Bennett gave the invocation.

MANDATORY ETHICS INQUIRY

Chairman Windham advised the Commission of the mandatory ethics inquiry as presented in the agenda.

WELCOME

Chairman Windham welcomed Commissioners and guests, including North Carolina Senator Edward Jones and Wildlife Officers Jay Rivenbark, William Caulk, and Mark Dutton.

COMMISSIONER ATTENDANCE

Ray White	Wes Seegars	Mitch St. Clair
Chuck Bennett	Eugene Price	Maughan Hull
David Hoyle, Jr.	Dalton Ruffin	Dell Murphy (by telephone)
Joe Barker	John Litton Clark	Berkley Skinner
Durwood Laughinghouse	Steve Windham	Nat Harris

VISITORS

Senator Edward Jones – N.C. Senate
Ramon Bell – NCBA
Tommy Kimball – NC Bowhunters Association
J. R. Stone – NCBA
Sonia Rivenbark
Josh Rivenbark
Mark Beason
Ned Jones – N.C. Trout Unlimited
Henri McClees – McClees Consulting

Harold Dorsett
Debbie Caulk
Gary Caulk
Leslie Tegle
Cheryl S. Williams
Roy C. Williams, Jr.
T. Jerry Williams
Greg Culpepper

MINUTES

Commissioner David Hoyle, Jr. made a motion to approve the November 4, 2010 Wildlife Resources Commission Meeting minutes. The motion was seconded by Commissioner Nat Harris and carried. **The Minutes**, titled Exhibit A, are hereby incorporated into the official record of this meeting.

ADMINISTRATION

Tommy Clark, *Budget Officer*, gave the financial status report on the Wildlife Operating Fund and Wildlife Endowment Fund as of November 30, 2010. Balance for the Wildlife Operating Fund was \$22,218,932.071. Balance for the Endowment Fund was \$78,776,309.68. **The Financial Status Report**, titled Exhibit B, is hereby incorporated into the official record of this meeting.

ENFORCEMENT

Special Recognition – Wildlife Enforcement Officer of the Year Award

Chairman Windham called upon Colonel Dale Caveny, *Enforcement Division Chief*. Col. Caveny recognized *Wildlife Enforcement Officer* William Gary Caulk, Jr. for receiving the Officer of the Year Award sponsored by the North Carolina Wildlife Federation, Southeastern Association of Fish and Wildlife Agencies, and Shikar Safari International. Col. Caveny also welcomed Officer Caulk’s father, Gary Caulk, who retired from the WRC as an Enforcement Officer in District 6. Caveny noted Officer Caulk’s leadership, positive attitude, and teamwork that made him an outstanding recipient of this year’s award.

Special Presentation – Old North State Award

Colonel Caveny introduced *North Carolina Senator* Edward Jones. Senator Jones presented *Wildlife Enforcement Officer* Jay Rivenbark with an award and flag in recognition of Rivenbark's dedication above the call of duty and on his own time, when Rivenbark assisted District 1 law enforcement using cell phone records to backtrack a killer. On behalf of Governor Bev Perdue, Senator Jones also presented Rivenbark with the Old North State Award for his actions in solving the murder.

Chairman Windham called a short recess at 9:15 so that photographs could be taken. The meeting reconvened at 9:20.

Chairman Windham introduced Major Jack Staley to the assembly. Staley recently was promoted to *Major in charge of Field Operations*.

ENGINEERING SERVICES

Boating Access Area Renovation, City of Washington

Erik Christofferson, *Engineering Services Division Chief*, presented a staff recommendation in **Exhibit C** to partner with the City of Washington to renovate a boating access area at the Havens Garden Park on Runyon Creek in Beaufort County. Budget for the renovations will come from the vessel registration funds. A motion to approve the proposal was made by Mitch St. Clair, Sr., seconded by Joe Barker, and carried. **Exhibit C** is hereby incorporated into the official record of this meeting.

Spotlight – LEED Gold Award

Chairman Windham called upon Michael Shelton, *Engineering Services Facilities Mechanical Engineer*, and apologized for overlooking him during the welcome earlier. Shelton presented an update on agency sustainability projects state-wide, such as solar powered lighting that has been installed at some Boating Access Areas. Shelton highlighted the agency headquarters building, a symbol of dedication to conservation, for its sustainable design. Shelton mentioned the focus on water efficiency, storm water management, air distribution and filtration systems, electricity controls, access to public transportation and emphasis on fuel efficiency, and recyclable furnishings as some of the benchmarks that garnered a LEED (Leaders in Energy and Environmental Design) Gold Award for the headquarters building. Shelton showed the LEED Gold Award, which will be displayed in the Commission Room. Commissioner Eugene Price suggested that the agency highlight the sustainability efforts through press releases and in the *Wildlife in North Carolina* magazine.

WILDLIFE MANAGEMENT

Wildlife Management Update

Chairman Windham called on Isaac Harrold, *Section Manager, State and Private Lands*. Harrold gave an update about the activities of the Division of Wildlife Management. He directed the Commissioners to CDs at their places, which include information about coyote hunting at night, feral swine, a deer and turkey density map, and Ducks Unlimited Progress Report. Harrold announced that the Wildlife Resources Commission will host the 20th Eastern Black Bear Conference in Hendersonville.

Land Acquisitions Update

Isaac Harrold presented a regular staff update on the status of land acquisition projects in **Exhibit D**. It is hereby incorporated into the official record of this meeting.

Property Acquisition Requests – Pender and Warren Counties

Isaac Harrold presented in **Exhibit E** staff recommendations to coordinate with the State Property Office to seek appropriate funding for Game Land and Wildlife Conservation Area acquisitions of the Sam Casey Tract in Pender County and the Tar River Company Tracts in Warren County. The motion to approve the recommendations was made by Eugene Price, seconded by Chuck Bennett, and carried. **Exhibit E** is hereby incorporated into the official record of this meeting.

Emergency Powers Rule Proposal – Public Comments

Isaac Harrold presented **Exhibit F**, a report to the Commission of comments received from public hearings and by email regarding a proposed rule to establish emergency powers in the event of a wildlife disease threat. Harrold reported that there were no attendees at the three public hearings. Twenty-five comments were received by email. Commissioner Joe Barker requested information about the person who made the comment in number 9. Commissioner Eugene Price stated that he thinks the authors of the comments should be noted from now on. **The Summary of Individual Comments Received on Proposed Emergency Powers Rule** is hereby incorporated into the official record of this meeting.

Emergency Powers Rule Adoption

On a motion by Eugene Price and second by Wes Seegars, the Commission adopted 15A NCAC 10A .1201 – Emergency Powers, presented by Isaac Harrold in **Exhibit G**. The adopted rule will be considered by the Rules Review Commission before codification in the North Carolina Administrative Code. **Exhibit G** is hereby incorporated into the official record of this meeting.

INLAND FISHERIES

Inland Fisheries Update

Bob Curry, *Inland Fisheries Division Chief*, presented an update on the activities of the Inland Fisheries Division. Curry mentioned trout stocking on the Catawba River below Lake James will be delayed until after dam repair is completed at the Bridgewater Tailrace. The Watha Fish Hatchery has provided 13 tons of striped bass for stocking on the Cape Fear River. Curry announced that the fly fishing show will be held in Raleigh, January 29-30, at the State Fairgrounds. Curry mentioned that nominations for the Thomas L. Quay Wildlife Diversity Award are open through January.

Proposal to Establish Size and Creel Limits by Reference for Saltwater Fishes

Bob Curry presented **Exhibit H**, a staff recommendation to present at local public hearings proposed changes in the 2011-2012 fishing rules that establish size and creel limits for saltwater species (sea trout, flounder, gray trout, and red drum) caught in inland fishing waters, by reference to Marine Fisheries Commission regulations. The rule would allow the WRC's rules for size and creel limits on those fishes to remain consistent with changes that are established by proclamation authority of the Marine Fisheries Commission. On behalf of the Warm Water Fisheries Committee, Ray White, Chairman, made the motion to take the proposed changes to public hearings. The motion was seconded by Maughan Hull and carried. **Exhibit H** is hereby incorporated into the official record of this meeting.

RULES

Rule Change Proposal – Wildlife Service Agents

Cecilia Edgar, *Deputy Director of Administration*, presented in **Exhibit I** a staff recommendation to present at public hearings a proposal to adopt changes to **15A NCAC 10G .0402**, **15A NCAC 10G .0403**, and **15A NCAC 10G .0405** that will implement equipment and support changes for Wildlife Service Agents. Adoption of the rule proposal will result in a savings to the agency of \$300,000.

Commissioner David Hoyle, Jr. recused himself from discussion and vote on Exhibit I.

Upon a motion by Durwood Laughinghouse and second by Joe Barker, with David Hoyle, Jr. recused, the Commission approved the recommendation to take the proposed changes to public hearings. **Exhibit I** is hereby incorporated into the official record of this meeting.

COMMITTEE REPORTS

Big Game Committee Report

Chairman David Hoyle, Jr. reported that the Big Game Committee met on January 12, 2011. Discussions included issues regarding hunting feral hogs and coyote hunting at night. Commissioner Chuck Bennett was presented an angler recognition award for the "trophy fish" that he foul-hooked.

Warm Water Fisheries Committee Report

Chairman Ray White reported that the Warm Water Fisheries Committee met on January 12. Discussion included the four-year moratorium on river herring which to date has not resulted in an increase of that species. Adult herring return to inland waters every four years to spawn. White indicated that this year will show whether the moratorium on take of river herring has helped the population. The committee heard about the cooperative effort to track Atlantic sturgeon in the Roanoke River that were fitted with radio transmitters last fall. White reported that the committee approved the Coastal Habitat Protection Plan (CHPP).

Joint Coastal Recreational Fishing License Committee Report

Ray White reported that he, Maughan Hull and Joe Barker, members of the agency CRFL Committee, met with their Division of Marine Fisheries counterparts in Washington on December 2, 2010 to review proposals to be funded through sales of Coastal Recreational Fishing Licenses. \$2,128,515 in CRFL funds was available for distribution. Thirteen project proposals will be funded this year, many of which will provide increased boating and fishing access areas.

Land Use and Access Committee Meeting Report

On behalf of Committee Chair Doug Parsons, Bob Curry reported that the Land Use and Access Committee received a report from Jeff Furness, Senior Scientist with PCS Phosphate in Beaufort County. PCS Phosphate wants to offer the WRC an opportunity to receive an 8000 acre conservation easement on reclaimed wetlands and farm land that can be integrated into the Game Lands Program. The Committee plans to bring a favorable motion for acceptance of the conservation easement to the entire Commission at the March 2011 meeting. The Committee discussed the East Fork Headwaters Tract. Eight hundred acres have been purchased. The WRC is assisting with the grant submission process for funding for more of the tract. The Committee received an update on the proposal for a day use facility on the Lutz Tract in Caldwell County. The Memorandum of Understanding for that lease agreement is under revision. The Council of State has not yet met to consider the lease agreement, which the WRC will sign after the MOU is finalized.

Habitat, Non-Game, and Endangered Species Committee Meeting Report

Committee Chairman Chuck Bennett reported that the committee met on January 12. Norman Young, *Agency Counsel*, talked about funding mechanisms for wildlife diversity contributions. Young stated that the existing Endowment Fund can be used for receipt of contributions for non-game species, separating non-game endowment from the remainder of the endowment fund. Chairman Bennett reported that the committee discussed the Cardinal Foundation's relationship with the WRC with respect to handling contributions. As a friend of the Wildlife Resources Commission rather than part of the Wildlife Resources Commission, the Cardinal Foundation is not set up to receive contributions on behalf of the agency. Bennett announced that the Scientific Councils have made their recommendations for naming species as endangered or of special concern. That full recommendation will come before the Commission at the May meeting.

RESOLUTION – SUPPORT FOR HUNTING WITH THE USE OF DOGS

Chairman Steve Windham read a Resolution out of the Big Game Committee that reaffirms the support of the Wildlife Resources Commission for the use of dogs in hunting. Eugene Price made a motion to adopt the resolution. The motion was seconded by Maughan Hull. Upon a show of hands and voice vote by Dell Murphy (by telephone), the resolution was adopted unanimously. **The Resolution to Reaffirm Support for Hunting with the Use of Dogs** is incorporated by reference into the official record of this meeting. The Resolution will be available on the Wildlife Resources Commission website.

COMMENTS BY THE CHAIRMAN

Chairman Steve Windham noted his appreciation for the presentation about WRC headquarters and agency sustainability efforts including the Green Growth Toolbox. He thanked Commissioner Price for suggesting publicizing the agency's efforts in sustainability. Windham requested that Commissioners reach out to the new legislators in their districts.

COMMENTS BY THE EXECUTIVE DIRECTOR

Gordon Myers, *Executive Director*, announced that the agency has several new technologies including wireless internet access in the Commission room. Myers stated that SharePoint will be rolled out soon for use among committees. He stated that the agency is close to launching the new website. Discussions for license restructuring are ongoing. The Commission will receive an update at the March meeting about the license restructuring discussions. Myers and Chairman Windham have met with the new legislative leaders in anticipation of the Session that starts January 26, 2011.

ADJOURNMENT

There being no further business, the meeting was adjourned by Chairman Windham at 10:30 a.m.

All exhibits are incorporated into the official record of this meeting by reference and are filed with the minutes.

Steve Windham, Chairman

Date

Gordon Myers, Executive Director

Date

NORTH CAROLINA WILDLIFE RESOURCES COMMISSION

YEAR-TO-DATE REVENUES AND EXPENSES

	<u>January 2010</u>	<u>January 2011</u>
Balance July 1	\$ 19,866,967.31	\$ 23,459,611.18
Plus: Receipts to Date	<u>41,643,639.13</u>	<u>41,673,108.66</u>
Balance and Receipts to Date	61,510,606.44	65,132,719.84
Less: Disbursements To Date	<u>39,621,158.38</u>	<u>44,617,633.89</u>
Balance January 31	<u>\$ 21,889,448.06</u>	<u>\$ 20,515,085.95</u>

EXHIBIT B
March 10, 2011

Summary and Analysis of Expenditure By Purpose - Code 24350, 24351, 24352 and 24353

	January 2010			January 2011		
	Authorized Budget 2009-10	Expenditures	% of Budget Expended	Authorized Budget 2010-11	Expenditures	% of Budget Expended
2100 Administration	\$ 10,615,245.00	\$ 5,265,522.98	49.60%	\$ 10,849,081.00	\$ 5,129,175.31	47.28%
2120 Enforcement	21,703,890.00	11,724,740.55	54.02%	22,462,242.00	13,758,004.67	61.25%
2130 Education	5,194,352.00	2,689,401.01	51.78%	5,131,774.00	2,715,230.42	52.91%
2140 Inland Fisheries	8,221,438.00	4,461,499.60	54.27%	8,703,809.00	5,102,907.06	58.63%
2150 Management	18,614,928.00	7,952,966.50	42.72%	18,258,309.00	8,270,215.48	45.30%
2160 Engineering Services	6,535,209.00	4,149,823.22	63.50%	8,880,054.00	6,479,457.37	72.97%
2170 W/Life Fund Receipts	4,779,638.00	3,377,204.52	70.66%	5,332,338.00	3,162,643.58	59.31%
TOTAL	\$ 75,664,700.00	\$ 39,621,158.38	52.36%	\$ 79,617,607.00	\$ 44,617,633.89	56.04%

NORTH CAROLINA WILDLIFE RESOURCES COMMISSION

ENDOWMENT FUND YEAR-TO-DATE

	<u>January 2010</u>	<u>January 2011</u>
Balance January 1	\$ 72,649,660.94	\$ 79,431,562.27
Plus: Revenues from Sales	127,914.10	191,284.40
Return on Investment	<u>379,215.23</u>	<u>374,761.42</u>
	73,156,790.27	79,997,608.09
Less: Transfers Out	<u>-</u>	<u>-</u>
Balance January 31	<u>\$ 73,156,790.27</u>	<u>\$ 79,997,608.09</u>
Market Value	\$ 76,200,749.88	\$ 84,101,134.56

Endowment Fund Interest

Sources of Interest Available	Expendable	Non Expendable	Budgeted Obligation	Transferred to Operations	Transferred to Capital Projects	Expendable Balance
ADULT Licenses	\$ 5,177,542.41		\$ 3,315,811.00	\$ -	\$ -	\$ 1,861,731.41
INFANT Licenses	-	\$ 7,476,526.25				\$ -
YOUTH Licenses	-	528,328.04				\$ -
Magazine Subscriptions	304,762.05	-	179,485.00	-		\$ 125,277.05
Contributions	313,479.42	-				\$ 313,479.42
TOTAL	\$ 5,795,783.88	\$ 8,004,854.29	\$ 3,495,296.00	\$ -	\$ -	\$ 2,300,487.88

2010-11 Budgeted Obligated

Allocation of Endowment Interest - Sportsman Fund	3,315,811.00
Allocation of Endowment Interest - Magazine Fund	179,485.00
	<u>\$ 3,495,296.00</u>

2010-11 Transferred To Date

To Sportsman Fund	-
To Magazine Fund	-
To Capital Projects	-
	<u>\$ -</u>

North Carolina Wildlife Resources Commission Land Acquisition Investigation Form

Date: 1-14-11

Tract Name: Voice of America Site A

Acreage: 2,822

County: Beaufort

Advertised Purchase Amount: \$0 (transfer from federal government)

Based on Appraisal: Yes No NA

Contact: Rick Williford (Site manager)

Phone: (252) 752-7181 ext. 105 (W)

Address: VOA Greenville Transmitting Station
3919 VOA Site B. Rd.
Grimesland, NC 27837

Status: High Interest Moderate Interest Low Interest No Interest

Grant Potential: NHTF CWMTF DU MARSH
 Other : transfer from federal government

Resources Assessment (Brief): The entire site is, and has been maintained in early succession grassland habitat for over 50 years. It is the only known site in the South Atlantic where the Henslow's Sparrow is known to breed reliably. This is a Species of Concern and is a priority in the NC Wildlife Action Plan. Other priority species in high numbers include northern bobwhite, loggerhead shrike, grasshopper sparrow, northern harrier, American kestrel, field sparrow, eastern meadowlark, eastern kingbird, star-nosed mole, long-tailed weasel, mole kingsnake, eastern kingsnake and eastern coachwhip.

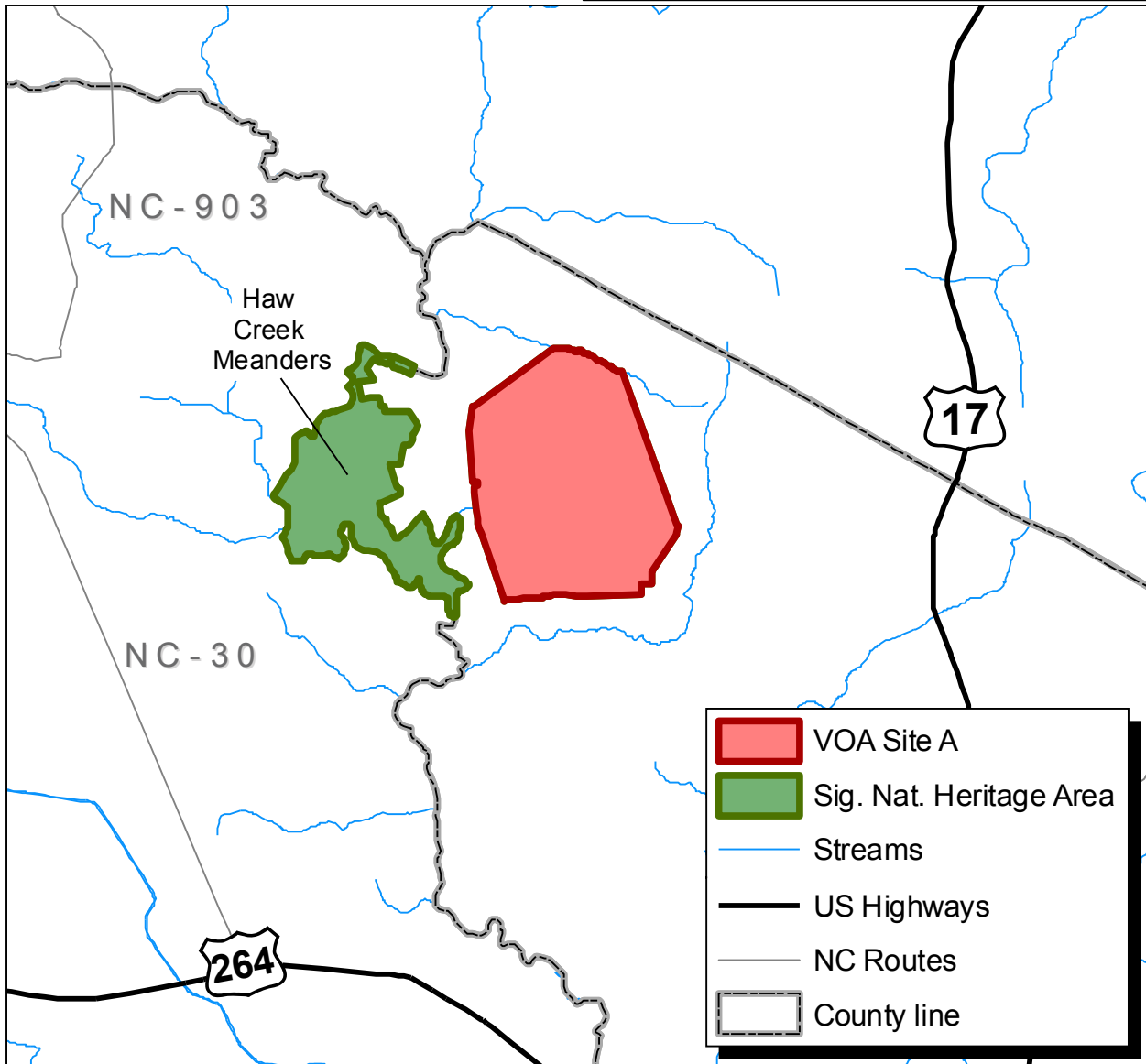
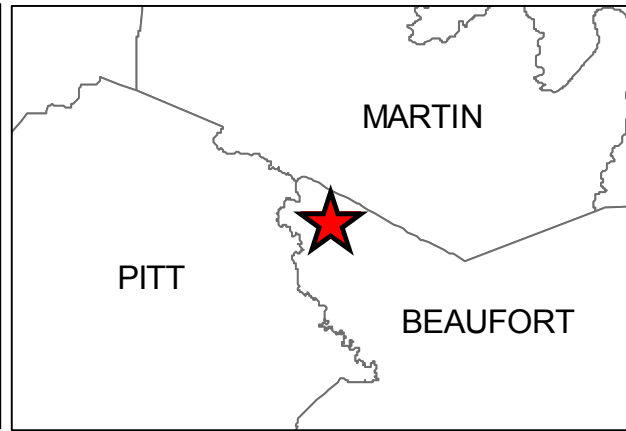
Access Assessment: Access is well developed with a network of roads present.

Game Lands Program Potential: Yes No

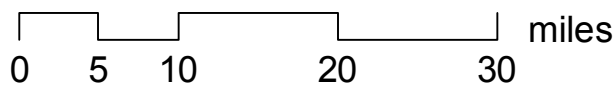
Recommendation: Pursue Acquisition Defer Do not Pursue Acquisition

Map Attached: Yes No

Voice of America
Site A
Beaufort County
2822 acres



January 2011



North Carolina Wildlife Resources Commission Land Acquisition Investigation Form

Date: 1/20/11

Tract Name: Piedmont Land Conservancy Properties (Ellis and Miles tracts)

Acreage: Ellis 77 acres; Miles 45 acres

Total Acreage: 122 acres

County: Ellis – Surry; Miles - Alleghany

Advertised Purchase Amount: Piedmont Land Conservancy (PLC) will sell the tracts to WRC for \$20,000 (seeking to recover taxes and closing costs only - property valued at approximately \$1,000,000).

Based on Appraisal: Yes No NA

Contact: Kevin Redding
Executive Director, Piedmont Land Conservancy
P.O. Box 4025
Greensboro, NC 27404-4025
Phone (336) 691-0088
kredding@piedmontland.org

Status: High Interest Moderate Interest Low Interest No Interest

Grant Potential: NHTF CWMTF DU MARSH
 Other: NCWRC

Resources Assessment (Brief): Both tracts are immediately adjacent to the current Mitchell River Game Land. The Ellis tract is adjacent to the Little Mtn. tract of Mitchell River Game Land (main tract, Surry Co.). The Miles tract is adjacent to the Saddle Mtn. tract of Mitchell River Game Land (Alleghany Co. portion). Both tracts are forested and have resources typical of those found along the Blue Ridge Escarpment.

Access Assessment: Public access to both tracts is available though Mitchell River Game Land.

Other: A survey/boundary painting contract will be necessary to establish boundaries of both tracts where they aren't adjacent to Mitchell River GL. This includes +/- 4,524 ft. of the Ellis tract and +/- 3,398 ft. of the Miles tract. Total footage is approximately 7,922 ft. Cost for this work shouldn't exceed \$10,000. The only additional expenses to WRC would be for appraisals (if necessary) and closing costs.

Game Land Program Potential: Yes No
Mitchell River Game Land

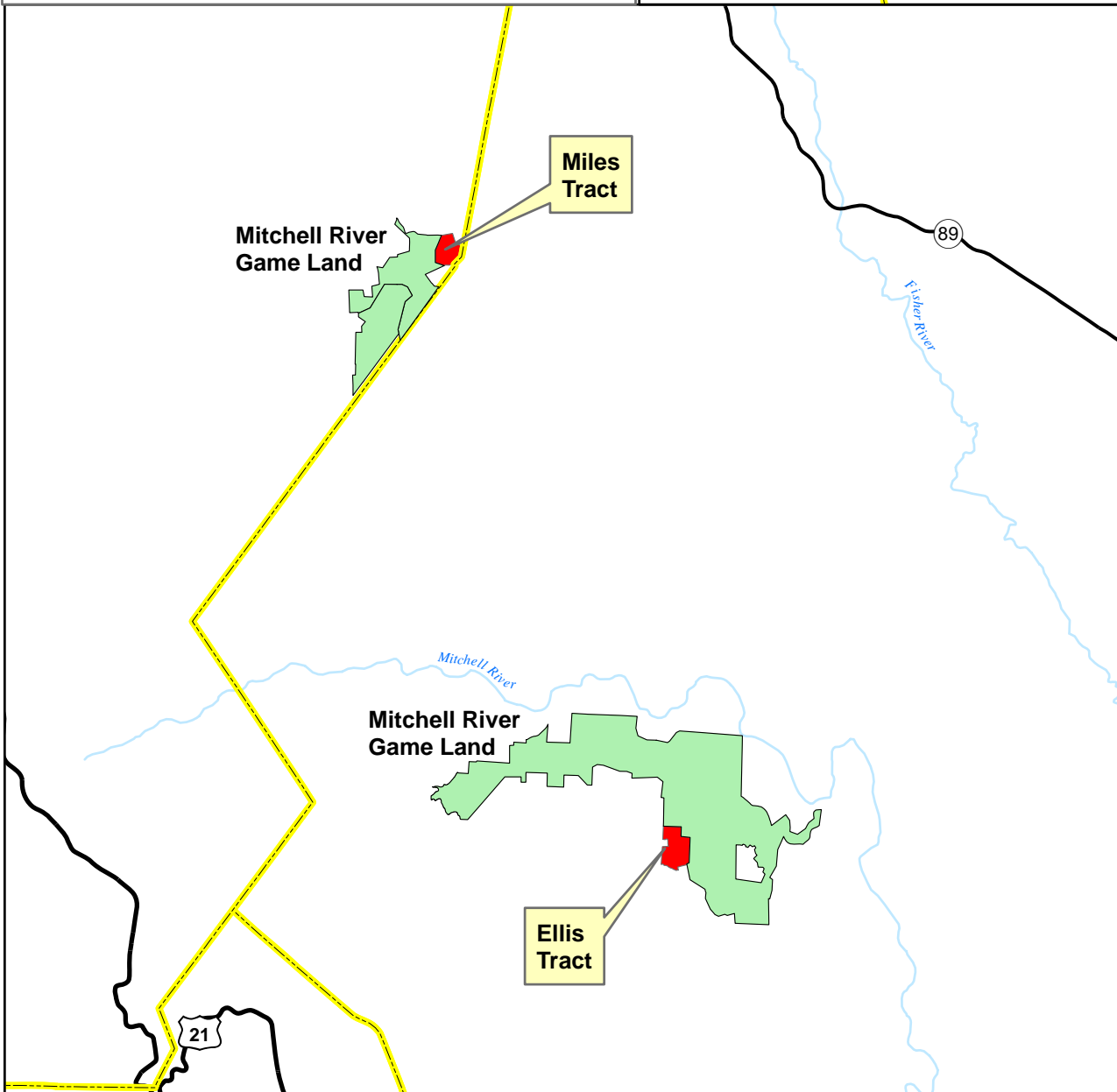
Recommendation: Pursue Acquisition Defer Do not Pursue Acquisition

Map Attached: Yes No- See Shapefile.

Piedmont Land Conservancy

**Miles Tract - 45 Acres
Alleghany County**

**Ellis Tract - 77 Acres
Surry County**



February 14, 2011

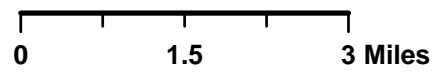


EXHIBIT D

March 10, 2011





North Carolina Wildlife Resources Commission

Gordon S. Myers, Executive Director

February 14, 2011

MEMORANDUM

TO: Dr. David Cobb, Ph.D., Chief
Division of Wildlife Management 

FROM: Isaac Harrold, Section Manager
State & Private Lands Programs 

SUBJECT: Currituck County Request to Purchase 56.35 Acres

In November 2010, two Currituck County tracts totaling 605 acres were reallocated from NC Department of Corrections to Wildlife Resources. One of these two tracts is adjacent to both the Currituck Correctional Center and the Currituck County Airport.

There has been a longstanding request from the County to purchase 25 acres of the adjacent state property to accommodate Division of Water Quality regulations regarding the prison spray field and compliance boundary. More recently, the County has requested to purchase an additional 31 acres to ensure FAA compliance regarding flight and turning zone regulations associated with the airport (see attached letter).

Staff has reviewed the County's request to purchase these ± 56 acres and has identified loss of public access as the primary concern. Although US 158 crosses the southern portion of the tract, there is little opportunity for parking and existing hydrology precludes development of parking areas along the highway. The best and most reasonable access exists along Maple Road on the east side of the tract. However, Maple Road also parallels the airport property and this road frontage is all associated with the County's proposed acquisition.

Staff recommends approval of this request, but offers the following conditions to mitigate our concerns:

- require the County to provide parking for game land users by constructing a small parking area (approx. 30 X 50 feet) off of Maple Road on the 56 acre tract,

- retain a 20 foot easement across the 56 acres to be acquired by the County to provide pedestrian access for game land users, and
- require the County to enroll the 56 acre tract into the Game Land Program.

The Currituck County Manager has indicated conceptual agreement with these conditions.

COUNTY OF CURRITUCK
Maple, NORTH CAROLINA



PATRICK IRWIN
Public Utilities Director

444 Maple Road
Currituck, NC 27956
Fax: (252) 453-3721
Phone: (252) 232-6061
E-mail: pat.irwin@currituckcountync.gov

Mr. Paul D. Wilson
North Carolina State Property Office
1321 Mail Service Center
Raleigh, NC 27699-1321

Re: 56.35 Acre Woodland Tract Maple North Carolina 27956

Mr. Wilson:

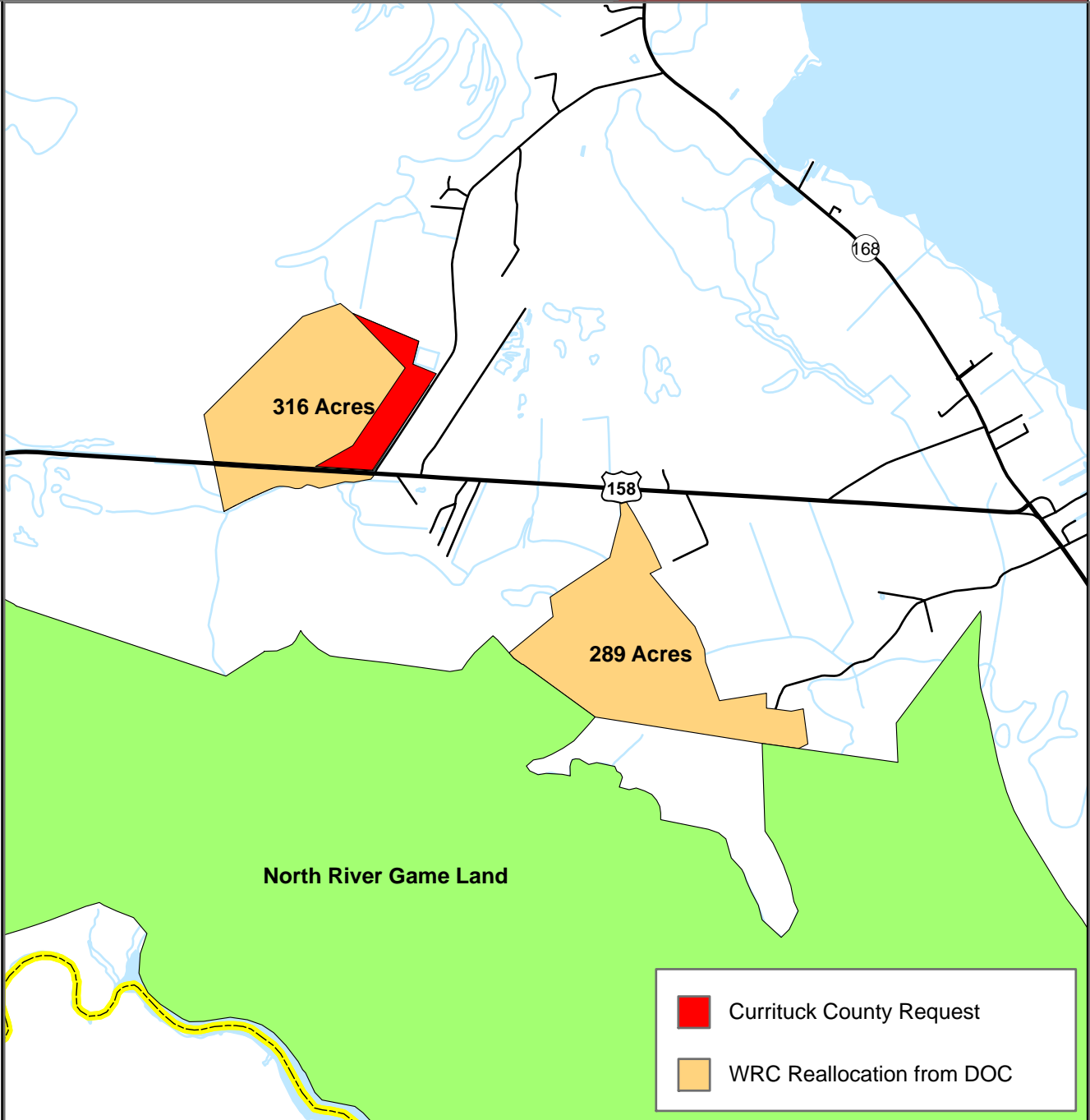
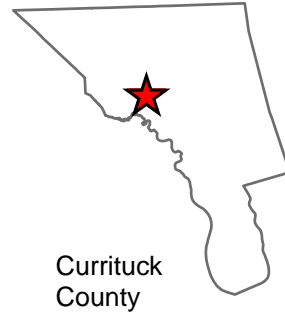
The County of Currituck is requesting that an additional 31.35 acres be added to the original request of 25 acres for a total of 56.35 acres for the land acquisition from the state tract located in Maple, NC parcel 0052-000-013C-0000.

The County is requesting these additional acres because the state tract is affected by the Currituck County Regional Airport flight zones, specifically the Inner Turning Zone, Sideline Zone and the Traffic Pattern Zone. The FAA requires the woodland in the Inner Turning Zone to be cut to maintain sight clearance for aircraft approach and take-off.

Sincerely,

Patrick Irwin
Public Utilities Director

Currituck County Acquisition Request 56.35 Acres Maple, NC



February 15, 2011

0 0.5 1 2 Miles



EXHIBIT E

March 10, 2011

LAND ACQUISITIONS/ EASEMENTS/ DISPOSITIONS
(Division of Wildlife Management 2/11/2011)

Color Key	
	Active & Funded
	Completed
	Inactive
	Active & Not Funded

Reference No. and Project Name	Acres	County	Game Land	Date Approved	Current Status	Funding
277 - Coastal Lumber tracts	8,000	Beaufort	Various	7/18/2001	State Property - Pending	CWMTF/NHTF
277 - Coastal Lumber tracts		Pitt		7/18/2001	State Property - Pending	CWMTF/NHTF
277 - Coastal Lumber tracts		Camden		7/18/2001	State Property - Pending	CWMTF/NHTF
278 - Posey Henderson tract	146	Polk	Green River	7/18/2001	Completed, 2003	CWMTF/NHTF-\$236,000
279 - Saltworks tract	444	Carteret	Carteret	7/18/2001	Completed, 2005	Gift from DU
280 - Johnston tract	1,074	Harnett	New	7/18/2001	Inactive	CWMTF/NHTF
281 - IP tract Moore	1,100	Moore	Sandhills	8/29/2001	Sold - Inactive	CWMTF/NHTF/Sec. 6
282 - Pipkin- Robbins tract	118	Dare	Roanoke Island Marsh	8/29/2001	Completed	CWMTF \$ 200,000
283 - Johnson tract	71.5	Caswell	Caswell	8/29/2001	Completed	CWMTF 57,000/Endowment
284 - Ocia Hill tract	12	Tyrrell	Futch	8/29/2001	Inactive	Wildlife Fund
285 - Deviney tract	231	Rutherford	South Mountains	10/5/2001	State Property - Pending	CWMTF/NHTF
286 - Wolf's Lair tract	1360	Henderson	Dupont	12/5/2001	Inactive	CWMTF/NHTF
287 - Caldwell tract	55	Haywood	Nantahala	12/5/2001	State Property - Pending	CWMTF/NHTF
288 - Adkins tract	5	Caswell	Caswell	12/5/2001	Not Available	Wildlife Fund
289 - Forbes tract	1391	Beaufort	Goose Creek	12/5/2001	Sold	CWMTF/NHTF
290 - Snodes Creek/Tetterton tract	289	Beaufort	Goose Creek	12/5/2001	Sold	CWMTF/NHTF
291 - Angola Bay tract	18,000	Pender	Angola Bay	12/5/2001	Completed 2006	NHTF \$10,249,418
292 - Whitehurst /Gaskins tract	230	Craven	Neuse River	12/5/01; 8/27/03	Completed	Wildlife\$750,00
293 - Beck	2500	Onslow	Stones	12/5/2001	Completed, 2004	CWMTF \$2,146,00/NHTF\$1,250,000/DOD 600,00
294 - Rose bay tract	1541	Hyde	Gull Rock	12/5/2001		CWMTF/NHTF
295 - Needmore tract	4600	Macon/Swain	Needmore	12/5/2001	Completed, 2004	CWMTF6.6 million/NHTF 1.5 million/EEP 7.5 million/
296 - Gersing tract	836	Avery	New	12/5/2001	Not Available	CWMTF/NHTF
297 - Harrell tract	46.94	Currituck	North River	1/9/2002	Completed, Dec - 2002	Wildlife Fund 63,000
298 - Ledbetter Estate tract	989	Richmond	Sandhills	1/9/2002	Inactive	NHTF, CWMTF, Sec. 6 funds
299 - Whitley tract	90	Martin	Roanoke River	3/6/2002	Inactive	Roanoke River escrow
300 - Pridgen tract	867	Pender	Holly Shelter	3/6/2002	Completed, 2004	CWMTF \$413,689, NHTF-\$251,000
301 - Pender 4 tract	1151	Pender	Holly Shelter	3/6/2002	Completed, 2004	CWMTF, NHTF-\$168,342
302 - Texas Plantation LLC tract	1600	Tyrrell	New	3/6/2002	Inactive	CWMTF, DU Marsh
303 - Mayo tract	121	Beaufort	Goose Creek	5/15/2002	Inactive	CWMTF
304 - Bollinger Gap tract	90	Burke	South Mountains	7/17/2002	Completed	NHTF - \$180,000
305 - Rhodes Pond tract	445	Cumberland	Rhodes Pond	7/17/2002	closed	DOT mitigation
306 - RPM tract	917	Carteret	Croatan	8/28/2002	Completed, 2004	NHTF - \$50,000, transfer from Coastal land trust
Pettiford Creek tract	114	Carteret	Croatan		Completed 2006	
307 - East Gum Swamp tract	261	Beaufort	Goose Creek	8/28/2002	Inactive problems w/ mineral	NHTF, \$313M CWMTF

LAND ACQUISITIONS/ EASEMENTS/ DISPOSITIONS
(Division of Wildlife Management 2/11/2011)

Color Key	
	Active & Funded
	Completed
	Inactive
	Active & Not Funded

Reference No. and Project Name	Acres	County	Game Land	Date Approved	Current Status	Funding
308 - Norman tract	71	Rutherford	South Mountains	8/28/2002	Completed, Dec - 2003	NHTF - \$140,000
309 - Stamper tract	20	Wilkes	Thurmond	8/28/2002	Sold	WEF
310 - Atkinson tracts	226	Pender	Holly Shelter	8/28/2002	Completed, May 2003	NHTF - \$242,000
311 - Rodman Road tract	1391	Beaufort	Van Swamp	10/4/2002	Sold	WEF-Wildlife Fund \$975M
312 - Holzbach tract	74.8	Richmond	Sandhills	12/4/2002	Inactive	CWMTF, NHTF
313 - Law tract	22.2	Richmond	Sandhills	12/4/2002	Inactive	CWMTF, NHTF
314 - Carter tract	30.8	Richmond	Sandhills	12/4/2002	Inactive	CWMTF, NHTF
315 - Kier tract	500	Camden	North River	12/4/2002	Inactive pending Coastal	CWMTF, NHTF
316 - GMS tract	8476.2	Tyrrell	Alligator River	1/8/2003	Closed June 2008	CWMTF(\$1,700,000 , (NHTF \$1,000,000)
317 - Tryon Peak-Jenkins tract	12.02	Polk	Green River	1/8/2003	Inactive no access	Donation
318 - Wakefield Associates tract	120	Burke	South Mountains	3/3/2003	lactive	NHTF, CWMTF, EEP and Wildlife Fund
319 - Lone Mountain tract	1,087	Rutherford	South Mountains	3/3/2003	Completed 2005	NHTF \$1,478,750, CWMTF\$561,000, EEP \$192,000
320 - Gillespie tract	10	Caswell	Caswell	3/3/2003	Completed	Wildlife Fund
321 - Chowan Swamp tracts	6,466	Gates/Hertford	Chowan Swamp	3/3/2003	Completed	\$CWMTF 3,000,000 EEP
A. Plum Creek			Chowan Swamp		Completed, 2004	
B. Coastal Lumber Harrold			Chowan Swamp		Completed, 2004	
C. Blue Sky Timber		Gates	Bertie		Completed, 2004	
322 - Johns River tracts	3,000	Caldwell/Burke	New	3/3/2003	Completed, 2007	NHTF, CWMTF, DU Marsh, EEP, NAWCA
Johns River Loop Road	1,001	Burke	New	3/3/2003	Completed 2006	CWMTF \$2,238,000 NHTF \$1,200,00
Johns River II South	519	Burke	New	3/3/2003	Completed, 2007	CWMTF
Johns River I North	2,247	Burke	new	3/3/2003	Completed, 2007	CWMTF
323 - Ingram tract	818	Transylvania	Toxaway	3/3/2003	Inactive	NHTF, CWMTF, EEP
324 - Wallace-Gray tract	820	Burke/McDowell	Pisgah	5/16/2003	Completed 2006	NHTF\$ 976,000
325 - Durant Island	2000	Dare	New	5/16/2003	Not available	CWMTF, NHTF
326 - Taylor tract	2918	Pender	Angola Bay	5/16/2003	Inactive	CWMTF, NHTF
327 - Kraus tract	1584	Jackson	New	5/16/2003	NA Acquired by TNC	CWMTF, NHTF
328 - Bolin Knob tract	468	Burke/McDowell	South Mountains	5/16/2003	Completed, 2004	CWMTF\$920,000 , NHTF- \$712,000
329 - Folkstone tract	400	Onslow	Stones Creek	5/16/2003	Completed, 2007	CWMTF grant \$1,092,000
330 - H & M tract	200	Onslow	Stones Creek	5/16/2003	Completed, 2005	CWMTF 637M, NHTF
331 - Lanier tract	300	Onslow	Stones Creek	5/16/2003	Completed, 2005	CWMTF \$1,140M, NHTF
332- Pugh tract	120	Hyde	Gull Rock	7/16/2003	Inactive pending DOT	NHTF, CWMTF, EEP
333- Barker I tract	33.5	Caswell	Caswell	7/16/2003	Completed, 2004	CWMTF 193,000
334- Barker II tract	83	Caswell	Caswell	7/16/2003	Completed, 2004	NHTF, CWMTF, EEP
335- Hodges tract	125	Caswell	Caswell	7/16/2003	Completed, 2003	NHTF, CWMTF, EEP
336- Brumley tract	300	Caswell	Caswell	7/16/2003	Completed, 2007	NHTF, CWMTF, EEP
337- CZR tract	100	Pender	Angola Bay	7/16/2003	State Property - Pending	donation from mitigation
338- Waccamaw IP tract	1945	Columbus	Columbus County	7/16/2003	State Property - Pending	NHTF, CWMTF, EEP
339- Pee Dee tract/Diggs	1600	Richmond	Pee Dee	8/27/2003	Closed 10/30/2009	NHTF, CWMTF, EEP
340- Collier tract	2	Currituck	Currituck Banks	8/27/2003	Completed	Donation/ Wildlife Fund
341- Lost Bridge tract	160	Macon	Needmore	8/27/2003	State Property - Pending	EEP

LAND ACQUISITIONS/ EASEMENTS/ DISPOSITIONS
(Division of Wildlife Management 2/11/2011)

Color Key	
	Active & Funded
	Completed
	Inactive
	Active & Not Funded

<u>Reference No. and Project Name</u>	<u>Acres</u>	<u>County</u>	<u>Game Land</u>	<u>Date Approved</u>	<u>Current Status</u>	<u>Funding</u>
342-Mingo tract		Caldwell/Wilkes	Buffalo Cove	8/27/2003	Completed, Dec - 2003	NHTF\$1,000,000, CWMTF \$13,500,000, EEP\$7,000,000
343-Drowning Creek tract	700	Richmond	Sandhills	10/3/2003	Completed, 2003	EEP
344-Linville River tract	1300	Burke	Pisgah	10/3/2003	Completed, 2005	NHTF-\$2,019,000, EEP \$1,150,000
345-McDonald tract	39	Scotland	Sandhills	12/3/2003	Inactive	Wildlife Fund
346-Odum/McPherson tract	260	Scotland	Sandhills	12/3/2003	Closed 9/23/08	USFWS section 6 grant 249,075 CWMTF 57,000
347-Carrington tract	565	Scotland	Sandhills	12/3/2003	completed 2005	NHTF\$707, 137 and USFWS \$1,487,500
348-Duncan tract	115	Caswell	Caswell	12/3/2003	Switched to Baldwin	Wildlife Fund, CWMTF, EEP
349-Etheridge tract	200	Currituck	North River	12/3/2003	Inactive	NHTF, CWMTF, EEP
350-IP-Register King tract	340	Columbus	Columbus County	12/3/2003	Inactive	NHTF, CWMTF, EEP
351-Landino Farms tract	800	Tyrrell		12/3/2003	Sold	DU MARSH, NAWCA, Justice EEP
352-IP-Juniper Creek	19,000	Brunswick Columbus		12/3/2003	closed December 2007	TNC/IP package
353-Winnie Moore Bay Flatwoods	53	Columbus	Columbus County	12/3/2003	Completed, 2006	Wildlife fund \$43,700
354-Bear Garden	14, 256	Pender	Holly Shelter	12/3/2003	Completed, 2004	CWMTF \$2,365,00
355- Ahearn tract	40	Carteret	Croatan	3/3/2004	Completed, 2006	USFWS\$ 270,000, NHTF \$128,842
356- Bernhardt tract	245	Caldwell	Buffalo Cove	3/3/2004	Inactive	NHTF/CWMTF/EEP
357- Corbett	970	New Hanover	Cape Fear	3/3/2004	Completed, 2007	Donation
358- Marion Carter estate	1878	Burke	S. Mountains	3/3/2004	Completed, 2007	NHTF\$ 2,035,000/CWMTF \$1,171,355
359- Swartout tracts	11.3	Scotland	Sandhills	3/3/2004	Inactive	NHTF/CWMTF/EEP
360- Lewis tract	66.7	Carteret	New	3/3/2004	Sold	USFWS Coastal Wetlands
361 - Little Mountain tract		Surry	Mitchell River	3/3/2004	Completed, 2004	Gift
362- Gupton tract	172	Franklin	Shocco	5/14/2004	Completed	EEP, NHTF, Wildlife Fund
363- Buffalo Cove Ferguson	16.42	Wilkes	Buffalo Cove	5/14/2004	Completed	NHTF/CWMTF/EEP
364- Buffalo Cove Erby	80	Caldwell	Buffalo Cove	5/14/2004	Inactive	NHTF/CWMTF/EEP
365- Cashie River tracts (Barber-Coppersmith)	125 1350	Bertie	Chowan Swamp	5/14/2004	Completed, 2006	CWMTF \$3,000,000
366- Mackovich (Boy Scout) tract	100	Caswell	Caswell	5/14/2004	Completed	NHTF/CWMTF/EEP fund 32 acres
367- Table Rock Mountain tract	545	Mitchell	New	5/14/2004	completed, 2004	Gift
368- Griffin tract	532	Hertford	New	5/14/2004	Inactive	NHTF/CWMTF/EEP/PR
369-Edenton Depot tract	5	Chowan	N/A	10/3/2003	completed, 2004	Wildlife Fund
370 - Hamby	10	Caldwell	Buffalo Cove	7/14/2004	Currently not available	Wildlife Fund
371-Carter Heirs	48	Wake	Butner/Falls	7/14/2004	Inactive	Timber sale receipts, Wildlife fund, WEF
372-Wells	146	Pender	Holly Shelter	7/14/2004	bought by Coastal Land trust	EEP transfer from CLT
373-Hope valley Forest	342	Chatham	Jordan	7/14/2004	closed December 2010	NHTF/CWMTF/EEP
374-Ellis	67	Surry	Mitchell River	7/14/2004	State Property - Pending	Gift from Piedmont Land Cons.
375-Mason Mountain Wetland	25	Macon	Needmore	7/14/2004	NA	CWMTF transfer from LTLT, Sec. 6 \$251,500
376-Chalk	674	Richmond	Pee Dee	7/14/2004		NHTF/CWMTF/EEP
377-McFayden	53	Bladen	Suggs Mill Pond	7/14/2004	Completed, 2005	CWMTF, Wildlife fund, WEF
378-Owen	293	Bladen	Suggs Mill Pond	7/14/2004	Completed 2006	CWMTF, Wildlife fund, WEF

LAND ACQUISITIONS/ EASEMENTS/ DISPOSITIONS
(Division of Wildlife Management 2/11/2011)

Color Key	
	Active & Funded
	Completed
	Inactive
	Active & Not Funded

<u>Reference No. and Project Name</u>	<u>Acres</u>	<u>County</u>	<u>Game Land</u>	<u>Date Approved</u>	<u>Current Status</u>	<u>Funding</u>
379-Brown	40.38	Carteret	New	7/14/2004	Sold	USFWS Coastal Wetland grant
380-University Garden	2700	Pamlico	New	7/14/2004	Inactive pending landowner	NHTF/CWMTF/EEP
381 - Light Ground Pocosin	1094	Pamlico	New	Legislature 7/04	Completed, July - 2004	Re allocation, wildlife fund
382 - Dickerson tract	5.9	Durham	Butner/Falls	8/25/2004	Completed January 2006	B/F TS Fund
383 - Leonard tract	40	Richmond	Sandhills	8/25/2004	Completed, 2005	Wildlife Fund, TS Fund, Sec. 6
384 - (FIA)Willamette tract	496	Moore	Sandhills	8/25/2004	Completed 2006	EEP \$290,098.50 and NHTF \$633,650
385 - Quaternary tract	1443	Onslow	Croatan	8/25/2004	closed April 2009	Wildlife Fund
386 - Wooten tract	22	Caldwell	Buffalo Cove	8/25/2004	closed December 2007	WEF
387 - Saddle Mountain tracts	462	Alleghany	Mitchell River	8/25/2004	Completed 2006	NHTF, CWMTF, EEP
388 - Howell Estate tract	610	Richmond	Pee Dee	10/6/2004	Completed, 2007	NHTF, CWMTF, EEP
389 - Bear Creek tracts	64	Burke	Pisgah	10/6/2004	Completed, 2006	NHTF, CWMTF, EEP
390-Kannapolis/Second Creek tract	2800	Rowan	New	10/6/2004	State Property - Pending	NHTF, CWMTF, EEP Canon Foundation \$100,000
391 - Price tract	40	Cumberland	New	10/6/2004	inactive	NHTF, CWMTF, EEP
392 - CCC Road (McNeilly) tract	57	Rutherford	S. Mountains	12/1/2004	State Property - Pending	wildlife fund
393 - Pension Fund tract	1,800	Montgomery	Uwharrie	12/1/2004	State Property - Pending	NHTF, CWMTF, EEP
394 - Upchurch/Williams tract	1,027	Hoke	Sandhills	12/1/2004	Complete 2006	NHTF\$1,217,000 CWMTF\$ 2,019,, EEP
395 - Thorofare Island tract	73	Pender	Cape Fear	12/1/2004	Closed 2007	NHTF, CWMTF, EEP
396 - Wells tract	146	Pender	Holly Shelter	12/1/2004	bought by Coastal Land trust	duplicate of 372
397 - Adirondack tract	2,736	Pender/Onslow	Holly Shelter	3/2/2005	NA	NHTF, CWMTF
398 - Corbett tract	3,677	Pender/Onslow	Holly Shelter	3/2/2005	inactive	NHTF, CWMTF
399 - Sherron tract	300	Hertford	Chowan Swamp	3/2/2005	Inactive	NHTF, CWMTF
400 - Colon Grandy tract	727	Currituck	North River	3/2/2005	Inactive	NHTF, CWMTF
401 Dysartville	3,300	McDowell	Hickorynut Mtn	3/2/2005	Inactive	NHTF, CWMTF, EEP
402 - Jack Story tract	75	Polk	Green River	3/2/2005	Complete 2005	Wildlife \$ 118,844
403 - Henson tract	3	Caldwell	Buffalo Cove	3/2/2005	State Property - Pending	Wildlife Fund
404 - Moeller tract	8	Caldwell	Buffalo Cove	3/2/2005	State Property - Pending	Wildlife Fund
405 - Linwood 2 tract	189	Davidson	Linwood	3/2/2005	inactive	NHTF, CWMTF, EEP, DU Marsh
406 - Milliken tract	2,800	Columbus	Columbus County	3/2/2005	Inactive	NHTF, CWMTF
407 - Roquist Pocosin tract	3,926	Bertie	Roanoke River	3/2/2005	State Property - Pending	transfer from EEP
408 - Dover Bay tract	3,100	Craven	Neuse River	3/2/2005	State Property - Pending	transfer from NCGTP
409 - Norwood tract	2,700	Johnston/Wake	New	3/2/2005	inactive	NHTF, CWMTF, EEP
410 - Baldwin tract	18	Caswell	Caswell	3/2/2005	Completed	Wildlife fund
411 - Cayton tract	1,000	Pamlico	New	3/2/2005	Inactive	NHTF, CWMTF, Wildlife fund
412 - Branch tracts	16.75	Robeson	Bullard& Branch	5/20/2005	Complete	Donation, misc from Wildlife fund
413 - Coweeta Creek tracts	48	Macon	Needmore	5/20/2005	Completed, August 2008	USFWS Recovery acq grant
414 - Jessup Millpond tract	1,173	Bladen	Suggs Mill Pond	5/20/2005	Closed	NHTF, CWMTF, EEP
415 - Boyd tract	1,312	Beaufort	New	5/20/2005	Inactive	NHTF, CWMTF, EEP
416 - J.D. Briley tract	547	Pitt	New	5/20/2005	Inactive, Sold	NHTF, CWMTF, EEP
417 - Marks Creek tract	1,460	Richmond	Pee Dee	7/13/2005	Inactive	NHTF, CWMTF, EEP

LAND ACQUISITIONS/ EASEMENTS/ DISPOSITIONS
(Division of Wildlife Management 2/11/2011)

Color Key	
	Active & Funded
	Completed
	Inactive
	Active & Not Funded

<u>Reference No. and Project Name</u>	<u>Acres</u>	<u>County</u>	<u>Game Land</u>	<u>Date Approved</u>	<u>Current Status</u>	<u>Funding</u>
418 - Mountain Creek tracts	373	Richmond	Pee Dee	7/13/2005	inactive-sold	NHTF, CWMTF, EEP
419 - Sutton tract	205	Bertie	Roanoke River	7/13/2005	State Property - Pending	CWMTF, Wildlife fund
420 - Woodville(weyerhauser	383	Bertie	Roanoke River	7/13/2005	Closed December 2008	NHTF, CWMTF, EEP
421 - Queen's Branch tract	89	Macon	Needmore	7/13/2005	Completed 2006	USFWS sec 6 251,500 CWMTF 727,000
422 - Eller tract	238	Caldwell	Buffalo Cove	8/26/2005	Inactive	NHTF, CWMTF, EEP
423 - Garrou tract	89	Caldwell	Buffalo Cove	8/26/2005	Inactive	NHTF, CWMTF, EEP
424 - Chelsie Grose tract	89	Caldwell/Wilkes	Buffalo Cove	8/26/2005	Inactive	NHTF, CWMTF, EEP
425 - Mildred Grose tract	50	Caldwell/Wilkes	Buffalo Cove	8/26/2005	Inactive	NHTF, CWMTF, EEP
426 - James Hill tract	46	Wilkes	Buffalo Cove	8/26/2005	Inactive	NHTF, CWMTF, EEP
427 - Robert Hill tract	71.25	Wilkes	Buffalo Cove	8/26/2005	Inactive	NHTF, CWMTF, EEP
428 - Nemeth tract	196	Wilkes	Buffalo Cove	8/26/2005	Inactive	NHTF, CWMTF, EEP
429 - Hawkins tract	203	Caldwell	Buffalo Cove	8/26/2005	Inactive	NHTF, CWMTF, EEP
430 - Wilson tract	23.9	Richmond	Sandhills	8/26/2005	Completed, 2007	Wildlife Fund, NC Hab. Foundation
431 - James tract	377	Richmond	Sandhills	8/26/2005	State Property - Pending	NHTF, CWMTF, EEP, Sec 6 funds
432 - Mizell tract	600	Washington	New	8/26/2005	Inactive	NHTF, CWMTF, EEP
433 - Northbend tracts	578	Burke	New	8/26/2005	Inactive	NHTF, CWMTF, EEP
434 - Tolson Island tract	14	Hyde	New	8/26/2005	Inactive	CWMTF, Coastal Wetlands grant
435 - Jenkins tract	654	Granville	New	8/26/2005	inactive	NHTF, CWMTF, EEP
436 - Pederson tract	100	Swain	Needmore	8/26/2005	State Property - Pending	NHTF, CWMTF, EEP
437 - Turkey Quarter Island tract	1,465	Craven		10/5/2005	Closed	donation
438 - Charles Cooper Tract	22	Onslow		10/5/2005	State Property - Pending	NHTF, CWMTF, EEP
439 - Raby Bend tract	57	Swain	Needmore	10/5/2005	State Property - Pending	trade with LTLT
440 - Margaret Boyd tract	14.8	Scotland	Sandhills	12/5/2005	Inactive	Wildlife Fund
441 - McDuffie tract	1505	Tyrrell	New	12/5/2005	Inactive	CWMTF, NHTF, DU, Coastal Wetlands, NAWCA
443 - Diaz Lot	1	Ashe	Three Top	3/1/2006	Closed	Wildlife Fund
444 - Paschal tract	344	Bladen	Suggs Mill Pond	3/1/2006	State Property - Pending	NHTF, CWMTF, EEP
445 - Kassab tract	55	Onslow	Stones Creek	3/1/2006	Closed March 2008	NHTF, CWMTF, DOD
446 - Sandy Mush tract	2600	Buncombe, Madison	Sandy Mush	3/1/2006	Completed	EEP
447 - Atkins	160.31	Bertie	Bertie	6/16/2006	State Property - Pending	Wildlife Fund
448 - Price	32	Ashe	Three Top	6/16/2006	State Property - Pending	Donation, misc from Wildlife fund
449 - Gilmore Teague	21.2	Buncombe	Sandy Mush	6/16/2006	State Property - Pending	CWMTF, EEP
450 - Craig Tweed	120	Buncombe	Sandy Mush	6/16/2006	State Property - Pending	CWMTF, EEP, NHTF
451 - Snelson	72	Madison	Sandy Mush	6/16/2006	NA	CWMTF, EEP, NHTF
452 - Graves	204.49	Caswell	Caswell	6/16/2006	Completed, 2006	CWMTF, EEP, PR
453 - River Bend	190	Caswell	Caswell	6/16/2006	State Property - Pending	Transfer from EEP
454 - McMillian	60	Caswell	Caswell	6/16/2006	Completed, 2007	PR funds and Wildlife Fund
455 - Huggins	790	Carteret	White Oak River	6/16/2006	Completed	Transfer from Coastal Federation
456 - Camp Knob	280	Cleveland	South Mtns.	6/16/2006	State Property - Pending	CWMTF, EEP, NHTF
457 - Mack Little	5	Columbus	Columbus County	6/16/2006	Completed, 2007	Donation
458 - WL Tate	90	Currituck	North River	6/16/2006	State Property - Pending	Donation, NHTF, CWMTF
459 - Rex Tillett	54.44	Dare	Roanoke Island	6/16/2006	State Property - Pending	Donation

LAND ACQUISITIONS/ EASEMENTS/ DISPOSITIONS
(Division of Wildlife Management 2/11/2011)

Color Key	
	Active & Funded
	Completed
	Inactive
	Active & Not Funded

<u>Reference No. and Project Name</u>	<u>Acres</u>	<u>County</u>	<u>Game Land</u>	<u>Date Approved</u>	<u>Current Status</u>	<u>Funding</u>
460 - Bishop Road	690	Hyde	New Lake	6/16/2006	State Property - Pending	Transfer from EEP
461 - Fillipo	569	Onslow	Stones Creek	6/16/2006	State Property - Pending	NHTF, CWMTF, DOD
462 - RMK - Camp Davis	1228	Onslow	Holly Shelter	6/16/2006	State Property - Pending	NHTF, CWMTF, DOD
463 - Zeist	660	Orange	New	6/16/2006	Inactive	CWMTF, EEP, NHTF
464 - Quattlebaum	104.9	Polk	Green River	6/16/2006	Closed February 2008	trade for Green River land
465 - William Tillman	27.79	Richmond	Sandhills	6/16/2006	Inactive	CWMTF, EEP, NHTF
466 - Mullberry Mill Bog	40	Wilkes	WCA	6/16/2006	Closed September 2008	NHTF, CWMTF, EEP, Land trusts
467 - Hodgson Family	15	Davie	Hunting Creek	8/30/3006	Inactive	Wildlife Fund
468- Fisher	36	Scotland	Sandhills	8/30/3006	Inactive	CWMTF, EEP, NHTF
469 - Stallings (Turnagin bay)	1300	Carteret	New	3/1/2006	Completed - 2007	CWMTF USFWS COASTAL- 900,000
470 Norco	85	Buncombe	Sandy Mush	10/6/2006	State Property - Pending	Donation, misc from Wildlife fund
471 Aiken	46	Burke	South Mountains	10/6/2006	State Property - Pending	Wildlife Fund
472 Daniel Smith	12	Burke	South Mountains	10/6/2006	State Property - Pending	Wildlife Fund
473 Chapman	5	Burke	South Mountains	10/6/2006	State Property - Pending	Wildlife Fund
474 Michaels	1	Burke	South Mountains	10/6/2006	State Property - Pending	Wildlife Fund
475 Vitas	30	Rutherford	South Mountains	10/6/2006	State Property - Pending	Wildlife Fund
476 ALCOA	2000	Davidson, Rowan	Alcoa	10/6/2006	State Property - Pending	NHTF, CWMTF, EEP
477 Jones	51	Caswell	Caswell	10/6/2006	State Property - Pending	CWMTF
478 Englehart Airport	1140	Hyde	Gull Rock	10/6/2006	Not Available	NAWCA Funding
4879 Sewell	21	Onslow	Stones Creek	10/6/2006	Not Available	Military COPS
480 Pheasant Creek	123	Cleveland	South Mountains	10/6/2006	Sold	CWMTF, NHTF, EEP
481 Gull Island	73	Dare		10/6/2006	Closed July 2008	CWMTF, NHTF
482 Henry Tract	454	Carteret		10/6/2006	NA	Coastal Wetland Grant
483 Upper Tar River IP tracts	10,588	Warren, Franklin	Shocco Creek	12/2007	Closed December 2007	NHTF, CWMTF Wildlife Bond
484 Johnson's Landing IP tract	1,763	Bertie	Roanoke River	12/2007	Closed June 2007	NHTF, CWMTF Wildlife Bond
485 Lower Roanoke IP tracts	8,432	Halifax, Northampton	Roanoke River	12/2007	Closed December 2007	NHTF, CWMTF Wildlife Bond
486 Chowan River IP tracts	8,682	Hertford	Chowan Swamp	9/2008	Closed August 2008	NHTF, CWMTF Wildlife Bond
487 - John Winslow tract	467	Martin	Batchelor bay	12/6/2006	Inactive	NHTF, CWMTF, EEP
488 - Troy Greene tract	90	Gates	Chowan Swamp	12/6/2006	State Property - Pending	NHTF, CWMTF, EEP
489 - Killingsworth Farm tract	139	Jones	Chowan Swamp	12/6/2006	bought by military	NHTF, CWMTF, EEP
490 - Odum Prison Land	1,063	Northampton	Roanoke River	2/14/2007	Closed May 2009	Property Transfer
491 - Rachel Morton	204	Onslow	White Oak River	5/18/2007	Closed	CWMTF, DU Marsh, NAWCA
492 - Riverstone	18,600	Columbus	Waccamaw	5/18/2007	State Property - Pending	NHTF, CWMTF
493- Whitehurst-Devil's Garden	430	Craven	Neuse River	5/18/2007	Closed 12/11/08	NHTF, CWMTF
494 - Fulp Tract	227	Richmond	Misc	5/18/2007	State Property - Pending	CWMTF
495 - Lennon's Mill Pond	1,200	Robeson	Misc	5/18/2007	State Property - Pending	NHTF, CWMTF, DU Marsh
496 - Miller-Hufnagel	100	Ashe	Three Top	7/11/2007	closed July 2010	CWMTF, NAWCA
497 - Old Fayetteville Road South	54	Bladen	Suggs Mill Pond	7/11/2007	State Property - Pending	CWMTF
498 - Barnes & Goode tract	350	Granville	Misc	7/11/2007	State Property - Pending	CWMTF, FWS Section 6, Military Support act
499 - McCotter	440	Onslow	Misc	7/11/2007	Closed September 2008	NHTF, CWMTF, Section 6

LAND ACQUISITIONS/ EASEMENTS/ DISPOSITIONS
(Division of Wildlife Management 2/11/2011)

Color Key	
	Active & Funded
	Completed
	Inactive
	Active & Not Funded

<u>Reference No. and Project Name</u>	<u>Acres</u>	<u>County</u>	<u>Game Land</u>	<u>Date Approved</u>	<u>Current Status</u>	<u>Funding</u>
500 - Weyerhaeuser - Onslow 22	1,200	Onslow	Misc	7/11/2007	Not Available	NHTF, CWMTF, Section 6
501 - Corbett Blossom	971	New Hanover	NE Cape Fear		acquired	Gift from TNC
502 - Leggett tract	75	Caswell	Caswell	8/29/2007	unavailable	CWMTF
503 - Dean Island	40	Macon	Needmore	8/29/2007	State Property - Pending	NHTF, CWMTF, FWS Sect 6
504 - Hamer tract	569	Richmond	Pee Dee	10/19/2007	State Property - Pending	NHTF, CWMTF, FWS Sect 6
505 - Snoddy tract	1	Henderson	Misc	10/19/2007	State Property - Pending	NHTF, CWMTF, FWS Sect 6
506 - Carpenter tracts	688	Scotland	Sandhills	12/5/2007	Closed August 2009	NHTF, CWMTF, FWS Sect 6, DOD
507 - Little Rose tract	500	Mitchell	Pisgah	12/5/2007	Closed July 2009	Donation/Transfer from CTNC/DCR
508 - Maple Prison Camp tract	289	Currituck	North River	12/5/2007	Closed December 2010	Re allocation from DOC
509- Thoroughfare Island tract	47	Currituck	North River	12/5/2007	State Property - Pending	Donation from TNC
510 - Pond Mountain	1850	Ashe		2/13/2008	Closed December 2010	NHTF, CWMTF
511- Whitehall Plantation	1430	Bladen		2/13/2008	Closed 2009	NHTF, CWMTF
512 - Wilkes Tract	115	Scotland	Sandhills	2/13/2008	Closed July 2009	NHTF
514 - New Hope Timber Tract	189	Caswell	Caswell	5/9/2008	State Property - Pending	NHTF, CWMTF
515 - President Tract	880	Hyde	Gull Rock	5/9/2008	Inactive	NHTF
516 - Leak-Wall Tract	1473	Richmond	Pee Dee	5/9/2008	State Property - Pending	NHTF, CWMTF
517 - Gullege-Sustainable Forestry	321	Richmond	Pee Dee	5/9/2008	State Property - Pending	NHTF, CWMTF
518 - Harmon Tract	238	Richmond, Scotland	Sandhills	7/9/2008	Closed December 2010	NHTF, CWMTF
519 - Johnson Tract	218	Ashe	New	7/9/2008	Closed July 2010	NHTF, CWMTF
520 - Elam Tract	72	Caldwell	New	7/9/2008	Closed December 2008	NHTF, CWMTF
521 - Lutz tract	650	Caldwell	New	10/19/2007	Closed May 2009	NHTF, CWMTF
522 - Myers Lot 676 Tract	0.5	Ashe	Three Top	8/27/2008	Closed october 2009	WRC
523 - Ducote Tract	7.5	Henderson	New	8/27/2008	Closed October 2010	NHTF, CWMTF
524 - Terry Tract	245	Rutherford	South Mountains	8/27/2008	closed May 2010	NHTF, CWMTF
525 - Carscadden Tract	4	Caswell	Caswell	10/3/2008	State Property - Pending	NHTF, CWMTF
526 - Wittig Tract	246	Edgecombe	Fishing Creek	10/3/2008	State Property - Pending	NHTF, CWMTF
527 - Island Creek Tract	1,846	Jones	Croatan	10/3/2008	Inactive	NHTF, CWMTF
528 - Blair Tract	2,100	Jones	Croatan	10/3/2008	Inactive	NHTF, CWMTF
529 - Rankin-Diggs Tract	785	Richmond	Pee Dee	10/3/2008	State Property - Pending	NHTF, CWMTF
530 - Hickorynut Mtn tract	8,000	McDowell	New	3/2/2005	State Property - Pending	NHTF, CWMTF, EEP
531 - Ingram Tract	1,200	Anson	Pee Dee	2/11/2009	State Property - Pending	NHTF, CWMTF
532 - Braun Tract	600	Ashe	Misc	2/11/2009	State Property - Pending	NHTF, CWMTF
533 - Sherill	205	Ashe	Three Top	2/11/2009	State Property - Pending	NHTF, CWMTF
534 - Bryant Lumber	567	Avery/McDowell	Pisgah	2/11/2009	State Property - Pending	NHTF, CWMTF
535 - Ryan Tract	709	Bladen	Misc	2/11/2009	State Property - Pending	NHTF, CWMTF
536 - Bear Pen Tract	1,340	Brunswick	Juniper Creek	2/11/2009	State Property - Pending	NHTF, CWMTF
537 - IP-Amici Group Tracts	8,300	Brunswick	Juniper Creek	2/11/2009	State Property - Pending	NHTF, CWMTF
538 - Jenrette Tract	1,827	Brunswick	Columbus County	2/11/2009	State Property - Pending	NHTF, CWMTF
539 - Lowland Tract 5098	208	Pamlico	Goose Creek	2/11/2009	State Property - Pending	NHTF, CWMTF
540 - Lowland Tracts 5100 and 5101	689	Pamlico	Goose Creek	2/11/2009	State Property - Pending	NHTF, CWMTF
541 - Atkinson Tract	1,616	Pender	Holly Shelter	2/11/2009	State Property - Pending	NHTF, CWMTF

LAND ACQUISITIONS/ EASEMENTS/ DISPOSITIONS
(Division of Wildlife Management 2/11/2011)

Color Key	
	Active & Funded
	Completed
	Inactive
	Active & Not Funded

<u>Reference No. and Project Name</u>	<u>Acres</u>	<u>County</u>	<u>Game Land</u>	<u>Date Approved</u>	<u>Current Status</u>	<u>Funding</u>
542 - Green Pig Tract	21	Polk	Green River	2/11/2009	State Property - Pending	NHTF, CWMTF
543 - King Mountain Tract	190	Randolph	Uwharrie	2/11/2009	Closed December 2010	NHTF, CWMTF
544 - Martin Marietta tract	525	Scotland	Sandhills	2/11/2009	State Property - Pending	NHTF, CWMTF
555 - Fitch Tract	207	Caswell	Caswell	3/4/2009	State Property - Pending	NHTF, CWMTF
556 - Hogan tract	203	Richmond	Sandhills	3/4/2009	State Property - Pending	NHTF, USFWS section 6
548 - Bigelow Tract	5	Caswell	Caswell	5/13/2009	closed 12/2009	NWTF, NCWHF
549 - Cooper Tract	22	Onslow	Stones Creek	5/13/2009	State Property - Pending	NHTF, CWMTF, NAVY
550 - Peterson Tract	1	Ashe	Three Top	7/8/2009	closed	Donation
551 - Havic & Noblitt Tracts	1,000	Camden	North River	7/8/2009	Inactive	Donation
552 - Glenn Futrell Tract	381	Dare	New	8/26/2009	closed December 2009	Donation
553 - Bob's Pocket Wilderness	2,426	McDowell/Rutherford	New	10/7/2009	State Property - Pending	Donation
554 - Crosshairs Investment tract	1,197	Bladen	New	12/2/2009	State Property - Pending	NHTF, CWMTF, NAWCA, EEG, EEP
555 - Fontaine & Goad tracts	230	Granville	Butner/Falls	2/10/2010	State Property - Pending	NHTF, CWMTF
556 - Selma Ray tract	17	Wilkes	Thurmond Chatham	2/10/2010	State Property - Pending	PR funds
557 - City of Hamlet tract	19	Richmond	Sandhills	2/10/2010	closed 10/2010	Mitigation funds
558 - DOA Dredge Islands	135	Brunswick	New	2/10/2010	State Property - Pending	NA reallocation
559 - Smith Creek Tract	923	Granville	Butner/Falls	3/3/2010	State Property - Pending	NHTF, CWMTF Bargain sale, Private funding
560 - Brown's Island	165	Carteret	New	3/3/2010	State Property - Pending	USFWS Coastal Wetlands, NAWCA Grant
561 - Ludford Tract	160	Tyrrell	Aligator River	5/12/2010	State Property - Pending	NHTF, CWMTF
562 - Barge Landing Tract	3	Pamlico	Goose Creek	7/7/2010	State Property - Pending	Reallocation
563 - Godwin Tract	62	Pender	Holly Shelter	7/7/2010	State Property - Pending	NHTF
564 - Maple Prison (northern tract)	325	Currituck	North River	7/7/2010	Closed January 2010	Reallocation
565 - Silbert tract	133	Polk	Green River	8/25/2010	State Property - Pending	NHTF, CWMTF
566 - Joe Carpenter Tract	16	Scotland	Sandhills	8/25/2010	State Property - Pending	NHTF, CWMTF, ACUB, USFWS
567 - Richlands Mountain Tract	29	Rutherford	South Mountains	8/25/2010	State Property - Pending	NHTF, CWMTF
568 - Mosteller Tract	1	Ashe	Three Top	8/25/2010	State Property - Pending	Donation
569 - Sam Casey Tract	6	Pender	Cape Fear	1/13/2011	State Property - Pending	Donation
570 - Tar River Timber Co tracts	212	Warren	Shocco Creek	1/13/2011	State Property - Pending	CWMTF, USFWS section 6

EXHIBIT F

March 10, 2011



COUNTY OF DARE

Project Management

P.O. Box 1000, Manteo, North Carolina 27954

Lee Wrenn
Special Projects Manager

252-475-5897
leew@darenc.com

February 22, 2011

Mr. John Barbour
State Property Office
1321 Mail Service Center
Raleigh, NC 27699-1321

Dear Mr. Barbour,

Thank you for working with us on easements on State owned tracts for the Roanoke Island Water Project. The project extends potable water service to those parts of Roanoke Island that are not currently served by Dare County or the Town of Manteo. The construction includes improvements at the water plant, ground storage facility, elevated storage and approximately forty miles of pipeline.

One of the critical easements for the project is on the Wildlife Boat Landing tract on California Lane. The tract is identified as tax PIN # 978906480032. The need here is for a permanent easement. It is located entirely within the existing easement to the County for the construction of California Lane (copy previously provided). What we are seeking here is the ability to install a water main along California Lane. The water line would cross the driveway that leads to the boat landing. We understand the need to maintain access to the facility during construction and have previously provided sheet G1 general conditions from our construction drawings which will be the guidelines for maintaining access during construction and the standards for repairing the gravel driveway.

We would like to begin construction as soon as possible by use of a right of entry for construction. We will agree to standard conditions necessary to proceed prior to adoption of the easement by Council of State.

Please let me know if you need additional information.

Sincerely,

A handwritten signature in cursive script that reads "Lee Wrenn".

Lee Wrenn

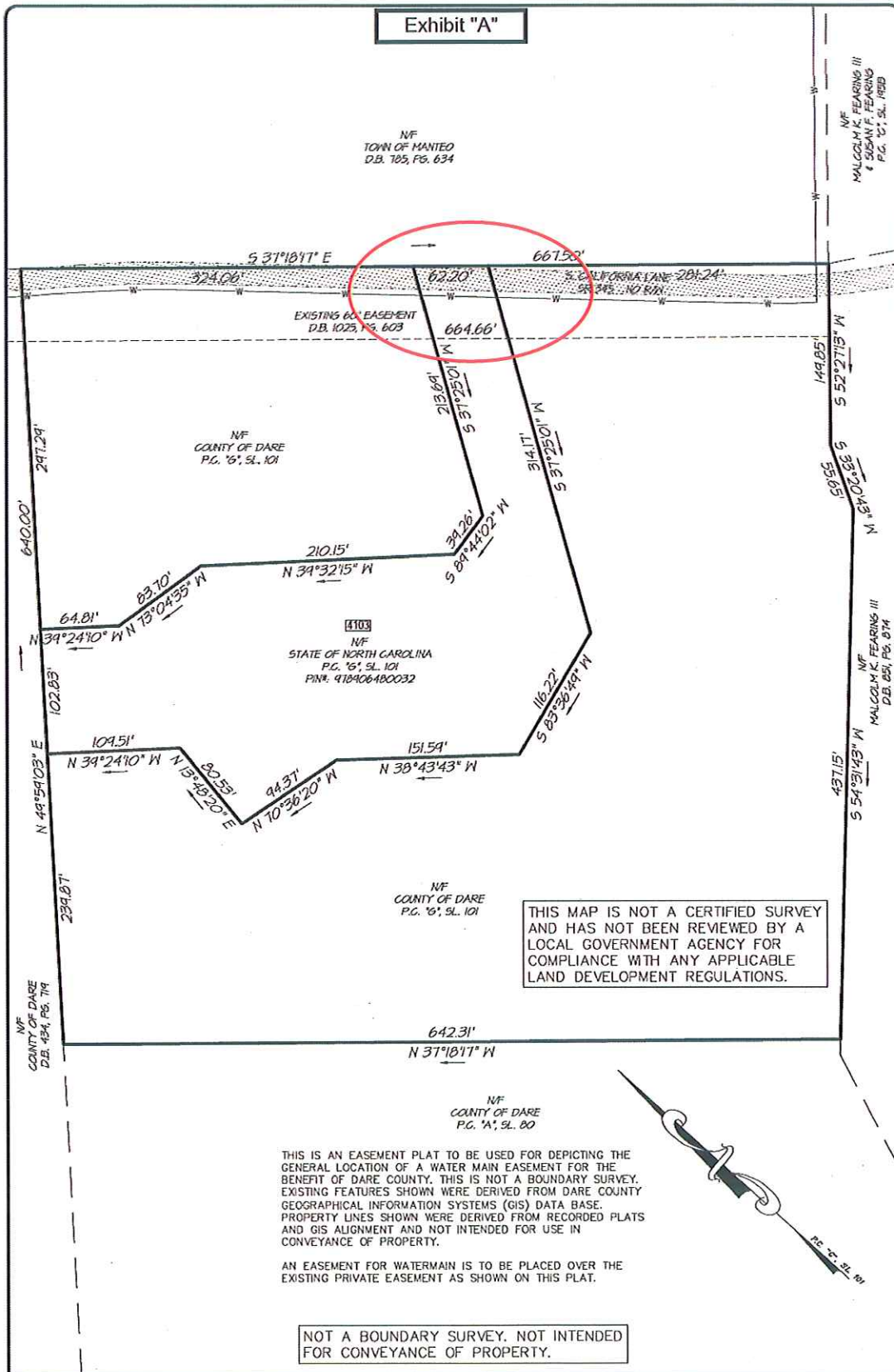


Rec	PI#	PARCEL	ADDRESS	OWNER1	OWNER2	SUBDIVISIO
1	978900480032	026640002	0 S CALIFORNIA LN	NORTH CAROLINA STATE		SUBDIVISION - NONE

Done

FoxyProxy: Default

Exhibit "A"



THIS MAP IS NOT A CERTIFIED SURVEY AND HAS NOT BEEN REVIEWED BY A LOCAL GOVERNMENT AGENCY FOR COMPLIANCE WITH ANY APPLICABLE LAND DEVELOPMENT REGULATIONS.

THIS IS AN EASEMENT PLAT TO BE USED FOR DEPICTING THE GENERAL LOCATION OF A WATER MAIN EASEMENT FOR THE BENEFIT OF DARE COUNTY. THIS IS NOT A BOUNDARY SURVEY. EXISTING FEATURES SHOWN WERE DERIVED FROM DARE COUNTY GEOGRAPHICAL INFORMATION SYSTEMS (GIS) DATA BASE. PROPERTY LINES SHOWN WERE DERIVED FROM RECORDED PLATS AND GIS ALIGNMENT AND NOT INTENDED FOR USE IN CONVEYANCE OF PROPERTY.

AN EASEMENT FOR WATERMAIN IS TO BE PLACED OVER THE EXISTING PRIVATE EASEMENT AS SHOWN ON THIS PLAT.

NOT A BOUNDARY SURVEY. NOT INTENDED FOR CONVEYANCE OF PROPERTY.

PROJECT
P08078

DRAWN
JMH

CAD REF.
P08078-0000

DATE
5/18/10

COPYRIGHT © 2010
QUIBLE & ASSOCIATES, P.C.

THIS DOCUMENT IS THE PROPERTY OF
QUIBLE & ASSOCIATES, P.C. ALL
RIGHTS ARE RESERVED. ANY RE-
PRODUCTION OF THIS OR POSSESSION
WITHOUT PRIOR PERMISSION OF
QUIBLE & ASSOCIATES, P.C. WILL
CONSTITUTE VIOLATION OF COPYRIGHT
LAWS. VIOLATION WILL BE SUBJECT
TO LEGAL ACTION

20100805

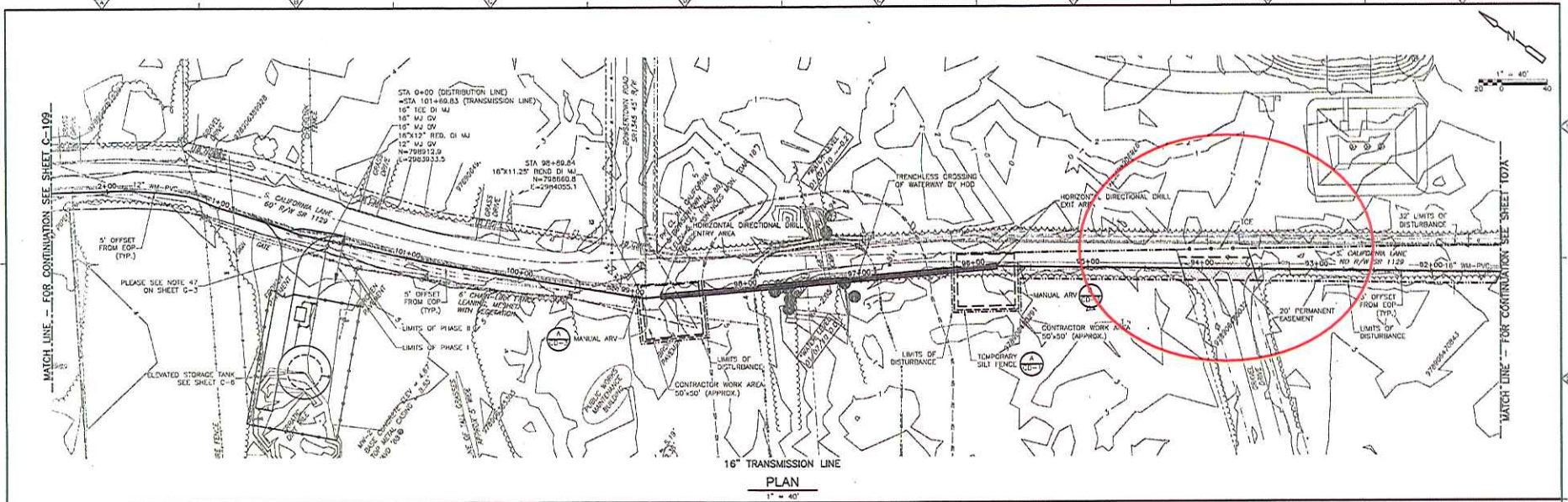
WATERMAIN EASEMENT PLAT FOR:

PIN#: 978906480032

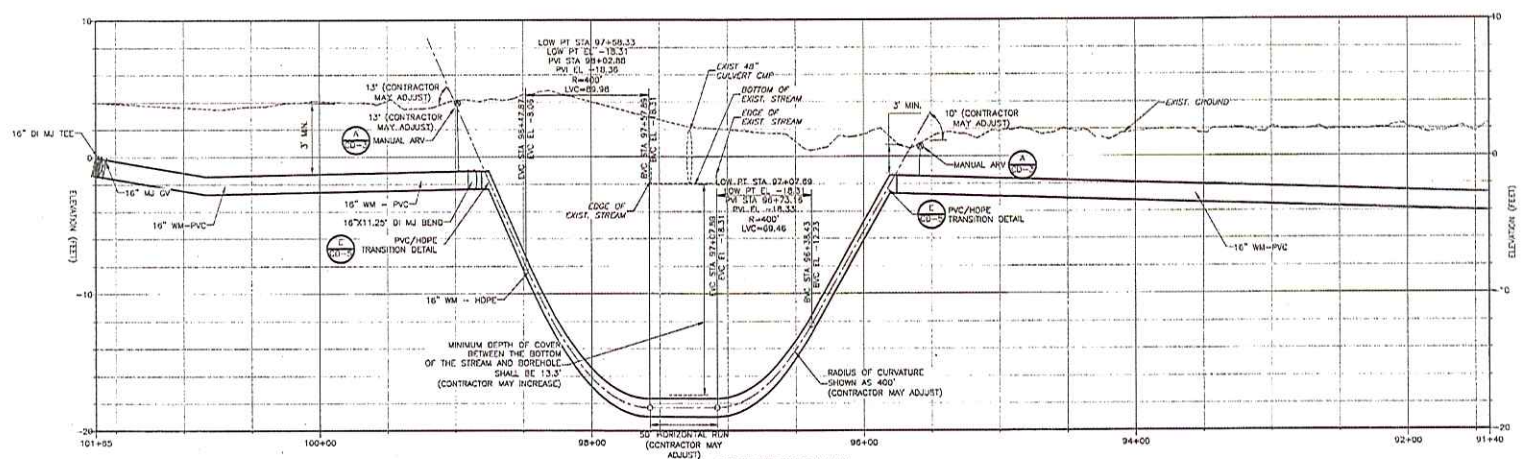
NAGS HEAD TOWNSHIP DARE COUNTY
NORTH CAROLINA

0 100' 200'
GRAPHIC SCALE IN FEET 1" = 100'

Map #: 203
SINCE 1959
Quible & Associates, P.C.
ENGINEERING * CONSULTING * PLANNING
ENVIRONMENTAL SCIENCES * SURVEYING
NC License#: C-0208
PO Drawer 870, Kitty Hawk, NC 27949
Phone: (252) 261-3300
Fax: (252) 261-1260
E-Mail: administrator@quible.com



16" TRANSMISSION LINE
PLAN
1" = 40'



16" TRANSMISSION LINE
PROFILE
SCALE:
HORIZ. 1" = 40'
VERT. 1" = 4'

XREF: C:\WORK\2014\CDM\PROJECTS\BASE, CE, BUREAU, RIN, C, P, P, L, B, A, G, E\ Inspec: []
 Filename: C:\Users\m00505101\Documents\101085111.dwg User: m00505101 Date: 5/27/2010 5:44:33 PM

REV.	DATE	BY	CHKD.	REMARKS

DESIGNED BY: D. NICHOLS
 DRAWN BY: D. MIDDLE
 CHECKED BY: J. MOFFMAN
 CROSS CHECKED BY: J. LAMARCA
 APPROVED BY: M. S. COOK
 DATE: JUNE 2010

CDM
 2000 Thomas & McKee
 5400 Renaissance Avenue, Suite 300
 Raleigh, NC 27612
 Tel: 919 487-0020
 North Carolina State License Number: P0412

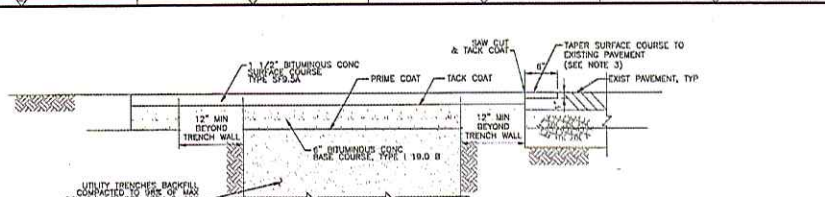
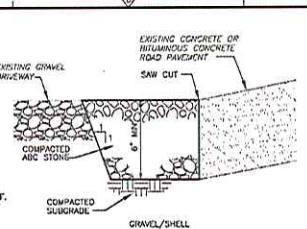
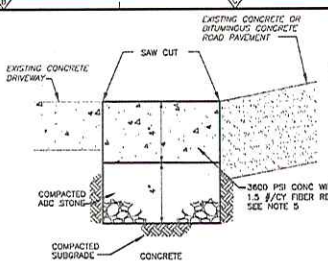
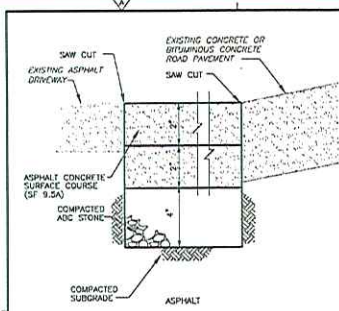
DARE COUNTY, NORTH CAROLINA
**ROANOKE ISLAND WATER SYSTEM
 EXPANSION PROJECT**

PIPE PLAN AND PROFILE
 SHEET NO.
C-108



PROJECT NO. 17392-71419
 FILE NAME: C108S1PL
 SHEET NO.
C-108

ISSUED FOR BID

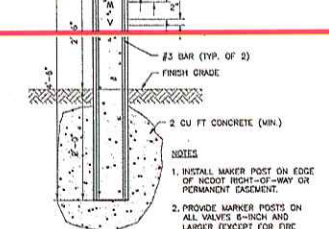
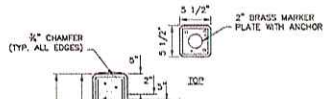


- NOTES:**
1. FOR REPLACEMENTS, REMOVE AND DISPOSE OF EXISTING PAVEMENT, CRUSHED STONE BASE, AND EARTH SUBGRADE TO FINAL GRADE ELEVATION MINUS THE REQUIRED DEPTH OF CRUSHED STONE AND PAVEMENT. NO CREDIT SHALL BE GIVEN FOR EXISTING CRUSHED STONE ABOVE THIS TOTAL REMOVAL DEPTH. THEN PLACE, COMPACT, AND FINISH THE SPECIFIED CRUSHED STONE AND BITUMINOUS PAVEMENT.
 2. ALL PAVEMENT SUBGRADES SHALL BE COMPACTED TO AT LEAST 98% OF MAXIMUM DRY DENSITY PRIOR TO CRUSHED STONE PLACEMENT. ALL CRUSHED STONE SHALL BE ABC COMPACTED TO 98% OF MAXIMUM DRY DENSITY. THE SPECIFIED DEPTHS SHALL BE COMPACTED DEPTHS. ALL SOFT OR WET SUBGRADE SHALL BE REMOVED AND BACKFILLED WITH DRY COMMON FILL OR ABC STONE AND RECOMPACTED.
 3. ALL EDGES OF EXISTING PAVEMENT TO REMAIN SHALL BE SAW CUT IN A STRAIGHT LINE PERPENDICULAR TO THE PAVEMENT EDGES.
 4. CONCRETE TO HAVE LIGHT BROOM FINISH. PROVIDE FULL-DEPTH JOINTS AT 20-FT MAX EACH WAY WITH BITUMINOUS SEAL ROUND ALL EDGES AND AT JOINTS.
 5. DRIVEWAY REPLACEMENT WIDTH SHALL BE 12-INCHES MINIMUM BEYOND THE OUTSIDE OF THE TRENCH WALL ON EITHER SIDE OF THE TRENCH.
 6. WHERE MATERIALS OTHER THAN SHOWN ABOVE EXIST THE DRIVEWAY SHALL BE REPLACED TO MATCH EXISTING. REMOVE, STORE, AND REPLACE BRICK PAVEMENT BLOCKS, TURF STONE OR OTHER MATERIALS AS NECESSARY.
 7. FOR SOIL/DIRT DRIVEWAYS REPLACE TRENCH EXCAVATION WITH NATIVE SOILS AND COMPACT TO 98% MAX DRY DENSITY. MOUND BACKFILL TO ENSURE DRAINAGE AND PREVENT FLOODING.

- GENERAL NOTES (FOR ALL PAVEMENT DETAILS):**
1. PAVEMENT AND INSTALLATION SHALL COMPLY WITH NCDOT 610 AS SPECIFIED IN NCDOT STANDARD SPECIFICATIONS FOR ROADS AND STRUCTURES LATEST EDITION.
 2. THIS DETAIL APPLIES TO ALL NEW AND REPLACEMENT PAVEMENT AND PATCHES OF TRENCHES IN PAVED AREAS. THIS DETAIL IS FOR REFERENCE FOR REPAIRS SPECIFIED IN SECTION 02570.
 3. AT JUNCTION OF PAVEMENT SURFACE COURSE WITH EXISTING PAVEMENTS, SAW CUT 1" DEEP x 6" WIDE GROOVE IN EXISTING PAVEMENT TO TAPER SURFACE COURSE TO EXISTING SURFACE IN THIS GROOVE.
 4. PAVEMENT REPLACEMENT SHALL BE 12-INCHES OUTSIDE THE TRENCHLINE FOR ALL ROAD CROSSINGS UNLESS THE CROSSING OCCURS WITHIN A RADIUS OF CURVATURE AT AN INTERSECTION WITH ANOTHER ROADWAY. WHEN THIS OCCURS THE APRON WITHIN THE RADIUS OF CURVATURE BETWEEN THE TRENCHLINE AND INTERSECTING ROADWAY SHALL ALSO BE MILLED AND REPAVED WITH 1-1/2" SF 9.5A RESULTING IN A SMOOTH INTERSECTION TRANSITION. DEVIATIONS FROM THE ROADWAY CROSSING LOCATIONS SHOWN ON THE DRAWINGS WHICH REQUIRE ADDITIONAL PAVING SHALL BE APPROVED BY THE ENGINEER PRIOR TO ANY CUTTINGS OF EXISTING ASPHALT PAVEMENT.
 5. WHERE PIPE IS INSTALLED WITHIN THE LIMITS OF PAVEMENT PARALLEL TO THE ROAD CENTERLINE THE PIPE TRENCH SHALL BE REPAVED PER THIS DETAIL. THE ALIGNMENT OF THE PIPE WITHIN THE REPAVED TRENCH LIMITS WITH 1-1/2" OF SURFACE COURSE SF9.5A FOR THE ENTIRE LENGTH OF ROADWAY DISTURBED.
 6. SEE DETAIL E, SHEET CD-6 FOR TYPICAL PAVEMENT REPAIR LIMIT.

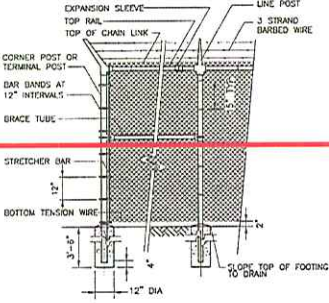
DRIVEWAY / PARKING LOT REPLACEMENT
DETAIL A

NCDOT STATE ROADWAY BITUMINOUS PAVEMENT
DETAIL B

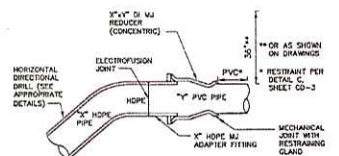


- NOTES:**
1. INSTALL MARKER POST ON EDGE OF ROAD RIGHT-OF-WAY OR PERMANENT EASEMENT.
 2. PROVIDE MARKER POSTS ON ALL VALVES 6-INCH AND LARGER (EXCEPT FOR FIRE HYDRANT GUARD VALVES).
 3. STAMP ABBREVIATION INTO CONCRETE - "N" FOR MAINLINE VALVE.
 4. 2-INCH BRASS MARKER PLATE SHALL HAVE DIRECTIONAL ARROW POINTING TO THE VALVE WITH THE DISTANCE TO THE NEAREST FOOT.

VALVE MARKER
DETAIL G

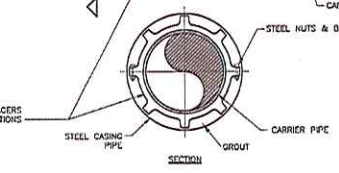
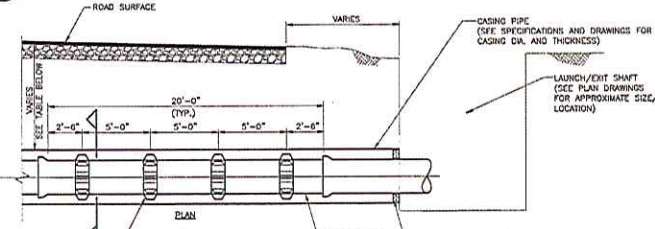


CHAIN LINK FENCE
DETAIL D



- NOTES:**
1. HDPE AND PVC SIZE SHALL BE AS NOTED ON THE DRAWINGS AT EACH TRANSITION. PIPE CLASS AND THICKNESS AS SPECIFIED.
 2. SEE SPECIFICATIONS FOR DI FITTING CLASS AND BOLTING REQUIREMENTS.
 3. TRANSITION TO PVC SHALL OCCUR AFTER HDD ALIGNMENT HAS REACHED NEAR HORIZONTAL SLOPE.

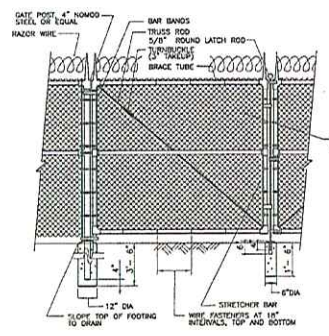
PVC/HDPE TRANSITION
DETAIL E



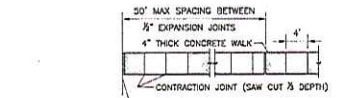
CASING O.D. (INCHES)	MINIMUM DEPTH OF COVER (FT)
12" to 24"	4 FT
24" to 36"	6 FT
36" to 48"	8 FT

- NOTES:**
1. TOP OF CASING SHALL BE 24" MIN. BELOW BOTTOM OF DITCH.
 2. ENCASEMENTS SHALL EXTEND AT LEAST FROM BENCH LINE TO BENCH LINE IN CUT SECTIONS, 5' BEYOND THE 5% SLOPES IN FILL SECTIONS, AND 10' BEYOND EDGE OF PAVEMENT IN SECTIONS WITH NO DITCH OR FILL AREA.
 3. CONTRACTOR SHALL USE DEWIS TO FIELD CORRECT CARRIER PIPE FROM SHAPES ALIGNMENT SHOWN ON PLAN.
 4. CASING PIPE SHALL BE SLOPED TO DRAIN TOWARDS THE LAUNCH SHAFT AT EACH CROSSING LOCATION.
 5. CONTRACTOR MAY USE TYPE C END SEALS WITH STAINLESS STEEL BRAYS AS MANUFACTURED BY PIPELINE SEAL AND INSULATOR, INC IN PLACE OF BRICK AND MORTAR SEAL. ANNUAL SPACE GROWING SHALL BE COMPLETED AS SPECIFIED PRIOR TO END SEAL INSTALLATION.

SINGLE CARRIER PIPE IN CASING
DETAIL F



CHAIN LINK FENCE - 8" SINGLE OR DOUBLE GATE
DETAIL H



CONCRETE WALK
DETAIL C

X:\P\F\CD\CDAL1240.dwg 12/10/2010 10:58:21 AM
 Author: C:\Users\jacob@roanokewater.com\AppData\Local\Temp\AutoCAD2010\jacob@roanokewater.com\jacob@roanokewater.com
 12/10/2010 10:58:21 AM

REV.	DATE	DRWN	CHKD	REMARKS

DESIGNED BY: A. TRAVAGLIA
 DRAWN BY: V. CARRON
 SHEET CHECKED BY: J. HOFFMAN
 CROSS CHECKED BY: B. STROUSE
 APPROVED BY: H. SLOOON
 DATE: APRIL 2010

CDM
 Construction Development
 8400 Grinnell Avenue, Suite 300
 Fairfax, VA 22031
 TEL: (703) 767-9900
 FAX: (703) 767-9900
 www.cdm.com

DARE COUNTY, NORTH CAROLINA
 ROANOKE ISLAND WATER SYSTEM
 EXPANSION PROJECT

CIVIL DETAILS
 SHEET NO. CD-5



PROJECT NO. 17952-71419
 FILE NAME: CD551D1
 SHEET NO. CD-5
 ISSUED FOR BID