



AGENDA

N.C. WILDLIFE RESOURCES COMMISSION

March 14, 2013, 9:00 a.m.

1751 Varsity Drive

NCWRC Conference Room, 5th Floor

Raleigh, North Carolina

This meeting is being recorded as a public record and is audio streaming live at www.ncwildlife.org. As a courtesy to others please turn off all cell phones and pagers during the meeting.

CALL TO ORDER - Chairman *David Hoyle, Jr.*

PLEDGE OF ALLEGIANCE

INVOCATION - *Commissioner John Litton Clark*

RECOGNITION OF VISITORS

MANDATORY ETHICS INQUIRY - North Carolina General Statute 138A-15(e) mandates that the Commission Chair shall remind all Commissioners of their duty to avoid conflicts of interest and appearances of conflict under this Chapter, and that the chair also inquire as to whether there is any known conflict of interest or appearance of conflict with respect to any matters coming before the Commission at this time. It is the duty of each Commissioner who is aware of such personal conflict of interest or of an appearance of a conflict, to notify the Chair of the same. *Chairman David Hoyle, Jr.*

APPROVAL OF MINUTES - Take action on the January 17, 2013 Wildlife Resources Commission meeting minutes as written in the exhibit and distributed to members (**EXHIBIT A**)

RECEIVE STATE ETHICS COMMISSION REVIEW OF 2012 STATEMENT OF ECONOMIC INTEREST FOR COMMISSIONER RICHARD EDWARDS - *Pursuant to NCGS §138A-15(c), any actual or potential conflict of interest by a public servant sitting on a board and cited by the Ethics Commission under NCGS 138A-24(e) is required to be read into the minutes of the applicable board.* Read into the minutes relevant portions of the evaluation by the N.C. Ethics Commission of the 2012 Statement of Economic Interest for Richard Edwards – *Chairman Hoyle*

ADMINISTRATION

Financial Status Report - Receive a financial status report on the Wildlife Operating Fund and Wildlife Endowment Fund - *Tommy Clark, Budget Officer (EXHIBIT B)*

COMMITTEE REPORTS

Habitat, Nongame and Endangered Species Committee Report – *Durwood Laughinghouse, Chairman*

Big Game Committee Report – *John Litton Clark, Chairman*

Education and Outreach Committee Report – *Dell Murphy, Chairman*

Land Use and Access Committee Report – *Jim Cogdell, Chairman*

Small Game Committee Report – *Mitch St. Clair, Chairman*

AGENCY SPOTLIGHT – COOPERATIVE RESEARCH WITH UNIVERSITIES – Receive an update from *Corey Oakley, Inland Fisheries Piedmont Research Coordinator*, about fisheries research projects conducted under cooperative agreements with universities.

DIVISION OF INLAND FISHERIES

Fisheries, Wildlife Education and Outreach Update - Receive an update on activities of the Division of Inland Fisheries - *Bob Curry, Inland Fisheries Division Chief*

DIVISION OF WILDLIFE MANAGEMENT

Wildlife Management Update – Receive an update on the activities of the Division of Wildlife Management – *Dr. David Cobb, Wildlife Management Division Chief*

Southern Wings Project – Consider approval of a three-year expenditure to support a partnership for full life-cycle conservation of piping plover – *David Cobb (EXHIBIT C)*

PROPERTY MATTERS

Phase I Land Acquisitions - Consider approval for staff to work with State Property Office and funding partners to develop acquisition plans for the following properties: *Isaac Harrold, Public Lands Section Manager (EXHIBITS D-1, D-2)*

- Harrison Heirs Tract – Martin County
- Sherrill Tract – Ashe County

Phase II Land Acquisitions - Consider final approval to proceed with acquisitions of the following properties: *Isaac Harrold (EXHIBITS E-1, E-2)*

- Truth Temple Tract – Ashe County
- Louise Thomas Tract – Moore County

Reallocation, Burke, Cleveland and Rutherford Counties - Consider reallocation of properties to clarify boundary between South Mountains Game Land and South Mountains State Park – *Isaac Harrold (EXHIBIT F)*

Easement Request, Currituck County– Consider a request from Dominion Power to expand an existing power transmission line easement on a portion of North River Game Land in Currituck County – *Isaac Harrold (EXHIBIT G)*

Lease, Brunswick County - Consider staff recommendation to lease property in Bolivia, NC as a work depot for lands management staff and equipment – *Isaac Harrold (EXHIBIT H)*

DIVISION OF LAW ENFORCEMENT

Law Enforcement Update – Receive an update on the activities of the Division of Law Enforcement- *Col. Dale Caveny, Law Enforcement Division Chief*

RULEMAKING

Fiscal Note Approval, Town of Hertford, Perquimans County – Consider approval of a fiscal note associated with a request by the Town of Hertford for a no wake zone on the Perquimans River in Perquimans County – *Norman Young, Rulemaking Coordinator (EXHIBIT I)*

Consideration of change in Rulemaking Cycle – Consider revising the schedule for state-wide public hearings for the 2014-2015 rulemaking cycle to January 2014 – *Gordon Myers, Executive Director (EXHIBIT J)*

COMMENTS BY CHAIRMAN – *David W. Hoyle, Jr.*

COMMENTS BY EXECUTIVE DIRECTOR – *Gordon Myers*

ADJOURN

EXHIBIT A
March 14, 2013



MINUTES
January 17, 2013
N. C. Wildlife Resources Commission Meeting
Raleigh, North Carolina

The January 17, 2013 meeting of the North Carolina Wildlife Resources Commission was called to order by *Commission Chairman* David W. Hoyle, Jr. at 9:00 a.m. in the Commission Room at Wildlife Resources Commission headquarters in Raleigh.

Commissioner Joe Barker led the Pledge of Allegiance. Commissioner Ray White gave the invocation.

MANDATORY ETHICS INQUIRY AND WELCOME

Chairman Hoyle advised the Commission of the mandatory ethics inquiry as presented in the agenda. Chairman Hoyle then welcomed the Commissioners and visitors present and recognized former employee Sarah Clapp, who is the Principal Clerk of the N.C. Senate; Senator Bill Rabon, who will swear in the new Wildlife Commissioner; and J. T. Windham, son of former Commissioner Steve Windham. Commissioner Mitch St. Clair was absent. Chairman Hoyle announced that the audio portion of today's meeting being streamed live and can be heard on the agency website.

COMMISSIONER ATTENDANCE

Ray White
Wes Seegars
Durwood Laughinghouse
David Hoyle, Jr.
Joe Barker
Berkley Skinner

Tom Berry
Mark Craig
Jim Cogdell
Dalton Ruffin
Dell Murphy
Hayden Rogers

Ray Clifton
John Litton Clark
Steve Windham
John Coley
Ray White
Richard Edwards

EXHIBIT A

March 14, 2013

VISITORS

Senator Bill Rabon
Sarah Clapp – NC Senate
Henri McClees – NC Sporting Dog Assn.
William Newton – NC Bowhunters Assn.
Diane Newton – NCBA
Karen Beck – NC Dept. of Agriculture

Ned Jones – NC Trout Unlimited
John Barbour – State Property Office
Fred Harris – NC Wildlife Federation
Joe McClees – NC Sporting Dog Assn.
J.T. Windham
Tom Ray – NCDA & CS

NOTICE OF APPOINTMENT OF COMMISSIONER RICHARD EDWARDS

Chairman Hoyle received into the Minutes **Exhibit A**, the Notice of Appointment by *Governor Bev Perdue of Commissioner At-Large* Richard Edwards to complete the term of Steve Windham. **Exhibit A** is hereby incorporated into the official record of this meeting.

ADMINISTER OATH OF OFFICE TO COMMISSIONER RICHARD EDWARDS

Chairman David Hoyle introduced *North Carolina Senator* Bill Rabon. Senator Rabon is a veterinarian from Brunswick County who is an avid hunter and fisherman, past chair of the NC Navigation Commission, and active with the Boy Scouts of America and Rotary Club. Dr. Rabon was elected to the North Carolina Senate for District 8 in November 2010. Senator Rabon administered the Oath of Office to *Commissioner At-Large* Richard Edwards, who was appointed by Governor Bev Perdue to fill the term of Steve Windham, which expires June 30, 2013. Steve Windham's son, J.T. Windham, held the Bible used for the Oath of Office.

A short recess was called so that photographs could be taken. The Commission meeting reconvened at 9:15 am.

MINUTES

Commissioner Berkley Skinner made a motion to approve the November 8, 2012 Wildlife Resources Commission Meeting minutes. The motion was seconded by Commissioner Dalton Ruffin and carried. **The Minutes**, titled **Exhibit B**, are hereby incorporated into the official record of this meeting.

ADMINISTRATION

Tommy Clark, *Budget Officer*, gave the financial status report on the Wildlife Operating Fund and Wildlife Endowment Fund as of November 30, 2012, presented in **Exhibit C**. The Operating Fund balance was \$23,273,361.89. The Endowment Fund balance was \$94,439,416.02. Exhibit C is hereby incorporated into the official record of this meeting.

EXHIBIT A

March 14, 2013

COMMITTEE MEETING REPORTS

Big Game Committee Meeting Report

John Litton Clark, *Big Game Committee Chair*, reported that the Big Game Committee met on Wednesday, January 16, 2013. The topics discussed were stabilization of the black bear population and inequities between allowing the use of bait for hunting bears with dogs and not allowing bait in still hunting. Included in discussions were bear hunters and property owners from across the state. The Committee will continue to discuss these issues to try to reach a more equitable compromise.

Habitat, Nongame and Endangered Species Committee Meeting Report

Durwood Laughinghouse, *Chair*, reported that the HNGES Committee met on January 16, 2013. Steve Williams gave a presentation on habitat suitability for elk within North Carolina. Williams's model is based on biological parameters and sociological constraints. A feasibility study will focus on human dimensions, continued cooperation with private landowners, and financial costs associated with the feasibility plan. Perry Sumner and Shannon Deaton, *Nongame Program Coordinators*, presented a historical perspective of nongame species conservation in North Carolina. Sumner and Deaton gave an update about how the listings for protected species are adopted and revised. Shannon Deaton advised the Commission that a website is available for taxpayers to make contributions to nongame programs. Upon the HNGES Committee's recommendation, the Commission adopted as permanent the draft plan that was adopted in July 2012 for augmentation of the Cape Fear Shiner.

Land Use and Access Committee Meeting Report

Committee Chair Jim Cogdell had laryngitis and was not able to give a report. On his behalf Isaac Harrold, *Public Lands Section Manager* reported that the Land Use and Access Committee met on January 16, 2013. Dr. David Cobb, *Wildlife Management Division Chief* and Professor Jaime Collazo of NC State University gave a project description and status update on a statewide habitat threat and risk assessment project. Isaac Harrold presented for discussion Phase I land acquisition plans in **Exhibits E-1, E-2, E-3, E-4, E-5** and Phase II land acquisition plans in **Exhibits F-1, F-2, and F-3** to be considered for a vote by the entire Commission. The Committee recommended approval of the land acquisition requests. The Committee received information about an easement request by Duke Energy in **Exhibit G** for a power transmission line in Henderson County with a recommendation to approve the request. Executive Director Gordon Myers updated the committee about the proposed conveyance of the McKinney Lake National Fish Hatchery to the State of North Carolina, presented in **Exhibit H**, to be voted on later in the meeting. Isaac Harrold notified the committee of a cooperative agreement that will authorize the City of Raleigh to construct a greenway on a portion of the Butner-Falls Game land.

EXHIBIT A

March 14, 2013

Joint Coastal Recreational Fishing License Committee Report

Ray White, *Chair*, reported that Joe Barker, Mitch St. Clair and he met with Marine Fisheries Commissioners Chris Elkins, Kelly Darden and Joe Shute at a joint CRFL Committee meeting in Washington, NC on December 4, 2012. After reviewing thirty-four projects, twenty projects were approved for funding with the Marine Resources Fund, at a cost of \$2,433,435. The Marine Resources Fund balance as of October 31, 2012 was \$8,116,246. Marine Resources Fund projects are allocated among three areas; people, fish, and habitats. The FY 2013-14 projects were allocated among those categories as follows:

People - Five projects (\$1,210,333)
Fish - Five projects (\$479,825)
Habitat - Ten project (\$743,277)

AGENCY SPOTLIGHT – *Wildlife in North Carolina* MAGAZINE UPDATE

Jim Wilson, *Editor* of the *Wildlife in North Carolina* magazine, presented an overview of changes that have been made to the magazine in the last one and one-half years to increase its operational efficiency. The implementation of a business plan for the magazine has resulted in savings of \$420,000 in operating costs through efficiencies in printing and a reduction in staff and contract contributors. Wilson stated that subscribers are holding steady at 44,000. The magazine now is printed bi-monthly. Marketing efforts have increased greatly, with the use of social media, trade shows, direct mail and email marketing, and a change in magazine content to appeal more to the majority of the readership who have some sort of hunting or fishing license. Wilson thanked the Commission for approving the business plan and for giving staff the opportunity to continue to produce this quality magazine, which has won more awards than any other state wildlife magazine.

INLAND FISHERIES UPDATE

Bob Curry, *Inland Fisheries Division Chief*, presented an update on the activities of the Inland Fisheries Division. Curry directed the Commissioners to information at their places regarding January 1, 2013 changes in creel limits for American shad in the Cape Fear River system and the Albemarle Sound, Roanoke River and Neuse River systems. He mentioned a report based on the USFWS' 2011 National Survey of Fishing, Hunting and Wildlife-Associated Recreation that ranks North Carolina as number 4 in the number of non-resident anglers and number 8 by angler expenditures. Curry mentioned that striped bass season opens on the Roanoke River on March 1. On January 30 the nominations close for the 2013 Thomas L. Quay Wildlife Diversity Award. Curry stated that the Fisheries Committee will meet on the Wednesday before the March 14, 2013 WRC meeting.

EXHIBIT A

March 14, 2013

WILDLIFE MANAGEMENT UPDATE

Dr. David Cobb, *Wildlife Management Division Chief*, presented an update about the activities of the Division of Wildlife Management. Cobb announced that CDs provided to each Commissioner contain documents and newsletters of interest including a survey from hunters of dove and woodcocks, the Gopher Frog Study, and the final report from the Strategic Recruitment and Retention Initiative that was held in October 2012. Cobb said that staff has begun work on rules proposals and is looking at suggestions from the public hearings that were held in September 2012.

2011-2012 CURE PROGRAM AND WILDLIFE CONSERVATION PLAN PROGRAM UPDATES

Dr. David Cobb presented in **Exhibit D** a 2011-2012 annual report on the Cooperative upland Habitat Restoration and Enhancement Program (CURE). When the CURE Program began in 2000 the focus was on use of private lands to enhance early successional habitats through the Wildlife Conservation Land Program (WCLP), with target species quail and nongame birds. The program expanded to include four state-owned game lands and corporate CURE, which works with corporate land owners. CURE programs benefit many species of birds as well as reptiles and amphibians. Funding through federal and Department of Justice grants provides additional opportunities to engage with county and state agencies on National Farm Bill issues. Recommendations include maintaining the Southeastern Focal Area as the premier private lands focal area for quail and early successional wildlife species and to explore opportunities to expand CURE activities on game lands. **Exhibit D** is hereby incorporated into the official record of this meeting.

PROPERTY ACQUISITIONS

Phase I Property Acquisitions Requests

Isaac Harrold, *Public Lands Section Manager*, presented **Exhibits E-1, E-2, E-3, E-4, and E-5**, the staff recommendation to work with the State Property Office and funding partners to develop acquisition plans for the following properties:

- Duvall Tract, Little Tennessee River – Macon County
- Lewiston Boating and Fishing Access Area, Roanoke River - Bertie County
- Deviney Tract – Rutherford County
- Truth Temple Tract – Ashe County
- Holt Tract – Warren County (donation)

Upon a motion by Berkley Skinner and second by Nat Harris, the Commission approved the staff recommendation to develop acquisition plans and to exempt the Holt Tract from Phase II requirements since it is a donation offered by the Tar River Land Conservancy. **Exhibits E-1, E-2, E-3, E-4 and E-5** are hereby incorporated into the official record of this meeting.

EXHIBIT A

March 14, 2013

Phase II Property Acquisition Requests

Isaac Harrold presented **Exhibits F-1, F-2, and F-3**, final acquisition details for a vote by the Commission on the following properties:

- Trout Lake (Lease) – Ashe County
- Browns Island Tract 2 – Carteret County
- Pinch Gut Phase IV Tract – Brunswick County

Nat Harris made a motion to approve the acquisitions. The motion was seconded by Joe Barker and carried. **Exhibits F-1, F-2, and F-3** are hereby incorporated into the official record of this meeting.

Easement Request – Henderson County

Isaac Harrold presented **Exhibit G**, a request by Duke Energy to expand an existing power transmission line easement on a portion of Green River Game Land in Henderson County for the purpose of adding additional guy wires. Berkley Skinner made a motion to approve the easement request. The motion was seconded by Dalton Ruffin and carried. **Exhibit G** is hereby incorporated into the official record of this meeting.

Conveyance – Mc Kinney Lake National Fish Hatchery

Executive Director Gordon Myers presented **Exhibit H**, an update to the Commission about the history of the ownership of the McKinney Lake National Fish Hatchery. The Fish and Wildlife Service announced in 1995 that they would discontinue operations of this hatchery and the Wildlife Resources Commission was directed to transfer it to state ownership. Since the transfer would make the WRC subject to the requirements of the Dam Safety Act and would encumber the agency to bear the cost of repair of severe deficiencies in the dam at the fish hatchery, the Fish and Wildlife Service and NCWRC entered into a MOU to transfer operations of the hatchery to the WRC without a financial encumbrance to repair the dam. The FWS worked with Congress to facilitate and pay for the remediation of the dam. The NCWRC grows channel catfish at the hatchery, which are used for the community fishing program in urban areas across the state. On December 28, 2012 Congress signed federal legislation to transfer ownership of the McKinney Lake Fish Hatchery to the State of North Carolina. Upon a motion by Joe Barker and second by Jim Cogdell the Commission voted to allow the NCWRC to work with the State Property Office to transfer the Fish Hatchery to the State. **Exhibit H** is hereby incorporated into the official record of this meeting.

MAY 2013 WRC MEETING DATE AND LOCATION CHANGE

On a motion by Berkley Skinner and second by Joe Barker, the Commission approved moving the date and location of the May meeting of the Wildlife Resources Commission. Instead of meeting in Raleigh on Thursday, May 9, the meeting will be held on **Friday, May 17, 2013** at Pine Knoll Shores at Atlantic Beach. **Committee meetings will be held on Thursday, May 16**, also at Pine Knoll Shores. An exact location for the meetings will be determined.

EXHIBIT A

March 14, 2013

COMMENTS BY THE CHAIRMAN

Chairman David Hoyle thanked Commissioner Hayden Rogers, Executive Director Gordon Myers, and Chief Deputy Director Mallory Martin for going with him to Cherokee to speak with representatives of the Eastern Band of the Cherokee about their vision for the enhancement of white-tailed deer on the Qualla Boundary. Chairman Hoyle thanked Big Game Committee Chair John Litton Clark, and Joe and Henri McClees for their assistance in inviting stakeholders to the Big Game Committee to discuss black bear issues. Hoyle thanked agency staff for their efforts in preparing for the meeting and committee meetings.

COMMENTS BY THE EXECUTIVE DIRECTOR

Executive Director Gordon Myers thanked Cherokee Principal Chief Michell Hicks and Natural Resources Director Forrest Parker for inviting the NCWRC to establish a formal relationship with the Eastern Band of Cherokees in working on wildlife conservation issues. Myers noted the completion of the report on the Strategic Recruitment and Retention Initiative. A formal SRRI Committee, led by Deet James, *Hunting Heritage Biologist*, will identify goals and tools for staff to evaluate performance of existing and new programs for recruitment and retention. As a test, programs will be targeted at each Education Center. Myers and Commissioner Dell Murphy encouraged Commissioners to come to a March meeting of the Youth Engagement Subcommittee where goals and ideas from the SRRI will be discussed further. Director Myers gave a short legislative update. He noted that the Legislature convened briefly on January 9 and then adjourned until January 30. Chris Dillon, *Legislative Liaison*, has been meeting with legislators. A late March Legislative Day is planned. Dillon will put together teams of Commissioners to meet with legislators on Legislative Day. Myers directed Commissioners to a blue paper in their notebooks, with information about improvements and access to the new Share Point site. He directed questions about the Share Point site to *Deputy Director* Cecilia Edgar.

COMMISSIONER COMMENTS

Commissioner Durwood Laughinghouse suggested that increasing time demands from important committee meetings warrant consideration of Tuesday afternoon committee meetings, or shorter committee meetings after the Thursday business meeting of the NWRC. Jim Cogdell urged Commissioners to attend and support hunter skills tournaments in their areas. Cogdell noted that some counties are attempting to outlaw shooting clays. Cogdell hopes that the Shooting Sports subcommittee will become more active to address these issues. Tom Berry thanked the Commission for increasing discussions about short-term Elk Management Plans and a focus on forest lands. A human dimensions study will be done to gather landowner opinions. Dr. Cobb will provide information to the Elk Foundation. David Hoyle asked Dr. Cobb to include the presentation about the decline of hunting areas on the Share Point site too. A roads layer will be added to the maps.

EXHIBIT A
March 14, 2013

ADJOURNMENT

Chairman David Hoyle reminded the Commissioners that accommodations for the March 14 meeting will be at a new hotel, the Hyatt Place Raleigh West. There being no further business, the meeting was adjourned by Chairman Hoyle at 10:50 a.m.

All exhibits are incorporated into the official record of this meeting by reference and are filed with the minutes.

March 14, 2013

David W. Hoyle, Jr., Chairman

Date

March 14, 2013

Gordon Myers, Executive Director

Date

NORTH CAROLINA WILDLIFE RESOURCES COMMISSION

Summary and Analysis of Agency Operating Cash Balance - Code 14350, 24350, 24351 and 24352

EXHIBIT B
March 14, 2013

	January 2012			January 2013		
Cash Balance July 1		\$ 20,845,004.99			\$ 22,177,706.67	
Appropriations	2011-2012 Authorized Budget	Actual	% of Budget	2012-2013 Authorized Budget	Actual	% of Budget
Appropriations	\$ 18,438,511.00	\$ 10,329,364.00		\$ 18,476,588.00	\$ 11,601,966.00	
Total	\$ 18,438,511.00	\$ 10,329,364.00	56.02%	\$ 18,476,588.00	\$ 11,601,966.00	62.79%
Receipts						
License Receipts		\$ 11,258,491.25		\$ 16,525,700.00	\$ 11,040,167.75	
Vessel Receipts		2,491,740.00		1,073,131.00	2,528,555.00	
Federal Funds		10,824,953.00		18,074,654.00	11,932,223.74	
Timber Sales		1,332,809.73		2,853,578.00	1,904,100.11	
Magazine Subscriptions		245,394.41		315,432.00	277,466.83	
Agency Reimbursements		435,981.58		183,561.00	339,816.97	
Other Receipts		2,516,477.26		8,489,051.00	1,937,413.42	
Total	\$ -	\$ 29,105,847.23		\$ 47,515,107.00	\$ 29,959,743.82	63.05%
Expenditures						
2100 Administration	\$ 8,271,122.00	\$ 4,560,201.51		\$ 8,543,598.00	\$ 4,794,361.20	
2120 Enforcement	21,435,364.00	12,429,888.76		21,035,691.00	12,721,099.42	
2130 Education	4,438,939.00	2,129,054.70		4,040,999.00	1,911,473.49	
2140 Inland Fisheries	9,151,444.00	5,293,961.32		11,828,140.00	6,900,319.90	
2150 Management	15,358,119.00	8,048,279.25		10,658,039.00	7,630,093.34	
2160 Engineering Services	7,855,538.00	5,391,897.04		12,881,934.00	6,546,594.28	
2170 W/Life Fund Receipts	2,383,968.00	651,219.98		3,998,906.00	2,338,544.10	
Total	\$ 68,894,494.00	\$ 38,504,502.56	55.89%	\$ 72,987,307.00	\$ 42,842,485.73	58.70%
Cash Balance January 31		\$ 21,775,713.66			\$ 20,896,930.76	

NORTH CAROLINA WILDLIFE RESOURCES COMMISSION

ENDOWMENT FUND YEAR-TO-DATE

	<u>Jan-12</u>	<u>Jan-13</u>
Balance December 1	\$ 87,418,783.69	\$ 95,139,966.76
Plus: Revenues from Sales	210,082.50	263,998.60
Return on Investment	515,566.09	391,819.26
	<hr/>	<hr/>
	88,144,432.28	95,795,784.62
Less: Transfers Out	-	-
	<hr/>	<hr/>
Balance December 31	\$ 88,144,432.28	\$ 95,795,784.62
	<hr/>	<hr/>
Market Value	\$ 97,669,289.21	\$ 104,333,267.05

Endowment Fund Interest

<u>Sources of Interest Available</u>	<u>Expendable</u>	<u>Non Expendable</u>	<u>Transferred to Operations</u>	<u>Transferred to Capital Projects</u>
ADULT Licenses	\$ 12,698,429.93	\$ -	\$ -	\$ -
INFANT Licenses	-	8,945,246.72		
YOUTH Licenses	-	742,506.12		
Magazine Subscriptions	423,040.90	-		
Contributions - General	512,461.42	-		
Contributions - Diversity	76.12			
TOTAL	\$ 13,634,008.37	\$ 9,687,752.84	\$ -	\$ -

2012-13 Budgeted Obligated

Allocation of Endowment Interest - Sportsman Fund	3,972,912.00
Allocation of Endowment Interest - Magazine Fund	258,514.00
	<hr/>
	\$ 4,231,426.00

2012-13 Transferred To Date

To Sportsman Fund	-
To Magazine Fund	-
To Capital Projects	-
	<hr/>
	\$ -

EXHIBIT C

March 14, 2013

Project Title: Southern Wings Piping Plover Conservation

WRC Funding: 2013: \$3,500
2014: \$4,500
2015: \$4,500

Funding Source: Nongame and Endangered Wildlife Fund Donations

Background:

In 2006, a comprehensive survey of Piping Plovers was conducted for the fourth time in a 15 year period across the shorebird's winter and breeding ranges in the United States, Canada, France (islands near Canada), Mexico, and the Caribbean. This type of census has occurred at 5-year intervals since 1991 to provide the data to assess Piping Plover population status and distribution. The effort, coordinated by the U.S. Geological Survey (USGS) Forest and Rangeland Ecosystem Science Center, is called the International Piping Plover Census. Management agencies use the information to assess progress toward recovery goals for this shorebird. The piping plover is protected under the U.S. Endangered Species Act and has a worldwide population of about 8,000 birds.

For years, biologists have been troubled by consistently lower numbers of birds found in the wintering grounds when compared to the breeding grounds. Piping plovers are extremely well-studied on their breeding grounds and strict management measures, including within North Carolina, have been enacted to protect this species during this part of its lifecycle. In 2006, expanded coverage outside the United States led to the discovery of a large population of piping plovers in the Bahamas (417 birds or 10.7 percent of the winter total). This contrasted significantly with the 1991 census in which only 35 birds were detected. Additional focus and resources were directed to the Bahamas again during the 2011 census.

In January and February of 2011, the U.S. Fish and Wildlife Service partnered with the U.S. Geological Survey, National Audubon Society, Canadian Wildlife Service, Bird Studies Canada, Bahamas National Trust and several other groups for an unprecedented effort to count wintering piping plovers. The effort meant more people, more coordination, more eyes on the ground and most importantly, more birds discovered. Biologists were able to access areas of prime piping plover habit, some of which had never been surveyed before.

Biologists counted more than 1,000 individual piping plovers, distinguishing the Bahamas as hosting the second-highest wintering population in the world and 20 percent of the entire Atlantic Coast population. Because piping plovers have international distribution and are migratory, these international efforts and collaborations are essential to the conservation of the species. The piping plover survey illustrates the importance of collaborative shorebird conservation efforts across international boundaries. Much like our collaboration with Ducks

Unlimited in which we contribute to conservation of waterfowl habitat in Canada, this shorebird conservation partnership helps conserve this species across habitats used throughout its life cycle including their breeding grounds, migration and winter habitats.

Southern Wings Piping Plover Project

Overall Project Goals:

The primary goal of this project is to protect and manage key sites on Andros, the Joulter Cays and the Berry Islands.

Gaining official protection for these sites is only the first step in protecting the plovers. Our in-country partner, the Bahamas National Trust (BNT), is responsible for managing 27 national parks across the islands on a strained budget. As a result, few of the sites currently managed by BNT have conservation plans and none, at this time, have species-driven conservation goals. In response, Audubon is not only conducting the research to prove the sites' significance and ensure that the evidence is presented to the government, but they are developing local capacities and supporting the development of conservation plans with specific goals and objectives related to the plovers and other important fauna and flora. To ensure that the plans are carried out, Audubon is working with the BNT and other partners to train local people as volunteers and citizen scientists who can monitor plover populations and call attention to the need for enforcement when infringements occur.

Project objectives over the next 3 years to reach the project goal include:

1. Educate and engage schoolchildren on the importance of the Bahamas for the Piping Plover and other shorebirds that breed in the U.S., to influence future decisions Bahamians will make to help ensure a future for Piping Plovers and other shorebirds. This will grow as the program develops.
2. Develop a Citizen Science network, beginning on the Island of Andros, to collect data and engage more people in the conservation activities needed to preserve and manage these sites.
3. Develop the science capacity of our partner, the Bahamas National Trust, to support improved management of the protected areas throughout the Bahamas for the National Protected Area System.
4. Conduct more extensive shorebird research to identify additional sites that support migrating and wintering Piping Plovers and other important shorebirds.
5. Incorporate the Joulter Cays into the National Protected Area System for the long-term conservation of this critical site.

North Carolina Wildlife Resources Commission participation will be directed towards enhancing and expanding research, survey, and monitoring efforts that will ultimately assist us with:

- Determining trends in species distribution and abundance.
- Assessing progress of recovery efforts toward downlisting and delisting.
- Quantifying habitat use in breeding, migration, and winter
- Identifying areas of special concern
- Providing input data for population models

TOTAL PROJECT BUDGET

Item	Year 1	Year 2	Year 3
<u>Community Education and Citizen Science Development</u>			
Staff time, BNT	\$3,000.00	\$7,000.00	\$10,000.00
Staff time, NAS	\$2,000.00	\$2,000.00	\$2,000.00
Travel	\$1,500.00	\$1,500.00	\$2,000.00
Equipment &	\$3,500.00	\$2,000.00	\$2,000.00
Facilities and food	\$1,500.00	\$1,500.00	\$2,000.00
Survey Coordination & Training	\$7,000.00	\$7,000.00	\$7,000.00
Telecommunications	\$300.00	\$300.00	\$300.00
Subtotal	\$18,800.00	\$21,300.00	\$25,300.00
<u>Scientific Research and Capacity Development</u>			
Staff time, BNT	\$10,200.00	\$20,000.00	\$37,000.00
Staff time, NAS	\$11,700.00	\$11,700.00	\$11,700.00
Travel & Accommodations	\$7,080.00	\$7,080.00	\$7,080.00
Equipment and Boat Rental	\$8,500.00	\$8,000.00	\$8,000.00
Subtotal	\$37,480.00	\$46,780.00	\$63,780.00
<u>Protection of Joulter Cays and Management</u>			
Staff time, BNT	\$13,000.00	\$10,000.00	\$10,000.00
Staff time, NAS	\$5,000.00		
Travel	\$9,440.00	\$800.00	\$800.00
Equipment & Office Expenses	\$1,500.00	\$500.00	\$500.00
Consultants & Government Relations	\$5,810.00	\$7,300.00	\$3,200.00
Community outreach workshops	\$2,100.00	\$1,000.00	\$1,000.00
Publicity	\$4,000.00	\$2,000.00	\$1,000.00
Subtotal	\$40,850.00	\$20,800.00	\$16,500.00
Indirect Costs (15%)	\$14,569.50	\$13,332.00	\$15,837.00
Total	\$111,699.50	\$102,212.00	\$121,417.00

Matching funds: \$50,000 match has been secured for the protection of the Joulter Cays for the first year. Additional match will be acquired from foundations (E.g., Disney), private donors, Audubon, and in-kind contributions from Bahamas National Trust and other conservation partners.



**TEN YEAR VISION
2012-2022**

Southern Wings Program
444 North Capitol Street, Suite 725
Washington, DC 20001
+001 202-624-8917
+001 202-624-7891 (fax)
dhahn@fishwildlife.org
Skype: deb_hahn



EXECUTIVE SUMMARY

The state fish and wildlife agencies share migratory birds not only with each other but with other countries across the globe. Partners in Flight *Saving our Shared Birds* report acknowledges that almost half of the native landbirds (418 species) in North America rely on habitats in at least 2 of its 3 countries—United States, Canada, and Mexico (Berlanga et al. 2010). Eighty percent of all shorebirds breeding in United States, Canada, and Mexico are also shared among the three countries. Neotropical migrants travel hundreds and even thousands of miles between breeding and wintering grounds and depend on habitats throughout their entire journey. Their conservation cannot be accomplished in one park, one country, or in some cases, even on one continent. It depends on the collective partnership of conservationists across the Western Hemisphere. Birds are not aware of political borders, but their challenges transcend these boundaries and so must our planning and initiatives on their behalf.

Birds are also indicators of the health of our ecosystems. The 2009 *State of the Birds Report* (NABCI 2009) provided the first comprehensive, national look at how birds are faring across major biomes. The report identified concerns for many species. For example, there is high concern for coastal shorebirds because of dwindling food supplies and disturbance of their habitats. Dramatic declines in grassland birds highlight both the loss and degradation of one of our most endangered habitats. Grasslands are also our only tri-national terrestrial habitat in North America and require cooperation among countries to conserve shared species.

Amidst all of this, birds are one of our most cherished resources. They are photographed, watched, hunted, fed, and enjoyed by millions of Americans. In 2006, there were over 48 million birdwatchers or birders in the U.S. Birders spent an estimated \$12 billion on trip expenditures and \$24 billion on equipment expenditures and generated over \$82 billion in total industry output (Carver 2009).



To sustain healthy bird populations into the future, state wildlife agencies and their partners spend substantial amounts of money managing habitat, monitoring species status, conserving habitat, and educating the public. However, they recognize that, as a shared resource, their investments within our borders are not enough. To protect the tremendous conservation actions within their states, state wildlife agencies can work through the Southern Wings Program, one mechanism to build partnerships and support ongoing bird conservation projects in Mexico, Central America, South America and the Caribbean. Southern Wings seeks to work with our conservation colleagues in these regions and support their efforts to benefit the conservation of migratory birds linked to the individual states. Our partners are equally passionate, dedicated, and knowledgeable about the needs for conservation of our shared migratory birds.

Since 2009, the Southern Wings Program has been the mechanism to help facilitate state wildlife agency involvement in these projects. In the first 2 years, state agencies and their U.S. partners have contributed over \$250,000 that was then matched before contributing to an on-the-ground project. Projects with Mexican and Colombian partners have helped state fish and wildlife agencies support the management of grasslands in Saltillo, tropical woodlands in the Yucatan Peninsula, and wetlands in the Colorado River Delta in Mexico; the conservation of Andean forest in Colombia and priority habitats in Nicaragua and much more. All of these projects are in critical areas for priority migratory bird species such as Cerulean Warblers, Golden-winged Warblers, and Long-billed Curlews.

This document provides the vision to move the Southern Wings Program forward over the next 10 years. The goals are as follows.

- I. Fifty states contribute resources to, and participate in, the Southern Wings Program.
- II. By 2022, \$2 million is invested annually by states in Southern Wings projects.
- III. By 2022, sixty state agency priority migratory bird species have benefited from Southern Wings projects through land conservation and acquisition, management to improve habitat, outreach to private landowners and cooperators, and government and landowner support for conservation of important habitats.



- IV. By 2022, twenty-five formal partnerships between state wildlife agencies and Mexico, Central America, South America and Caribbean partners are established and support successful implementation of Southern Wings Program projects.
- V. By 2022, twenty-four project areas have been or are being supported by the Southern Wings Program.
- VI. By 2022, communication and information exchange is occurring among participating state wildlife agencies and between agencies and Mexico, Central America, South America and Caribbean partners.

The goals have associated objectives that are also measurable and achievable. The Southern Wings Leadership Team will define specific strategies to achieve the goals and objectives over the short and long term. The state agencies involved in the Southern Wings Program, the Bird Conservation Committee, and the Southern Wings Program's Leadership and Technical Committees will employ this collective vision to reach out to other state wildlife agencies and partners that want to participate in the conservation of our shared migratory bird resource.



EXHIBIT D-2

March 14, 2013

North Carolina Wildlife Resources Commission Land Acquisition Investigation Form

-PHASE I: INITIAL INVESTIGATION-

WRC Staff Contact: Gordon Warburton/Kip Hollifield

Date First Presented to WRC: First presented to WRC 2/11/2009 but unable to acquire at that time due to a backlog of available tracts and funding limitations. The tract was again offered to WRC in December 2012.

Tract Name: Sherrill Tract

Acreage: 205 acres

County: Ashe

Estimated Value: estimated value is \$500,000 - \$700,000 (not based on appraisal – landowner willing to negotiate)

Property Owner or Representative: Anderson Sherrill (estate trust from late brother)

Phone: 704-873-4945 (home)
704-402-6630 (cell)

Address:

3209 Deauville PL
Statesville, NC 28625

Status: High Interest Moderate Interest Low Interest No Interest

Grant Potential: NHTF CWMTF

OTHER (explain): possible private donations via The Nature Conservancy

Resources Assessment and Biological Benefits (brief):

Acquisition of this property is significant as part of the total management project being carried out by governmental agencies and NGOs in the Three Top Mountain area. WRC ownership of the tract will help ensure ecosystem integrity of the area by increasing connectivity of lands in conservation ownership such as Three Top Mtn. and Pond Mtn. Game Lands, Mount Jefferson and New River State Parks, and various private holdings that are in conservation ownership or have conservation easements that are located in the vicinity. WRC ownership will reduce land fragmentation as well.

Management objectives will include restoring or maintaining the oak forest and cove forest priority wildlife habitats that are located on the tract. WRC ownership may provide opportunities to create some early successional habitat as well, which is also a priority wildlife habitat. Public recreational opportunities will include hunting, hiking, bird watching, photography, and general nature study. Educational opportunities may exist as priority wildlife habitats are managed for or maintained. The

entire tract is forested with Appalachian oak, Appalachian cove, and dry-mesic oak forests predominant. Common wildlife species found on the tract include wild turkey, black bear, white-tailed deer, gray squirrel, ruffed grouse as well as various songbirds, salamanders, and small mammals. The tract is part of the nationally significant Three Top Mountain Natural Heritage Area.

Additional Comments:

Acquisition of the Sherrill tract would solidify WRC ownership of Three Top Mtn. GL at its eastern end. Saddle Gap Rd. (SR 1194) would provide direct access to the tract and indirectly provide access to a portion of Three Top Mtn. GL that currently has no reasonable public access. Acquisition of the Sherrill tract would in effect provide access to approximately 500 acres of Three Top Mtn. GL that currently has no public access. There is room for a small parking area adjacent to an existing gravel road that runs across the tract which provides access to an adjacent property/house. The access road and potential parking area lie within the outer portion of a 300 foot stream buffer. If CWMTF funds are used for purchase of the stream buffer area, the establishment of a parking area would be subject to CWMTF approval.

There are approximately 2,163 feet of streams on the Sherrill tract, with a corresponding 63 acres of stream buffer.

Program Potential: Game Land - Three Top Mountain Game Land Addition

Wildlife Conservation Area Fishing Access Area None

Potential Source(s) of Stewardship Funds (indicate federal:state match rates): Pittman-Robertson Federal Assistance Grant (75% federal; 25% state)

Relative Priority Evaluation Score (attach worksheet):

Recommendation: Pursue Acquisition Defer Do not Pursue Acquisition

Map Attached: Yes No

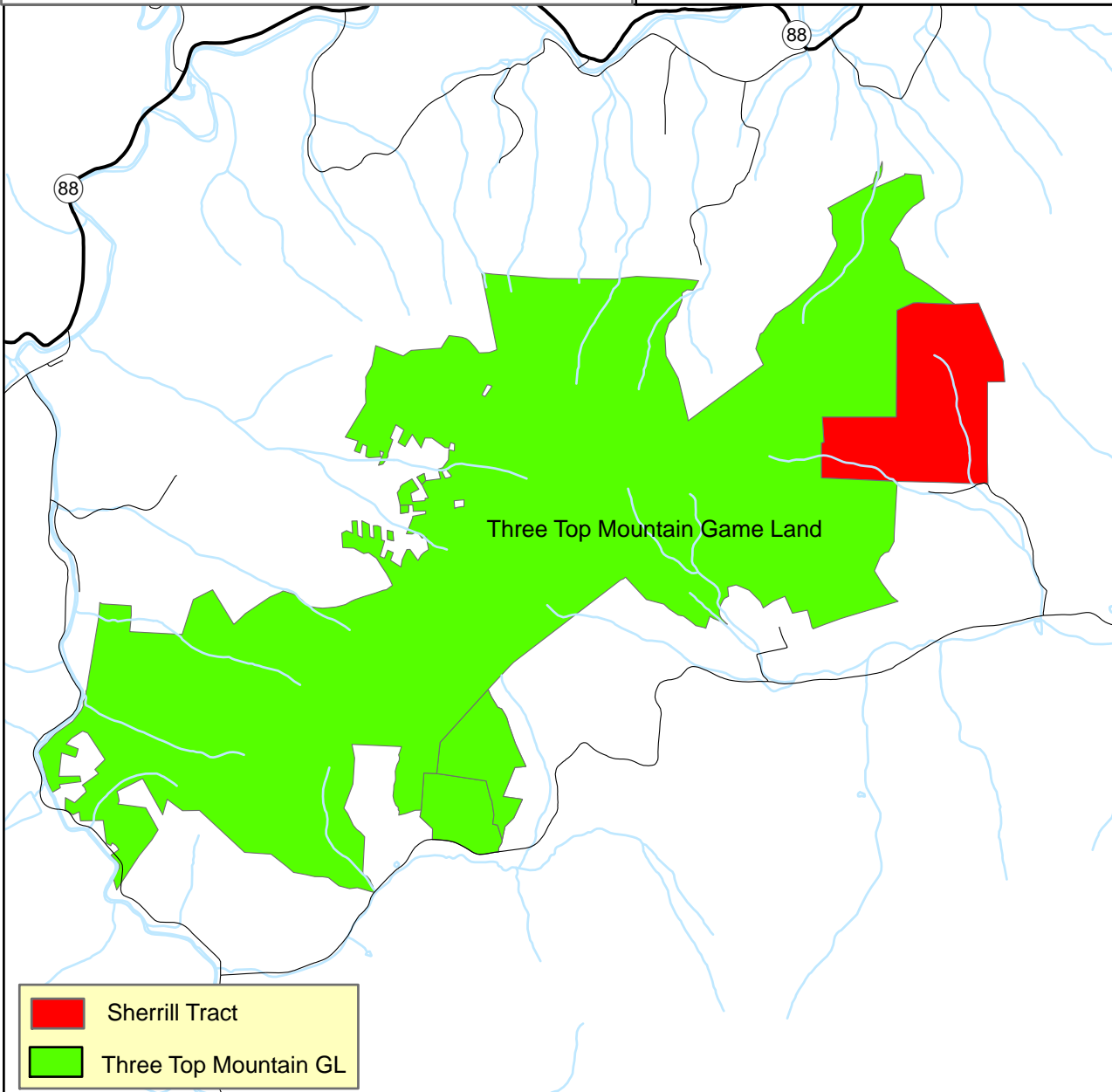
WORKSHEET

Relative Priority Evaluation for Conservation Lands

Tract Name (Three Top Mountain GL) Sherrill Tract – Ashe County

Criterion	Score (1-5) 5=Excellent 1=Poor
1. Augments existing protected lands by addressing an inholding or adjacent tract, provides key access, buffers or connects existing WRC-managed lands.	<u>5</u>
2. Represents good hunting, fishing, wildlife viewing, and other resource-based recreational opportunities.	<u>4</u>
3. No conflicting surrounding land uses.	<u>4</u>
4. Serves as a wildlife corridor between areas already protected for conservation purposes and provides connectivity to priority Wildlife Action Plan habitats.	<u>5</u>
5. Augments land conservation efforts on a landscape scale by providing nuclei (“anchors”) for regional conservation efforts, corridors, key linkages between conservation areas, or keystone tracts.	<u>5</u>
6. Fills a need identified by the Wildlife Action Plan, such as critical, rare or unique habitats; natural heritage elements; or significant aquatic/terrestrial resources.	<u>4</u>
7. Is this an area in which we would like to establish a new game land, wildlife conservation area, or fishing access?	<u>NA</u>
8. Is it large enough to be a new game land, and if not, are there possibilities for expansion (goal 3,000-5,000 acre minimum)?	<u>NA</u>
9. Is area adequate for fishing access development with suitable parking, and if not, are there possibilities for expansion?	<u>NA</u>
TOTAL SCORE	<u>27</u>

Sherrill Tract Three Top Mountain GL Ashe County 205 Acres



February 22, 2013

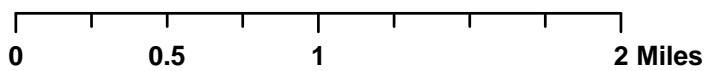


EXHIBIT D-1

March 14, 2013

North Carolina Wildlife Resources Commission Land Acquisition Investigation Form

-PHASE I: INITIAL INVESTIGATION-

WRC Staff Contact: Dale J. Davis/Tommy K. Hughes

Date First Presented to WRC: 3/14/2013

Tract Name: Harrison Heirs Tract

Acreage: 259.40

County: Martin

Estimated Value: \$ 350,000 asking price

Property Owner or Representative: Eddie Vanderford, Owner-Vanderford Real Estate

Phone: (W) 252-714-5016; (C) 252-714-5016

Address: P.O. Box 910, Robersonville, N.C. 27871

Status: High Interest Moderate Interest Low Interest No Interest

Grant Potential: NHTF CWMTF

OTHER (explain):

Resources Assessment and Biological Benefits (brief): Property is an inholding located adjacent to the Conoho Farms Tract of Lower Roanoke River Game Land in Martin County. The tract has been in the Harrison family for many years. The tract is approximately 40 acres of agricultural fields, 40 acres of thinned pines approximately 20 yrs. old, and the remaining 179 acres is comprised of bottomland hardwoods with most of this are being clearcut in the past 3 years. There are a few acres of drains and streamside management zones that are left intact of bottomland hardwood trees such as Gum and Cypress. The property contains a high population of deer and wild turkey and the cutover bottomland provides an excellent wintering and feeding area for migratory waterfowl. Neo-tropical migrant songbirds are also abundant on this tract. This tract is of high importance to NCWRC due to being an inholding and would provide greater connectivity to our current holdings. The Conoho Farms tract is included in our Permit Hunts Program and offers excellent hunting opportunities to sportsmen. NCWRC Wildlife Action Plan Priority habitats and species are present on this property and adjacent property. According to Natural Heritage database data, this area and surrounding areas either provides or has potential to provide Colonial Wading Bird Colonies for Egrets and Herons. There are 3 vascular plants

(Crowfoot Sedge, Catchfly Cutgrass, and Smooth Hedge-Nettle) that contain a Global and State rank in this area. The Southeastern Myotis is found in this area, which has a status of “Federal Species of Concern”. This area also provides habitat for the Cerulean Warbler, which also is a “Federal Species of Concern”.

Based upon data found in the NC Conservation Planning Tool, the CPT Biodiversity index averaged a score of 8 out of 10 (10 is highest possible score). The Natural Heritage Biodiversity Wetlands score also averages 8 out of a possible 10. The Biodiversity/Wildlife Habitat Index prioritizes aquatic and terrestrial habitat, landscape function and connectivity. Areas that support this level of species richness should be targeted for protection.

Additional Comments:

Program Potential: Game Land-Lower Roanoke River Game Land Addition

Wildlife Conservation Area Fishing Access Area None

Potential Source(s) of Stewardship Funds (indicate federal:state match rates): Pittman-Robertson Federal Assistance Grant (75% federal; 25% state)

Relative Priority Evaluation Score (attach worksheet):

Recommendation: Pursue Acquisition Defer Do not Pursue Acquisition

Map Attached: Yes No

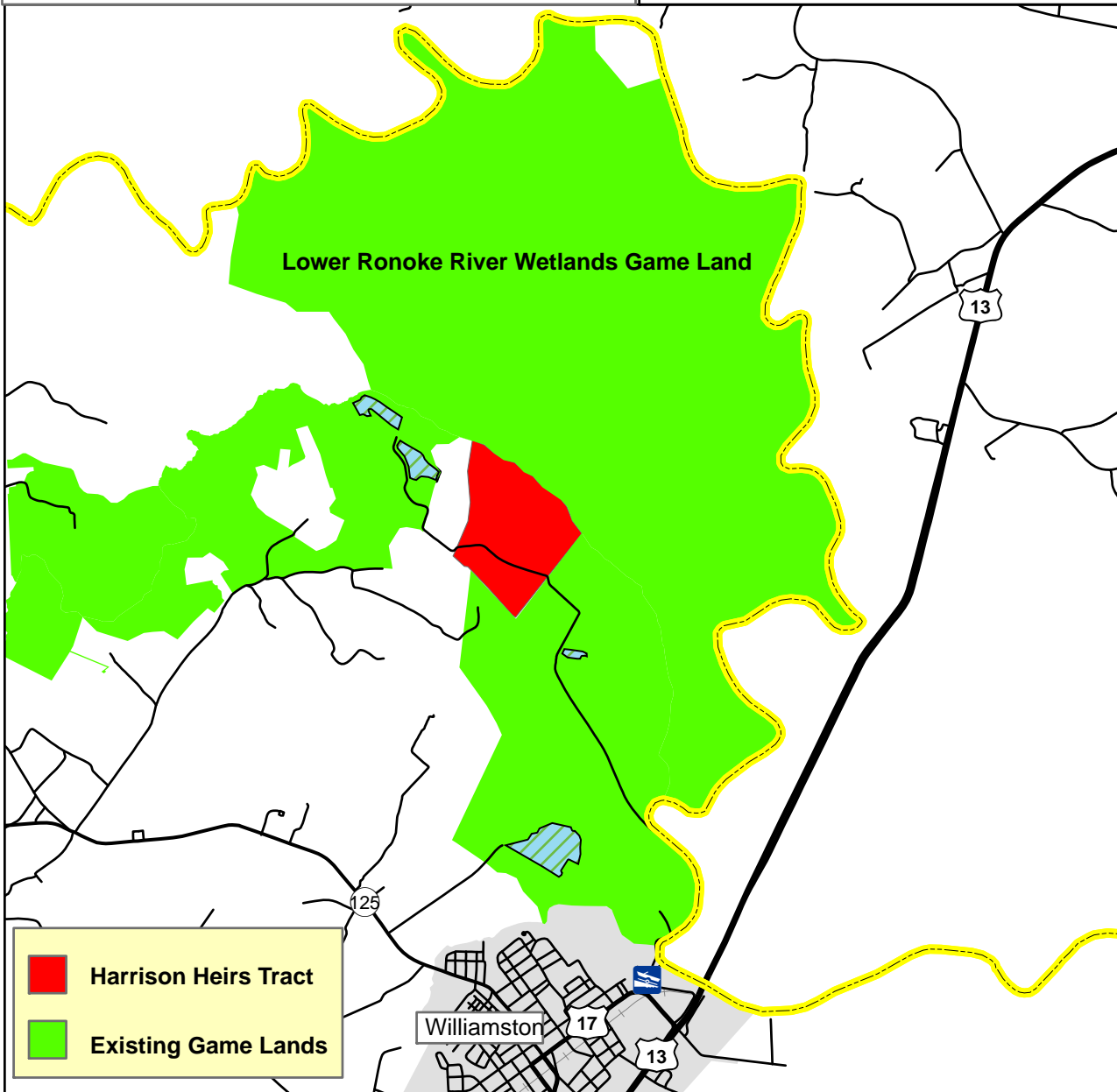
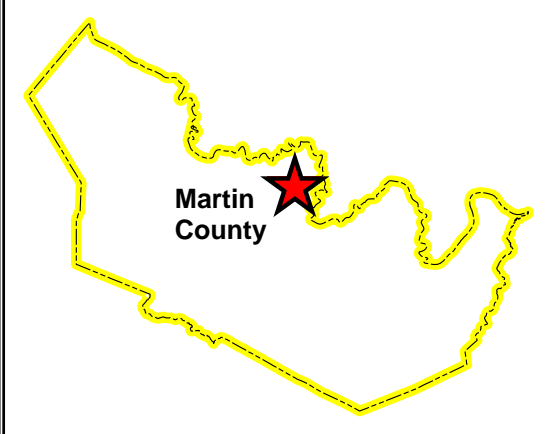
WORKSHEET

Relative Priority Evaluation for Conservation Lands

Tract Name (Lower Roanoke River GL) Harrison Heirs Tract - Martin County

Criterion	Score (1-5) 5=Excellent 1=Poor
1. Augments existing protected lands by addressing an inholding or adjacent tract, provides key access, buffers or connects existing WRC-managed lands.	<u>5</u>
2. Represents good hunting, fishing, wildlife viewing, and other resource-based recreational opportunities.	<u>5</u>
3. No conflicting surrounding land uses.	<u>5</u>
4. Serves as a wildlife corridor between areas already protected for conservation purposes and provides connectivity to priority Wildlife Action Plan habitats.	<u>5</u>
5. Augments land conservation efforts on a landscape scale by providing nuclei (“anchors”) for regional conservation efforts, corridors, key linkages between conservation areas, or keystone tracts.	<u>5</u>
6. Fills a need identified by the Wildlife Action Plan, such as critical, rare or unique habitats; natural heritage elements; or significant aquatic/terrestrial resources.	<u>5</u>
7. Is this an area in which we would like to establish a new game land, wildlife conservation area, or fishing access?	<u>N/A</u>
8. Is it large enough to be a new game land, and if not, are there possibilities for expansion (goal 3,000-5,000 acre minimum)?	<u>N/A</u>
9. Is area adequate for fishing access development with suitable parking, and if not, are there possibilities for expansion?	<u>N/A</u>
TOTAL SCORE	<u>30</u>

Harrison Heirs Tract Martin County 259 Acres



- Harrison Heirs Tract
- Existing Game Lands

February 27, 2013

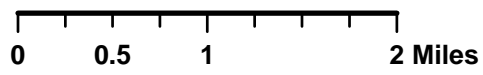


EXHIBIT E-1

March 14, 2013

North Carolina Wildlife Resources Commission Land Acquisition Investigation Form

-PHASE II: FINAL ACQUISITION DETAILS-

WRC Action/Approval to Pursue (Date): January 17, 2013

Tract: Truth Temple Tract; Ashe County, 128 Acres

Acquisition Plan (specify total project cost, each source, and amount of OBLIGATED funds):

Accept donation of the property from The Blue Ridge Conservancy

Based on Appraisal: Yes No NA

If Yes, Name of Appraiser:

Date of Appraisal: NA

Appraisal Handled by State Property Office: Yes No NA

Acquisition Plan Includes Bargain Sale: Yes No

If Yes, Explain Details:

Source(s) of Stewardship Funds (indicate federal:state match rates):

Pittman-Robertson Federal Assistance Grant (75% federal: 25% state)

Five Year Stewardship Costs & Revenue Projection Evaluation (attach worksheet)

Five Year Estimate of Total Stewardship Expenditures:	\$:	\$20,500
Five Year Estimate of Total Projected Revenue:	\$:	\$0

Additional Comments: NA

TRUTH TEMPLE TRACT WORKSHEET
Five Year Stewardship Costs and Revenue Projections
(Five Years Post Acquisition)

STEWARDSHIP					
Estimated Stewardship Expenditures					
Tract Name	Activity	Quantity	Unit	Unit Cost	Total Cost
Truth Temple Tract	Boundary Development (survey/paint/sign)	12,800	ft.	\$1.25	\$16,000.00
	Install Gates	2	ea.	\$750.00	\$1,500.00
	Establish Parking Areas	1	ea.	\$3,000.00	\$3,000.00
Total					\$20,500.00

REVENUE					
Estimated Revenue Projections					
Tract Name	Source	Quantity	Unit	Unit Revenue	Total Revenue
Truth Temple Tract	NA	NA	NA	NA	\$ -
Total					\$ -

North Carolina Wildlife Resources Commission Land Acquisition Investigation Form

-PHASE I: INITIAL INVESTIGATION-

WRC Staff Contact: Gordon Warburton/Kip Hollifield

Date First Presented to WRC: January 17, 2013

Tract Name: Truth Temple Tract

Acreage: 128 acres

County: Ashe

Estimated Value: NA – offered as a donation by Blue Ridge Conservancy

Property Owner or Representative: Blue Ridge Conservancy (Eric Hiegl)

Phone: (828) 264-2511

Address: P.O. Box 568, Boone, NC 28607

Status: High Interest Moderate Interest Low Interest No Interest

Grant Potential: NHTF CWMTF

OTHER (explain): NA – donation from Blue Ridge Conservancy

Resources Assessment and Biological Benefits (brief):

Acquisition of this property is significant as part of the total management project being carried out in the Pond Mountain area. WRC ownership of the tract will help ensure ecosystem integrity of the area by increasing connectivity of lands in conservation. WRC ownership will reduce land fragmentation as well. Acquisition of the Truth Temple tract is also advantageous since it would provide an additional public access point to Pond Mountain Game Land. This access point will provide public access not only to the Truth Temple tract, but also to the Braun tract. Management objectives will include restoring or maintaining the oak forest and cove forest priority wildlife habitats that are located on the tract. WRC ownership may provide opportunities to create some early successional habitat and northern hardwood forest as well, which are also priority wildlife habitats. Public recreational opportunities will include hunting, hiking, bird watching, photography, and general nature study. The entire tract is forested with Appalachian oak and Appalachian cove forests predominant on the tract. Common wildlife species found on the tract include wild turkey, black bear, white-tailed deer, gray squirrel, ruffed grouse as well as various songbirds, salamanders, and small mammals. The tract is part of the state significant Pond Mountain Natural Heritage Area.

Additional Comments: There is an inholding of approximately 10 acre located in the Truth Temple tract that contains a lodge, cabin, and outbuilding. WRC would hold an unencumbered access easement through the inholding, however significant public travel through the inholding would be problematic. The physical characteristics of the tract will allow WRC to funnel the public around the inholding via an existing logging road.

Program Potential: Game Land Wildlife Conservation Area Fishing Access Area
 None

Potential Source(s) of Stewardship Funds (indicate federal:state match rates):

Pittman-Robertson Federal Assistance Grant (75% federal: 25% state)

Relative Priority Evaluation Score (attach worksheet):

27

Recommendation: Pursue Acquisition Defer Do not Pursue Acquisition

Map Attached: Yes No

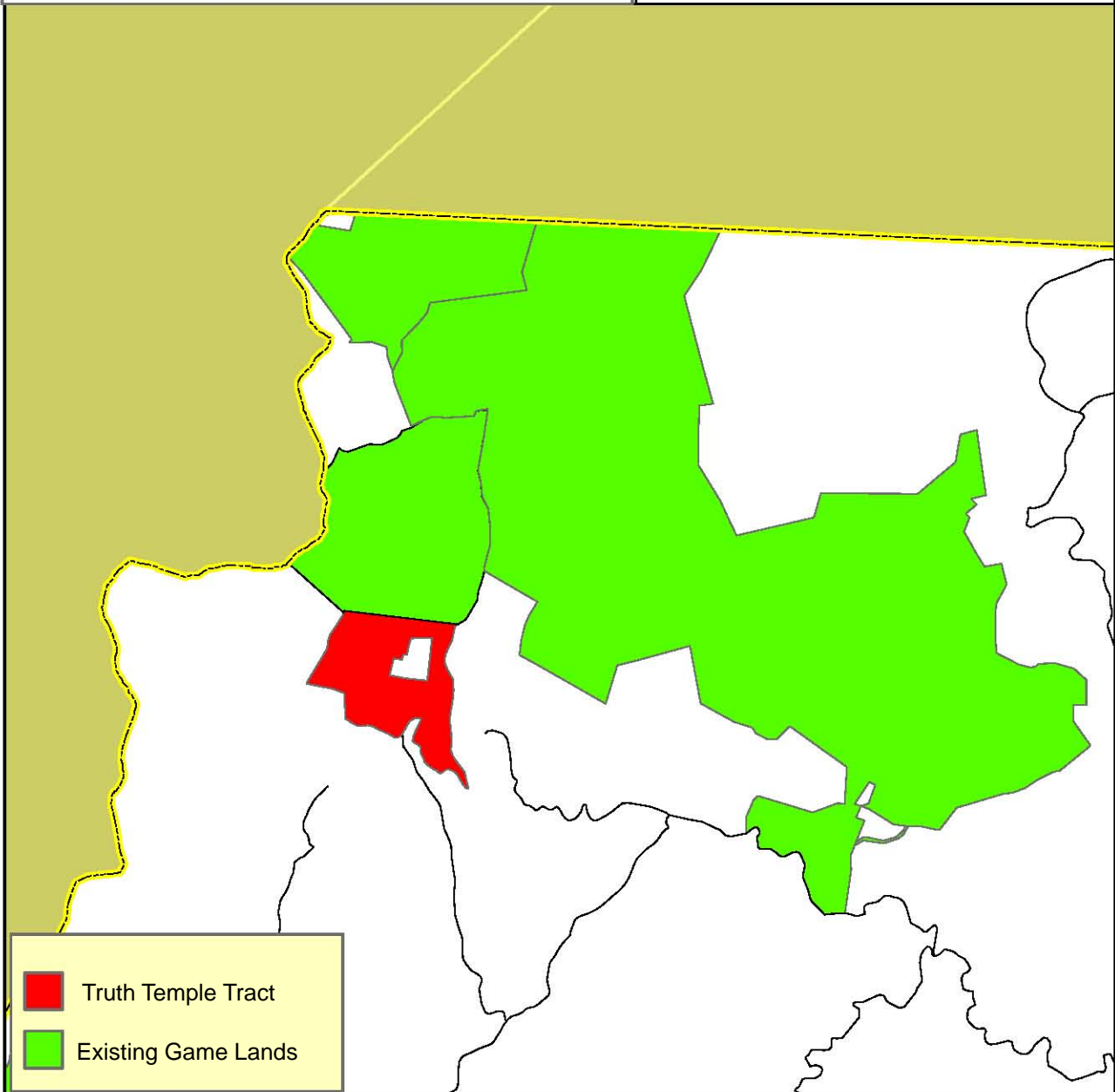
WORKSHEET



Relative Priority Evaluation for Conservation Lands

Tract Name (Focal Area) Truth Temple Tract

Criterion	Score (1-5) 5=Excellent 1=Poor
1. Augments existing protected lands by addressing an inholding or adjacent tract, provides key access, buffers or connects existing WRC-managed lands.	<u>5</u>
2. Represents good hunting, fishing, wildlife viewing, and other resource-based recreational opportunities.	<u>4</u>
3. No conflicting surrounding land uses.	<u>4</u>
4. Serves as a wildlife corridor between areas already protected for conservation purposes and provides connectivity to priority Wildlife Action Plan habitats.	<u>5</u>
5. Augments land conservation efforts on a landscape scale by providing nuclei (“anchors”) for regional conservation efforts, corridors, key linkages between conservation areas, or keystone tracts.	<u>5</u>
6. Fills a need identified by the Wildlife Action Plan, such as critical, rare or unique habitats; natural heritage elements; or significant aquatic/terrestrial resources.	<u>4</u>
7. Is this an area in which we would like to establish a new game land, wildlife conservation area, or fishing access?	<u>NA</u>
8. Is it large enough to be a new game land, and if not, are there possibilities for expansion (goal 3,000-5,000 acre minimum)?	<u>NA</u>
9. Is area adequate for fishing access development with suitable parking, and if not, are there possibilities for expansion?	<u>NA</u>
TOTAL SCORE	<u>27</u>

Truth Temple Tract Ashe County 128 Acres



-  Truth Temple Tract
-  Existing Game Lands

February 27, 2013

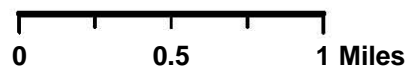


EXHIBIT E-2

March 14, 2013

North Carolina Wildlife Resources Commission Land Acquisition Investigation Form

-PHASE II: FINAL ACQUISITION DETAILS-

WRC Action/Approval to Pursue (Date): January 12, 2012

Tract: Louise Thomas Tract; Moore County, 255 Acres

Acquisition Plan (specify total project cost, each source, and amount of OBLIGATED funds):

*Natural Heritage Trust Fund (WRC) \$ 708,000
**Army Compatible Use Buffer Program (TNC) \$ 472,000
Total Cost: \$1,180,000

**NHTF funding secured by WRC*

***ACUB funding secured by The Nature Conservancy*

Based on Appraisal: Yes No NA

If Yes, Name of Appraiser:

Requested by:	Appraiser	Effective Date	Appraised Value
WRC	Frank Dean	2/11/2012	\$1,400,000.00
WRC	Jim Mason	2/4/2012	\$1,050,000.00
TNC	Jerry Daeke	6/14/2012	\$1,150,000.00

Date of Appraisal: See above.

Appraisal Handled by State Property Office: Yes No NA

Acquisition Plan Includes Bargain Sale: Yes No

If Yes, Explain Details:

Source(s) of Stewardship Funds (indicate federal:state match rates):

Pittman-Robertson Federal Assistance Grant (75% federal: 25% state)

Five Year Stewardship Costs & Revenue Projection Evaluation (attach worksheet)

Five Year Estimate of Total Stewardship Expenditures:	\$:	\$2,000
Five Year Estimate of Total Projected Revenue:	\$:	\$12,500

Additional Comments: NA

LOUISE THOMAS TRACT WORKSHEET
Five Year Stewardship Costs and Revenue Projections
(Five Years Post Acquisition)

STEWARDSHIP					
Estimated Stewardship Expenditures					
Tract Name	Activity	Quantity	Unit	Unit Cost	Total Cost
Louise Thomas Tract	Boundary Development (paint/sign)	1.5	mi.	\$200.00	\$300.00
	Install Gates	2	ea.	\$750.00	\$1,500.00
	Establish Fire Breaks	1	mi.	\$200.00	\$200.00
Total					\$2,000.00

REVENUE					
Estimated Revenue Projections					
Tract Name	Source	Quantity	Unit	Unit Revenue	Total Revenue
Louise Thomas Tract	Pine Thinning	25	ac.	\$500.00	\$ 12,500.00
Total					\$ 12,500.00

**North Carolina Wildlife Resources Commission
Land Acquisition Investigation Form**

-PHASE I: INITIAL INVESTIGATION-

Date: 12/11/2011

Tract Name: Louise Thomas

Acreage: 255+ acres

County: Moore

Advertised Purchase Amount: Unknown; estimate \$1,150,000 (~\$4,500/acre)

Based on Appraisal: Yes No

Contact: The Nature Conservancy/Louise Thomas, Winston-Salem, NC

Phone: TNC Ryan Elting 910-246-0300 (W)

Address: Louise Thomas, 735 Pine Valley Rd. Winston-Salem, NC 27106

Status: High Interest Moderate Interest Low Interest No Interest

Grant Potential: NHTF CWMTF DU MARSH

Other (explain) : Army Compatible Use Buffer (ACUB) Program; USFW Section 6

Resources Assessment (Brief): The tract has mature longleaf/wiregrass (slightly fire suppressed) on about 100 acres, open fields on about 70 ac, and longleaf plantation on about 80 ac. There is 2.43 miles of common boundary with Block Y of the Sandhills Game Land. This acquisition would greatly facilitate fire line maintenance and prescribed burning on Block Y. There are two inactive RCW clusters on adjacent game land within foraging range of the Thomas tract. One cluster is located along the shared boundary. The other is within 1000 feet of the Thomas Tract.

Access Assessment: Approximately 3,005 feet of frontage on SR 1004 (West End Road).

Game Lands Program Potential: Yes (Sandhills GL) No

Recommendation: Pursue Acquisition Defer Do not Pursue Acquisition

Map Attached: Yes No

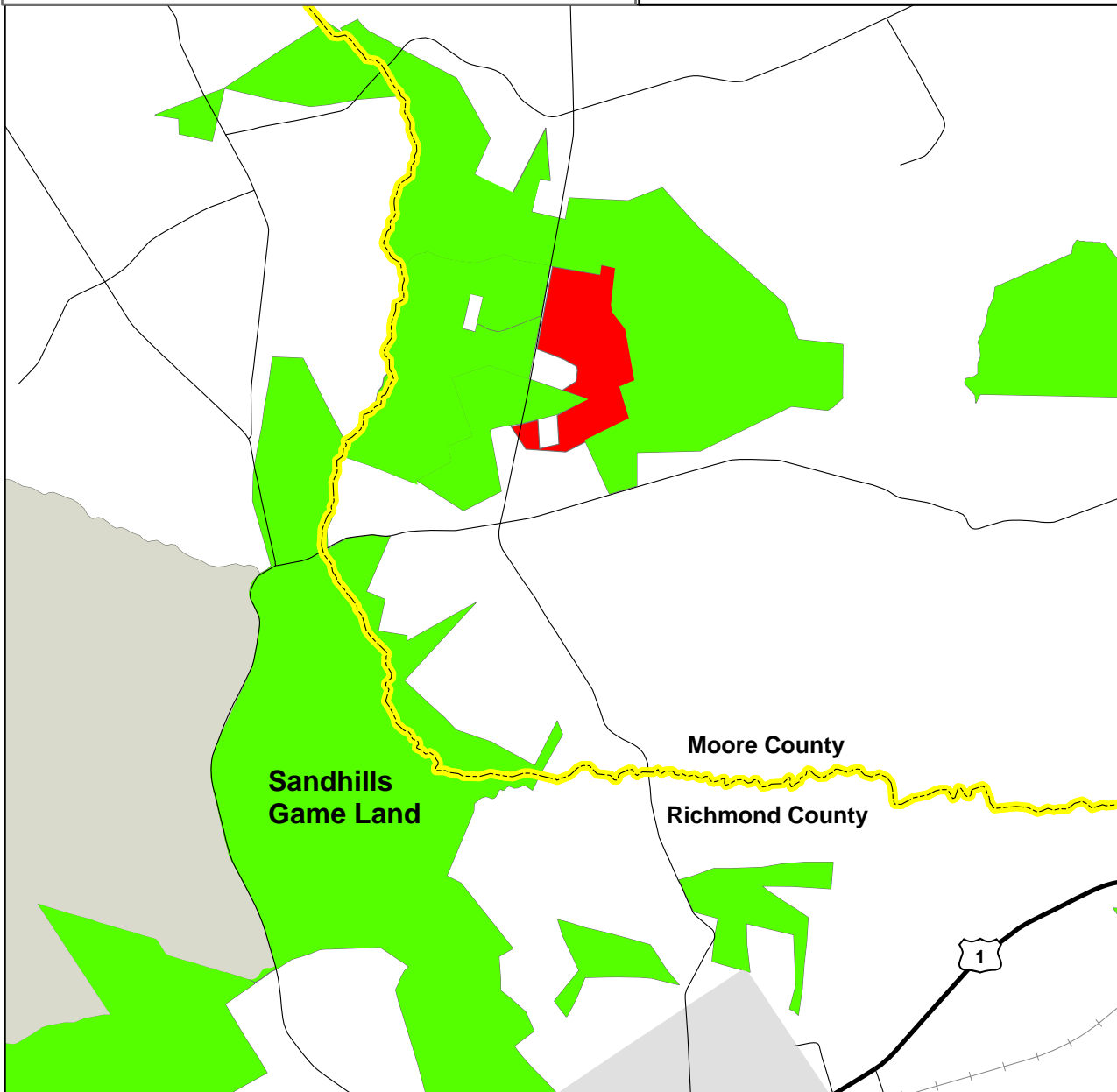
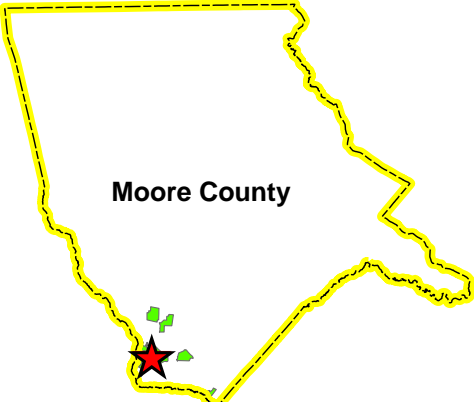
WORKSHEET

Relative Priority Evaluation for Conservation Lands

Tract Name (Sandhills Game Land) Louise Thomas Tract – Moore County

Criterion	Score (1-5) 5=Excellent 1=Poor
1. Augments existing protected lands by addressing an inholding or adjacent tract, provides key access, buffers or connects existing WRC-managed lands.	<u>5</u>
2. Represents good hunting, fishing, wildlife viewing, and other resource-based recreational opportunities.	<u>4</u>
3. No conflicting surrounding land uses.	<u>5</u>
4. Serves as a wildlife corridor between areas already protected for conservation purposes and provides connectivity to priority Wildlife Action Plan habitats.	<u>5</u>
5. Augments land conservation efforts on a landscape scale by providing nuclei (“anchors”) for regional conservation efforts, corridors, key linkages between conservation areas, or keystone tracts.	<u>4</u>
6. Fills a need identified by the Wildlife Action Plan, such as critical, rare or unique habitats; natural heritage elements; or significant aquatic/terrestrial resources.	<u>5</u>
7. Is this an area in which we would like to establish a new game land, wildlife conservation area, or fishing access?	<u>NA</u>
8. Is it large enough to be a new game land, and if not, are there possibilities for expansion (goal 3,000-5,000 acre minimum)?	<u>NA</u>
9. Is area adequate for fishing access development with suitable parking, and if not, are there possibilities for expansion?	<u>NA</u>
TOTAL SCORE	<u>28</u>

**Louise Thomas Tract
Sandhills Game Land
Moore County
255 Acres**



February 27, 2013

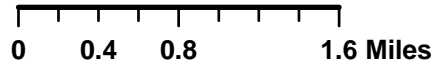


EXHIBIT F

March 14, 2013



North Carolina Wildlife Resources Commission

February 28, 2013

MEMORANDUM

TO: Erik Christofferson, Chief
Division of Engineering and Lands Management

FROM: Isaac Harrold, Program Manager
Lands Management Section

SUBJECT: Reallocation of Properties to Clarify Boundary Location
South Mountains Game Land and South Mountains State Park
Burke, Cleveland, and Rutherford Counties

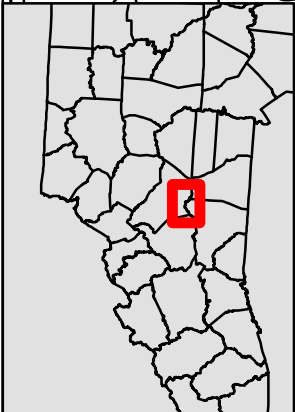
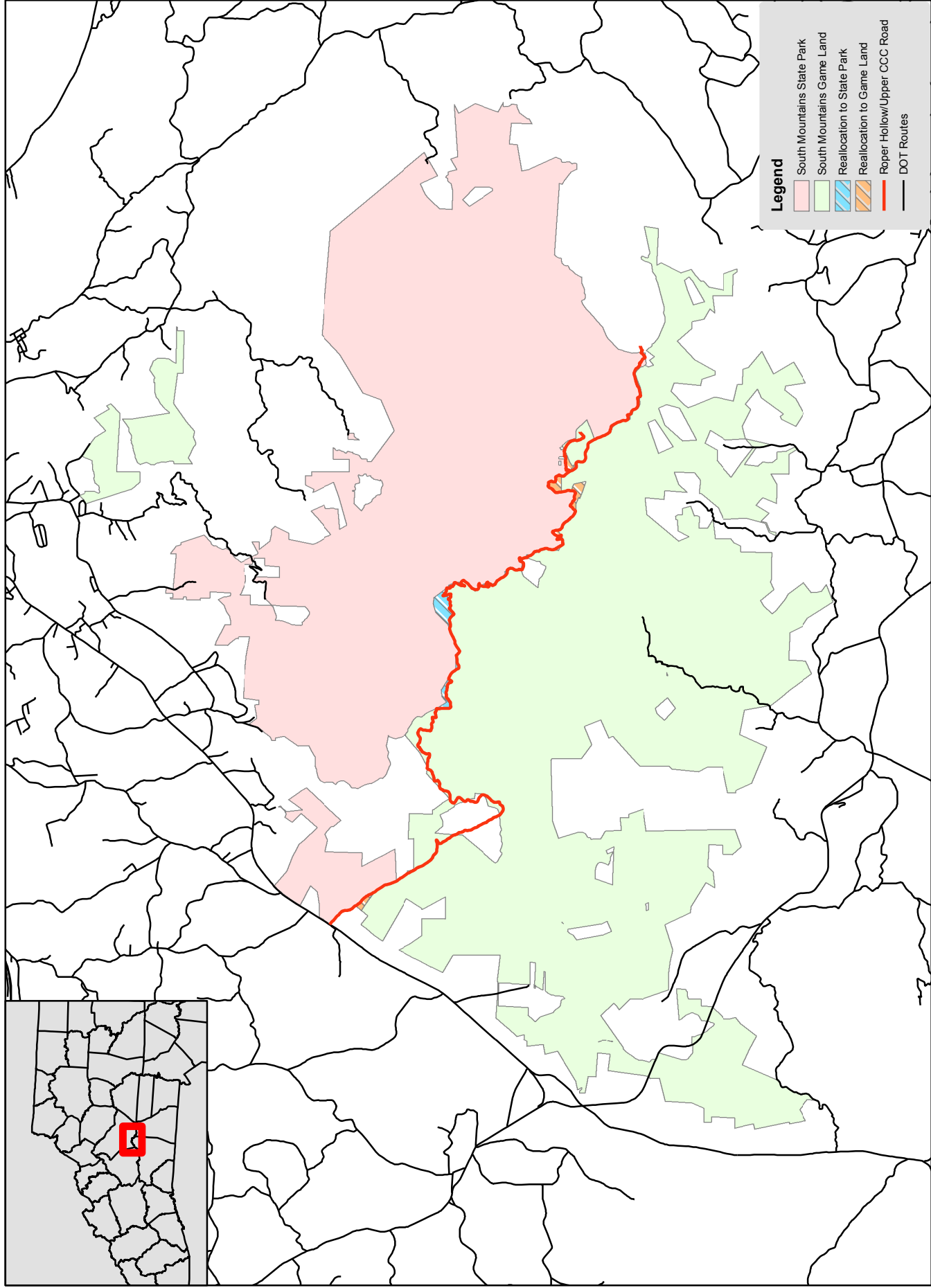
The northern boundary of South Mountains Game Land and the southern boundary of South Mountains State Park runs along or near the Upper CCC Road for a distance of approximately 9.5 miles. Unfortunately, this common boundary meanders back and forth along the ridge line and crosses the access road some 20 times. This makes it extremely difficult for game land and park users to determine which property they are on at any given time.

Personnel from the Division of Parks and Recreation (DPR) and the Wildlife Resources Commission (WRC) met on January 23, 2013 to discuss and agreed to a proposal that generally realigns the boundary to the Upper CCC Road. The exceptions are a single parcel north of the road that WRC will retain near Rich Mountain, and one parcel south of the road that DPR will retain near Ben Knob. Otherwise, the road will represent the boundary under this proposal.

Reallocation will involve approx. 85 acres to DPR and 81 acres to WRC. DPR has begun the process of obtaining the necessary approvals to proceed and our staff recommends that we do the same. I concur and recommend WRC approval to work with the State Property Office to proceed with the proposed reallocation.

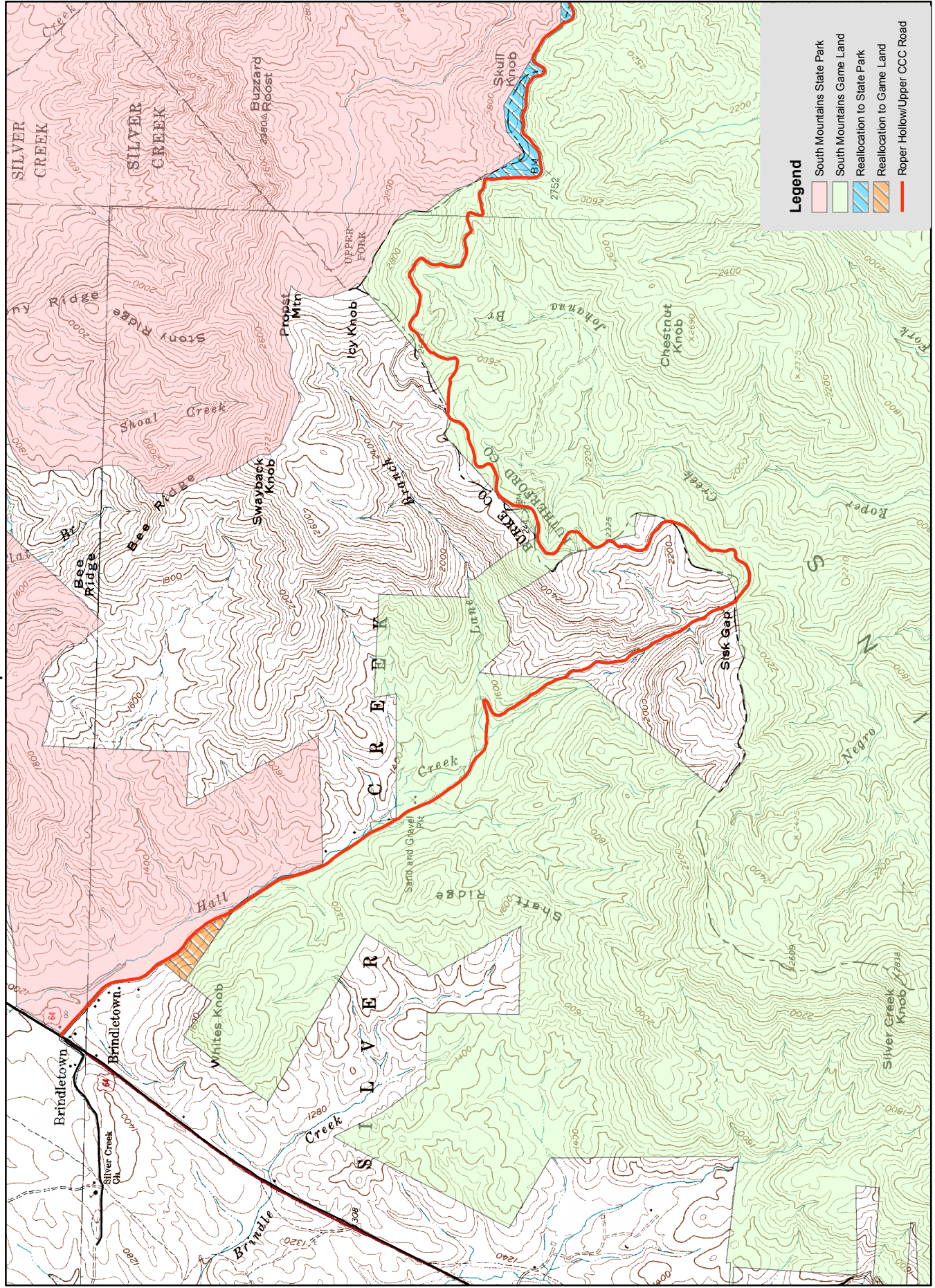
Division of Engineering and Lands Management
Mailing Address: 1720 Mail Service Center, Raleigh, N.C. 27699-1720
Physical Address: 1751 Varsity Drive, Raleigh, N.C. 27606
Phone: 919-707-0150 Fax: 919-707-0162

Potential Property Reallocation, South Mtns. Game Land - South Mtns. State Park

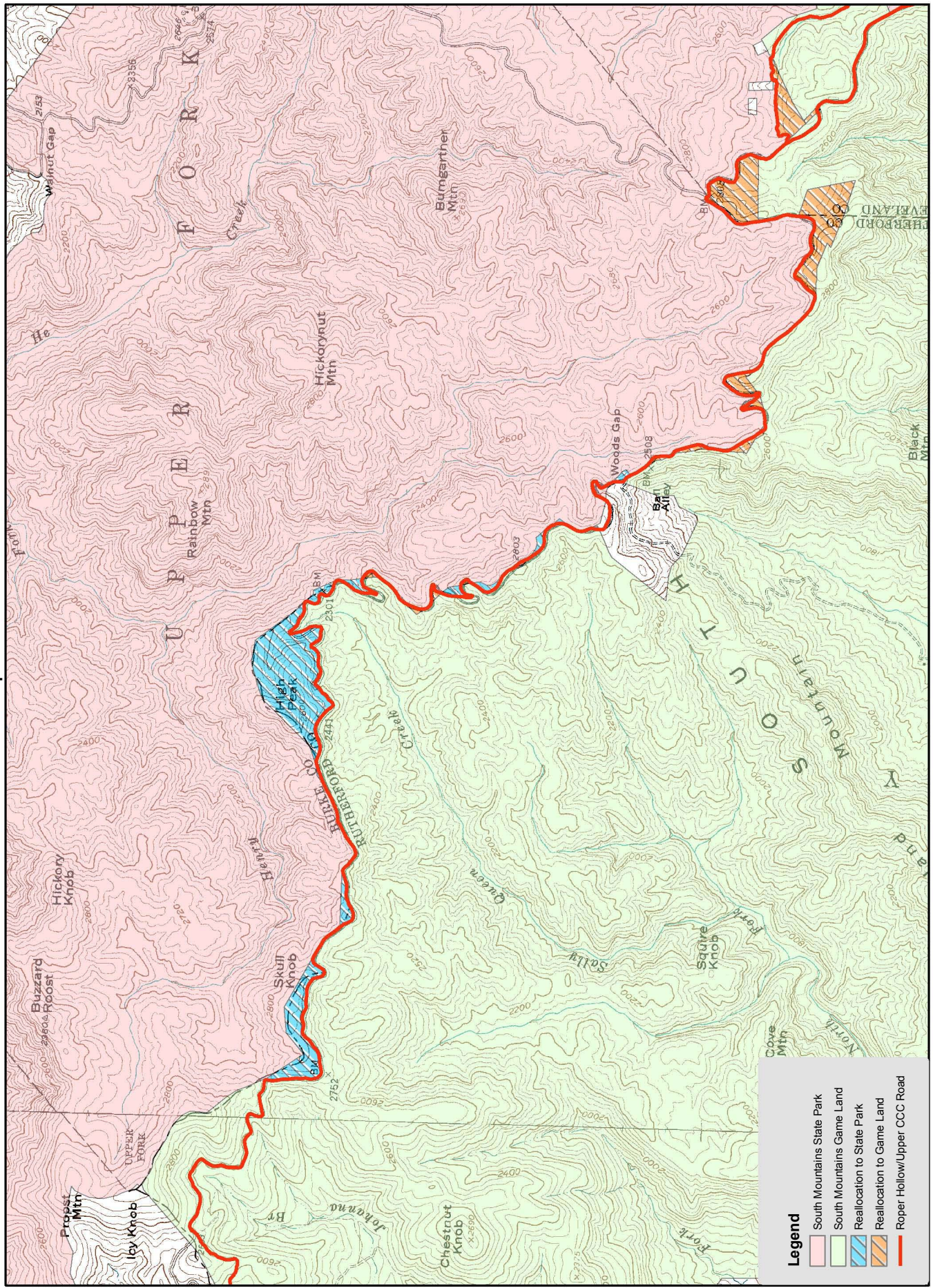


Potential Property Reallocation, South Mtns. Game Land - South Mtns. State Park

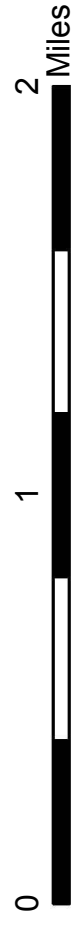
Map Detail 1



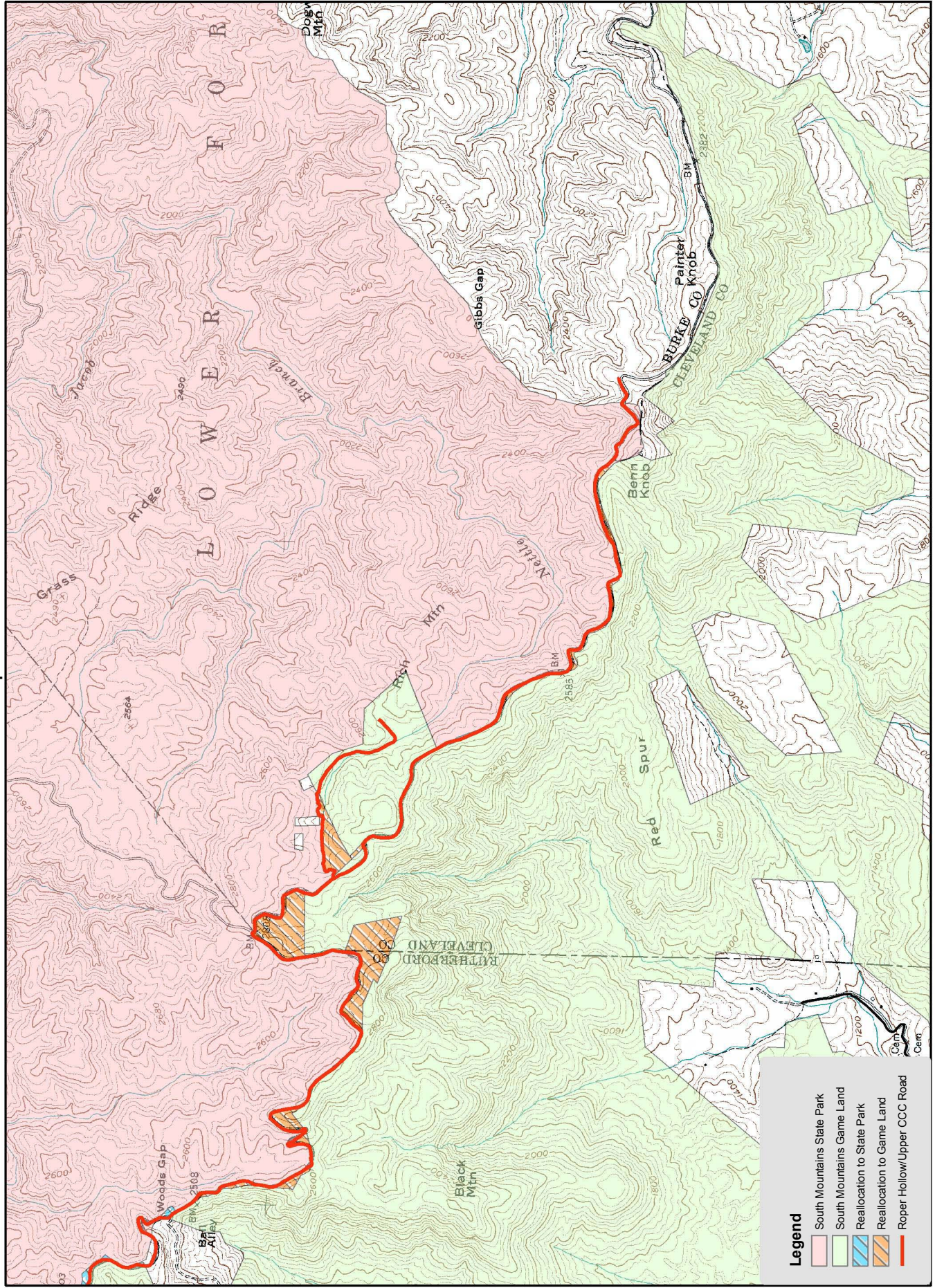
Potential Property Reallocation, South Mtns. Game Land - South Mtns. State Park Map Detail 2



- Legend**
- South Mountains State Park
 - South Mountains Game Land
 - Reallocation to State Park
 - Reallocation to Game Land
 - Roper Hollow/Upper CCC Road



Potential Property Reallocation, South Mtns. Game Land - South Mtns. State Park Map Detail 3



Legend

- South Mountains State Park
- South Mountains Game Land
- Reallocation to State Park
- Reallocation to Game Land
- Roper Hollow/Upper CCC Road

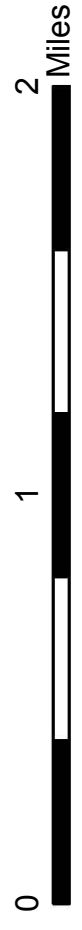


EXHIBIT G

March 14, 2013



⊠ North Carolina Wildlife Resources Commission ⊠

February 28, 2013

MEMORANDUM

TO: Erik Christofferson, Chief
Division of Engineering and Lands Management

FROM: Isaac Harrold, Program Manager
Lands Management Section

SUBJECT: Dominion Power Request for Additional Transmission Line Easement
North River Game Land; Currituck County

Dominion North Carolina Power has requested a 2.21 acre addition to an existing power transmission line easement involving two locations on North River Game Land in Currituck County. The new 60-foot wide easement will be parallel and adjacent to an existing 120-foot easement and is needed to facilitate development of a 230kV transmission line that will start in Shawboro, NC and connect with the existing line Aydlett, NC.

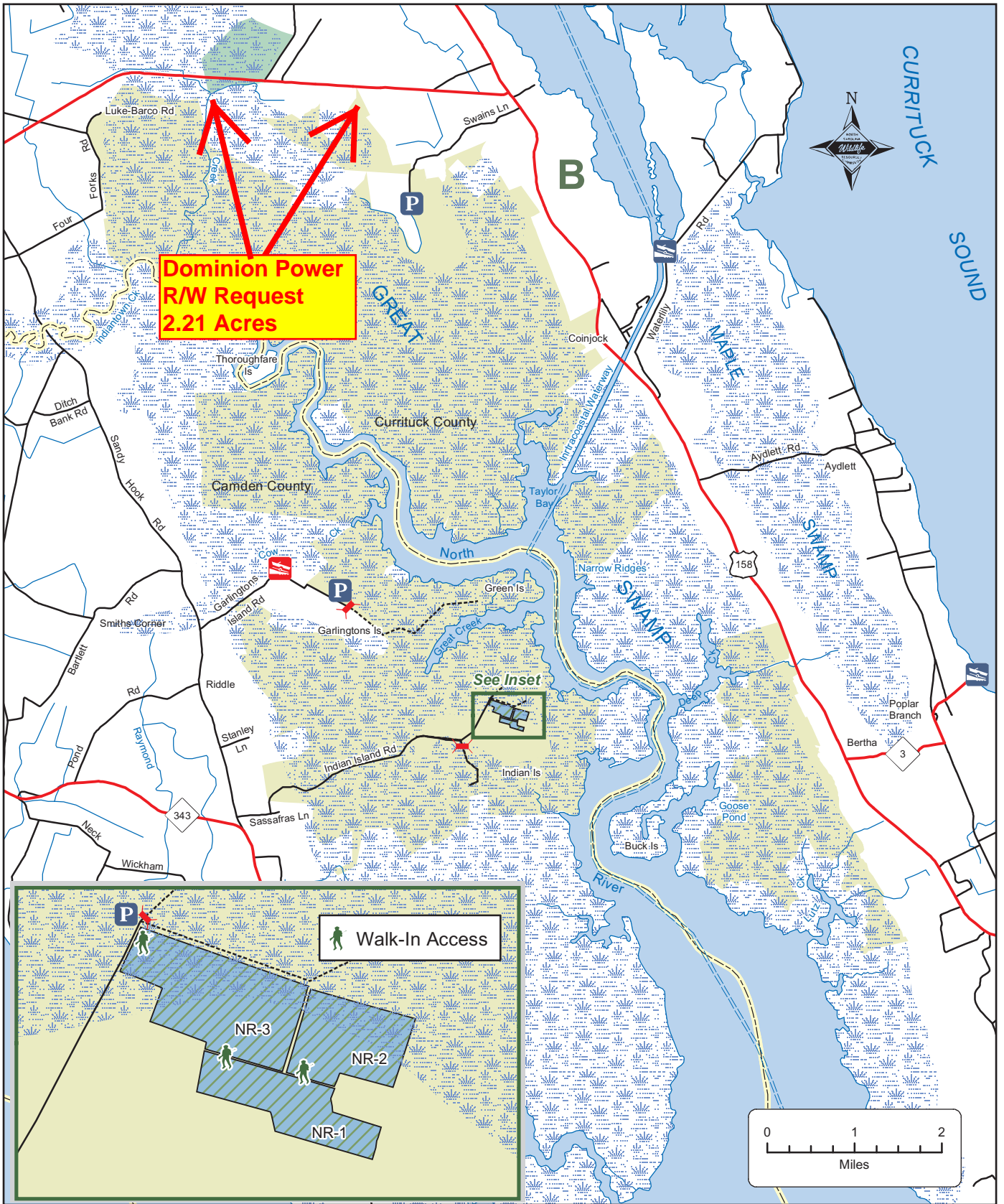
A general location map and a satellite photo of the subject property are attached.

Dominion has offered \$2,500 compensation for the value of the easement. Pending concurrence from State Property Office, staff finds this to be a reasonable offer. Staff has identified no significant negative impacts to habitat, future game land management, or public use and recommends approval. I concur and recommend that we seek WRC approval to grant the additional easement.

Division of Engineering and Lands Management
Mailing Address: 1720 Mail Service Center, Raleigh, N.C. 27699-1720
Physical Address: 1751 Varsity Drive, Raleigh, N.C. 27606
Phone: 919-707-0150 Fax: 919-707-0162

NORTH RIVER GAME LAND (continued)

N.C. Wildlife Resources Commission,
Camden and Currituck Counties



Dominion Power Easement Request - North River Game Land - Currituck County

New Easement 1.96 Ac

**Existing
Easement
Alignment**

New Easement

© 2013 Google
Image U.S. Geological Survey

36°23'10.88" N 76°01'29.27" W elev 3 ft

Google earth

Eye alt 12785 ft

1993

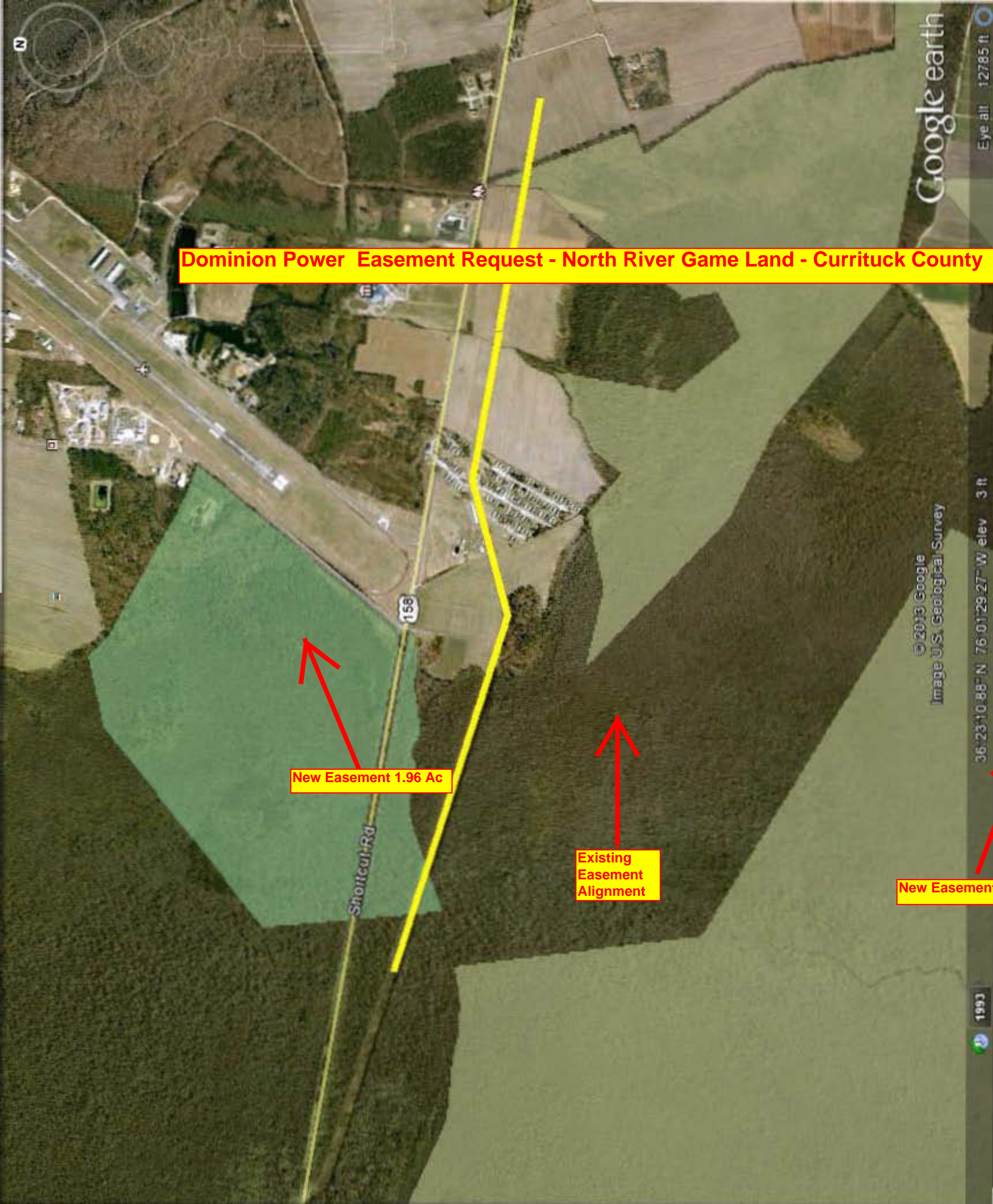


EXHIBIT H

March 14, 2013

THE STATE OF NORTH CAROLINA SHALL NOT BE RESPONSIBLE FOR ANY EXPENSES INCURRED BY THE PROPOSER IN THE PREPARATION OF THIS PROPOSAL. THE STATE RESERVES THE RIGHT TO REJECT ANY PROPOSAL FOR ANY REASON IT DEEMS WARRANTED. FAXED OR E-MAILED PROPOSALS ARE NOT ACCEPTABLE.

PROPOSAL TO LEASE TO THE STATE OF NORTH CAROLINA - PO-28

1. NAME OF LESSOR: Edward B. Wittkefsky, Sr. 2. LESSOR'S AGENT: MONROE ENZO

INDICATE EACH LESSOR'S BUSINESS CLASSIFICATION AS APPLICABLE: A. PROPRIETORSHIP
 B. PARTNERSHIP C. CORPORATION D. GOVERNMENTAL E. NON-PROFIT F. *** (HUB)
 HISTORICALLY UNDERUTILIZED BUSINESSES G. OTHER: _____ TAX I.D. # _____

MAILING ADDRESS: 110 JAMES ST. MAILING ADDRESS _____
 CITY: BELIVIA ZIP: 28422 CITY: _____ ZIP: _____
 PHONE#: _____ FAX#: _____ PHONE#: 367-7002 FAX#: _____
 E-MAIL: _____ E-MAIL: MUNOS@ATMC.NET

3. SPACE LOCATION: (Including building name, floors involved & suite or room numbers unless entire floor)

STREET ADDRESS 38 MERCER ST. CITY BELIVIA, NC COUNTY _____ ZIP CODE _____

4. ATTACH FLOOR PLAN TO SCALE SHOWING THE SIZE AND LAYOUT OF SPACE OFFERED)

5. GROSS SQUARE FOOTAGE BEFORE NET USAGE COMPUTED

	A. OFFICE	B. WAREHOUSE <u>50' x 80'</u>	C. OTHER
--	-----------	-------------------------------	----------

6. All proposals must be submitted on the basis of net square footage as defined on reverse side of this sheet and in Specifications (PO-27)

A. DESIRED PROPOSAL (See PO-27 Items VI and XII-A)

TYPE OF SPACE	TOTAL NET SQ. FT.	ANNUAL RENTAL	ANNUAL RENT PER SQ. FT.	UTILITIES	JANITOR. SERVICES	WATER / SEWER	REQUIRED PARKING SPACES
OFFICE				YES	YES	YES	12-clientele
WAREHOUSE	<u>4000</u>	<u>15600</u>	<u>3.90</u>	<u>NO</u>	<u>NO</u>	<u>7' x 30"</u>	
OTHER							
TOTALS			XXXX	XXXX			XXXX

Lessor will provide () employee parking spaces in above proposal at no additional charge to the State. (See explanation in PO-27 Item VI - Parking)

Comments:

ERRORS BY PROPOSERS IN CALCULATING NET SQUARE FOOTAGE WILL REDUCE THE ANNUAL RENTAL WITHOUT CHANGING THE PROPOSED RATE PER SQUARE FOOT IN THE PROPOSAL

B. OPTIONAL ALTERNATE PROPOSAL NO. 1 (See PO-27 ITEMS VI AND XII-B)

(FOR PROPOSALS NOT INCLUDING UTILITIES AND/OR JANITORIAL SERVICES)

TYPE OF SPACE	TOTAL NET SQ. FT.	ANNUAL RENTAL	ANNUAL RENT PER SQ. FT.	UTILITIES YES/NO	JANITORIAL SERVICES YES/NO	WATER/SEWER YES/NO
OFFICE						
WAREHOUSE						
OTHER						
TOTALS			XXXX	XXXX	XXXX	

Lessor will provide () clientele parking spaces and () employee parking spaces

Comments:

7. LEASE TERM: 1yr YEARS BEGINNING DATE: MARCH 1, 2013

8. RENEWAL OPTIONS, IF ANY: TERMS AND CONDITIONS: 1yr option AT \$16,800

LESSOR:		
9. ADDITIONAL INFORMATION <u>Site includes 0.48 Acres</u> <u>with Paved Yard</u>		
10. Does this space comply with local and State Building safety and zoning codes specifically including OSHA provisions for the handicapped and applicable sections of the State Building Code Volumes I-V?		
YES	NO	PARTIALLY
EXPLAIN IF OTHER THAN "YES" IS CHECKED ABOVE:		
11. This proposal is made in compliance with the specifications furnished by _____ I realize that the State reserves the right to reject this proposal for any reason it deems warranted. This proposal is good until _____. I ACKNOWLEDGE AND FURTHER AFFIRM THAT I am aware of and familiar with the Americans with Disabilities Act of 1990 (42 United States Code, Section 12101 et seq.) and if the above firm is awarded the contract, it will comply with the provisions of said Act.		
I am aware that annual per square foot rental rate(s) which include indeterminable percentage increase(s) such as uncapped Consumer Price Index increases etc., are not acceptable during either the initial term or any renewal period(s):		
*** <i>(HUB) HISTORICALLY UNDERUTILIZED BUSINESSES (HUB) CONSIST OF MINORITY, WOMEN AND DISABLED BUSINESS FIRMS THAT ARE AT LEAST FIFTY-ONE PERCENT OWNED AND OPERATED BY AN INDIVIDUAL(S) OF THE AFOREMENTIONED CATEGORIES. ALSO INCLUDED IN THIS CATEGORY ARE DISABLED BUSINESS ENTERPRISES AND NON-PROFIT WORK CENTERS FOR THE BLIND AND SEVERELY DISABLED.</i>		
N.C.G.S. § 133-32 and Executive Order 24 prohibit the offer to, or acceptance by, any State Employee of any gift from anyone with a contract with the State, or from any person seeking to do business with the State. By execution of this proposal, you attest, for your entire organization and its employees or agents, that you are not aware that any such gift has been offered, accepted, or promised by any employees of your organization.		
<u>Edward B. Wittkofsky, Jr.</u> Printed Name of Lessor		
Signature of Lessor		Date
MAILING /DELIVERY INSTRUCTIONS		
To be considered this proposal must be received by the State Property Office prior to 4:00 PM on the cutoff. No faxed or e-mailed proposals will be accepted. PHONE: 919-807-4650 Delivery Address If Delivered In Person: Director, State Property Office, Room 4055, Administration Building, 116 West Jones Street, Raleigh, North Carolina Mailing Address If Sent Through Mail Service: State Property Office, 1321 Mail Service Center, Raleigh, North Carolina 27699-1321		
ENVELOPE SHOULD BE MARKED:		
<ul style="list-style-type: none"> (a) Lease proposal Enclosed (b) Cutoff Date for Receiving Proposals (c) Name of State Agency involved. 		
NOTE: Net square footage is a term meaning the area to be leased for occupancy by State Personnel and/or equipment. To determine net square footage:		
<ol style="list-style-type: none"> 1. Compute the inside area of the space by measuring from the normal inside finish of exterior walls or the roomside finish of fixed corridor and shaft walls, or the center of tenant separating partitions. 2. Deduct from the Inside area the following: <ul style="list-style-type: none"> *a. Toilets and lounges *b. Entrance and elevator lobbies *c. Corridors d. Stairwells e. Elevators and escalator shafts f. Building equipment and service areas g. Stacks, shafts, and interior columns h. Other space not usable for State purposes 		
*Deduct if space is not for exclusive use by the State. Multiple State leases require a, b, and c to be deducted. The State Property Office may make adjustments for areas deemed excessive for State use.		
DEPARTMENT: TRANSPORTATION	DIVISION: HIGHWAYS	
CITY: RALEIGH	SQUARE FEET: 4,146	AGENT: ANGELA BLINSON
CUT-OFF FOR RECEIVING PROPOSALS IS 4:00 PM		DATE: JANUARY 8, 2013

X

NOTE: RATES THAT INCLUDE INDETERMINABLE PERCENTAGE INCREASES, SUCH AS UNCAPPED CPI INCREASES ETC., ARE NOT ACCEPTABLE DURING EITHER THE INITIAL TERM OR ANY RENEWAL PERIOD(S)

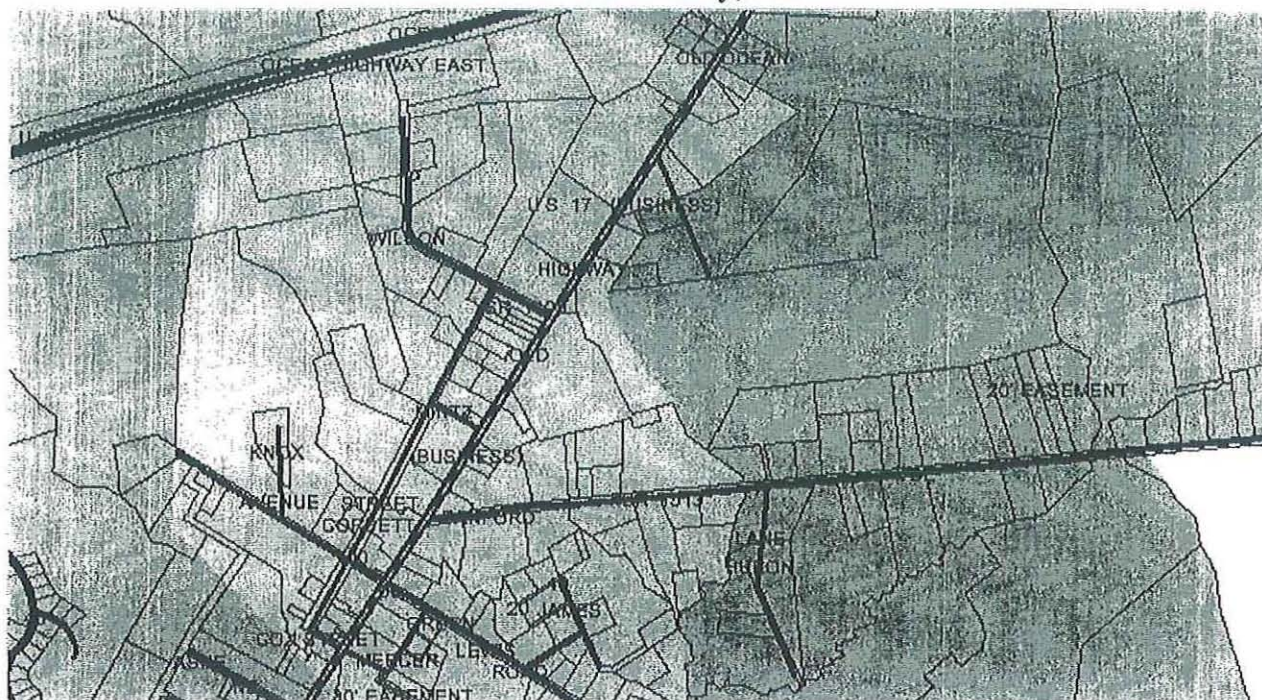
The State of North Carolina supports the use of products and materials having recycled content in renovation and construction. The proposed building must have facilities for handling materials to be recycled such as plastics, aluminum, waste paper and cardboard.

THE PROPOSED BUILDING MUST BE COMPLETELY FREE OF ANY HAZARDOUS ASBESTOS OR HAZARDOUS LEAD PAINT THROUGHOUT THE STATE'S TENANCY.

Is the proposed building free of hazardous asbestos?	YES <input checked="" type="checkbox"/>	NO <input type="checkbox"/>
Is the proposed building free of hazardous lead paint?	YES <input checked="" type="checkbox"/>	NO <input type="checkbox"/>

DEPARTMENT: TRANSPORTATION	DIVISION: HIGHWAYS
CITY: RALEIGH	SQUARE FEET: 410 AGENT: ANGELA BLINSON
CUT-OFF FOR RECEIVING PROPOSALS IS 4:00 PM DATE: JANUARY 6, 2022	

Brunswick County, NC



Parcel Number	140AB003	Plat Date	
Account Number		Land Value	\$10,560
PIN	215112759718	Building Value	\$51,420
Owner	WITTKOFSKY EDWARD B JR	Other Value	\$3,474
Owner Address 1		Deferred Value	\$0
Owner Address 2	110 JAMES STREET	Total Taxable Value	\$65,454
City	BOLIVIA	Heated Sq Ft	
State	NC	Year Built	
Zip	28422	Bedrooms	
Legal Description	L-5-7 B-11 JR COX ADD. PLAT 1508/1342	Full Baths	
Parcel Street Number	38	Stories	
Parcel Street	MERCER	Ext. Wall 1	
Street Type	ST	Ext. Wall 2	
Street Dir		Neighborhood	
Subdivision		Municipality	Bolivia
Deed Book	3232	Fire Tax District	Bolivia
Deed Page	0900	Township	TOWN CREEK
Deed Date	1/24/2012	Acreage	0.48
Plat Book		Sale Price	
Plat Page			

Disclaimer: Map and parcel data are believed to be accurate, but accuracy is not guaranteed. This is not a legal document and should not be substituted for a title search, appraisal, survey, or for zoning verification.

Map Scale
1 inch = 1295 feet

LEASED PROPERTY FIRE AND LIFE SAFETY CHECKLIST

DATE: 1/29/13

STATE AGENCY: Wildlife Resources

EVALUATION BY: Jason Sellars

MAIL ADDRESS: 1720 misc Raleigh NC

PHONE # / FAX #: 919-707-0153

BUILDING CHECKED: 1/29/13

STREET ADDRESS: 38 Mercer Street, Bolivia

CITY, STATE, ZIP: Brunswick County

OWNER'S REP: MONROE ENZOR

PHONE # / FAX #: 910 367 7002

TYPE OF LEASE:

RENEWAL

PROPOSED

RESULTS and COMMENTS: _____

This checklist is intended to be used by the State Property Office and by agency property management personnel in evaluating space to lease. **It should be completed far enough in advance of the lease renewal or potential new lease to permit effective negotiations for building safety improvements.** This list is not all-inclusive and a building which looks good may still have conditions detrimental to life safety, or loss prevention. Conversely, buildings with one or more deficiencies are not automatically disqualified from consideration but "NO" answers at least raise some questions or caution flags about the property. The final decision on all leases is up to the State Property Office and agency management. NOTE: Local building code officials have jurisdiction over property that is not owned by the State.

YES NO

EXITS, EXIT ACCESS, AND SEPARATION

 1. Does building have at least two exits that are remote (1/2 the diagonal of the space served for an unsprinklered building, 1/3 the diagonal for sprinklered) from each other?
 If NO, answer Item (2). If YES, skip to Item (3)

 2. Answer (2) **ONLY** if Item (1) was NO:
 Is the building two stories or less, have 30 occupants or less, and travel distance to a Code compliant exit 50 feet or less from any point in the building? **OR**, is the building 1 story with less than 50 occupants and travel distance of 75 feet or less to an exit from any point in the building? (Note that conference rooms and waiting rooms are calculated at 1 person per 15sf instead of 1 person per 100sf as used for office spaces).
 If NO, see Note (A).

 3. Is travel distance to exit or to an enclosed exit stair less than 200 ft (250 ft if sprinklered) from the most remote point on a floor, and are all dead ends in exit access corridors less than 20 ft (50 feet if sprinklered of pre-1991 building)?
 If NO, a Code deficiency may exist. See Note (A) and (B)

 4. Are all the exit stairs fully enclosed with at least one-hour fire rated construction and 1 hour or 1 1/2 hour "B"-labeled doors having closers and latching hardware? (The label is found on door edge, hinge side or top.)
 If NO, a Code deficiency exists.

YES NO

EXITS, EXIT ACCESS, AND SEPARATION

5. Are all vision panels in stair doors wired glass in steel frames, not exceeding 100 square inches? (Any other type of vision panel, side light, or window between a stair and the interior of a building is prohibited by Code.)

If **NO**, a Code deficiency exists.

6. Do all exit stairs terminate outside the building, with direct access to a public space, and do not require re-entering the building?

If **NO**, answer Item (7). If **YES**, skip to Item (8).

7. Answer (7) **ONLY** if Item (6) was **NO**:

If upstairs occupants must re-enter the building from the stair enclosure at the exit level, is this area or vestibule separated from the remainder of the exit level floor by at least one-hour fire rated construction?

If **NO**, see Note (A) and (B).

NA

8. Are tenant spaces separated by one-hour fire rated construction? (This typically means at least gypsum board walls on steel studs, extending tight to the floor or roof deck.)

If **NO**, a deficiency exists.

9. Does the building have a complete sprinkler system?

If **NO**, see Note (B).

NOTE: (A): The exit system may be deficient. The building will have to be evaluated by a building code professional.
(B): A sprinkler system, if present in the building, may offer some relief from this deficiency. Check with a building code professional.

YES NO

FIRE PROTECTION AND EMERGENCY EQUIPMENT

- 10. Does the building have an automatic fire detection system and manual pull-stations at exit doors, with alarms transmitted off-premises?

If NO, see Note (B).

- 11. Are fire extinguishers rated at least 2A on every level and within 75 feet?

To be installed

If NO, a Code deficiency exists.

- 12. Do fire extinguishers have tags indicating they have been inspected annually and given a visual check monthly?

If NO, a Code deficiency exists.

- 13. Is emergency egress lighting having a separate and independent source of power (battery or generator) provided?

If NO, a Code deficiency may exist.

- 14. Where the location of or the direction to exits from any room or space is not obvious, are exit signs and directional exit signs provided?

If NO, a Code deficiency exists.

- 15. Is the building accessible to the handicapped, including parking spaces?

If NO, a Code deficiency and/or non-compliance with ADA exists.

YES NO

GENERAL ITEMS AND ACCESSIBILITY

16. Does the building have sufficient, accessible restroom facilities? (Separate for male and female if >2,500sf and if this is a post 1991 new or renovated building.) If renovations are occurring or will occur, are there individual toilet rooms or stalls that are at least 5' x 5'?

If NO, a Code deficiency and/or non-compliance with ADA exists.

17. Are corridors maintained clear and unobstructed at all times, to provide for safe egress in an emergency?

If NO, a Code deficiency exists.

18. Are all of the electrical panelboards provided with at least three feet clearance, for maintenance purposes and to allow rapid access to the disconnects in an emergency?

If NO, a Code deficiency exists.

19. Are electrical and mechanical equipment rooms kept relatively clear and free of combustible material?

If NO, a Code deficiency exists.

20. Is building security acceptable to your agency? This includes street lighting, parking arrangements, the surrounding environment, and how well the building is secured against unauthorized entry. You may want to question previous tenants about any crime problems.

March 14, 2013



ROY COOPER
ATTORNEY GENERAL

State of North Carolina
Department of Justice
9001 Mail Service Center
RALEIGH, NORTH CAROLINA
27699-9001

REPLY TO:
C. NORMAN YOUNG, JR.
SERVICE TO STATE AGENCIES
PHONE: 919-716-6800
FAX: 919-716-6755
E-MAIL: NYOUNG@NCDOJ.GOV

January 28, 2013

Fiscal Note Review of
Proposed Wildlife Resources Commission (WRC) "No-Wake Zone" Rule
(15A NCAC 10F .0355)

Contact: Norman Young
Counsel and Rulemaking Coordinator
North Carolina Wildlife Resources Commission

Impact: State government: No
Local government: Yes
Substantial impact: No

Authority: G.S. §§ 75A-3; 75A-15

This proposed rule amendment (see text in Appendix 1) would redefine and slightly modify a currently existing no-wake zone on the Perquimans River in Perquimans County. Specifically, under (a)(1) of this rule, Perquimans River, (B) and (C) are proposed to be stricken. In their place, a new (B) would add the Town of Hertford. This will create a slightly larger no wake zone that combines the areas in (B) and (C) and extends the no wake area to a line shore to shore approximately 475 yards southwest of the bridge. (See Appendix 2.) This is proposed at the request of the county.

The changes to (a)(2) and (a)(3) are technical and move the descriptions of the two no wake zones near the Albemarle Plantation Marina Piers - (a)(2)A) - and within the area of Beaver Cove - (a)(2)(B) - from Yeopim River to Yeopim Creek where they are more properly described as being located. WRC has verified that both locations do belong in Yeopim Creek rather than in Yeopim River and should have initially been codified there. Regardless, these proposed changes would not modify these two existing no-wake zones in any way.

For reasons which will be outlined below, WRC believes that this rule change does not meet the criteria requiring a fiscal note pursuant to G.S. § 150B-21.4, but is submitting a fiscal note for review as required by OSBM.

STATE IMPACT ANALYSIS: The agency has concluded that there will be no cost to the State for the following reasons:

* This rule is intended to accomplish the agency's mandate to provide for the safety of boaters and other members of the public, and is part of a regulatory program enforced by WRC's Division of Enforcement. The proposed change will not affect staffing or costs to WRC for enforcement as this is already an active patrol area and the change will not result in either an increased or decreased Enforcement presence.

* Perquimans County has requested the modification of this no-wake zone subsequent to a local public hearing conducted by the County,

* A relocation of one existing marker at a cost of approximately \$400.00 is all that will be required to properly mark the changed no-wake zone.

* WRC has surveyed the site and has concluded that there is a continuing need for this no-wake zone for boater safety, and that the proposed technical changes will more accurately define the limits of existing no-wake zones in the legal description.

LOCAL IMPACT ANALYSIS: The Town of Hertford will relocate a single marker using existing staff at a cost of approximately \$400 as determined by the Town.

SUBSTANTIAL ECONOMIC IMPACT ANALYSIS: WRC has concluded that there will be no substantial economic impact to the public as a result of the adoption of this proposal since the changes in the scope of this no-wake zone are minor and should create no appreciable economic impact to the public. This repeal will not result in any measurable economic loss or gain to the public. Accordingly WRC has determined that the economic impact to the public is minimal to none.

15A NCAC 10F .0355 is proposed for amendment as follows:

15A NCAC 10F .0355 PERQUIMANS COUNTY

(a) Regulated Areas. This Rule applies to the following waters:

- (1) Perquimans River:
 - (A) The canals of Holiday Island subdivision;
 - ~~(B) The area within 50 yards of the Hertford City Boat Ramp; and~~
 - ~~(C) The area within 75 yards of the Perquimans River Bridge on U.S. 17 Business also known as the Hertford S Shaped Bridge.~~
 - (B) Town of Hertford: that part of the Perquimans River beginning 75 yards northeast of the Perquimans River Bridge (Hertford S-shaped Bridge) parallel to the bridge, shore to shore, and ending approximately 550 yards southwest, at a line from a point on the north shore 36.19300 N, 76.46962 W to a point on the south shore 36.19150 N, 76.47099 W.

- (2) Yeopim River:
 - ~~(A) The area within 75 yards of the Albemarle Plantation Marina Piers;~~
 - ~~(B) The area of Beaver Cove as delineated by appropriate markers;~~
 - ~~(C) (A) The canal entrance between Navaho Trail and Cherokee Trail;~~
 - ~~(D) (B) The canal entrance between Cherokee Trail and Ashe Street;~~
 - ~~(E) (C) The boat ramp at Ashe and Pine Street;~~
 - ~~(F) (D) The canal entrance between Pine Street and Linden Street;~~
 - ~~(G) (E) The canal entrance and boat ramp between Willow Street and Evergreen Drive;~~
 - ~~(H) (F) The canal entrance between Sago Street and Alder Street; and~~
 - ~~(I) (G) The swimming area at the Snug Harbor Park and Beach.~~

- (3) ~~Yeopim Creek-Creek:~~
 - (A) The canal entrance between Mohave Trail and Iowa Trail; ~~and~~
 - (B) The canal entrance between Iowa Trail and Shawnee ~~Trail-Trail;~~
 - (C) The area within 75 yards of the Albemarle Plantation Marina Piers; and
 - (D) The area of Beaver Cove as delineated by appropriate markers.

- (4) Little River: The entrance to the cove known as "Muddy Gut Canal," which extends from the waters known as "Deep Creek."

(b) Speed Limit. No person shall operate any motorboat or vessel at greater than no-wake speed within the regulated area described in Paragraph (a) of this Rule.

(c) Placement and Maintenance of Markers. The Board of Commissioners of Perquimans County is designated a suitable agency for placement and maintenance of markers implementing this Rule.

*History Note: Authority G.S. 75A-3; 75A-15;
Eff. November 1, 1988;*

Amended Eff. October 1, 1992;

Temporary Amendment Eff. October 1, 1997;

Amended Eff. July 1, 1998;

Temporary Amendment Eff. February 4, 2000;

Amended Eff. May 1, 2006; June 1, 2005; July 1, 2000.

Perquimans River

-76.46962, 36.193

-76.47099, 36.1915

17

1110

15A NCAC 10F .0355 (a) (1) (B)
revised

 NWZ



EXHIBIT J

March 14, 2013

SCHEDULE FOR THE JANUARY 2014 PUBLIC HEARINGS FOR PROPOSED CHANGES IN WILDLIFE AND FISHERIES MANAGEMENT RULES

HEARING TIME: 7:00 p.m.

DATE	DISTRICT	CITY	LOCATION
January 7, 2014 (Tuesday)	4	Dublin	Bladen Community College
January 8, 2014 (Wednesday)	5	Graham	Courthouse
January 9, 2014 (Thursday)	6	Norwood	South Stanly High School
January 14, 2014 (Tuesday)	9	Murphy	Tri-County Community College
January 15, 2014 (Wednesday)	8	Morganton	Municipal Auditorium
January 16, 2014 (Thursday)	7	Wilkesboro	The Walker Center, Wilkes Community College
January 21, 2014 (Tuesday)	1	Edenton	Swain Auditorium
January 22, 2014 (Wednesday)	2	New Bern	Courthouse
January 23, 2014 (Thursday)	3	Rocky Mount	Nash Community College