



AGENDA

N.C. WILDLIFE RESOURCES COMMISSION

May 12, 2011, 9:00 a.m.

1751 Varsity Drive

NCWRC Conference Room, 5th Floor

Raleigh, North Carolina

CALL TO ORDER - *Chairman Steve Windham*

PLEDGE OF ALLEGIANCE

INVOCATION - *Commissioner Ray White*

RECOGNITION OF VISITORS

MANDATORY ETHICS INQUIRY - North Carolina General Statute 138A-15(e) mandates that the Commission Chair shall remind all Commissioners of their duty to avoid conflicts of interest and appearances of conflict under this Chapter, and that the chair also inquire as to whether there is any known conflict of interest or appearance of conflict with respect to any matters coming before the Commission at this time. It is the duty of each Commissioner who is aware of such personal conflict of interest or of an appearance of a conflict, to notify the Chair of the same. *Chairman Steve Windham*

APPROVAL OF MINUTES - Take action on the March 10, 2011 Wildlife Resources Commission meeting minutes as written in the exhibit and distributed to members (**EXHIBIT A**)

ADMINISTRATION

Financial Status Report - Receive a financial status report on the Wildlife Operating Fund and Wildlife Endowment Fund - *Tommy Clark, Budget Officer - Budget, Planning and Audit* (**EXHIBIT B**)

2010 LAWRENCE G. DIEDRICK SMALL GAME AWARD PRESENTATION

Special Presentation – Present the Lawrence G. Diedrick Award for 2010 to the recipients in the organization category and the individual category – *Dr. David Cobb, Wildlife Management Division Chief*

Short Break for Photographs

ENFORCEMENT UPDATE

“Operation On the Road, On the Water, Don’t Drink and Drive” – Receive an update on the summer 2011 joint law enforcement safety campaign for roads and waterways – *Col. Dale Caveny, Enforcement Division Chief*

WILDLIFE MANAGEMENT

Division Spotlight – “Controlling Problem Wildlife Situations” – *Chris Turner, District One Biologist, Division of Wildlife Management*

Wildlife Management Update – Receive an update on the activities of the Division of Wildlife Management – *Dr. David Cobb, Wildlife Management Division Chief*

Right of Way Request, Rowan County – Consider a right of way request on Second Creek Game Land in Rowan County – *Dr. Cobb (EXHIBIT C)*

Property Disposal Request, Hyde County – Consider staff recommendation for disposal of 21 acres of surplus property in Hyde County – *Dr. Cobb (EXHIBIT D)*

Land Acquisitions Update – Receive a regular staff update on the status of land acquisitions – *Dr. Cobb (EXHIBIT E)*

INLAND FISHERIES

Fisheries Update - Receive a staff update on activities of the Division of Inland Fisheries - *Bob Curry, Inland Fisheries Division Chief*

Property Acquisition, Ashe County – Consider approval to expand the Memorandum of Understanding between the Wildlife Resources Commission and the Ashe County Wildlife Club and pursue a no-cost lease of Trout Lake, managed with Delayed Harvest trout regulations and located east of Jefferson, North Carolina - *Bob Curry (EXHIBIT F)*

Rule Proposal – Establish Size and Creel Limits by Reference to Marine Fisheries Commission Regulations for Saltwater Fishes Caught in Inland Waters

Receive summary of public comments on proposed changes to inland fishing regulations received from local public hearings held in March, and from the WRC internet portal and written correspondence – *Bob Curry (EXHIBIT G-1)*

Consider adoption of proposed rule changes to inland fishing regulations that establish size and creel limits for saltwater species caught in inland fishing waters by reference to Marine Fisheries Commission regulations – *Bob Curry (EXHIBIT G-2)*

ENGINEERING SERVICES

Engineering Services Activity Update – Receive an update about the Division of Engineering Services construction and boating access area renovations – *Erik Christofferson, Engineering Services Division Chief*

Boating Access Area Renovation Request, Henderson County - Consider staff recommendation to partner with Henderson County to renovate a boating access area at the WestField Park on the French Broad River – *Erik Christofferson (EXHIBIT H)*

Boating Access Area Construction Request, Green County – Consider staff recommendation to partner with the Town of Hookerton to build a boating access area on Contentnea Creek in Green County – *Erik Christofferson (EXHIBIT I)*

Property Acquisition, Brunswick County – Consider a staff recommendation to work with the State Property Office to purchase 1.38 acres on the Intracoastal Waterway on Brick Landing Road in Brunswick County – *Erik Christofferson (EXHIBIT J)*

Property Acquisition, Currituck County – Consider a staff recommendation to work with the State Property Office to purchase .12 acres on Currituck Sound adjacent to the WRC Poplar Branch Access Area in Currituck County – *Erik Christofferson (EXHIBIT K)*

No Wake Zone Request, Town of Emerald Isle, Carteret County – Consider adoption of an amendment to 15A NCAC 10F .0376 to establish a no wake zone in the waters of Bogue Sound adjacent to Archer Point, south of and including a portion of the Emerald Isle channel – *Erik Christofferson (EXHIBIT L)*

COMMITTEE REPORTS

Small Game Committee Report – *Bobby Purcell, Chairman*

Migratory Birds, Waterfowl Committee Report – *Maughan Hull, Chairman*

Joint Coastal Recreational Fishing License (CRFL) Committee Report – *Ray White, Chairman*

Committee of the Whole Report – *Steve Windham, Chairman*

COMMENTS BY CHAIRMAN – *Steve Windham*

COMMENTS BY EXECUTIVE DIRECTOR – *Gordon Myers*

ADJOURN

EXHIBIT A

May 12, 2011



MINUTES

March 10, 2011

N. C. Wildlife Resources Commission Meeting

Raleigh, North Carolina

In the absence of *Commission Chairman* Steve Windham, the March 10, 2011 meeting of the North Carolina Wildlife Resources Commission was called to order by *Vice Chairman* Chuck Bennett at 9:00 a.m. in the Commission Room at Wildlife Resources Commission headquarters in Raleigh. Commissioners absent were Steve Windham, Bobby Purcell, Nat Harris, and Ray White.

Vice Chairman Bennett welcomed Commissioners and guests including former House Representative Jim Gulley and his wife Suzanne.

Commissioner David Hoyle, Jr. led the Pledge of Allegiance. Commissioner Mitch St.Clair gave the invocation.

COMMISSIONER ATTENDANCE

Dell Murphy	Wes Seegars	Mitch St. Clair
Chuck Bennett	Eugene Price	Martin Lewis
David Hoyle, Jr.	Dalton Ruffin	Randy Allen
Joe Barker	John Litton Clark	Berkley Skinner
Doug Parsons	Maughan Hull	Durwood Laughinghouse

VISITORS

Hal Atkinson – Camp-Younts Foundation	Ned Jones – NC Trout Unlimited
Curt Schmidt – NC Bowhunters Association	Culley Wilson - NCBHA
Mickey Strader – NC Bowhunters Association	Ramon Bell - NCBA
Tommy Kimball – NC Bowhunters Association	J. R. Stone – NCBA
Brian Lehrschall – NC General Assembly	Tom Berry
Jim Gulley – former N.C. House Representative	Suzanne Gulley

MANDATORY ETHICS INQUIRY

Vice Chairman Bennett advised the Commission of the mandatory ethics inquiry as presented in the agenda.

MINUTES

Commissioner David Hoyle, Jr. made a motion to approve the January 13, 2011 Wildlife Resources Commission Meeting minutes. The motion was seconded by Commissioner Berkley Skinner and carried. **The Minutes**, titled Exhibit A, are hereby incorporated into the official record of this meeting.

ADMINISTRATION

Cecilia Edgar, *Deputy Director of Administration*, gave the financial status report on the Wildlife Operating Fund and Wildlife Endowment Fund as of January 31, 2011. Balance for the Wildlife Operating Fund was \$20,515,085.95. Balance for the Endowment Fund was \$79,997,608.09 **The Financial Status Report**, titled Exhibit B, is hereby incorporated into the official record of this meeting.

SPECIAL RECOGNITION

Vice Chairman Bennett welcomed former House Representative Jim Gulley and his wife Suzanne, of Matthews. Bennett said that Mr. Gulley, an avid hunter and member of the Legislature for fourteen years, supported initiatives and legislation to benefit wildlife resources and the sportsmen of the State. On behalf of the Wildlife Resources Commission and in gratitude for Gulley's service and friendship Bennett presented Gulley with a wildlife print and certification of appreciation.

Bennett then called a five minute recess so that photographs could be taken. The assembly reconvened at 9:10.

INLAND FISHERIES

Inland Fisheries Update

Bob Curry, *Inland Fisheries Division Chief*, presented an update of the activities of the Inland Fisheries Division. Curry mentioned that fisheries outreach activities were held for 250 students during the Dixie Deer Classic in Raleigh. The third annual Cape Fear Expo will be held in Wilmington March 18-20. On March 1 striped bass fishing opened on the Roanoke River. Curry announced that public hearings will be held in late March in Elizabethtown, New Bern, Edenton and Raleigh to receive comments about the rule proposal to establish size limits, creel limits, and seasons for spotted sea trout, flounder, red drum, and gray trout by reference to regulations established by NC Marine Fisheries Commission (MFC) in adjacent joint and coastal waters. Curry announced that North Carolina will host the 40th annual Federal Aid Conference in Wilmington.

Fisheries Spotlight – Restoring North Carolina’s Rivers

Bob Curry introduced Steve Fraley, *Western Aquatic Wildlife Diversity Coordinator*. Fraley presented a spotlight about agency activities for the conservation of priority aquatic species including some crayfish and mussels. Fraley stated that the program to restore North Carolina’s rivers uses the agency Strategic Plan and Wildlife Action Plan as guidance with the goal of conserving, recovering, and keeping common those aquatic species that are stressed by habitat loss and degradation, thermal and hydrologic alterations, and channel alterations. Fraley highlighted several successful restorations working with partners on creeks and rivers in the western part of the state.

WILDLIFE MANAGEMENT

Wildlife Management Update

Vice Chairman Bennett called on Dr. David Cobb, *Wildlife Management Division Chief*. Dr. Cobb directed the Commissioners to information about White-Nose Syndrome in bats discovered in a second North Carolina county, the 2011 Midwinter Waterfowl Survey, the Wildlife Conservation Lands Program, and the Wildlife Diversity Annual Report for 2009-2010. The Division participated in the Dixie Deer Classic. A meeting was held in Asheville two weeks ago to discuss elk management. Cobb mentioned that Spring Turkey Season Youth Day will be the first Saturday in April.

Property Related Issues

Dr. Cobb presented in **Exhibit C** a staff recommendation to coordinate with the State Property Office for the acquisition of the Voice of America Site A Tract in Beaufort County, at no cost to the agency as a transfer from the Federal Government. Cobb stated that the property has been an early successional habitat for 50 years and is a nesting area for the Henslow sparrow, an endangered bird. Chief Deputy Director Mallory Martin stated that the U.S. Marine Corps is interested in an Osprey landing site on a portion of Property Site A. Martin stated that the towers at the VOA site will remain unless they are removed by the U.S. Marine Corps or by the Wildlife Resources Commission. The motion to approve the acquisition of the VOA tract as a transfer from the Federal Government was made by Eugene Price, seconded by Wes Seegars and carried. Dr. Cobb then presented a staff recommendation to work with the State Property Office and to fund the purchase of the Piedmont Land Conservancy Tracts in Alleghany and Surry counties for twenty thousand dollars. Cobb noted that the property is worth one million dollars. The motion to adopt was made by Eugene Price. It was seconded by Durwood Laughinghouse and carried. **Exhibit C** is hereby incorporated into the official record of this meeting.

Property Purchase – Currituck County

Dr. Cobb presented **Exhibit D**, a request from Currituck County to purchase 56.35 acres of state-owned property to accommodate state and federal regulations associated with a spray field and airport. On a motion by Maughan Hull and second by Eugene Price, the Commission adopted the request from Currituck County with the following conditions:

Require the County to construct a small 30 by 50 feet parking area off Maple Road for game land users;

Retain a 20 foot easement across the 56 acres to be acquired by the County to provide pedestrian access to the game land;

Require the County to enroll the 56 acre tract into the Game Land Program.

Exhibit D is hereby incorporated into the official record of this meeting.

Land Acquisitions Update

Dr. Cobb presented a regular staff update on the status of land acquisition projects in **Exhibit E**. It is hereby incorporated into the official record of this meeting.

ENGINEERING SERVICES

Boating Access Area Utility Easement Request – Dare County

Erik Christofferson, *Engineering Services Division Chief*, presented **Exhibit F**, a staff recommendation to grant a utility easement to Dare County at the Bowsertown Boating Access Area in Manteo. Dare County will install a water main to extend potable water service to parts of Roanoke Island. The motion to adopt the utility easement was made by Durwood Laughinghouse, seconded by David Hoyle, Jr., and carried. **Exhibit F** is hereby incorporated into the official record of this meeting.

TECHNOLOGY PRESENTATION – SHAREPOINT

Vice Chairman Bennett called upon Todd Leck, *Network Manager*. Leck gave an introductory presentation about SharePoint. SharePoint is a password protected portal for Commissioners and staff to share tasks, maintain team calendars, store and search files and documents pertaining to various committees and agency reports. Leck stated that the portal, while password protected, is subject to public records requests. He also stated that paper copies will remain available for those Commissioners who cannot use the SharePoint portal. Active committee documents are being loaded first. Staff contacts will post items and email alerts will be sent to the Commissioners.

COMMITTEE REPORTS

Small Game Committee Meeting Report

In the absence of Committee Chairman Bobby Purcell, Dr. David Cobb reported that the Small Game Committee met on March 9, 2011 and received a report from Frank Barrick about issues with quail and Coopers hawks. The Committee discussed the 2010 Diedrick Small Game Award. Dr. Cobb requested that the committee send their nominations soon, and announced that Chairman Bobby Purcell plans to hold a Small Game Committee meeting before the May Commission meeting to consider the Diedrick Award winner.

Big Game Committee Meeting Report

Chairman David Hoyle, Jr. reported that the Big Game Committee met on March 9, 2011. Three representatives from the Department of Agriculture attended and discussion included issues regarding feral swine. There is great concern about interaction between feral swine and domestic and commercial hogs that will result in an increase in the feral swine population, and about the threat of diseases spread among the feral and domestic populations. The Big Game Committee requested a collaborative news release between the WRC and Agriculture about feral swine. In 94 counties in North Carolina the feral swine are not regulated by the WRC. Free sample blood collection kits are available to hunters from the Department of Agriculture for testing feral swine for disease. Both agencies want to educate the public about the public health threat of brucellosis, which can be transmitted to humans by swine. Pseudorabies, another disease of concern, is *not* transmissible to humans. Hoyle announced that the next meeting of the Big Game Committee will be held in May and will be open discussion about bears and bear seasons and limits. Hoyle expects large attendance and plans to hold that meeting in the auditorium on the first floor.

Joint Cold Water Fisheries/Land Use and Access Committee Meeting Report

Martin Lewis, Cold Water Fisheries Chairman, announced that the two committees met on March 9, 2011 and went into closed session to discuss public trust issues. Because of time constraints the committees were unable to consider the other items on the agenda. That discussion will be deferred until later.

Education, Marketing and Outreach Committee Meeting Report

Chairman Dell Murphy reported that the EMO Committee met on March 9, 2011. Erik Christofferson, *Engineering Services Division Chief*, Greg Jenkins, *Editor of Wildlife in North Carolina* magazine, and Mark Dubowski, *Marketing Director* presented a business plan proposal to help the magazine become self-sustainable and to increase revenues by increasing circulation and advertising. The suggestion is to reduce the number of magazine issues to bi-monthly, with the addition of special editions associated with hunting and fishing.

Action Item – *Wildlife in North Carolina New Business Plan:* Chairman Murphy made a motion from the EMO Committee for the Commission to endorse the plan concept in general with the recommendation that the Executive Director develop and implement an appropriate advertising acceptance policy. That motion was seconded by Wes Seegars. *Commissioner Eugene Price recused himself from the discussion and consideration of the motion.* The motion carried.

Migratory Birds, Waterfowl Committee Meeting Report

Committee Chairman Maughan Hull reported that the Migratory Birds and Waterfowl Committee met on March 9, 2011. The committee and staff discussed hunting seasons in North Carolina which are more restrictive than the federal frameworks. The Northeast Goose Season and issues with migrant versus resident Canada geese and hunting opportunities was discussed. The data will be analyzed and the committee will revisit this issue in 2012. Discussion was held regarding the more liberal black duck seasons that are allowed in adjacent states. On behalf of the Waterfowl Committee Hull requested a breakdown of expenses for the waterfowl funds. He asked staff to investigate “Aid and Public Assistance” and to provide a report and recommendation to the full Commission at the May meeting. Hull stated that discussion was held about the Field Sanctuary Program, which has been reduced to only one site and is expensive to maintain. Staff recommends ending the Field Sanctuary Program.

Action Item – *Field Sanctuary Program:* Maughan Hull made a motion to end the Field Sanctuary Program. The motion was seconded by David Hoyle, Jr. and carried.

Habitat, Non-Game and Endangered Species Committee Meeting Report

Committee Chairman Chuck Bennett reported that the committee met electronically. The committee has asked Dr. Cobb to develop a protocol for members of the non-game and Scientific Councils.

Letter from the North Carolina Bear Hunters Association

Vice Chairman Chuck Bennett read into the minutes a letter from Jim Noles, *President of the North Carolina Bear Hunters Association*, in appreciation of the Resolution by the North Carolina Wildlife Resources Commission at the January 13, 2011 WRC Meeting, that supports hunting with dogs in North Carolina. The letter is incorporated into the official record of this meeting.

Land Use and Access Committee Meeting Followup

Doug Parsons, Chairman of the Land Use and Access Committee, asked about the discussion of plans regarding the offer of the conservation easement of PCS Phosphate property in Beaufort County. Chief Deputy Director Mallory Martin stated that the meeting was postponed at the request of PCS Phosphate. Plans are to hold a meeting with PCS Phosphate and the U.S. Army Corps of Engineers and to report to the Commission at the May meeting.

COMMENTS BY THE EXECUTIVE DIRECTOR

Gordon Myers, *Executive Director*, announced that he has attended the meeting of the NER Subcommittee at the Legislature. They are doing agency overviews with discussions of consideration of merging some of the agencies. Myers stated that work is ongoing on the Feral Swine bill and the Landowner Protection Act bill. Myers is unable to speak about budget reductions because of the talk of mergers of various agencies and the impact any of those might have on the WRC.

COMMENTS BY THE CHIEF DEPUTY DIRECTOR

Mallory Martin, *Chief Deputy Director*, thanked agency staff for their efforts in holding five committee meetings on March 9. Martin stated that the agency is dealing with many complex issues. He stated that the SharePoint portal offers storage opportunities for the committee data and documents and hopes it will be used.

ADJOURNMENT

There being no further business, the meeting was adjourned by Vice Chairman Bennett at 10:40 a.m.

All exhibits are incorporated into the official record of this meeting by reference and are filed with the minutes.

Chuck Bennett, Vice Chairman

Date

Gordon Myers, Executive Director

Date



North Carolina Bear Hunters Association

3602 Stonebrook Farms Court, Greensboro, North Carolina 27406 336-676-1077 Fax 336-676-8790

January 14, 2011

Steve Windham
Chairman
North Carolina Wildlife Resources Commission
1701 Mail Service Center
Raleigh, NC 27699

RE: Resolution - Affirmation of Support for North Carolina's Hunting Dogs

Dear Chairman Windham:

The North Carolina Bear Hunters Association wishes to express our most sincere appreciation for the North Carolina Wildlife Resources Commission's resolution and strong statement of support for hunting with dogs in North Carolina.

Over the past 360 years, North Carolina hunters have used hunting dogs to bring sustenance home and put wild game on our family's table. Little has changed in the manner which hunters use our dogs to find, pursue, bay and recover wild game. Today, North Carolina's hunting dogs remain a very important part of our hunting heritage and traditions, and sustained by those hunters faithful to the hunting culture we hold so dear.

The Commissions support comes at a crucial time, for many challenges lay ahead for our hunting dogs and preserving one of the oldest and effective methods of hunting. We look forward to opportunities to work together to ensure that hunting with dogs in North Carolina can be enjoyed for generations to come.

Again, on behalf of our organization, its members, and the sportsmen/women of North Carolina, we thank you again for this unanimous Resolution and reaffirmation of support.

Respectfully submitted,

A handwritten signature in black ink, appearing to read "Jim Noles". The signature is written in a cursive, flowing style.

Jim Noles
President



NORTH CAROLINA WILDLIFE RESOURCES COMMISSION

YEAR TO DATE REVENUES AND EXPENSES

EXHIBIT B

May 12, 2011

	<u>March 2010</u>	<u>March 2011</u>
Balance July 1		
Plus: Receipts to Date	\$ 19,866,967.31	\$ 23,459,611.18
	<u>52,949,086.22</u>	<u>55,056,710.98</u>
Balance and Receipts to Date	72,816,053.53	78,516,322.16
Less: Disbursements To Date	<u>50,611,618.96</u>	<u>57,075,169.60</u>
Balance March 31	<u>\$ 22,204,434.57</u>	<u>\$ 21,441,152.56</u>

Summary and Analysis of Expenditure By Purpose - Code 24350, 24351, 24352 and 24353

	March 2010		March 2011	
	Authorized Budget 2009-10	Expenditures	Authorized Budget 2010-11	Expenditures
2100 Administration	\$ 9,698,561.00	6,499,794.82	\$ 10,889,081.00	6,315,496.06
2120 Enforcement	21,703,890.00	14,772,998.69	22,682,800.00	17,691,328.32
2130 Education	5,194,352.00	3,476,477.92	5,131,774.00	3,443,582.19
2140 Inland Fisheries	8,515,794.00	5,722,831.28	8,918,282.00	6,484,678.38
2150 Management	18,845,027.00	10,673,510.86	18,501,031.00	10,829,222.89
2160 Engineering Services	7,115,478.00	5,374,819.32	9,747,785.00	8,340,122.39
2170 W/Life Fund Receipts	5,459,638.00	4,091,186.07	5,332,338.00	3,970,739.37
TOTAL	\$ 76,532,740.00	\$ 50,611,618.96	\$ 81,203,091.00	\$ 57,075,169.60
		66.13%		70.29%

NORTH CAROLINA WILDLIFE RESOURCES COMMISSION

ENDOWMENT FUND YEAR-TO-DATE

	<u>March 2010</u>	<u>March 2011</u>
Balance March 1	\$ 73,436,561.81	\$ 80,497,728.87
Plus: Revenues from Sales	146,767.90	199,804.10
Return on Investment	417,503.33	465,473.47
	<u>74,000,833.04</u>	<u>81,163,006.44</u>
Less: Transfers Out	-	-
Balance March 31	<u>\$ 74,000,833.04</u>	<u>\$ 81,163,006.44</u>
Market Value	<u>\$ 76,200,749.88</u>	<u>\$ 84,985,091.29</u>

Endowment Fund Interest

Sources of Interest Available	Expendable	Non Expendable	Budgeted Obligation	Transferred to Operations	Transferred to Capital Projects	Expendable Balance
ADULT Licenses	\$ 5,738,739.40		\$ 3,315,811.00	-	-	\$ 2,422,928.40
INFANT Licenses	-	\$ 7,674,742.57				-
YOUTH Licenses		562,077.03				-
Magazine Subscriptions	344,274.71		179,485.00	-		\$ 164,789.71
Contributions	320,935.71					\$ 320,935.71
TOTAL	<u>\$ 6,403,949.82</u>	<u>\$ 8,236,819.60</u>	<u>\$ 3,495,296.00</u>	<u>\$ -</u>	<u>\$ -</u>	<u>\$ 2,908,653.82</u>

2010-11 Budgeted Obligated

Allocation of Endowment Interest - Sportsman Fund	3,315,811.00
Allocation of Endowment Interest - Magazine Fund	179,485.00
	<u>\$ 3,495,296.00</u>

2010-11 Transferred To Date

To Sportsman Fund	-
To Magazine Fund	-
To Capital Projects	-
	<u>\$ -</u>

EXHIBIT C

May 12, 2011





North Carolina Wildlife Resources Commission

Gordon S. Myers, Executive Director

April 13, 2011

MEMORANDUM

TO: Dr. David Cobb, Ph.D., Chief
Division of Wildlife Management 

FROM: Isaac Harrold, Section Manager
State & Private Lands Programs 

SUBJECT: Transcontinental Gas Pipe Line Company, LLC (Transco)
Right-of-Way Request
Second Creek Game Land – Rowan County

Transco Pipeline has requested 1.60 acres of new permanent right-of-way (ROW) across Second Creek Game Land in Rowan County to accommodate expansion of an existing natural gas pipeline system.

An existing ROW containing three pipelines currently crosses Second Creek Game Land for a total distance of approximately 5,954 linear feet. Transco is requesting an expansion of this existing ROW, equating to 1.60 acres, along the existing alignment to accommodate construction of a new 42 inch diameter pipe.

Staff recommends approval of this request, but offers the following conditions to mitigate potential impacts:

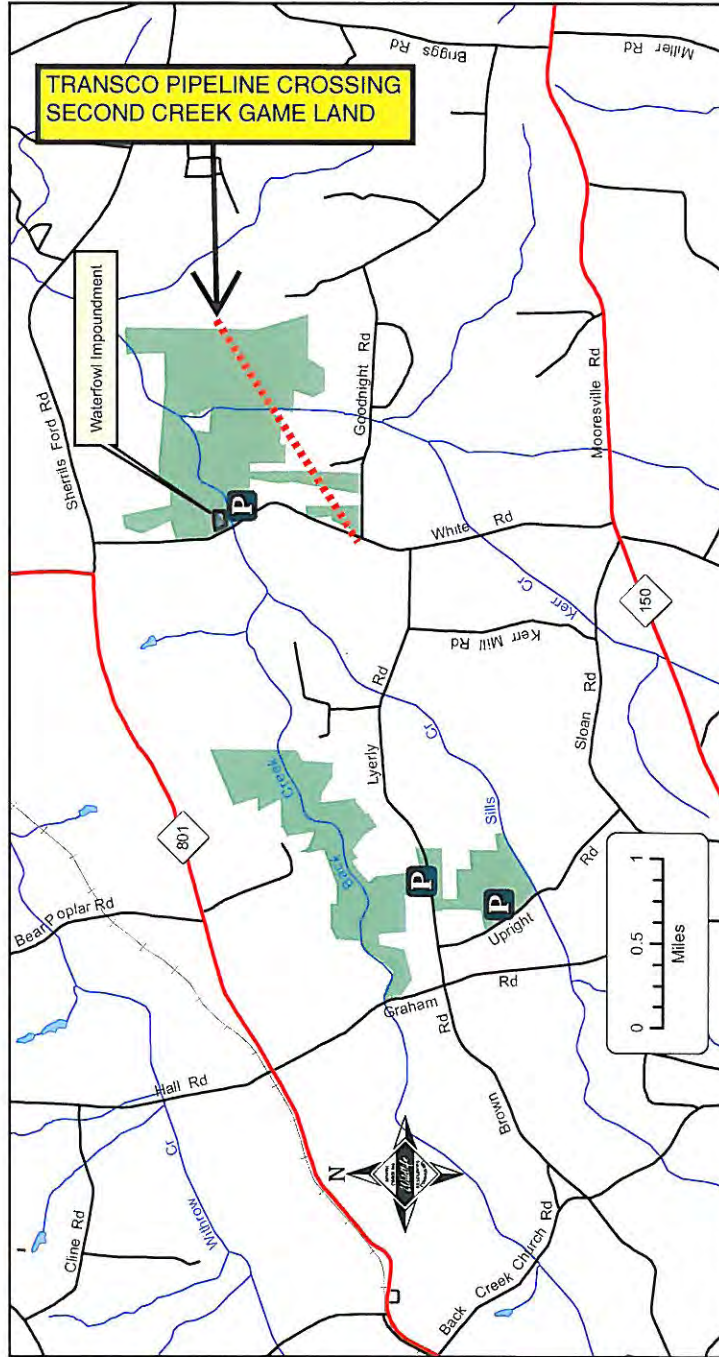
1. Any painted boundary tree damaged or removed by Transco will be replaced by a carsonite post supplied by NC Wildlife Resources Commission (NCWRC).
2. All logging debris and slash will be removed from the pipe line. Transco will be allowed to fine-chip debris and spread uniformly over the work area. Chips will not be placed so thick that they prohibit vegetative re-growth.

3. Transco will research and (if found) provide plan and profile drawings for the three existing pipelines at the crossing at Kerr Creek. Plan and profile drawing of the proposed 42" pipeline will be supplied to NCWRC.
4. At the location where the pipe line crosses Kerr Creek, stream banks are steep and eroding. Due to the uncertainty of the exact profile of existing pipelines, Transco is reluctant to modify stream bank slopes at this time. Transco must consult with NCWRC personnel if the existing pipe lines/stream crossing needs modification in the future. NCWRC prefers a more gradual slope grade at crossing to prevent stream bank erosion and establishment of a riparian no-mow zone (approx. 50') along the creek planted with smaller native woody plants, such as silky dogwood, paw paw, silky willow, and tag alder. Removal of any problem plants can be accomplished by selective cutting.
5. In the event that streambank stability or pipeline integrity issues become apparent in disturbed and maintained ROWs, the pipeline company will be responsible to rectify unstable conditions using state-of-the-art natural channel design techniques and native plant based stream bank soil bioengineering instead of hard armoring or similar "traditional" methods. If pipe replacement or major repair work on any existing pipelines is done at the crossing, pipe designs will be done in a manner to allow state-of-the-art stream enhancement and restoration (if restoration is practicable). Should there be any disagreement between the land owner and the pipeline, a mutually agreed upon third party arbitrator, who is professionally trained in natural channel design concepts and who is experienced in stream geomorphic assessments and restoration in the State of North Carolina will resolve the disagreement and both parties will abide by the arbitrator's evaluation and recommendations.
6. NCWRC will require a specialized re-seeding mix composed of wheat, red clover, creeping red fescue, switchgrass and big bluestem for permanent ROW and temporary workspace reclamation.
7. At severe slope areas and stream crossings, where necessary and/or required, any soil stabilizing fabric or matting must be made with natural fibers. No plastic matting will be allowed.
8. Transco will endeavor to complete construction activities prior to the beginning of Deer – Gun Season (November 17, 2011). If construction is not completed by this date, Transco will need to return following Deer-Gun Season (January 1, 2012) to complete permanent stabilization efforts.

9. Transco agrees to compensate NCWRC in the amount of \$3,300 for the removal of 2.2 acres of timber.
10. Transco agrees to compensate farm lessees that rent land on Second Creek Game Land for any lost revenue due to crop damage or delays in planting that will result in lost revenue.
11. ROW maintenance mowing shall occur on a 2 – 3 year rotation during late winter (February 1 – March 31).

SECOND CREEK GAME LAND

N.C. Wildlife Resources Commission,
Rowan County (1,140 acres)





TRANSCO PIPELINE
345 Greenbrier Drive
Charlottesville, VA 22901-1618
434/973-4384
434/964-2130 fax

March 23, 2011

via Federal Express

Mr. Bill Parsons
South Piedmont Management Biologist
North Carolina Wildlife Resources Commission
2995 North U.S. Highway 1
Hoffman, North Carolina 28347

Re: Proposed Expansion of the Transcontinental Gas Pipe Line Company, LLC
Natural Gas Pipeline System, Rowan County, North Carolina
Mid-South Project

Dear Mr. Parsons:

I believe a colleague of mine, Scott Buettner, may have made an initial contact with you regarding Transco's plans to expand it's existing natural gas pipeline system through Rowan County, North Carolina with the construction of a new 42" diameter pipeline.

You may have received contact from Mr. Joseph Dean, our Sr. Environmental Scientist, also working on this project – as well as information from the Federal Energy Regulatory Commission (FERC) advising of Transco's intention to undertake an expansion project.

The purpose of this letter is to provide you with our right of way plats and documents pertaining to the Second Creek Game Lands. As you will see from the documents, our new pipeline will parallel the existing three pipelines, and be approximately (25) feet northwesterly of the most northwesterly presently existing pipeline. The new line will cross the Second Creek Game Lands a total distance of approximately (5,954) linear feet and our construction footprint will utilize approximately (17.76) acres. The existing right of way across the Second Creek Game Lands is defined in part, and open and unrestricted in part. Across the defined portion, Transco will need (1.60) acres of new, permanent right of way.

Mr. Bill Parsons
March 23, 2011
Page 2

Please review these documents and contact me so that we can determine how to proceed with the acquisition of the necessary right of way and what, if any, additional information you might desire or require.

If you would like to have an on-site meeting to discuss specifics of this project and view the impacted areas, we will be happy to make arrangements for same.

I am also attaching a copy of a letter addressed to Shari Bryant of your Raleigh office, which addresses some of the questions she had regarding the project. Her questions were contained in a letter responding to the FERC contact to various agencies, and they pertain to portions of the project throughout North Carolina and not only pertaining to the Second Creek Game Lands.

Transco's present schedule indicates that we intend to start construction on this project in August, 2011. I understand there may be concerns regarding our construction and impacts to hunting during the Fall seasons. It is therefore, imperative that we move forward with obtaining your approvals and the required new right of way, so we can minimize any impacts in the Fall. We are grateful for any assistance you can offer to see that this work moves forward in a timely manner so that hunting impacts can be minimized and our service commitments can be met.

If you have any questions regarding this matter, please feel free to contact me at (434)964-2105.

Sincerely,



Bradley L. Lushbaugh
Team Leader, Land

EXHIBIT D

May 12, 2011



☒ North Carolina Wildlife Resources Commission ☒

Gordon S. Myers, Executive Director

April 13, 2011

MEMORANDUM

TO: Dr. David Cobb, Ph.D., Chief
Division of Wildlife Management

FROM: Isaac Harrold, Section Manager
State & Private Lands Programs

SUBJECT: Request to Dispose of Surplus Property
Gull Rock Game Land – Hyde County

Handwritten initials 'DJC' in black ink, and a signature in blue ink below it.

In 2004, the WRC purchased what is known as the Carter tract of Gull Rock Game Land. An adjoining property was “excepted” from WRC’s acquisition at time of closing.

Recently, a local property owner conducting survey work on adjoining properties discovered that WRC owns a canal and roadbed around that portion of the Carter tract that was excepted in the original transaction. We were previously unaware that WRC owned this property. This narrow strip of linear property is approximately five miles long X 30 feet wide and completely surrounded by private property. It encompasses a total of 21 acres and shares no connection with any other WRC ownership, with the exception of two common corners.

Staff can identify no management potential or other valid reason for WRC to retain ownership of this property. Thus, we recommend approval to seek State Property Office assistance to sell the property as surplus.

GULL ROCK GAME LAND (continued)

N.C. Wildlife Resources Commission,
Hyde County

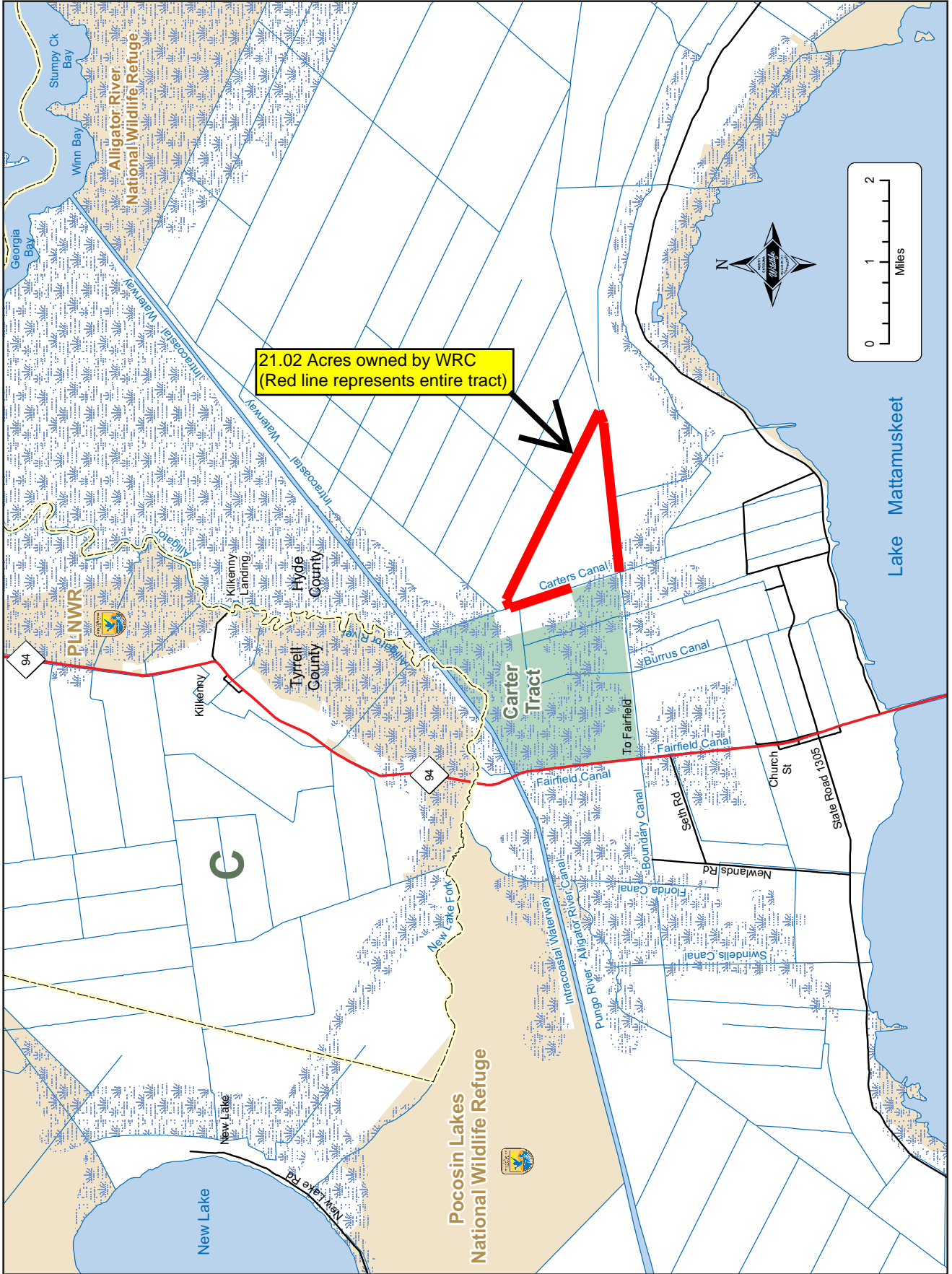


EXHIBIT E

May 12, 2011

LAND ACQUISITIONS/ EASEMENTS/ DISPOSITIONS
(Division of Wildlife Management 4/13/11)

Color Key	
	Active & Funded
	Completed
	Inactive
	Active & Not Funded

Reference No. and Project Name	Acres	County	Game Land	Date Approved	Current Status	Funding
277 - Coastal Lumber tracts	8,000	Beaufort	Various	7/18/2001	State Property - Pending	CWMTF/NHTF
277 - Coastal Lumber tracts		Pitt		7/18/2001	State Property - Pending	CWMTF/NHTF
277 - Coastal Lumber tracts		Camden		7/18/2001	State Property - Pending	CWMTF/NHTF
278 - Posey Henderson tract	146	Polk	Green River	7/18/2001	Completed, 2003	CWMTF/NHTF-\$236,000
279 - Saltworks tract	444	Carteret	Carteret	7/18/2001	Completed, 2005	Gift from DU
280 - Johnston tract	1,074	Harnett	New	7/18/2001	Inactive	CWMTF/NHTF
281 - IP tract Moore	1,100	Moore	Sandhills	8/29/2001	Sold - Inactive	CWMTF/NHTF/Sec. 6
282 - Pipkin- Robbins tract	118	Dare	Roanoke Island Marsh	8/29/2001	Completed	CWMTF \$ 200,000
283 - Johnson tract	71.5	Caswell	Caswell	8/29/2001	Completed	CWMTF 57,000/Endowment
284 - Ocia Hill tract	12	Tyrrell	Futch	8/29/2001	Inactive	Wildlife Fund
285 - Deviney tract	231	Rutherford	South Mountains	10/5/2001	State Property - Pending	CWMTF/NHTF
286 - Wolf's Lair tract	1360	Henderson	Dupont	12/5/2001	Inactive	CWMTF/NHTF
287 - Caldwell tract	55	Haywood	Nantahala	12/5/2001	State Property - Pending	CWMTF/NHTF
288 - Adkins tract	5	Caswell	Caswell	12/5/2001	Not Available	Wildlife Fund
289 - Forbes tract	1391	Beaufort	Goose Creek	12/5/2001	Sold	CWMTF/NHTF
290 - Snodes Creek/Tetterton tract	289	Beaufort	Goose Creek	12/5/2001	Sold	CWMTF/NHTF
291 - Angola Bay tract	18,000	Pender	Angola Bay	12/5/2001	Completed 2006	NHTF \$10,249,418
292 - Whitehurst /Gaskins tract	230	Craven	Neuse River	12/5/01; 8/27/03	Completed	Wildlife\$750,00
293 - Beck	2500	Onslow	Stones	12/5/2001	Completed, 2004	CWMTF \$2,146,00/NHTF\$1,250,000/DOD 600,00
294 - Rose bay tract	1541	Hyde	Gull Rock	12/5/2001		CWMTF/NHTF
295 - Needmore tract	4600	Macon/Swain	Needmore	12/5/2001	Completed, 2004	CWMTF6.6 million/NHTF 1.5 million/EEP 7.5 million/
296 - Gersing tract	836	Avery	New	12/5/2001	Not Available	CWMTF/NHTF
297 - Harrell tract	46.94	Currituck	North River	1/9/2002	Completed, Dec - 2002	Wildlife Fund 63,000
298 - Ledbetter Estate tract	989	Richmond	Sandhills	1/9/2002	Inactive	NHTF, CWMTF, Sec. 6 funds
299 - Whitley tract	90	Martin	Roanoke River	3/6/2002	Inactive	Roanoke River escrow
300 - Pridgen tract	867	Pender	Holly Shelter	3/6/2002	Completed, 2004	CWMTF \$413,689, NHTF-\$251,000
301 - Pender 4 tract	1151	Pender	Holly Shelter	3/6/2002	Completed, 2004	CWMTF, NHTF-\$168,342
302 - Texas Plantation LLC tract	1600	Tyrrell	New	3/6/2002	Inactive	CWMTF, DU Marsh
303 - Mayo tract	121	Beaufort	Goose Creek	5/15/2002	Inactive	CWMTF
304 - Bollinger Gap tract	90	Burke	South Mountains	7/17/2002	Completed	NHTF - \$180,000
305 - Rhodes Pond tract	445	Cumberland	Rhodes Pond	7/17/2002	closed	DOT mitigation
306 - RPM tract	917	Carteret	Croatan	8/28/2002	Completed, 2004	NHTF - \$50,000, transfer from Coastal land trust
Pettiford Creek tract	114	Carteret	Croatan		Completed 2006	
307 - East Gum Swamp tract	261	Beaufort	Goose Creek	8/28/2002	Inactive problems w/ mineral	NHTF, \$313M CWMTF

LAND ACQUISITIONS/ EASEMENTS/ DISPOSITIONS
(Division of Wildlife Management 4/13/11)

Color Key	
	Active & Funded
	Completed
	Inactive
	Active & Not Funded

<u>Reference No. and Project Name</u>	<u>Acres</u>	<u>County</u>	<u>Game Land</u>	<u>Date Approved</u>	<u>Current Status</u>	<u>Funding</u>
308 - Norman tract	71	Rutherford	South Mountains	8/28/2002	Completed, Dec - 2003	NHTF - \$140,000
309 - Stamper tract	20	Wilkes	Thurmond	8/28/2002	Sold	WEF
310 - Atkinson tracts	226	Pender	Holly Shelter	8/28/2002	Completed, May 2003	NHTF - \$242,000
311 - Rodman Road tract	1391	Beaufort	Van Swamp	10/4/2002	Sold	WEF-Wildlife Fund \$975M
312 - Holzbach tract	74.8	Richmond	Sandhills	12/4/2002	Inactive	CWMTF, NHTF
313 - Law tract	22.2	Richmond	Sandhills	12/4/2002	Inactive	CWMTF, NHTF
314 - Carter tract	30.8	Richmond	Sandhills	12/4/2002	Inactive	CWMTF, NHTF
315 - Kier tract	500	Camden	North River	12/4/2002	Inactive pending Coastal	CWMTF, NHTF
316 - GMS tract	8476.2	Tyrrell	Alligator River	1/8/2003	Closed June 2008	CWMTF(\$1,700,000 , (NHTF \$1,000,000)
317 - Tryon Peak-Jenkins tract	12.02	Polk	Green River	1/8/2003	Inactive no access	Donation
318 - Wakefield Associates tract	120	Burke	South Mountains	3/3/2003	lactive	NHTF, CWMTF, EEP and Wildlife Fund
319 - Lone Mountain tract	1,087	Rutherford	South Mountains	3/3/2003	Completed 2005	NHTF \$1,478,750, CWMTF\$561,000, EEP \$192,000
320 - Gillespie tract	10	Caswell	Caswell	3/3/2003	Completed	Wildlife Fund
321 - Chowan Swamp tracts	6,466	Gates/Hertford	Chowan Swamp	3/3/2003	Completed	\$CWMTF 3,000,000 EEP
A. Plum Creek			Chowan Swamp		Completed, 2004	
B. Coastal Lumber Harrold			Chowan Swamp		Completed, 2004	
C. Blue Sky Timber		Gates	Bertie		Completed, 2004	
322 - Johns River tracts	3,000	Caldwell/Burke	New	3/3/2003	Completed, 2007	NHTF, CWMTF, DU Marsh, EEP, NAWCA
Johns River Loop Road	1,001	Burke	New	3/3/2003	Completed 2006	CWMTF \$2,238,000 NHTF \$1,200,00
Johns River II South	519	Burke	New	3/3/2003	Completed, 2007	CWMTF
Johns River I North	2,247	Burke	new	3/3/2003	Completed, 2007	CWMTF
323 - Ingram tract	818	Transylvania	Toxaway	3/3/2003	Inactive	NHTF, CWMTF, EEP
324 - Wallace-Gray tract	820	Burke/McDowell	Pisgah	5/16/2003	Completed 2006	NHTF\$ 976,000
325 - Durant Island	2000	Dare	New	5/16/2003	Not available	CWMTF, NHTF
326 - Taylor tract	2918	Pender	Angola Bay	5/16/2003	Inactive	CWMTF, NHTF
327 - Kraus tract	1584	Jackson	New	5/16/2003	NA Acquired by TNC	CWMTF, NHTF
328 - Bolin Knob tract	468	Burke/McDowell	South Mountains	5/16/2003	Completed, 2004	CWMTF\$920,000 , NHTF- \$712,000
329 - Folkstone tract	400	Onslow	Stones Creek	5/16/2003	Completed, 2007	CWMTF grant \$1,092,000
330 - H & M tract	200	Onslow	Stones Creek	5/16/2003	Completed, 2005	CWMTF 637M, NHTF
331 - Lanier tract	300	Onslow	Stones Creek	5/16/2003	Completed, 2005	CWMTF \$1,140M, NHTF
332- Pugh tract	120	Hyde	Gull Rock	7/16/2003	Inactive pending DOT	NHTF, CWMTF, EEP
333- Barker I tract	33.5	Caswell	Caswell	7/16/2003	Completed, 2004	CWMTF 193,000
334- Barker II tract	83	Caswell	Caswell	7/16/2003	Completed, 2004	NHTF, CWMTF, EEP
335- Hodges tract	125	Caswell	Caswell	7/16/2003	Completed, 2003	NHTF, CWMTF, EEP
336- Brumley tract	300	Caswell	Caswell	7/16/2003	Completed, 2007	NHTF, CWMTF, EEP
337- CZR tract	100	Pender	Angola Bay	7/16/2003	State Property - Pending	donation from mitigation
338- Waccamaw IP tract	1945	Columbus	Columbus County	7/16/2003	State Property - Pending	NHTF, CWMTF, EEP
339- Pee Dee tract/Diggs	1600	Richmond	Pee Dee	8/27/2003	Closed 10/30/2009	NHTF, CWMTF, EEP
340- Collier tract	2	Currituck	Currituck Banks	8/27/2003	Completed	Donation/ Wildlife Fund
341- Lost Bridge tract	160	Macon	Needmore	8/27/2003	State Property - Pending	EEP

LAND ACQUISITIONS/ EASEMENTS/ DISPOSITIONS
(Division of Wildlife Management 4/13/11)

Color Key	
	Active & Funded
	Completed
	Inactive
	Active & Not Funded

Reference No. and Project Name	Acres	County	Game Land	Date Approved	Current Status	Funding
342-Mingo tract		Caldwell/Wilkes	Buffalo Cove	8/27/2003	Completed, Dec - 2003	NHTF\$1,000,000, CWMTF \$13,500,000, EEP\$7,000,000
343-Drowning Creek tract	700	Richmond	Sandhills	10/3/2003	Completed, 2003	EEP
344-Linville River tract	1300	Burke	Pisgah	10/3/2003	Completed, 2005	NHTF-\$2,019,000, EEP \$1,150,000
345-McDonald tract	39	Scotland	Sandhills	12/3/2003	Inactive	Wildlife Fund
346-Odum/McPherson tract	260	Scotland	Sandhills	12/3/2003	Closed 9/23/08	USFWS section 6 grant 249,075 CWMTF 57,000
347-Carrington tract	565	Scotland	Sandhills	12/3/2003	completed 2005	NHTF\$707, 137 and USFWS \$1,487,500
348-Duncan tract	115	Caswell	Caswell	12/3/2003	Switched to Baldwin	Wildlife Fund, CWMTF, EEP
349-Etheridge tract	200	Currituck	North River	12/3/2003	Inactive	NHTF, CWMTF, EEP
350-IP-Register King tract	340	Columbus	Columbus County	12/3/2003	Inactive	NHTF, CWMTF, EEP
351-Landino Farms tract	800	Tyrrell		12/3/2003	Sold	DU MARSH, NAWCA, Justice EEP
352-IP-Juniper Creek	19,000	Brunswick Columbus		12/3/2003	closed December 2007	TNC/IP package
353-Winnie Moore Bay Flatwoods	53	Columbus	Columbus County	12/3/2003	Completed, 2006	Wildlife fund \$43,700
354-Bear Garden	14, 256	Pender	Holly Shelter	12/3/2003	Completed, 2004	CWMTF \$2,365,00
355- Ahearn tract	40	Carteret	Croatan	3/3/2004	Completed, 2006	USFWS\$ 270,000, NHTF \$128,842
356- Bernhardt tract	245	Caldwell	Buffalo Cove	3/3/2004	Inactive	NHTF/CWMTF/EEP
357- Corbett	970	New Hanover	Cape Fear	3/3/2004	Completed, 2007	Donation
358- Marion Carter estate	1878	Burke	S. Mountains	3/3/2004	Completed, 2007	NHTF\$ 2,035,000/CWMTF \$1,171,355
359- Swartout tracts	11.3	Scotland	Sandhills	3/3/2004	Inactive	NHTF/CWMTF/EEP
360- Lewis tract	66.7	Carteret	New	3/3/2004	Sold	USFWS Coastal Wetlands
361 - Little Mountain tract		Surry	Mitchell River	3/3/2004	Completed, 2004	Gift
362- Gupton tract	172	Franklin	Shocco	5/14/2004	Completed	EEP, NHTF, Wildlife Fund
363- Buffalo Cove Ferguson	16.42	Wilkes	Buffalo Cove	5/14/2004	Completed	NHTF/CWMTF/EEP
364- Buffalo Cove Erby	80	Caldwell	Buffalo Cove	5/14/2004	Inactive	NHTF/CWMTF/EEP
365- Cashie River tracts (Barber-Coppersmith)	125 1350	Bertie	Chowan Swamp	5/14/2004	Completed, 2006	CWMTF \$3,000,000
366- Mackovich (Boy Scout) tract	100	Caswell	Caswell	5/14/2004	Completed	NHTF/CWMTF/EEP fund 32 acres
367- Table Rock Mountain tract	545	Mitchell	New	5/14/2004	completed, 2004	Gift
368- Griffin tract	532	Hertford	New	5/14/2004	Inactive	NHTF/CWMTF/EEP/PR
369-Edenton Depot tract	5	Chowan	N/A	10/3/2003	completed, 2004	Wildlife Fund
370 - Hamby	10	Caldwell	Buffalo Cove	7/14/2004	Currently not available	Wildlife Fund
371-Carter Heirs	48	Wake	Butner/Falls	7/14/2004	Inactive	Timber sale receipts, Wildlife fund, WEF
372-Wells	146	Pender	Holly Shelter	7/14/2004	bought by Coastal Land trust	EEP transfer from CLT
373-Hope valley Forest	342	Chatham	Jordan	7/14/2004	closed December 2010	NHTF/CWMTF/EEP
374-Ellis	67	Surry	Mitchell River	7/14/2004	State Property - Pending	Gift from Piedmont Land Cons.
375-Mason Mountain Wetland	25	Macon	Needmore	7/14/2004	NA	CWMTF transfer from LTLT, Sec. 6 \$251,500
376-Chalk	674	Richmond	Pee Dee	7/14/2004		NHTF/CWMTF/EEP
377-McFayden	53	Bladen	Suggs Mill Pond	7/14/2004	Completed, 2005	CWMTF, Wildlife fund, WEF
378-Owen	293	Bladen	Suggs Mill Pond	7/14/2004	Completed 2006	CWMTF, Wildlife fund, WEF

LAND ACQUISITIONS/ EASEMENTS/ DISPOSITIONS
(Division of Wildlife Management 4/13/11)

Color Key	
	Active & Funded
	Completed
	Inactive
	Active & Not Funded

<u>Reference No. and Project Name</u>	<u>Acres</u>	<u>County</u>	<u>Game Land</u>	<u>Date Approved</u>	<u>Current Status</u>	<u>Funding</u>
379-Brown	40.38	Carteret	New	7/14/2004	Sold	USFWS Coastal Wetland grant
380-University Garden	2700	Pamlico	New	7/14/2004	Inactive pending landowner	NHTF/CWMTF/EEP
381 - Light Ground Pocosin	1094	Pamlico	New	Legislature 7/04	Completed, July - 2004	Re allocation, wildlife fund
382 - Dickerson tract	5.9	Durham	Butner/Falls	8/25/2004	Completed January 2006	B/F TS Fund
383 - Leonard tract	40	Richmond	Sandhills	8/25/2004	Completed, 2005	Wildlife Fund, TS Fund, Sec. 6
384 - (FIA)Willamette tract	496	Moore	Sandhills	8/25/2004	Completed 2006	EEP \$290,098.50 and NHTF \$633,650
385 - Quaternary tract	1443	Onslow	Croatan	8/25/2004	closed April 2009	Wildlife Fund
386 - Wooten tract	22	Caldwell	Buffalo Cove	8/25/2004	closed December 2007	WEF
387 - Saddle Mountain tracts	462	Alleghany	Mitchell River	8/25/2004	Completed 2006	NHTF, CWMTF, EEP
388 - Howell Estate tract	610	Richmond	Pee Dee	10/6/2004	Completed, 2007	NHTF, CWMTF, EEP
389 - Bear Creek tracts	64	Burke	Pisgah	10/6/2004	Completed, 2006	NHTF, CWMTF, EEP
390-Kannapolis/Second Creek tract	2800	Rowan	New	10/6/2004	State Property - Pending	NHTF, CWMTF, EEP Canon Foundation \$100,000
391 - Price tract	40	Cumberland	New	10/6/2004	inactive	NHTF, CWMTF, EEP
392 - CCC Road (McNeilly) tract	57	Rutherford	S. Mountains	12/1/2004	State Property - Pending	wildlife fund
393 - Pension Fund tract	1,800	Montgomery	Uwharrie	12/1/2004	State Property - Pending	NHTF, CWMTF, EEP
394 - Upchurch/Williams tract	1,027	Hoke	Sandhills	12/1/2004	Complete 2006	NHTF\$1,217,000 CWMTF\$ 2,019,, EEP
395 - Thorofare Island tract	73	Pender	Cape Fear	12/1/2004	Closed 2007	NHTF, CWMTF, EEP
396 - Wells tract	146	Pender	Holly Shelter	12/1/2004	bought by Coastal Land trust	duplicate of 372
397 - Adirondack tract	2,736	Pender/Onslow	Holly Shelter	3/2/2005	NA	NHTF, CWMTF
398 - Corbett tract	3,677	Pender/Onslow	Holly Shelter	3/2/2005	inactive	NHTF, CWMTF
399 - Sherron tract	300	Hertford	Chowan Swamp	3/2/2005	Inactive	NHTF, CWMTF
400 - Colon Grandy tract	727	Currituck	North River	3/2/2005	Inactive	NHTF, CWMTF
401 Dysartville	3,300	McDowell	Hickorynut Mtn	3/2/2005	Inactive	NHTF, CWMTF, EEP
402 - Jack Story tract	75	Polk	Green River	3/2/2005	Complete 2005	Wildlife \$ 118,844
403 - Henson tract	3	Caldwell	Buffalo Cove	3/2/2005	State Property - Pending	Wildlife Fund
404 - Moeller tract	8	Caldwell	Buffalo Cove	3/2/2005	State Property - Pending	Wildlife Fund
405 - Linwood 2 tract	189	Davidson	Linwood	3/2/2005	inactive	NHTF, CWMTF, EEP, DU Marsh
406 - Milliken tract	2,800	Columbus	Columbus County	3/2/2005	Inactive	NHTF, CWMTF
407 - Roquist Pocosin tract	3,926	Bertie	Roanoke River	3/2/2005	State Property - Pending	transfer from EEP
408 - Dover Bay tract	3,100	Craven	Neuse River	3/2/2005	State Property - Pending	transfer from NCGTP
409 - Norwood tract	2,700	Johnston/Wake	New	3/2/2005	inactive	NHTF, CWMTF, EEP
410 - Baldwin tract	18	Caswell	Caswell	3/2/2005	Completed	Wildlife fund
411 - Cayton tract	1,000	Pamlico	New	3/2/2005	Inactive	NHTF, CWMTF, Wildlife fund
412 - Branch tracts	16.75	Robeson	Bullard& Branch	5/20/2005	Complete	Donation, misc from Wildlife fund
413 - Coweeta Creek tracts	48	Macon	Needmore	5/20/2005	Completed, August 2008	USFWS Recovery acq grant
414 - Jessup Millpond tract	1,173	Bladen	Suggs Mill Pond	5/20/2005	Closed	NHTF, CWMTF, EEP
415 - Boyd tract	1,312	Beaufort	New	5/20/2005	Inactive	NHTF, CWMTF, EEP
416 - J.D. Briley tract	547	Pitt	New	5/20/2005	Inactive, Sold	NHTF, CWMTF, EEP
417 - Marks Creek tract	1,460	Richmond	Pee Dee	7/13/2005	Inactive	NHTF, CWMTF, EEP

LAND ACQUISITIONS/ EASEMENTS/ DISPOSITIONS
(Division of Wildlife Management 4/13/11)

Color Key	
	Active & Funded
	Completed
	Inactive
	Active & Not Funded

<u>Reference No. and Project Name</u>	<u>Acres</u>	<u>County</u>	<u>Game Land</u>	<u>Date Approved</u>	<u>Current Status</u>	<u>Funding</u>
418 - Mountain Creek tracts	373	Richmond	Pee Dee	7/13/2005	inactive-sold	NHTF, CWMTF, EEP
419 - Sutton tract	205	Bertie	Roanoke River	7/13/2005	State Property - Pending	CWMTF, Wildlife fund
420 - Woodville(weyerhauser	383	Bertie	Roanoke River	7/13/2005	Closed December 2008	NHTF, CWMTF, EEP
421 - Queen's Branch tract	89	Macon	Needmore	7/13/2005	Completed 2006	USFWS sec 6 251,500 CWMTF 727,000
422 - Eller tract	238	Caldwell	Buffalo Cove	8/26/2005	Inactive	NHTF, CWMTF, EEP
423 - Garrou tract	89	Caldwell	Buffalo Cove	8/26/2005	Inactive	NHTF, CWMTF, EEP
424 - Chelsie Grose tract	89	Caldwell/Wilkes	Buffalo Cove	8/26/2005	Inactive	NHTF, CWMTF, EEP
425 - Mildred Grose tract	50	Caldwell/Wilkes	Buffalo Cove	8/26/2005	Inactive	NHTF, CWMTF, EEP
426 - James Hill tract	46	Wilkes	Buffalo Cove	8/26/2005	Inactive	NHTF, CWMTF, EEP
427 - Robert Hill tract	71.25	Wilkes	Buffalo Cove	8/26/2005	Inactive	NHTF, CWMTF, EEP
428 - Nemeth tract	196	Wilkes	Buffalo Cove	8/26/2005	Inactive	NHTF, CWMTF, EEP
429 - Hawkins tract	203	Caldwell	Buffalo Cove	8/26/2005	Inactive	NHTF, CWMTF, EEP
430 - Wilson tract	23.9	Richmond	Sandhills	8/26/2005	Completed, 2007	Wildlife Fund, NC Hab. Foundation
431 - James tract	377	Richmond	Sandhills	8/26/2005	State Property - Pending	NHTF, CWMTF, EEP, Sec 6 funds
432 - Mizell tract	600	Washington	New	8/26/2005	Inactive	NHTF, CWMTF, EEP
433 - Northbend tracts	578	Burke	New	8/26/2005	Inactive	NHTF, CWMTF, EEP
434 - Tolson Island tract	14	Hyde	New	8/26/2005	Inactive	CWMTF, Coastal Wetlands grant
435 - Jenkins tract	654	Granville	New	8/26/2005	inactive	NHTF, CWMTF, EEP
436 - Pederson tract	100	Swain	Needmore	8/26/2005	State Property - Pending	NHTF, CWMTF, EEP
437 - Turkey Quarter Island tract	1,465	Craven		10/5/2005	Closed	donation
438 - Charles Cooper Tract	22	Onslow		10/5/2005	State Property - Pending	NHTF, CWMTF, EEP
439 - Raby Bend tract	57	Swain	Needmore	10/5/2005	State Property - Pending	trade with LTLT
440 - Margaret Boyd tract	14.8	Scotland	Sandhills	12/5/2005	Inactive	Wildlife Fund
441 - McDuffie tract	1505	Tyrrell	New	12/5/2005	Inactive	CWMTF, NHTF, DU, Coastal Wetlands, NAWCA
443- Diaz Lot	1	Ashe	Three Top	3/1/2006	Closed	Wildlife Fund
444- Paschal tract	344	Bladen	Suggs Mill Pond	3/1/2006	State Property - Pending	NHTF, CWMTF, EEP
445- Kassab tract	55	Onslow	Stones Creek	3/1/2006	Closed March 2008	NHTF, CWMTF, DOD
446 - Sandy Mush tract	2600	Buncombe, Madison	Sandy Mush	3/1/2006	Completed	EEP
447 - Atkins	160.31	Bertie	Bertie	6/16/2006	State Property - Pending	Wildlife Fund
448 - Price	32	Ashe	Three Top	6/16/2006	State Property - Pending	Donation, misc from Wildlife fund
449 - Gilmore Teague	21.2	Buncombe	Sandy Mush	6/16/2006	State Property - Pending	CWMTF, EEP
450 - Craig Tweed	120	Buncombe	Sandy Mush	6/16/2006	State Property - Pending	CWMTF, EEP, NHTF
451 - Snelson	72	Madison	Sandy Mush	6/16/2006	NA	CWMTF, EEP, NHTF
452 - Graves	204.49	Caswell	Caswell	6/16/2006	Completed, 2006	CWMTF, EEP, PR
453 - River Bend	190	Caswell	Caswell	6/16/2006	State Property - Pending	Transfer from EEP
454 - McMillian	60	Caswell	Caswell	6/16/2006	Completed, 2007	PR funds and Wildlife Fund
455 - Huggins	790	Carteret	White Oak River	6/16/2006	Completed	Transfer from Coastal Federation
456 - Camp Knob	280	Cleveland	South Mtns.	6/16/2006	State Property - Pending	CWMTF, EEP, NHTF
457 - Mack Little	5	Columbus	Columbus County	6/16/2006	Completed, 2007	Donation
458 - WL Tate	90	Currituck	North River	6/16/2006	State Property - Pending	Donation, NHTF, CWMTF
459 - Rex Tillett	54.44	Dare	Roanoke Island	6/16/2006	State Property - Pending	Donation

LAND ACQUISITIONS/ EASEMENTS/ DISPOSITIONS
(Division of Wildlife Management 4/13/11)

Color Key	
	Active & Funded
	Completed
	Inactive
	Active & Not Funded

<u>Reference No. and Project Name</u>	<u>Acres</u>	<u>County</u>	<u>Game Land</u>	<u>Date Approved</u>	<u>Current Status</u>	<u>Funding</u>
460 - Bishop Road	690	Hyde	New Lake	6/16/2006	State Property - Pending	Transfer from EEP
461 - Fillipo	569	Onslow	Stones Creek	6/16/2006	State Property - Pending	NHTF, CWMTF, DOD
462 - RMK - Camp Davis	1228	Onslow	Holly Shelter	6/16/2006	State Property - Pending	NHTF, CWMTF, DOD
463 - Zeist	660	Orange	New	6/16/2006	Inactive	CWMTF, EEP, NHTF
464 - Quattlebaum	104.9	Polk	Green River	6/16/2006	Closed February 2008	trade for Green River land
465 - William Tillman	27.79	Richmond	Sandhills	6/16/2006	Inactive	CWMTF, EEP, NHTF
466 - Mullberry Mill Bog	40	Wilkes	WCA	6/16/2006	Closed September 2008	NHTF, CWMTF, EEP, Land trusts
467 - Hodgson Family	15	Davie	Hunting Creek	8/30/3006	Inactive	Wildlife Fund
468- Fisher	36	Scotland	Sandhills	8/30/3006	Inactive	CWMTF, EEP, NHTF
469 - Stallings (Turnagin bay)	1300	Carteret	New	3/1/2006	Completed - 2007	CWMTF USFWS COASTAL- 900,000
470 Norco	85	Buncombe	Sandy Mush	10/6/2006	State Property - Pending	Donation, misc from Wildlife fund
471 Aiken	46	Burke	South Mountains	10/6/2006	State Property - Pending	Wildlife Fund
472 Daniel Smith	12	Burke	South Mountains	10/6/2006	State Property - Pending	Wildlife Fund
473 Chapman	5	Burke	South Mountains	10/6/2006	State Property - Pending	Wildlife Fund
474 Michaels	1	Burke	South Mountains	10/6/2006	State Property - Pending	Wildlife Fund
475 Vitas	30	Rutherford	South Mountains	10/6/2006	State Property - Pending	Wildlife Fund
476 ALCOA	2000	Davidson, Rowan	Alcoa	10/6/2006	State Property - Pending	NHTF, CWMTF, EEP
477 Jones	51	Caswell	Caswell	10/6/2006	State Property - Pending	CWMTF
478 Englehart Airport	1140	Hyde	Gull Rock	10/6/2006	Not Available	NAWCA Funding
4879 Sewell	21	Onslow	Stones Creek	10/6/2006	Not Available	Military COPS
480 Pheasant Creek	123	Cleveland	South Mountains	10/6/2006	Sold	CWMTF, NHTF, EEP
481 Gull Island	73	Dare		10/6/2006	Closed July 2008	CWMTF, NHTF
482 Henry Tract	454	Carteret		10/6/2006	NA	Coastal Wetland Grant
483 Upper Tar River IP tracts	10,588	Warren, Franklin	Shocco Creek	12/2007	Closed December 2007	NHTF, CWMTF Wildlife Bond
484 Johnson's Landing IP tract	1,763	Bertie	Roanoke River	12/2007	Closed June 2007	NHTF, CWMTF Wildlife Bond
485 Lower Roanoke IP tracts	8,432	Halifax, Northampton	Roanoke River	12/2007	Closed December 2007	NHTF, CWMTF Wildlife Bond
486 Chowan River IP tracts	8,682	Hertford	Chowan Swamp	9/2008	Closed August 2008	NHTF, CWMTF Wildlife Bond
487 - John Winslow tract	467	Martin	Batchelor bay	12/6/2006	Inactive	NHTF, CWMTF, EEP
488 - Troy Greene tract	90	Gates	Chowan Swamp	12/6/2006	State Property - Pending	NHTF, CWMTF, EEP
489 - Killingsworth Farm tract	139	Jones	Chowan Swamp	12/6/2006	bought by military	NHTF, CWMTF, EEP
490 - Odum Prison Land	1,063	Northampton	Roanoke River	2/14/2007	Closed May 2009	Property Transfer
491 - Rachel Morton	204	Onslow	White Oak River	5/18/2007	Closed	CWMTF, DU Marsh, NAWCA
492 - Riverstone	18,600	Columbus	Waccamaw	5/18/2007	State Property - Pending	NHTF, CWMTF
493- Whitehurst-Devil's Garden	430	Craven	Neuse River	5/18/2007	Closed 12/11/08	NHTF, CWMTF
494 - Fulp Tract	227	Richmond	Misc	5/18/2007	State Property - Pending	CWMTF
495 - Lennon's Mill Pond	1,200	Robeson	Misc	5/18/2007	State Property - Pending	NHTF, CWMTF, DU Marsh
496 - Miller-Hufnagel	100	Ashe	Three Top	7/11/2007	closed July 2010	CWMTF, NAWCA
497 - Old Fayetteville Road South	54	Bladen	Suggs Mill Pond	7/11/2007	State Property - Pending	CWMTF
498 - Barnes & Goode tract	350	Granville	Misc	7/11/2007	State Property - Pending	CWMTF, FWS Section 6, Military Support act
499 - McCotter	440	Onslow	Misc	7/11/2007	Closed September 2008	NHTF, CWMTF, Section 6

LAND ACQUISITIONS/ EASEMENTS/ DISPOSITIONS
(Division of Wildlife Management 4/13/11)

Color Key	
	Active & Funded
	Completed
	Inactive
	Active & Not Funded

<u>Reference No. and Project Name</u>	<u>Acres</u>	<u>County</u>	<u>Game Land</u>	<u>Date Approved</u>	<u>Current Status</u>	<u>Funding</u>
500 - Weyerhaeuser - Onslow 22	1,200	Onslow	Misc	7/11/2007	Not Available	NHTF, CWMTF, Section 6
501 - Corbett Blossom	971	New Hanover	NE Cape Fear		acquired	Gift from TNC
502 - Leggett tract	75	Caswell	Caswell	8/29/2007	unavailable	CWMTF
503 - Dean Island	40	Macon	Needmore	8/29/2007	State Property - Pending	NHTF, CWMTF, FWS Sect 6
504 - Hamer tract	569	Richmond	Pee Dee	10/19/2007	State Property - Pending	NHTF, CWMTF, FWS Sect 6
505 - Snoddy tract	1	Henderson	Misc	10/19/2007	State Property - Pending	NHTF, CWMTF, FWS Sect 6
506 - Carpenter tracts	688	Scotland	Sandhills	12/5/2007	Closed August 2009	NHTF, CWMTF, FWS Sect 6, DOD
507 - Little Rose tract	500	Mitchell	Pisgah	12/5/2007	Closed July 2009	Donation/Transfer from CTNC/DCR
508 - Maple Prison Camp tract	289	Currituck	North River	12/5/2007	Closed December 2010	Re allocation from DOC
509- Thoroughfare Island tract	47	Currituck	North River	12/5/2007	State Property - Pending	Donation from TNC
510 - Pond Mountain	1850	Ashe		2/13/2008	Closed December 2010	NHTF, CWMTF
511- Whitehall Plantation	1430	Bladen		2/13/2008	Closed 2009	NHTF, CWMTF
512 - Wilkes Tract	115	Scotland	Sandhills	2/13/2008	Closed July 2009	NHTF
514 - New Hope Timber Tract	189	Caswell	Caswell	5/9/2008	State Property - Pending	NHTF, CWMTF
515 - President Tract	880	Hyde	Gull Rock	5/9/2008	Inactive	NHTF
516 - Leak-Wall Tract	1473	Richmond	Pee Dee	5/9/2008	State Property - Pending	NHTF, CWMTF
517 - Gullege-Sustainable Forestry	321	Richmond	Pee Dee	5/9/2008	State Property - Pending	NHTF, CWMTF
518 - Harmon Tract	238	Richmond, Scotland	Sandhills	7/9/2008	Closed December 2010	NHTF, CWMTF
519 - Johnson Tract	218	Ashe	New	7/9/2008	Closed July 2010	NHTF, CWMTF
520 - Elam Tract	72	Caldwell	New	7/9/2008	Closed December 2008	NHTF, CWMTF
521 - Lutz tract	650	Caldwell	New	10/19/2007	Closed May 2009	NHTF, CWMTF
522 - Myers Lot 676 Tract	0.5	Ashe	Three Top	8/27/2008	Closed october 2009	WRC
523 - Ducote Tract	7.5	Henderson	New	8/27/2008	Closed October 2010	NHTF, CWMTF
524 - Terry Tract	245	Rutherford	South Mountains	8/27/2008	closed May 2010	NHTF, CWMTF
525 - Carscadden Tract	4	Caswell	Caswell	10/3/2008	State Property - Pending	NHTF, CWMTF
526 - Wittig Tract	246	Edgecombe	Fishing Creek	10/3/2008	State Property - Pending	NHTF, CWMTF
527 - Island Creek Tract	1,846	Jones	Croatan	10/3/2008	Inactive	NHTF, CWMTF
528 - Blair Tract	2,100	Jones	Croatan	10/3/2008	Inactive	NHTF, CWMTF
529 - Rankin-Diggs Tract	785	Richmond	Pee Dee	10/3/2008	State Property - Pending	NHTF, CWMTF
530 - Hickorynut Mtn tract	8,000	McDowell	New	3/2/2005	State Property - Pending	NHTF, CWMTF, EEP
531 - Ingram Tract	1,200	Anson	Pee Dee	2/11/2009	State Property - Pending	NHTF, CWMTF
532 - Braun Tract	600	Ashe	Misc	2/11/2009	State Property - Pending	NHTF, CWMTF
533 - Sherill	205	Ashe	Three Top	2/11/2009	State Property - Pending	NHTF, CWMTF
534 - Bryant Lumber	567	Avery/McDowell	Pisgah	2/11/2009	State Property - Pending	NHTF, CWMTF
535 - Ryan Tract	709	Bladen	Misc	2/11/2009	State Property - Pending	NHTF, CWMTF
536 - Bear Pen Tract	1,340	Brunswick	Juniper Creek	2/11/2009	State Property - Pending	NHTF, CWMTF
537 - IP-Amici Group Tracts	8,300	Brunswick	Juniper Creek	2/11/2009	State Property - Pending	NHTF, CWMTF
538 - Jenrette Tract	1,827	Brunswick	Columbus County	2/11/2009	State Property - Pending	NHTF, CWMTF
539 - Lowland Tract 5098	208	Pamlico	Goose Creek	2/11/2009	State Property - Pending	NHTF, CWMTF
540 - Lowland Tracts 5100 and 5101	689	Pamlico	Goose Creek	2/11/2009	State Property - Pending	NHTF, CWMTF
541 - Atkinson Tract	1,616	Pender	Holly Shelter	2/11/2009	State Property - Pending	NHTF, CWMTF

LAND ACQUISITIONS/ EASEMENTS/ DISPOSITIONS
(Division of Wildlife Management 4/13/11)

Color Key	
	Active & Funded
	Completed
	Inactive
	Active & Not Funded

<u>Reference No. and Project Name</u>	<u>Acres</u>	<u>County</u>	<u>Game Land</u>	<u>Date Approved</u>	<u>Current Status</u>	<u>Funding</u>
542 - Green Pig Tract	21	Polk	Green River	2/11/2009	State Property - Pending	NHTF, CWMTF
543 - King Mountain Tract	190	Randolph	Uwharrie	2/11/2009	Closed December 2010	NHTF, CWMTF
544 - Martin Marietta tract	525	Scotland	Sandhills	2/11/2009	State Property - Pending	NHTF, CWMTF
555 - Fitch Tract	207	Caswell	Caswell	3/4/2009	State Property - Pending	NHTF, CWMTF
556 - Hogan tract	203	Richmond	Sandhills	3/4/2009	State Property - Pending	NHTF, USFWS section 6
548 - Bigelow Tract	5	Caswell	Caswell	5/13/2009	closed 12/2009	NWTF, NCWHF
549 - Cooper Tract	22	Onslow	Stones Creek	5/13/2009	State Property - Pending	NHTF, CWMTF, NAVY
550 - Peterson Tract	1	Ashe	Three Top	7/8/2009	closed	Donation
551 - Havic & Noblitt Tracts	1,000	Camden	North River	7/8/2009	Inactive	Donation
552 - Glenn Futrell Tract	381	Dare	New	8/26/2009	closed December 2009	Donation
553 - Bob's Pocket Wilderness	2,426	McDowell/Rutherford	New	10/7/2009	State Property - Pending	Donation
554 - Crosshairs Investment tract	1,197	Bladen	New	12/2/2009	State Property - Pending	NHTF, CWMTF, NAWCA, EEG, EEP
555 - Fontaine & Goad tracts	230	Granville	Butner/Falls	2/10/2010	State Property - Pending	NHTF, CWMTF
556 - Selma Ray tract	17	Wilkes	Thurmond Chatham	2/10/2010	State Property - Pending	PR funds
557 - City of Hamlet tract	19	Richmond	Sandhills	2/10/2010	closed 10/2010	Mitigation funds
558 - DOA Dredge Islands	135	Brunswick	New	2/10/2010	State Property - Pending	NA reallocation
559 - Smith Creek Tract	923	Granville	Butner/Falls	3/3/2010	State Property - Pending	NHTF, CWMTF Bargain sale, Private funding
560 - Brown's Island	165	Carteret	New	3/3/2010	State Property - Pending	USFWS Coastal Wetlands, NAWCA Grant
561 - Ludford Tract	160	Tyrrell	Aligator River	5/12/2010	State Property - Pending	NHTF, CWMTF
562 - Barge Landing Tract	3	Pamlico	Goose Creek	7/7/2010	State Property - Pending	Reallocation
563 - Godwin Tract	62	Pender	Holly Shelter	7/7/2010	State Property - Pending	NHTF
564 - Maple Prison (northern tract)	325	Currituck	North River	7/7/2010	Closed January 2010	Reallocation
565 - Silbert tract	133	Polk	Green River	8/25/2010	State Property - Pending	NHTF, CWMTF
566 - Joe Carpenter Tract	16	Scotland	Sandhills	8/25/2010	State Property - Pending	NHTF, CWMTF, ACUB, USFWS
567 - Richlands Mountain Tract	29	Rutherford	South Mountains	8/25/2010	State Property - Pending	NHTF, CWMTF
568 - Mosteller Tract	1	Ashe	Three Top	8/25/2010	State Property - Pending	Donation
569 - Sam Casey Tract	6	Pender	Cape Fear	1/13/2011	State Property - Pending	Donation
570 - Tar River Timber Co tracts	212	Warren	Shocco Creek	1/13/2011	State Property - Pending	CWMTF, USFWS section 6
571 - Voice of America tract	2,822	Beaufort	New	3/10/2011	State Property - Pending	Reallocation
572 - PLC tracts	122	Alleghany, Surry	Mitchell River	3/10/2011	State Property - Pending	WRC

EXHIBIT F

May 12, 2011

North Carolina Wildlife Resources Commission Land Acquisition Investigation Form

Date: 4-11-2011

Tract Name: Chinquapin Trout Lake (Trout Lake)

Acreage: 4.0 acres (2.0 acres for pond, 2.0 acres for surrounding land)

County: Ashe

Advertised Purchase Amount: N/A

Based on Appraisal: Yes No

Contact: John Barbour (State Property Office)

Phone: 919-807-4682

Address: 1321 Mail Service Center
Raleigh, NC 27699-1321

Status: High Interest Moderate Interest Low Interest No Interest

Grant Potential: NHTF CWMTF Other

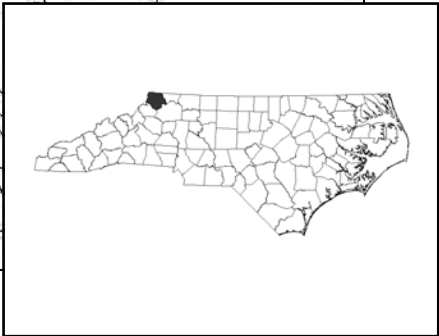
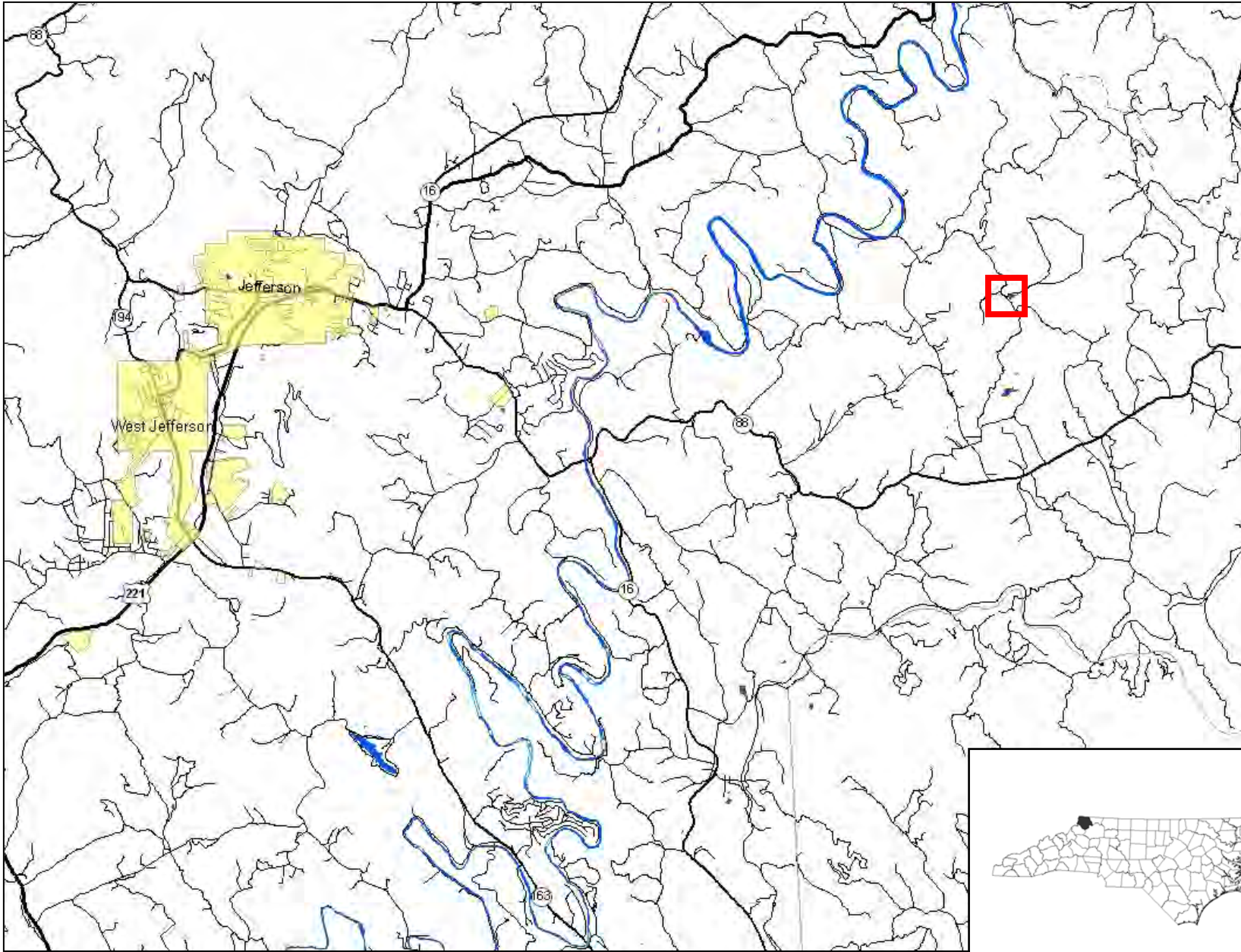
Resource Potential (Brief): Trout Lake is a 2-acre impoundment located approximately 7 miles east of Jefferson in Ashe County, NC. Trout Lake is owned by the Ashe County Wildlife Club and the Commission has managed the lake for public fishing through a Memorandum of Agreement with the club since 1993. Trout Lake is currently the only impoundment in the state managed with Delayed Harvest trout regulations, which in addition to providing fishing opportunities for the general angling public, makes it an ideal fishery for elderly or handicapped anglers. The Commission built a pier and handicapped-accessible parking area for anglers in 1995, and to ensure that the lake remained open to the public, the Commission repaired the dam of Trout Lake in 2010 after a dam safety issue was identified. The Ashe County Wildlife Club is now interested in formalizing our working relationship by entering into a lease agreement with the Commission. The lease would be a no-cost lease or involve a minimal amount of compensation (i.e. \$1/year). Since the Commission has already built angler facilities and repaired the dam, no additional expenditures would be required by the agency to enter into this agreement.

Access Assessment: Direct road access to property at SR1307 bridge

Game Lands Program Potential: Yes No

Recommendation: Pursue Acquisition Defer Do Not Pursue Acquisition

Map Attached: Yes No



Location of Trout Lake in relation to Jefferson, NC.



Approximate boundaries of land to be included in proposed Trout Lake lease agreement.

EXHIBIT G-1

May 12, 2011

PROPOSED CHANGES IN INLAND FISHING REGULATIONS TO ESTABLISH SIZE AND CREEL LIMITS BY REFERENCE TO MARINE FISHERIES COMMISSION REGULATIONS FOR SALTWATER FISHES CAUGHT IN INLAND WATERS

SUMMARY OF PUBLIC COMMENTS RECEIVED FROM LOCAL PUBLIC HEARINGS, THE WRC INTERNET PORTAL AND WRITTEN CORRESPONDENCE

Type of Comment	Total Number Received	Agree	Disagree	Other
Public Hearing	6	5	—	1
Online	10	4	5	1
Letter	1	1	—	—

A. Public Hearing Comments

1. District 1 Public Hearing March 30 - *Supports*.
2. District 2 Public Hearing March 29 - Did not understand why the WRC did not take action sooner. MFC took immediate action to close the fishery following cold kill.
3. District 2 Public Hearing March 29 - Why did the rules originally change for speckled trout from 10 to 6 on the creel? Or the increase in the length limit? Proposed changing the coastal-inland boundary on Vandemere Creek, Pamlico County. Questioned commercial regulations.
4. District 2 Public Hearing March 29 - Why can this change not be implemented sooner? Thinks WRC should have been implemented it sooner.
5. District 2 Public Hearing March 29 - *Good proposal*; concerned that it is tied to MFC. Feels like MFC is dominated by commercial fishing interests. WRC needs authority to close area, season, etc.
6. District 4 Public Hearing March 28 - Is there a way to differentiate Coastal, Joint, and Inland Waters? Thinks this rule proposal is a good idea. Is in favor of the use of hand-cranking devices to remove catfish from the river; does not want to see it repealed.

B. Online Comments (presented as submitted)

1. Online March 4 - "I generally support the changes proposed for flounder, sea trout, and red drum. However I propose two modifications to the proposal: One is make gray sea trout a game fish and two is add black drum to the list. Occasionally black drum are found in brackish water and in freshwater areas. Thank you for letting me comment."
2. Online March 6 - "I think most of us understand the need to grow the size of these fisheries, Commercial and Sportsman alike but I believe Commercial fishing takes the most fish. Am I wrong? Also, do you anticipate increasing the size limit for stripers caught in the sound? Thanks 5444649 Out of State license number...by the way, am I excluded from fishing the roanoke river fishing for striper and shad? Do I need to purchase another lic.? If too busy don't answer, I understand and will try to find out elsewhere on your site but hasn't jumped out at me yet. Thanks Again!!!"
3. Online March 6 - "I am opposed to the adoption of any rule which incorporates any regulation made by the NCMFC. After many years at the helm, it continues the management of our fish stocks for the primary benefit of the commercial industry only. I, and many others, have contacted our legislators to ask to have the spotted sea trout, as well as other species, removed from the jurisdiction of the MFC. Please do not defer to them."
4. Online March 8 - "I am opposed to the adoption of any rule which incorporates any regulation made by the NCMFC. After many years at the helm, it continues the management of our fish stocks for the primary benefit of the commercial industry only. I, and many others, have contacted our legislators to ask to have the spotted sea trout, as well as other species, removed from the jurisdiction of the MFC. Please do not defer to them."
5. Online March 8 - "I am opposed to the adoption of any rule which incorporates any regulation made by the NCMFC. After many years at the helm, it continues the management of our fish stocks for the primary benefit of the commercial industry only. I, and many others, have contacted our legislators to ask to have the spotted sea trout, as well as other species, removed from the jurisdiction of the MFC. Please do not defer to them. The MFC has not established their past decision making to anything other than the commercial industry. The way the MFC handled the rock fish mass death is evident that they are never going to show any impartial decision making."
6. Online March 8 - "I am strongly opposed to the adoption of any rule which incorporates any regulation made by the NCMFC. After many years at the helm, it continues the management of our fish stocks for the primary benefit of the commercial industry only. I, and many others, have contacted our legislators to ask to have the spotted sea trout, as well as other species, removed from the jurisdiction of the MFC. Please do not defer to them. I feel the NCWRC does a great job at managing our states wildlife, and I feel it is in the citizens of North Carolina interest for the NCWRC to continue to make the regulation on our inland fisheries. Thank you"
7. Online March 11 and 28 - "Gentlemen, As inland waters aren't subject to commercial fishing pressure, I feel that recreational anglers should not be penalized by the reduced

bag and size limits that apply to coastal and joint waters as well as seasonal closures. By having different rules for inland waters, recreational anglers are given more of their fair share of the resource. By having different rules of inland waters, it makes recreational anglers more aware of any commercial fishing encroachment. Regards,” and “Gentlemen, There is simply nothing confusing about inland fishing regulations for those who are literate. When you look at the rest of inland fishing regulations that vary from river to river and lake to lake just how confusing are they? Maybe we should just have blanket regulations for all of inland fishing to accommodate those who are too dumb to read. Perhaps the people who can't read or comprehend the fishing regulations or realize which body of water they are on should find a simpler sport to participate in. Confusion isn't an excuse for not knowing the our game laws. Regards,”

8. Online March 30 - “As an avid "saltwater" inshore fisherman I agree that managing the species as outlined in the proposed changes makes alot of sense. It will prevent the confusion that often exists in "freshwater" areas. I just hope redfish and speckled trout are provided gamefish status soon! Thanks for consideration of my opinion.”
9. Online April 2 - “Would you please define Joint or Coastal fishing waters? In particular “joint”. What I am trying to have clarified is with the recent rule being implemented preventing the harvest of Speckled Trout, does this rule apply to Speckled Trout caught in fresh water? Is fresh water defined as a part of “joint fishing waters”? Basically, can a speckled trout caught in fresh water be harvested? Thanks for any help clarifying this.”
10. Online April 18 - “My name is Donnie Ross and I'm from Pitt County and I want to vote yes to the proposed changes by the NC Wildlife Commission on the Speckle Trout, Puppy Drum, Flounder, Gray Trout, and all the rest. to follow the Marine Fisheries Regulations.”

C. Letter

1. Letter received April 4 from Louis B. Daniel III, Director of N.C. Division of Marine Fisheries - The Division of Marine Fisheries fully supports the proposed rule changes with two clarifications to the proposed rule text: 1) the proposed rule applies to only recreational seasons, size limits and creel limits and 2) proclamations are issued by the Fisheries Director. See attached letter.

EXHIBIT G-2

May 12, 2011

PROPOSED CHANGES IN INLAND FISHING REGULATIONS TO ESTABLISH SIZE AND CREEL LIMITS BY REFERENCE TO MARINE FISHERIES COMMISSION REGULATIONS FOR SALTWATER FISHES CAUGHT IN INLAND WATERS RECOMMENDED BY AGENCY STAFF FOR ADOPTION

Sea Trout (spotted or speckled), Flounder, and Red Drum

- 1) Establish seasons, size limits and creel limits in inland fishing waters by referencing those regulations established by the Marine Fisheries Commission rule or proclamation in adjacent joint or coastal fishing waters.

Amend the following rule:

15A NCAC 10C .0305 OPEN SEASONS: CREEL AND SIZE LIMITS (pages 2 and 6)

Gray Trout (weakfish)

- 2) Establish seasons, size limits and creel limits in inland fishing waters by referencing those regulations established by the Marine Fisheries Commission rule or proclamation in adjacent joint or coastal fishing waters.

Amend the following rules:

15A NCAC 10C .0305 OPEN SEASONS: CREEL AND SIZE LIMITS (pages 3 and 6)

15A NCAC 10C .0401 MANNER OF TAKING NONGAME FISHES: PURCHASE AND SALE (page 8)

1 **15A NCAC 10C .0305 OPEN SEASONS: CREEL AND SIZE LIMITS**

2 (a) Generally. Subject to the exceptions listed in Paragraph (b) of this Rule, the open seasons and creel and size
 3 limits are as indicated in the following table:

4	5	6	7	8
	DAILY CREEL	MINIMUM		
6	LIMITS	SIZE LIMITS		OPEN SEASON
8				Mountain Trout:
9	Wild Trout	4	7 in.	ALL YEAR
10	Waters			(exc. (3))
11	Hatchery Sup-	7	None	All year, except
12	ported Trout	(exc. (3))	(exc. (3))	March 1 to 7:00 a.m.
13	Waters and			on first Saturday
14	undesignated			in April
15	waters			(exc. (3))
16	Muskellunge	1	42 in.	ALL YEAR
17	Pickereel: Chain	None	None	ALL YEAR
18	and Redfin			
19	Walleye	8	None	ALL YEAR
20		(exc. (9))	(exc. (9))	
21	Sauger	8	15 in.	ALL YEAR
22	Black Bass:			
23	Largemouth	5	14 in.	ALL YEAR
24		(exc. (21))	(exc. (8,10&21))	(exc. (17))
25	Smallmouth	5	12 in.	ALL YEAR
26	and Spotted	(exc.(21))	(exc. (8,10&21))	
27	Roanoke and Rock Bass	None	None	ALL YEAR
28		(exc. (24))	(exc. (24))	
29	White Bass	25	None	ALL YEAR
30	Sea Trout (Spotted	10 (exc. (19))	14 in. (exc. (19))	ALL YEAR (exc. (19))
31	or Speckled)			
32	Flounder	8 (exc. (19))	14 in. (exc. (19))	ALL YEAR (exc. (19))
33	Red drum (channel	1 (exc. (19))	18 in. (exc. (19))	ALL YEAR (exc. (19))
34	bass, red fish,			
35	puppy drum)			
36	Striped Bass	8 aggregate	16 in.	ALL YEAR
37	and their			

1	hybrids	(excs. 1,2,5,6,11,&13)	(excs.1,2,5,6,11&13)	(excs. 6,13&15)
2	(Morone Hybrids)			
3	Shad: (American	10 aggregate	None	ALL YEAR
4	and hickory)	(exc. (22))		(exc. (18))
5	Kokanee Salmon	7	None	ALL YEAR
6	Crappie and	None	None	ALL YEAR
7	sunfish	(excs. 4,12&16)	(exc. (12))	(exc. (4))
8				
9				
10	NONGAME FISHES	None	None	ALL YEAR
11		(excs. 14,20,23&25)	(excs. 14,20,23&25)	(exc. (7) <u>7</u> &25)

12 (b) Exceptions

- 13 (1) In the Dan River upstream from its confluence with Bannister River to the Brantly Steam Plant
14 Dam and in John H. Kerr Reservoir the creel limit on striped bass and Morone hybrids is two in
15 the aggregate and the minimum size limit is 26 inches from October 1 through May 31. From
16 June 1 through September 30 the daily creel limit on striped bass and Morone hybrids is four in
17 aggregate with no minimum size limit.
- 18 (2) In the Cape Fear River upstream of Buckhorn Dam and the Deep and Haw rivers to the first
19 impoundment and in B. Everett Jordan Reservoir the creel limit on striped bass and Morone
20 hybrids is four in the aggregate and the minimum size limit is 20 inches. In Lake Gaston and
21 Roanoke Rapids Reservoir the creel limit on striped bass and Morone hybrids is four in aggregate
22 with a minimum size limit of 20 inches from October 1 through May 31 and no minimum size
23 limit from June 1 through September 30. In Lake Norman the creel limit on striped bass and
24 Morone hybrids is four in aggregate with a minimum size limit of 16 inches from October 1
25 through May 31 and no minimum size limit from June 1 through September 30.
- 26 (3) In designated public mountain trout waters the season for taking all species of fish is the same as
27 the trout fishing season. There is no closed season on taking trout from Linville River within
28 Linville Gorge Wilderness Area (including tributaries), Catawba River from Muddy Creek to the
29 City of Morganton water intake dam, and the impounded waters of power reservoirs and
30 municipally-owned water supply reservoirs open to the public for fishing.
- 31 (4) On Mattamuskeet Lake, special federal regulations apply.
- 32 (5) In the inland fishing waters of Neuse, Pungo and Tar Pamlico rivers and their tributaries extending
33 upstream to the first impoundment of the main course on the river or its tributaries, and in all other
34 inland fishing waters east of Interstate 95, subject to the exceptions listed in this Paragraph, the
35 daily creel limit for striped bass and their hybrids is two fish in aggregate. The minimum length
36 limit is 18 inches and no striped bass or striped bass hybrids between the lengths of 22 inches and
37 27 inches may be possessed. In these waters, the season for taking and possessing striped bass is

1 closed from May 1 through September 30. In the inland fishing waters of the Cape Fear River and
2 its tributaries, the season for taking and possessing striped bass is closed year-round. In the Pee
3 Dee River and its tributaries from the South Carolina line upstream to Blewett Falls Dam, the
4 season for taking and possessing striped bass and their hybrids is open year-round, the daily creel
5 limit is three fish in aggregate and the minimum length limit is 18 inches.

6 (6) In the inland and joint fishing waters [as identified in 15A NCAC 10C .0107(1)(e)] of the
7 Roanoke River Striped Bass Management Area, which includes the Roanoke, Cashie, Middle and
8 Eastmost rivers and their tributaries, the open season for taking and possessing striped bass and
9 their hybrids is March 1 through April 30 from the joint-coastal fishing waters boundary at
10 Albemarle Sound upstream to Roanoke Rapids Lake dam. During the open season the daily creel
11 limit for striped bass and their hybrids is two fish in aggregate, the minimum size limit is 18
12 inches. No fish between 22 inches and 27 inches in length shall be retained in the daily creel limit.
13 Only one fish larger than 27 inches may be retained in the daily creel limit.

14 (7) See 15A NCAC 10C .0407 for open seasons for taking nongame fishes by special devices.

15 (8) The maximum combined number of black bass of all species that may be retained per day is five
16 fish, no more than two of which may be smaller than the applicable minimum size limit. The
17 minimum size limit for all species of black bass is 14 inches, with no exception in Lake Luke
18 Marion in Moore County, Reedy Creek Park lakes in Mecklenburg County, Lake Rim in
19 Cumberland County, Lake Raleigh in Wake County, Randleman Reservoir in Raudolph and
20 Guilford counties, Roanoke River downstream of Roanoke Rapids Dam, Tar River downstream of
21 Tar River Reservoir Dam, Neuse River downstream of Falls Lake Dam, Haw River downstream
22 of Jordan Lake Dam, Deep River downstream of Lockville Dam, Cape Fear River, Waccamaw
23 River downstream of Lake Waccamaw Dam, the entire Lumber River including Drowning Creek,
24 in all their tributaries, and in all other public fishing waters east of Interstate 95 (except Tar River
25 Reservoir in Nash County), South Yadkin River downstream of Cooleemee Dam, Yadkin-Pee Dee
26 River from Idols Dam to the South Carolina State line including High Rock Lake, Tuckertown
27 Lake, Badin Lake, Falls Lake, Lake Tillery and Blewett Falls Lake. In and west of Madison,
28 Buncombe, Henderson and Polk Counties and in designated public mountain trout waters the
29 minimum size limit is 12 inches. In Cane Creek Lake in Union County, and Buckhorn Reservoir
30 in Wilson and Nash counties the minimum size limit for largemouth bass is 16 inches, with no
31 exception. In Lake Phelps and Shearon Harris Reservoir no black bass between 16 and 20 inches
32 shall be possessed. In Lake Norman the minimum size limit for black bass is 14 inches.

33 (9) A minimum size limit of 15 inches applies to walleye taken from Lake James and its tributaries,
34 and the daily creel limit for walleye is four fish in Linville River upstream from the NC 126 bridge
35 above Lake James.

36 (10) The minimum size limit for all black bass, with no exception, is 18 inches in Lake Thom-A-Lex in
37 Davidson County.

- 1 (11) In all impounded inland waters and their tributaries, except those waters described in Exceptions
2 (1) and (4), the daily creel limit of striped bass and their hybrids may include not more than two
3 fish of smaller size than the minimum size limit.
- 4 (12) A daily creel limit of 20 fish and a minimum size limit of 10 inches apply to crappie in B. Everett
5 Jordan Reservoir and in the Roanoke River and its tributaries downstream of Roanoke Rapids dam
6 and in the Cashie, Middle, and Eastmost rivers and their tributaries. A daily creel limit of 20 fish
7 and a minimum size limit of eight inches apply to crappie in the following waters: all public
8 waters west of Interstate 77, South Yadkin River downstream of Cooleemee Dam, Yadkin-Pee
9 Dee River from Idols Dam to the South Carolina State line including High Rock Lake,
10 Tuckertown Lake, Badin Lake, Falls Lake, Lake Tillery, and Blewett Falls Lake, Lake Norman,
11 Lake Hyco, Lake Ramseur, Cane Creek Lake, Tar River downstream of Tar River Reservoir Dam,
12 Neuse River downstream of Falls Lake Dam, Haw River downstream of Jordan Lake Dam, Deep
13 River downstream of Lockville Dam, Cape Fear River, Waccamaw River downstream of Lake
14 Waccamaw Dam, the entire Lumber River including Drowning Creek, in all their tributaries, and
15 in all other public fishing waters east of Interstate 95, except Tar River Reservoir in Nash County,
16 Sutton Lake in New Hanover County, and Roanoke River and tributaries below Roanoke Rapids
17 dam, as listed above. In Buckhorn Reservoir in Wilson and Nash counties a daily creel limit of 20
18 fish applies to crappie.
- 19 (13) In designated inland fishing waters of Roanoke Sound, Croatan Sound, Albemarle Sound, Chowan
20 River, Currituck Sound, Alligator River, Scuppernong River, and their tributaries (excluding the
21 Roanoke River and Cashie River and their tributaries), striped bass fishing season, size limits and
22 creel limits are the same as those established by rules or proclamations of the Marine Fisheries
23 Commission in adjacent joint or coastal fishing waters.
- 24 (14) Size and creel limits on regulated areas, including Community Fishing Areas, Public Fishing
25 Areas, and other cooperatively managed public waters shall be posted at each area, as specified in
26 15A NCAC 10E .0103.
- 27 (15) The Executive Director may, by proclamation, suspend or extend the hook-and-line season for
28 striped bass in the inland and joint waters of coastal rivers and their tributaries. It is unlawful to
29 violate the provisions of any proclamation issued under this authority.
- 30 (16) In Roanoke River downstream of Roanoke Rapids Dam, Tar River downstream of Tar River
31 Reservoir Dam, Neuse River downstream of Falls Lake Dam, Haw River downstream of Jordan
32 Lake Dam, Deep River downstream of Lockville Dam, Cape Fear River, Waccamaw River
33 downstream of Lake Waccamaw Dam, the entire Lumber River including Drowning Creek, in all
34 their tributaries, and in all other public fishing waters east of Interstate 95, except Tar River
35 Reservoir in Nash County, the daily creel limit for sunfish is 30 in aggregate, no more than 12 of
36 which shall be redbreast sunfish.
- 37 (17) In Sutton Lake, no largemouth bass shall be possessed from December 1 through March 31.

- 1 (18) The season for taking American and hickory shad with bow nets is March 1 through April 30.
- 2 (19) ~~No red drum greater than 27 inches in length may be possessed.~~ In inland fishing waters, sea trout
3 (spotted or speckled), flounder, and red drum recreational seasons, size limits and creel limits are
4 the same as those established by Marine Fisheries Commission rule or proclamations issued by the
5 Fisheries Director in adjacent joint or coastal fishing waters.
- 6 (20) No person shall take or possess herring (alewife and blueback) that are greater than six inches in
7 length from the inland fishing waters of coastal rivers and their tributaries including Roanoke
8 River downstream of Roanoke Rapids Dam, Tar River downstream of Rocky Mount Mill Dam,
9 Neuse River downstream of Milburnie Dam, Cape Fear River downstream of Buckhorn Dam, Pee
10 Dee River downstream of Blewett Falls Dam, the entire Lumber River including Drowning Creek,
11 in all their tributaries, and in all other inland fishing waters east of Interstate 95.
- 12 (21) In the Alleghany County portion of New River downstream of Fields Dam (Grayson County,
13 Virginia) no black bass between 14 and 20 inches in length shall be possessed and only one black
14 bass greater than 20 inches may be possessed in the daily creel limit. No minimum size limit
15 applies to black bass less than 14 inches in length in this section of New River.
- 16 (22) In the inland waters of Roanoke River and its tributaries, the daily creel limit for American and
17 hickory shad is 10 in aggregate, only one of which may be an American shad. In Roanoke Rapids
18 Reservoir, Lake Gaston and John H. Kerr Reservoir, no American shad may be possessed.
- 19 (23) In Lake Norman and Badin Lake the daily creel limit for blue catfish greater than 32 inches in
20 length is one fish.
- 21 (24) In all public fishing waters east of Interstate 77, the minimum length for Roanoke and rock bass is
22 8 inches and the daily creel limit is two fish in aggregate.
- 23 (25) ~~In inland fishing waters the minimum length for gray trout (weakfish) is 12 inches and the daily~~
24 ~~creel limit is one fish.~~ In inland fishing waters, gray trout (weakfish) recreational seasons, size
25 limits and creel limits are the same as those established by Marine Fisheries Commission rule or
26 proclamations issued by the Fisheries Director in adjacent joint or coastal fishing waters.

27

28 *History Note: Authority G.S. 113-134; 113-292; 113-304; 113-305;*
29 *Eff. February 1, 1976;*
30 *Temporary Amendment Eff. May 10, 1990, for a period of 180 days to expire on November 1,*
31 *1990;*
32 *Temporary Amendment Eff. May 22, 1990, for a period of 168 days to expire on November 1,*
33 *1990;*
34 *Temporary Amendment Eff. May 1, 1991, for a period of 180 days to expire on November 1, 1991;*
35 *Amended Eff. July 1, 1994; July 1, 1993; October 1, 1992;*
36 *Temporary Amendment Eff. December 1, 1994 for a period of 180 days or until the permanent*
37 *rule becomes effective, whichever is sooner;*

1 *Amended Eff. July 1, 1998; July 1, 1997; July 1, 1996; July 1, 1995;*
2 *Temporary Amendment Eff. November 1, 1998;*
3 *Amended Eff. April 1, 1999;*
4 *Temporary Amendment Eff. July 1, 1999;*
5 *Amended Eff. July 1, 2000;*
6 *Temporary Amendment Eff. July 1, 2001;*
7 *Temporary Amendment Eff. March 8, 2002 [This rule replaces the rule proposed for permanent*
8 *amendment effective July 1, 2002 and approved by RRC in May 2001];*
9 *Amended Eff. August 1, 2002 (approved by RRC in April 2002);*
10 *Temporary Amendment Eff. June 1, 2003;*
11 *Amended Eff. June 1, 2004 (this amendment replaces the amendment approved by RRC on July*
12 *17, 2003);*
13 *Amended Eff. May 1, 2009; July 1, 2008; May 1, 2008; May 1, 2007; May 1, 2006; June 1, 2005.*
14 *Amended Eff. August 1, 2010*
15 *Amended Eff. August 1, 2011*

1 **15A NCAC 10C .0401 MANNER OF TAKING NONGAME FISHES: PURCHASE AND SALE**

2 (a) Except as permitted by the rules in this Section, it is unlawful to take nongame fishes from the inland fishing
3 waters of North Carolina in any manner other than with hook and line or grabbling. Nongame fishes may be taken
4 by hook and line or grabbling at any time without restriction as to size limits or creel limits, with the following
5 exceptions:

- 6 (1) Blue crabs shall have a minimum carapace width of five inches (point to point) and it is unlawful
7 to possess more than 50 crabs per person per day or to exceed 100 crabs per vessel per day.
- 8 (2) No person shall take or possess herring (alewife and blueback) that are greater than six inches in
9 length from the inland fishing waters of coastal rivers and their tributaries including Roanoke
10 River downstream of Roanoke Rapids Dam, Tar River downstream of Rocky Mount Mill Dam,
11 Neuse River downstream of Milburnie Dam, Cape Fear River downstream of Buckhorn Dam, Pee
12 Dee River downstream of Blewett Falls Dam, the entire Lumber River including Drowning Creek,
13 and in all other inland fishing waters east of Interstate 95.
- 14 (3) Grass carp shall not be taken or possessed on Lake James, Lookout Shoals Lake, Lake Norman,
15 Mountain Island Reservoir and Lake Wylie, except that one fish per day may be taken by bow and
16 arrow.
- 17 (4) No trotlines or set-hooks shall be used in the impounded waters located on the Sandhills Game
18 Land or in designated public mountain trout waters.
- 19 (5) In Lake Waccamaw, trotlines or set-hooks may be used only from October 1 through April 30.
- 20 (6) ~~The minimum size limit for gray trout (weakfish) is 12 inches and the daily creel limit is one fish.~~
21 In inland fishing waters, gray trout (weakfish) recreational seasons, size limits and creel limits are
22 the same as those established by Marine Fisheries Commission rule or proclamations issued by the
23 Fisheries Director in adjacent joint or coastal fishing waters.

24 (b) The season for taking nongame fishes by other hook and line methods in designated public mountain trout
25 waters is the same as the trout fishing season.

26 (c) Nongame fishes, except alewife and blueback herring, excluding those less than six inches in length collected
27 from Kerr Reservoir (Granville, Vance, and Warren counties), blue crab, and bowfin, taken by hook and line,
28 grabbling or by licensed special devices may be sold. Eels less than six inches in length may not be taken from
29 inland waters for any purpose.

30 (d) Freshwater mussels, including the Asiatic clam (*Corbicula fluminea*), may only be taken from impounded
31 waters, except mussels shall not be taken in Lake Waccamaw and in University Lake in Orange County. It is
32 unlawful to possess more than 200 freshwater mussels.

33 (e) Size and creel limits as set in this Rule on regulated areas, including Community Fishing Areas, Public Fishing
34 Areas, and other cooperatively managed public waters shall be posted at each area, as specified in 15A NCAC 10E
35 .0103.

36 (f) In Lake Norman and Badin Lake, the daily creel limit for blue catfish greater than 32 inches is one fish.

37

1 *History Note: Authority G.S. 113-134; 113-272; 113-292;*
2 *Eff. February 1, 1976;*
3 *Amended Eff. July 1, 1994; July 1, 1993; May 1, 1992;*
4 *Temporary Amendment Eff. December 1, 1994;*
5 *Amended Eff. July 1, 1998; July 1, 1996; July 1, 1995;*
6 *Temporary Amendment Eff. July 1, 1999;*
7 *Amended Eff. July 1, 2000;*
8 *Temporary Amendment Eff. July 1, 2002; July 1, 2001;*
9 *Amended Eff. August 1, 2002 (approved by RRC on 06/21/01 and 04/18/02);*
10 *Temporary Amendment Eff. June 1, 2003;*
11 *Amended Eff. May 1, 2004 (this amendment replaces the amendment approved by RRC on July 17,*
12 *2003);*
13 *Amended Eff. May 1, 2009; May 1, 2008; May 1, 2007; May 1, 2006; June 1, 2005.*
14 *Amended Eff. August 1, 2010*
15 *Amended Eff. August 1, 2011*

EXHIBIT H

May 12, 2011



Henderson County Parks and Recreation Department

801 Glover Street, Hendersonville, NC 28792

(828) 697-4884 office / (828) 697-4886 fax / www.hcprd.com

April 25, 2011

Mark Hamlett, PE
Design Services Section Chief
N.C. Wildlife Resources Commission
Division of Engineering Services
1720 Mail Service Center
Raleigh, NC 27699
Via email: mark.hamlett@ncwildlife.org

Dear Mr. Hamlett,

Please accept this letter as a request for assistance from the North Carolina Wildlife Resources Commission with the design, improvement and management of the boat access facility located on the French Broad River at Westfeldt Park. The park located at the corner of Old Fanning Bridge Road and NC 280 provides basic river access, an open picnic area and rustic river bank fishing.

The park is managed, maintained and operated by the Henderson County Parks and Recreation Department. Through conversations it has been determined that a partnership between the NCWRC and HCPRD could enhance access to the river and provide a better recreational facility. The partnership proposal between the two organizations has been discussed with recreation staff and endorsed by the Recreation Advisory Board. The final approval from the Henderson County Board of Commissioners is pending and will be discussed at their Wednesday, May 18th meeting.

It is our understanding that the partnership would allow the NCWRC access to the portion of Westfeldt Park adjacent to the river. This would allow for the rebuilding of the boat ramp, potential further river bank development for fishing, enhanced driveways, turnaround areas for boat launching and enhancement to the access road leading to the boat ramp. In addition the NCWRC would patrol the area adjacent to the ramp and prohibit any loitering or parking not associated with access to the river.

The Henderson County Parks and Recreation Department would continue to manage and maintain the other park areas. This includes mowing and maintaining the front areas of the park. The department would also collect trash and patrol the park as it currently does with assistance from the Henderson County Sheriff's Department and Town of Fletcher Police department. The park would be open to the public at all times. The park would only be closed due to severe weather related issues or other emergency situations.

Thank you for your consideration of this request, and please do not hesitate to contact me if you have any questions or concerns. I look forward to working with you and the NCWRC.

Sincerely,

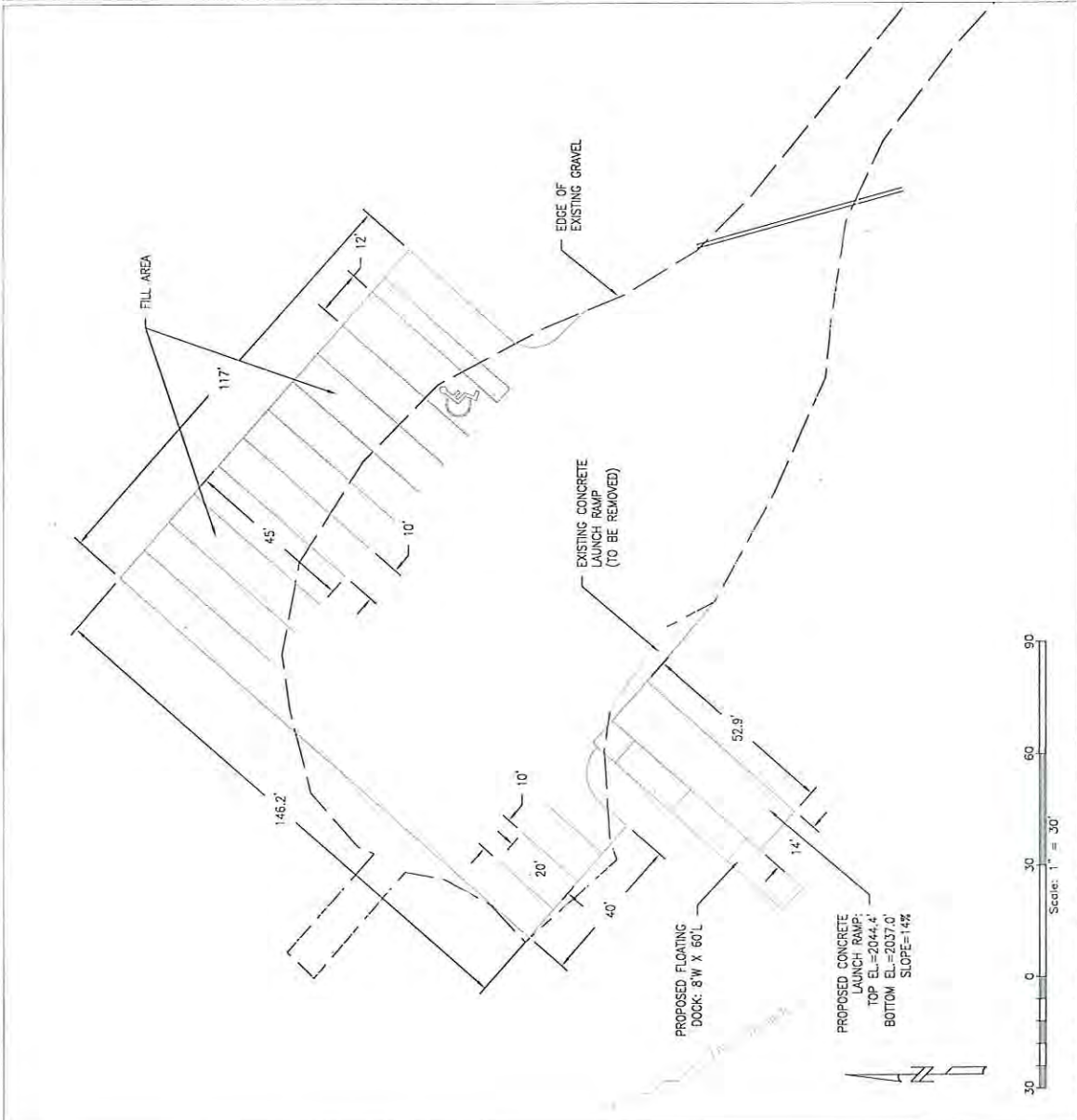
A handwritten signature in black ink that reads "Timothy Hopkin". The signature is written in a cursive, slightly slanted style.

Timothy Hopkin,
Parks and Recreation Director
cc: Selena Coffey, Assistant County Manager

Proposed Westfeldt River Park Boating Access Area
Fletcher, Henderson County



- NOTES:
1. PROPOSED EXPANDED PARKING AREA WILL BE SURFACED WITH PACKED ABC STONE. WHEEL STOPS AND SIGNAGE WILL BE INSTALLED TO DEFINE PARKING SPACES.
 2. APPROXIMATELY 150CY OF COMPACTED FILL WILL BE NEEDED TO BUILD UP THE DEPRESSION AT THE PROPOSED VEHICLE + TRAILER PARKING AREA. LOW AREAS IN EXISTING PARKING/MANEUVER SPACE WILL BE RAISED. PROPOSED LOT SHALL BE GRADED TO PROVIDE DRAINAGE AWAY FROM RAMP WHERE POSSIBLE.
 3. PROPOSED PARKING LAYOUT SHOWN PROVIDES 10 STANDARD SPACES FOR VEHICLES WITH TRAILERS, 1 ADA VAN ACCESSIBLE SPACE FOR VEHICLE + TRAILER WITH ROOM FOR ACCESS AISLE, AND 4 SINGLE VEHICLE PARKING SPACES.
 4. INCREASE IN IMPERVIOUS AREA DUE TO PROPOSED DEVELOPMENT IS APPROXIMATELY 4,108SF (A 10% INCREASE TO EXISTING IMPERVIOUS AREA OF THE SITE) TOTAL AREA (PARKING & ACCESS ROAD) TO RECEIVE NEW LAYER OF ABC STONE IS 44,302SF.
 5. AT LEAST THREE TREES (SHOWN ON SHEET 1) WILL NEED TO BE REMOVED TO CLEAR THE MANEUVER AND PROPOSED RAMP AREAS. ADDITIONAL SMALL TREES MAY NEED TO BE REMOVED NEAR THE PROPOSED PARKING AREA.
 6. EXISTING CONCRETE RAMP DOES NOT MEET WRC STANDARDS FOR WIDTH, THICKNESS AND SLOPE. IT WILL BE REMOVED AND REPLACED WITH A 14' WIDE RAMP @ 14% SLOPE WITH A BOTTOM ELEVATION NEAR 2037.0.
 7. PROPOSED RAMP AND FLOATING DOCK ASSEMBLY WILL NEED TO BE LOCATED DOWNSTREAM OF THE EXISTING RAMP IN ORDER TO CLEAR THE OPPOSITE BANK OF THE CREEK CHANNEL.



PROPOSED IMPROVEMENTS TO BOAT LAUNCH AREA - PLAN VIEW
 Scale: 1"=30'

EXHIBIT I

May 12, 2011

Town of Hookerton

P. O. Box 296
Hookerton, N. C. 28538
Phone 747-3816

March 31, 2011

APR 8 2011
NEWSP

Erik D. Christofferson
Division Chief of Engineering Services
NC Wildlife Resources Commission
VIA EMAIL:erik.christofferson@ncwildlife.org

Dear Mr. Christofferson,

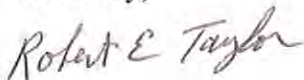
This letter is to request the assistance of the North Carolina Wildlife Resources commission with the installation of a boat access at the corner of Main St. and Hwy 123.

The Contentnea Creek is increasingly becoming a popular destination for boaters and fisherman. The closest NC Wildlife access to the Contentnea Creek is currently in Snow Hill which is approximately eight to ten miles from Hookerton. The wildlife boat ramp in Snow Hill is the only one in Greene County. I believe a boat access in Hookerton would be very popular access for local residents, and would also draw residents from throughout the region who are seeking the experience of creek fishing, canoeing and kayaking.

The Town has purchased some property and Greene County has received some property from a FEMA buyout from the 1999 flood. With this land the Town believes to supply enough parking, recreational trails and activities for all ages to enjoy. We would like for the North Carolina Wildlife Resources Commission to construct an access on the property which would give our citizens the local access to such a natural resource.

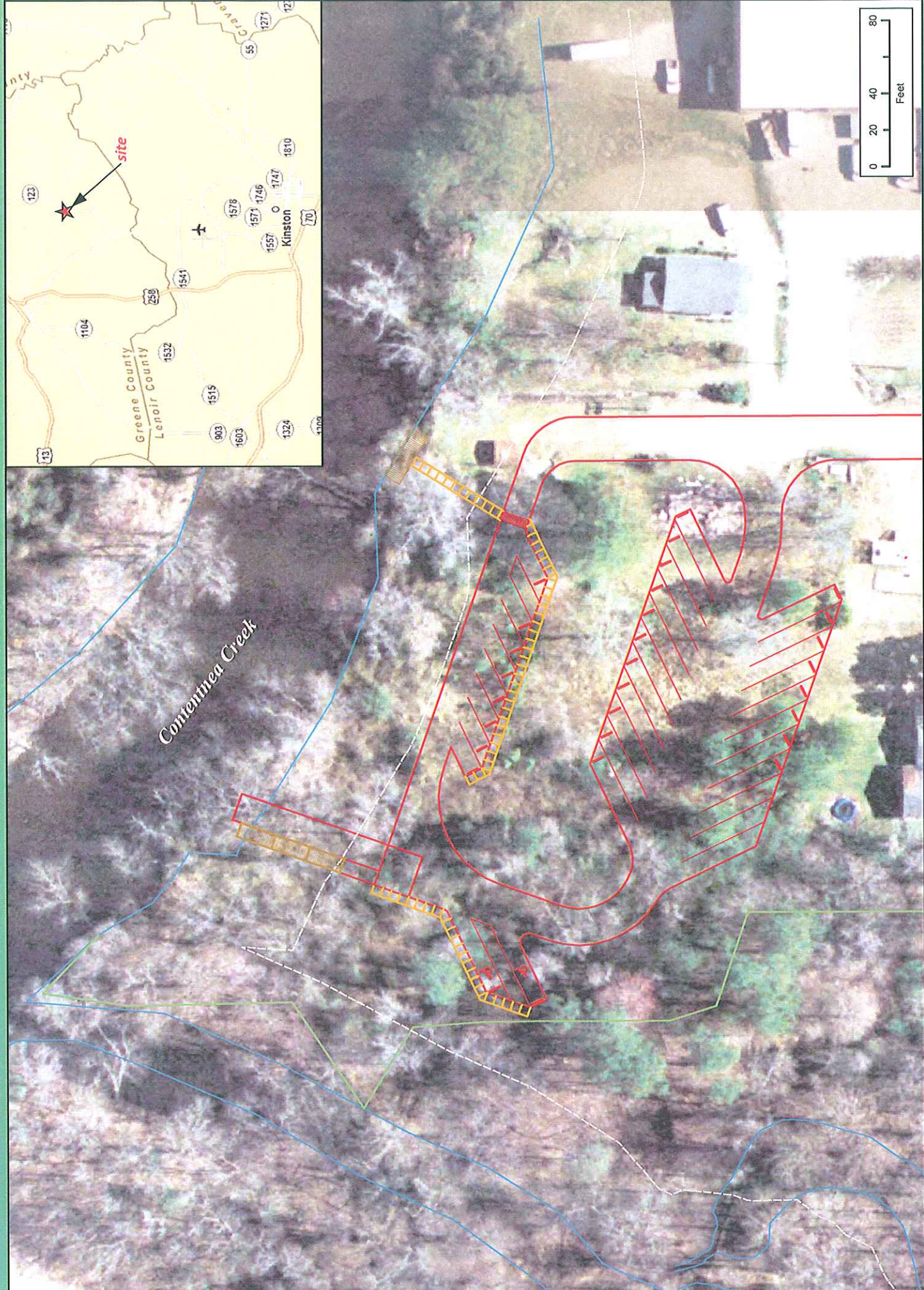
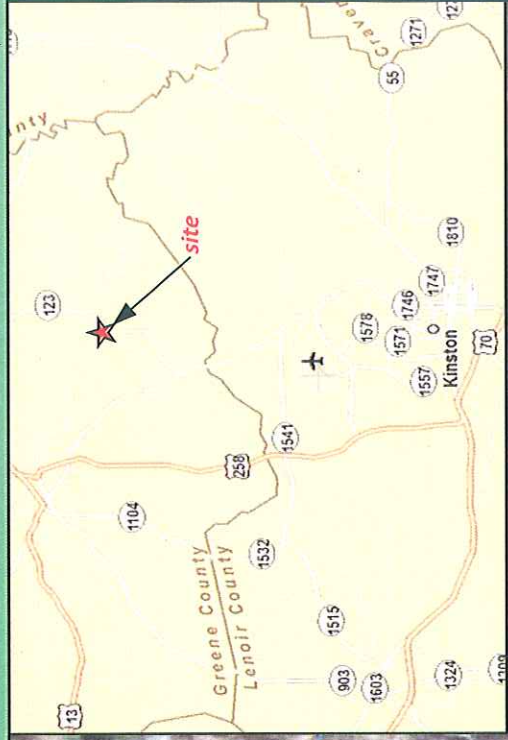
Thank you for your consideration of this request, and please do not hesitate to call me with any questions or concerns. I look forward to working with you on this project.

Sincerely,



Robert E. Taylor
Mayor, Town of Hookerton

Proposed Hookerton Boating Access Area
Hookerton, Greene County



NOT RELEASED FOR CONSTRUCTION

NORTH CAROLINA WILDLIFE RESOURCES COMMISSION
DIVISION OF ENGINEERING SERVICES
1720 MAIL SERVICE CENTER
RALEIGH, NORTH CAROLINA 27699
Phone: 919.707.0150
Fax: 919.707.0162
www.ncwildlife.org



HOOKEKERTON BOATING ACCESS AREA

GREENE COUNTY, NC
CONTENTNEA CREEK

SITE PLAN

Date:	4-25-011
File Name:	HOOKEKERTON
Surveyed:	MRL
Designed:	MAP
Approved:	N/A
Sheet No.:	SD-2.0

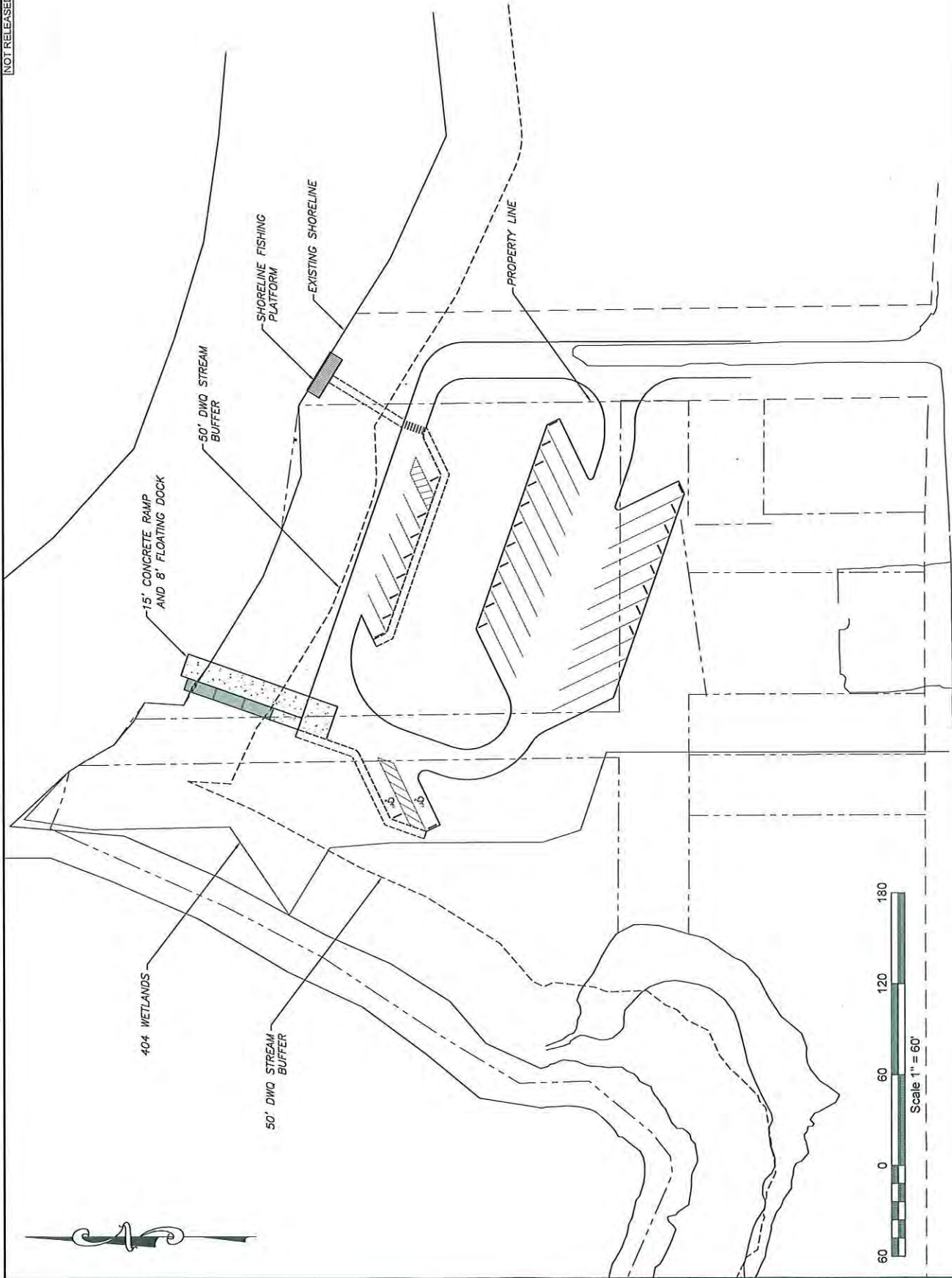


EXHIBIT J

May 12, 2011



☒ North Carolina Wildlife Resources Commission ☒

Gordon S. Myers, Executive Director

April 25, 2011

Erik Christofferson
North Carolina Wildlife Resources Commission
1720 Mail Service Center
Raleigh, NC 27699

Re: Potential Boating Access Area – Bricklanding Road, Brunswick County

Mr. Christofferson:

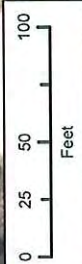
Our engineering design staff has performed site assessments and scoping meetings with various regulatory agencies regarding the Bricklanding Road property. It has been determined that a boating access area is feasible at the site, which would provide much needed access to the Intracoastal Waterway in Brunswick County. I recommend that the North Carolina Wildlife Resources Commission purchase this property to develop a future boating access area.

Sincerely,
North Carolina Wildlife Resources Commission

A handwritten signature in blue ink that reads "Mark A. Hamlett". The signature is fluid and cursive.

Mark A. Hamlett, PE
Design Services Section Chief

Proposed Bricklanding Boating Access Area
Shallote, Brunswick County





SHEET
OF

DESIGN ENGINEER: Lindsay R. Jenkins DATE: 4/20/11
 APPROVED: DATE:
 REVISION: DATE:
 CAD FILE ID:

Potential Bricklanding Road BAA
 Brunswick County
 ICW
 Conceptual Drawing

NORTH CAROLINA WILDLIFE RESOURCES COMMISSION
 DIVISION OF ENGINEERING SERVICES
 1720 MAIL SERVICE CENTER
 RALEIGH, NORTH CAROLINA 27699
 919.707.0150 OFFICE
 919.707.0152 FAX



EXHIBIT K

May 12, 2011



North Carolina Wildlife Resources Commission

Gordon Myers, Executive Director

MEMORANDUM

TO: Erik Christofferson
Division of Engineering Services, Division Chief

FROM: Sara Sherman 
Division of Engineering Services, Project Engineer

DATE: April 18, 2011

RE: Poplar Branch BAA Renovation, Request to Proceed with property purchase

NCWRC-Division of Engineering Services is in the planning and design stages for a renovation of the Poplar Branch BAA on the Currituck Sound in Currituck County. The existing gravel parking area has encroached onto the adjacent neighbor's property over the years. In order to redevelop the ramp to current design standards and improve parking geometry at the site, it would be to the advantage of NCWRC to purchase a small area of the adjacent neighbor's property (0.12 acres) to include in the planned renovation. If the additional property is not purchased, NCWRC would not have the ability to properly renovate the ramps at the existing, preferred location.

The adjacent neighbor, Mr. Bunch, has been verbally agreeable to selling the small area of his property to the Commission for fair market value. Our State Property Office representative has completed an appraisal of the land for \$13,000 to present to Mr. Bunch.

I would like to request your permission to proceed with this transaction and enter into a contract to purchase the subject property.

SS

DIVISION OF ENGINEERING SERVICES

Mailing Address: 1720 Mail Service Center • Raleigh, NC 27699-1720

Office Location: 1751 Varsity Drive • Raleigh, NC • Telephone: (919) 707-0150 • Fax: (919) 707-0162



Property Proposed for Purchase

Gerald Branch
Db 1105, Pg. 584

CURRITUCK SOUND

0.12 Acres

NC Highway #136 (60' RM)

SHEET
1
OF 2

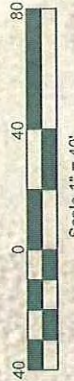
DESIGN ENGINEER: M. Lee	DATE: 3/1/2011
APPROVED:	DATE:
REVISION:	DATE:
CAD FILE ID: PoplarBranch.dwg	

Currituck County
Poplar Branch BAA
 Currituck Sound
 Proposed Property Purchase

NORTH CAROLINA WILDLIFE RESOURCES COMMISSION
 DIVISION OF ENGINEERING SERVICES

1720 MAIL SERVICE CENTER
 RALEIGH, NORTH CAROLINA 27689

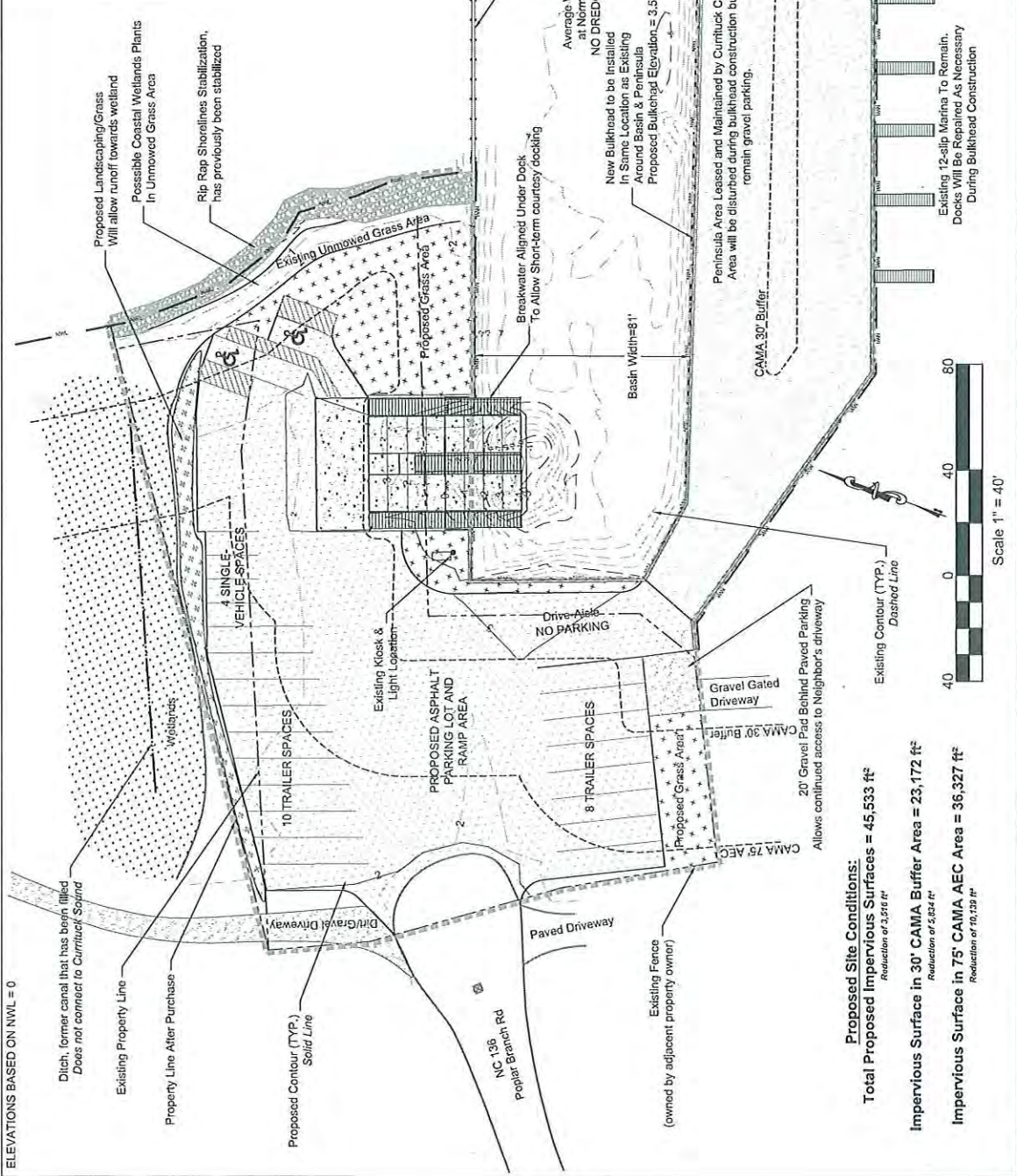
919.707.0100 OFFICE
 919.707.0102 FAX



ELEVATIONS BASED ON NWL = 0

LEGEND

- Benchmark, Elevation = 2.0'
- Light Pole
- Channel Marker
- CAMA Boundaries
- Property Line
- Normal Water Level
- Ditch
- Fence
- Project Area Above NWL
- Gravel
- Concrete
- Rip Rap
- Wetlands
- Proposed Asphalt
- Proposed Landscaping/New Grass



Proposed Site Conditions:
Total Proposed Impervious Surfaces = 45,533 ft²
Reduction of 3,276 ft²
Impervious Surface in 30' CAMA Buffer Area = 23,172 ft²
Reduction of 2,634 ft²
Impervious Surface in 75' CAMA AEC Area = 36,327 ft²
Reduction of 10,139 ft²

<p>NORTH CAROLINA WILDLIFE RESOURCES COMMISSION DIVISION OF ENGINEERING SERVICES 1720 MAIL SERVICE CENTER RALEIGH, NORTH CAROLINA 27689</p>	<p>DESIGN ENGINEER: S. Sherman APPROVED: _____ REVISION: _____ CAD FILE ID: PoplarBranch.dwg</p>	<p>DATE: 3/1/2011 DATE: _____ DATE: _____</p>	<p>SHEET 2 OF 2</p>
	<p>Poplar Branch BAA Currituck Sound DRAFT Proposed Site Plan</p>		

EXHIBIT L

May 12, 2011



Proposed Amendment to 15A NCAC 10F .0376 – Town of Emerald Isle

In anticipation of the development of the Emerald Isle Boating Access Area and safety concerns associated with increased boat traffic, the Town of Emerald Isle made an application to the North Carolina Wildlife Resources Commission for the creation of a no wake zone around Archer Point, including a portion of the Emerald Isle channel leading from Bogue Sound. The NCWRC agreed as part of the construction cost to be responsible for the purchase and placement of markers to define the no wake zone if approved. A fiscal note for the cost of markers was submitted to OSBM and approved.

Statutory authority allows placement of a no wake zone in waters within 50 yards of the Emerald Isle Boating Access Area. The proposed no wake zone as it appeared in the *North Carolina Register Notice of Text* was determined to be far longer and more restrictive than necessary for slowing boat traffic in the channel and along the shoreline around Archer Point (please see attached map of the area as described in the Notice of Text)

Notice of Text in the *North Carolina Register*

- (3) the channel in Bogue Sound north of Archer Point beginning at 34.67718, -77.01528, extending southeast a distance of approximately 3700 feet to the Emerald Isle Boating Access Area, at 34.67105, -77.00622.

Staff made technical changes to the description and boundaries of the proposed no wake zone based upon the intention of the Town of Emerald Isle to create a far smaller regulated area in a portion of the Emerald Isle channel, and not contiguous with the 50-yard no wake zone that extends from the Emerald Isle Boating Access Area.

Staff recommends adoption of this amendment to 15A NCAC 10F .0376 with changes, below. (please see attached map showing the NWZ revision)


- (3) the waters of Bogue Sound adjacent to Archer Point south of and including that portion of the Emerald Isle channel, bounded on the west side by a line running north from 34.67569 N, 77.01537 W to the far side of the channel, and on the east side by a line running northeast from 34.67519 N, 77.01279 W to the far side of the channel.


Emerald Isle No Wake Zone WRC Proposed Sign/Buoy Locations

As described in *North Carolina Register*
Volume 25 Issue 17 - March 1, 2011



EMERALD ISLE BAY

 NWZ Sign/Buoy Locations

 Channel



Proposed New No Wake Area: 15A NCAC 10F .0376 (c) (3)
Emerald Isle, Carteret County

Proposed for Adoption by WRC - May 12, 2011

