

Game Lands Some 2,000,000 acres of public and private lands in North Carolina are managed by the Wildlife Resources Commission for public hunting, trapping and inland fishing. They are designated collectively as “game lands.” Hunting on the Roanoke River National Wildlife Refuge is managed by the U.S. Fish & Wildlife Service and the N.C. Wildlife Resources Commission through a joint venture. Additional regulations apply to the Roanoke River National Wildlife Refuge. Individual maps are available online at ncwildlife.org.

GAME LANDS LICENSE The Game Lands License is required, in addition to the appropriate hunting or trapping license, to hunt, trap, train dogs using wildlife or participate in field trials using wildlife on any game land. (The Game Lands License is included with some lifetime or sportsman’s licenses.) A special permit may be required for some species on these areas. For commission-sanctioned field trials using wildlife scheduled on game lands by the Wildlife Resources Commission, judges are exempt and active participants (defined as anyone who handles a dog or uses a firearm) in possession of hunting licenses from their own states may participate without the license. For any other game land field trial using wildlife, both judges and active participants must possess a game lands license or other North Carolina license which conveys the game land use privilege. Persons who are observing only at field trials do not need any license.

Hunting Seasons

Unless otherwise indicated for a particular game land, game animal and game bird seasons are the same as the private land surrounding the game land. Unless otherwise provided by permit, hunting is allowed on game lands only during the open seasons for game animals and game birds and is restricted to weapons lawful for open game animal or game bird seasons.

GAME LANDS RESTRICTIONS

Waterfowl Hunting

- On waterfowl impoundments with a posted perimeter boundary, it is unlawful on the legal hunting days for hunters to be within the posted impoundment area before 4 a.m., and hunting is prohibited after 1 p.m.; decoys may not be set out prior to 4 a.m. and must be removed by 3 p.m. each day. On designated youth waterfowl days occurring after the end of the regular waterfowl seasons, youth under age 18 may hunt in these game lands impoundments until sunset (all other restrictions still apply). **At all other times, youth are individuals under 18 years of age when hunting on game lands.**
- Waterfowl blinds may be constructed on most game lands; however, they become public property and can be used by anyone on a first-come, first-served basis.
- Blinds on areas not owned by the state must be removed after the hunting season; and on some game lands, the property owners may prohibit construction of permanent hunting blinds by posting a sign at the entrances stating such restrictions.
- It is unlawful to hunt in or within 100 yards of a designated Disabled Sportsman’s Waterfowl Blind during the waterfowl season, except by a disabled access permit holder and his or her permitted companion or holders of applicable disabled waterfowl hunt permits.
- It is unlawful to hunt with or have in possession any shotgun shell containing lead or toxic shot while hunting on any posted waterfowl impoundment on any game land, except shotgun shells containing lead buckshot may be used while deer hunting.
- It is unlawful to operate internal combustion engine-powered vessels or vehicles on posted waterfowl impoundments.

- If a waterfowl impoundment has a posted scouting-only zone, all activities except hunting and trapping are restricted to that zone from Nov. 1 to March 15.
- When open days for waterfowl include Christmas and New Year’s Day and those days fall on Sundays, the open waterfowl hunting day is the following Monday.

Vehicle Usage

- Driving a motorized vehicle licensed for highway use is allowed only on those roads constructed, maintained and open for vehicular travel and those trails posted for vehicular use. This does not apply to participants in scheduled bird dog field trials held on the Sandhills Game Land.
- Operation of any motorized land vehicle, including ATVs, **not licensed for highway use** is prohibited, except as otherwise expressly allowed. This does not apply to those areas specifically designated in national forests for unlicensed vehicle use.
- On those game lands or parts thereof specifically listed under the Disabled Access Program (page 68), persons holding a Disabled Veteran or Totally Disabled License, a Disabled Sportsman Hunt Certification, or a Disabled Access Permit may operate vehicles, including ATVs on:
 - any Wildlife Resources Commission-maintained road open for vehicular travel
 - those trails posted for vehicular travel
 - ungated and open-gated roads otherwise closed to vehicular traffic.
- It is unlawful to block traffic or gates or otherwise prevent vehicles from using any roadway.
- On roads posted as “limited access” motorized vehicles are prohibited from 10 p.m. to 5 a.m. during the months of June, July and August.

Weapons

- It is unlawful to discharge any weapon:
 - from a vehicle,
 - within 150 yards of any residence located on or adjacent to game lands,
 - within 150 yards of any game lands building or game lands camping area (unless otherwise posted).
 The 150-yard provision of this rule does not apply to the use of archery equipment on Butner-Falls of Neuse and Jordan game lands.
- Firearms may be carried openly, or concealed with a valid concealed handgun permit, at any time on game lands, except for the game lands noted in this section. Hunting is allowed ONLY during the open seasons on game birds and game animals. On Buckhorn, Chatham, Harris, Hyco, Lee, Mayo, and Sutton Lake game lands, and Pee Dee River Game Land north of U.S. 74, and that portion of R. Wayne Bailey-Caswell Game Land that is located north of U.S. 158 and east of N.C. 119 during closed seasons and closed hunting days on game birds (waterfowl, doves, woodcock, snipe, rails, gallinules, moorhens, coots, grouse, pheasant, quail, turkey) and game animals (deer, bear, fox, rabbits, squirrels, bobcats, opossum, raccoon), it is unlawful to possess any firearm readily available for use. During that time in which fox season is the only open season for a game animal, it is also unlawful to possess these weapons. However, persons may possess a firearm during the closed season on these game lands if:
 - it is cased or not immediately available for use;
 - it is used by persons participating in field trials on field trial areas;
 - it is possessed in designated camping areas for defense of persons and property;
 - or if it is a 22-caliber pistol with a barrel, not greater than 7.5 inches in length and shooting only short, long or long rifle ammunition, carried as a side arm.

In accordance with Code of Federal Regulations, Title 36, Chapter III, Part 327, Section 327.13; the possession of loaded firearms, ammunition, loaded projectile firing devices, bows and arrows, crossbows, or other weapons is prohibited on Butner-Falls of Neuse, Jordan, Kerr Scott, and Vance game lands unless:

- in the possession of a Federal, state or local law enforcement officer;
- being used for hunting or fishing, with devices being unloaded when transported to, from or between hunting and fishing sites;
- being used at authorized shooting ranges; or
- written permission has been received from the District Commander.
- Where prohibited, target shooting is defined as the discharge of a firearm for purposes other than hunting, trapping or self-defense.

Training or Hunting with Dogs

- Except for authorized field trials, dogs may not be trained or allowed to run unleashed from April 1 through Aug. 15 on any game land located west of I-95 and from March 15 through June 15 east of I-95.
- On game lands west of I-95, dogs also may not be trained or allowed to run unleashed during daylight hours on dates when special hunts are scheduled for the Disabled Sportsman Program. Additional restrictions apply to some bear sanctuaries and game lands.
- It is unlawful to train dogs or allow dogs to run unleashed on bear sanctuaries in and west of Madison, Buncombe, Henderson and Polk counties from March 1 to the Monday on or nearest Oct. 15.

Bear Sanctuaries

- It is unlawful to take feral swine on bear sanctuaries, except during the bow season, blackpowder season, deer gun season and any small game season, but hunters are restricted to the weapons and manner of take legal for that particular season.
- On bear sanctuaries, bear may not be taken and dogs may not be used to take feral swine.
- Dogs may not be used to pursue bear, except during permit hunts that allow hunting bear with dogs.

Posted Zones on Game Lands

- Safety Zone – unlawful to hunt or discharge a weapon. Falconry is allowed.
- Restricted Zone – no entry without a permit.
- Temporary Restricted Zone – no entry without a permit.
- Archery Zone – bow-and-arrow hunting and falconry only. On such areas, deer of either sex may be taken on all open days of any applicable open deer season. Hunting with dogs prohibited.
- Restricted Firearms Zones – unlawful to hunt with a centerfire rifle.
- Scouting-only Zone – unlawful to discharge firearms or bow and arrow.
- Restricted Deer Hunting Zone – use of dogs for taking deer prohibited without a permit.
- Day use only Zone – all public use prohibited between sunset and sunrise.

Removal of Plants, Animals and Other Materials

Only the following plants, animals and materials may be possessed on or removed from game lands:

- Wildlife, birds or fish legally taken under a valid hunting, trapping, fishing or falconry license
- Small amount of edible plants or plant parts for personal consumption, except any plants on a state or federal protected list.
- Insects, worms or other invertebrates collected as fish bait for personal use, except any on a state or federal protected list. Any fish bait collected may not be sold.

- Small amounts of animal parts, plant parts not removed from live plants, dirt, rocks and water. These items may not be collected for commercial purposes or sale.
- Firewood for use while camping on a game land.
- Litter and road kill animals, except when specifically prohibited.
- To possess or remove any other plants, animals and materials requires written permission. This includes, but is not limited to, firewood to be taken off the game land, pine straw, ginseng, venus fly-trap, snakes, lizards, turtles, frogs and salamanders.

Other Restrictions

- Disabled sportsman blinds are for use by those individuals who possess a Disabled Veteran or Totally Disabled License or a Disabled Sportsman Hunt Certification, in addition to a valid hunting license and their companions on a first-come basis during nonpermit, open hunting days, except for the Restricted Area of R. Wayne Bailey-Caswell Game Land. During permit hunts, the Commission will designate use of disabled sportsman blinds.
- Use of game lands for purposes other than hunting, trapping and fishing is subject to the control of the landowners.
- It is unlawful to release ANY bird or animal, except hunting dogs and raptors, on game lands without written authorization from the Wildlife Resources Commission.
- It is unlawful to hunt while under the influence of alcohol or any narcotic drug.
- It is unlawful to litter or dispose of refuse, except in receptacles provided for the purpose.
- It is unlawful to obscure the sex or age of any bird or animal by mutilation of the carcass.
- Placing bait on game lands is prohibited without written authorization.
- Game birds or game animals may not be taken with the aid of bait.
- It is unlawful to erect or to occupy for the purpose of hunting, any tree stand or platform attached by nails, screws, bolts or wire to a tree on any game land designated herein. This prohibition shall not apply to lag-screw steps or portable stands that are removed after use with no metal left remaining in or attached to the tree.
- It is unlawful to camp on game lands, except on an area designated by the landowner for camping, or to camp on those U.S. Forest Service lands that have been closed by posted order of the U.S. Forest Service. See the individual game lands listings beginning on page 69 for further restrictions.
- **On game lands owned by the Wildlife Resources Commission, the maximum period of consecutive overnight camping at any designated campground is 14 days within any 30-day period from May 1 – August 31. After 14 consecutive days of camping during this period, all personal belongings must be removed from the game land.**
- Raccoon and opossum hunting may continue until 7 a.m. on Tuesdays and Thursdays on three-day-per-week game lands and until midnight on Saturdays on all game lands.
- U.S. Forest Service, U.S. Fish & Wildlife Service and U.S. Corps of Engineers regulations prohibit permanent structures (including permanent duck blinds and permanent deer stands) on all lands under their management.
- A permit is needed to enter Hunting Creek Swamp in Davie County.
- John's River Waterfowl Refuge in Burke County is closed to hunting.
- From one-half hour before sunrise until one-half hour after sunset, properly licensed hunters may take feral swine on game lands during the open season for any game animal using any legal manner of take allowed during those open game seasons. Dogs may be used for hunting feral swine only on those game lands where the use of dogs is allowed for hunting deer or bear and only during the open applicable deer or bear season.

- Coyote hunting on game lands in Beaufort, Dare, Hyde, Tyrrell and Washington counties is limited to permit hunts administered through the Permit Hunting Opportunities Program. Elsewhere on game lands, from one-half hour before sunrise until one-half hour after sunset, coyotes may be taken by properly licensed hunters during any open season for taking game animals and game birds using weapons that are lawful for the open game animal or game bird seasons.
- From one-half hour after sunset until one-half hour before sunrise, hunting feral swine and coyotes on game lands is limited to permit hunts administered through the Permit Hunting Opportunities Program.
- Public nudity on any game land is prohibited.

Trapping on Game Lands Trapping fur-bearing animals is permitted on game lands during the open seasons and in accordance with the trapping regulations, except on posted “Safety,” “Temporary Restricted” and “Restricted” zones and the regulated areas listed below that are closed to trapping:

- John’s River Waterfowl Refuge, Burke Co.
- Hunting Creek Swamp Waterfowl Refuge, Davie Co.
- J. Robert Gordon Sandhills Field Trial Area

A permit is required to trap on any game land designated as a permit-only area.

Bait may not be used on the national forest lands bounded by the Blue Ridge Parkway on the south, U.S. 276 on the north and east, and N.C. 215 on the west.

Trespassing on Game Lands Entry on game lands for purposes other than hunting, trapping and fishing is subject to the control of the landowners.

Youth Waterfowl Days No special permit will be required for youth to hunt waterfowl on any game land or game land impoundment, including permit-only areas on those days officially designated as “Youth Waterfowl Days,” unless specified for an individual game land that waterfowl hunting on Youth Waterfowl Days is by permit only.

Waterfowl Management Areas On those areas established by the Wildlife Resources Commission for either waterfowl restoration or waterfowl resting and feeding, and posted as waterfowl management areas, it is unlawful to hunt or harass waterfowl.

Field-Trial Facilities Field trials may be scheduled on the J. Robert Gordon Sandhills “Field Trial Area” and the Laurinburg “Fox-Trial Facility” by application in advance, accompanied by the appropriate facility use fee. No person or group shall use these facilities without having obtained specific written approval from an authorized agent of the Wildlife Resources Commission.

Shooting Ranges Commission-managed shooting ranges are available for the purpose of firearm marksmanship and development of shooting skills. Days and hours of operation may vary and are posted at the entrance to each range. All shooting-range users shall abide by the game lands restrictions and handle firearms and archery equipment in a safe manner. They also shall obey all regulations posted at the range. Additional restrictions:

- No use of glass targets.
- No intentional shooting into a target holder or other permanent structure.
- No shooting at targets off the range.

Currently the Commission manages the following shooting ranges:

- Wayne E. Smith Shooting Range on Cold Mountain Game Land.
- Flintlock Valley Shooting Range on Uwharrie Game Land.
- John F. Lentz Hunter Education Complex on Sandhills Game Land.
- Caswell Shooting Range on R. Wayne Bailey-Caswell Game Land.
- Holly Shelter Shooting Range on Holly Shelter Game Land.

Additional public and private shooting ranges can be found at ncwildlife.org/Hunting/BeforetheHunt/ShootingRanges.aspx

DISABLED ACCESS PROGRAM

Disabled Access Permit A Disabled Access Permit allows persons with limited physical mobility to operate vehicles, including ATVs, on any Commission-maintained road open for vehicular travel, those trails posted for vehicular travel and on open-gated or ungated roads, otherwise closed to vehicular traffic on game lands listed in the Disabled Access Program and to have access to special disabled hunting blinds. It does not authorize operation of vehicles on closed roads on game lands not listed in the Disabled Access Program. The disabled hunter will be issued a companion and vehicle access card. One companion may accompany the disabled hunter, provided that person possesses

The Federal Aid in Wildlife Restoration Act, commonly known as the Pittman-Robertson Wildlife Restoration Act, was signed by President Franklin D. Roosevelt in 1937. The Federal Aid in Sport Fish Restoration Act, commonly known as the Dingell-Johnson Sport Fish Restoration Act, was passed in 1950. Combined, these acts make up the Wildlife and Sport Fish Restoration program. This program is administered by the U.S. Fish and Wildlife Service and funded by excise taxes on firearms, archery equipment, ammunition, fishing tackle, boats, and outboard motors sold to sportsmen and women. To date the Wildlife and Sport Fish Restoration program has provided over \$17.5 billion to support fish and wildlife conservation in the United States, including over \$381 million to North Carolina.

North Carolina Wildlife Restoration projects include:

- Restoring white-tailed deer, wild turkey, and river otter.
- Managing wildlife populations statewide and habitat on 2 million acres of state game lands.
- Providing technical guidance to public and private landowners to help them manage wildlife.
- Training more than 18,000 students annually in hunter education.

North Carolina Sport Fish Restoration projects include:

- Managing fish populations in lakes, rivers, and streams and protecting these aquatic habitats.
- Managing more than 1,100 miles of trout streams with public access.
- Offering free public fishing opportunities at more than 100 Public Fishing Areas and Community Fishing Program sites.
- Providing access to public waters at more than 200 Boating Access Areas.



For more information on program accomplishments in North Carolina, visit www.ncwildlife.org



the companion card. This permit is valid as long as the qualifying disability persists. There is no fee associated with this permit. Refer to the “Disabled Sportsman Information” section on page 14 for qualification and application information.

NOTE: Disabled individuals, as defined under the Americans with Disabilities Act, may use a wheelchair or other mobility device designed for indoor pedestrian use on any area where foot travel is allowed on properties owned or controlled by the Commission.

Areas Involved Vehicular access under this permit is provided on the following game lands: *(Additional access may be provided on some U.S. Forest Service-owned game lands. Those areas are not listed below, but details may be obtained by contacting the local ranger station for the district in which you wish to hunt.)*

- Bertie
- Bladen Lakes
- Butner-Falls of Neuse (waterfowl blind for disabled hunters only)
- R. Wayne Bailey – Caswell
- Goose Creek (waterfowl blind for disabled hunters only)
- Holly Shelter
- Lantern Acres
- Roanoke River Wetlands
- **Rockfish Creek Game Land**
- Sandhills
- South Mountains
- Suggs Mill Pond
- Tillery
- Thurmond Chatham

See current game land maps at ncwildlife.org for details and disabled access locations.

Currently there is a waterfowl blind for the disabled on the Spring Creek Impoundment of Goose Creek Game Land and on the Beaver Dam Impoundment of Butner-Falls of Neuse Game Land. A disabled access permit is required. On permitted days on Spring Creek and on the Beaver Dam Impoundment, users must apply through the Permit Hunting Opportunities Program.

Disabled Sportsman Permit Hunt Program All of the hunts the Commission offers to the disabled sportsman require permits. Information about qualifications required for these hunts and available disabled blinds can be found at ncwildlife.org/permithunt.

EITHER-SEX SEASONS AND OTHER RULES APPLYING TO INDIVIDUAL GAME LANDS

Each game land falls into one of three categories and is so designated in the individual game lands listings. A special permit may be required for some species on any of these areas (apply at ncwildlife.org/permithunt). The three designations are as follows:

- **Six-day-per-week areas:** Game lands on which any game may be taken during the open seasons.
- **Three-day-per-week areas:** Game lands on which any game may be hunted unless otherwise noted. Open days are Mondays, Wednesdays, Saturdays, Thanksgiving, Christmas, New Year’s and Martin Luther King Jr. days. These areas are closed to hunting on other days of the week, unless specifically opened under the individual game lands listings. Falconry may be practiced on Sundays.
- **Permit-only areas:** Game lands on which a special permit is required to hunt or trap. To apply for any special permits in the listings below, visit ncwildlife.org/permithunt.
- **Falconry on Game Lands:** Within established hunting seasons and on open hunting days, falconry is allowed on Archery and Safety Zones in game lands.

Alcoa Game Land – Davie, Davidson, Montgomery, Rowan and Stanly counties

- Six-day-per-week area.
- Gun Either-Sex Deer Season: Nov. 11 – 17 and Dec. 26 – Jan. 1 in that portion in Montgomery County (moderate season); Nov. 18 – Jan. 1 in that portion in Davie County and Nov. 11 – Jan. 1 in that portion in Davidson, Rowan and Stanly counties (maximum season).
- On the Lick Creek Tract, deer and bear hunting is archery only.

Alligator River Game Land – Tyrrell County

- Six-day-per-week area.
- Gun Either-Sex Deer Season: Oct. 14 – Jan. 1 (maximum season)
- Bear may only be taken on Monday, Tuesday and Wednesday during the November Bear Season and on Monday, Tuesday and Wednesday of the second week of the December season.

Angola Bay Game Land – Duplin and Pender counties

- Six-day-per-week area.
- Gun Either-Sex Deer Season: Oct. 14 – Jan. 1 (maximum season).
- Target shooting is prohibited.

Bachelor Bay Game Land – Bertie and Washington counties

- Six-day-per-week area.
- Gun Either-Sex Deer Season: Oct. 14 – Jan. 1 (maximum season).

Bertie County Game Land – Bertie County

- Six-day-per-week area.
- Gun Either-Sex Deer Season: Oct. 14 – Jan. 1 (maximum season).
- On the Johnson Landing Tract, discharge of centerfire rifles is prohibited.

Bladen Lakes State Forest Game Land – Bladen County

- Three-day-per-week area.
- Gun Either-Sex Deer Season: Open days during Oct. 14 – Jan. 1 (maximum season).
- Rifles larger than .22 caliber rimfire shall not be used.
- On the Singletary Tract, hunting deer and bear with dogs is prohibited.
- Turkey hunting on the Singletary Tract is by permit only. (Apply at ncwildlife.org/permithunt.)
- Youth-adult permit hunts are available on Turnbull Creek Educational State Forest. (Apply at ncwildlife.org/permithunt.)
- Camping is restricted to Sept. 1 – Feb. 28 and March 31 – May 14 in areas both designated and posted as camping areas.
- Discharge of centerfire rifles is prohibited.
- The use of dogs for pursuing or taking foxes is prohibited March 15 - July 15.

Brinkleyville Game Land – Halifax County

- Six-day-per-week area.
- Gun Either-Sex Deer Season: Oct. 14 – Oct. 20 and Dec. 26 – Jan. 1 (moderate season).
- Horseback riding, including all equine species, is prohibited.

Brunswick County Game Land – Brunswick County

- Permit-only area. (Apply at ncwildlife.org/permithunt.)
- Hunting deer with dogs is prohibited.

Buckhorn Game Land – Orange County

- Permit-only area. (Apply at ncwildlife.org/permithunt.)
- Horseback riding, including all equine species, is prohibited.

Buckridge Game Land – Tyrrell County

- Three-day-per-week area.
- Gun Either-Sex Deer Season: Open days during Oct. 14 – Jan. 1 (maximum season)
- Bear may only be taken on Monday, Tuesday and Wednesday during the November Bear Season and on Monday, Tuesday and Wednesday of the second week of the December Bear Season.
- Target shooting is prohibited.

Buffalo Cove Game Land – Caldwell and Wilkes counties

- Six-day-per-week area.
- Gun Deer Season: Nov. 20 – Dec. 9 in all portions of the game land
- Gun Either-Sex Deer Season: Dec. 9 (introductory season) in all portions of the game land.
- Blackpowder Season: Oct. 2 – Oct. 14 in all portions of the game land.
- Archery Season: Sept. 9 – Sept. 30, Oct. 16 – Nov. 18, and Dec. 11 - Jan. 1 in all portions of the game land.
- Horseback riding is prohibited except on designated trails May 16 through Aug. 31, and all horseback riding is prohibited from Sept. 1 through May 15. This rule includes all equine species.

Bullard and Branch Hunting Preserve – Robeson County

- Three-day-per-week area.
- **Gun Either-Sex Deer Season: Oct. 14 – Jan 1 (maximum season).**

Butner-Falls of Neuse Game Land – Durham, Granville and Wake counties

- Six-day-per-week area.
- Gun Either-Sex Deer Season: Nov. 11 – 17 and Dec. 26 – Jan. 1 in that portion in Durham and Granville counties and Oct. 14 – 20 and Dec. 26 – Jan. 1 in that portion in Wake County (moderate season).
- Waterfowl may be taken only on Tuesdays, Thursdays and Saturdays, Christmas, Martin Luther King Jr. and New Year’s days, and on opening and closing days of the applicable waterfowl seasons. On the posted waterfowl impoundments, a special permit is required for all waterfowl hunting after Nov. 1.
- Horseback riding, including all equine species, is prohibited.
- Camping is restricted to Sept. 1 – Feb. 28 and March 31 – May 14 in designated camping areas, except on the Mountains-to-Sea Trail Camping Area.
- Camping is allowed at any time on the Mountains-to-Sea Trail Camping Area, not to exceed a maximum stay of two consecutive nights, and campfires are prohibited.
- Turkey hunting is by permit only (apply at ncwildlife.org/permithunt), except on those areas posted as Archery Zones.
- Target shooting is prohibited.
- The use of dogs for hunting deer is prohibited on that portion west of N.C. 50 and south of Falls Lake.
- **Except for hunters engaged in the act of hunting, bicycle riding is allowed only in designated areas from May 15 through August 31 and only on Sundays from September 1 through May 14.**

Buxton Woods Game Land – Dare County

- Six-day-per-week area.
- Gun Either-Sex Season: Dec. 26 – Jan. 1 (conservative season)
- Target shooting is prohibited.

Cape Fear River Wetlands Game Land – Pender and New Hanover counties

- Six-day-per-week area.
- Gun Either-Sex Deer Season: Oct. 14 – Jan. 1 (maximum season).
- Turkey hunting is by permit only on the Roan Island Tract. (Apply at ncwildlife.org/permithunt.)
- On the Canetuck Tract, hunting deer and bear with dogs is prohibited.
- Target shooting is prohibited.

Carteret County Game Land – Carteret County

- Six-day-per-week area.
- Gun Either-Sex Deer Season: Oct. 14 – Oct. 20 and Dec. 26 – Jan 1 (moderate season)
- Dogs may not be used for hunting deer.

R. Wayne Bailey-Caswell Game Land – Caswell County

- Three-day-per-week area.
- Gun Either-Sex Deer Season: Open days during Dec. 20 – Jan. 1 (conservative season).
- Horseback riding is allowed only during June, July and August and on Sundays during the remainder of the year, except during open turkey and deer seasons. Horseback riding is allowed only on roads opened to vehicular traffic and on those gated roads and trails that are posted for equestrian use. Participants age 16 or older must obtain a game lands license prior to engaging in horseback riding on this area.
- Camping is restricted to Sept. 1 – Feb. 28 and March 31 – May 14 in designated camping areas.
- The area posted with signs stating “CURE Wildlife Game Lands, Special Regulations Apply” and encompassed by the following roads is closed to all quail and woodcock hunting and all bird dog training: From Yanceyville south on N.C. 62 to the intersection of S.R. 1746, west on S.R. 1746 to the intersection of S.R. 1156, south on S.R. 1156 to the intersection of S.R. 1783, east on S.R. 1783 to the intersection of N.C. 62, north on N.C. 62 to the intersection of S.R. 1736, east on S.R. 1736 to the intersection of S.R. 1730, east on S.R. 1730 to N.C. 86, north on N.C. 86 to N.C. 62.
- On the posted waterfowl impoundments, a special permit is required for all waterfowl hunting after Nov. 1.
- Target shooting is prohibited except on the Caswell Shooting Range.

Chatham Game Land – Chatham County

- Six-day-per-week area.
- Gun Either-Sex Deer Season: Nov. 11 – Nov. 17 and Dec. 26 – Jan. 1 (moderate season).
- Turkey hunting is by permit only. (Apply at ncwildlife.org/permithunt.)
- Horseback riding, including all equine species, is allowed only during June, July and August and on Sundays during the remainder of the year, except during open turkey and deer seasons.
- Target shooting is prohibited.

Chowan Game Land – Chowan County

- Six-day-per-week area.
- Gun Either-Sex Deer Season: Oct. 14 – Jan. 1 (maximum season).

Chowan Swamp Game Land – Bertie, Gates and Hertford counties

- Six-day-per-week area.
- Gun Either-Sex Deer Season: Oct. 14 – Jan. 1 (maximum season).
- Bear may only be taken on the first Saturday, Monday and Tuesday during the November segment of the bear season and on Monday, Tuesday and Wednesday of the second week of the December segment, except that on the portion of Chowan Swamp Game Land in Gates County east of Highway 158/13, south of Highway 158, west of Highway 32, and north of Catherine Creek and the Chowan River the bear season is Nov. 11 – 18 and Dec. 11 – 23.
- Camping is restricted to to Sept. 1 – Feb. 29 and March 31 – May 14 in areas both designated and posted as camping areas.
- Horseback riding is prohibited except during May 16 – Aug. 31 and on Sundays only Sept. 1 – May 15 on those roads that are open to vehicular traffic and those gated roads and trails posted for equestrian use.

Cold Mountain Game Land – Haywood County

- Six-day-per-week area.
- Gun Either-Sex Deer Season: Dec. 9 (introductory season)
- Horseback riding is prohibited except on designated trails May 16 – Aug. 31, and all horseback riding is prohibited from Sept. 1 – May 15. This rule includes all equine species.

Columbus County Game Land – Brunswick and Columbus counties

- Three-day-per-week area.
- Gun Either-Sex Deer Season: Oct. 14 – Jan. 1 (maximum season).

Croatan Game Land – Carteret, Jones and Craven counties

- Six-day-per-week area.
- Gun Either-Sex Deer Season: Oct. 14 – Jan. 1 (maximum season).
- Waterfowl may be taken only on Tuesdays and Saturdays; on Thanksgiving, Christmas, New Year's and Martin Luther King Jr. days; and on the opening and closing of the applicable waterfowl seasons.
- On the first two open days of dove season, a permit is needed to hunt on posted areas.
- Hunting from Disabled Sportsmen blinds on the Catfish Lake waterfowl impoundment is by permit only. (Apply at ncwildlife.org/permithunt.)

Currituck Banks Game Land – Currituck County

- Six-day-per-week area.
- Gun Either-Sex Deer Season: Oct. 14 – Jan. 1 (maximum season)
- Permanent waterfowl blinds in Currituck Sound adjacent to these game lands shall be hunted by permit only after Nov. 1. (Apply at ncwildlife.org/permithunt.)
- Licensed hunting guides may accompany the permitted individual or party, but may not use a firearm.
- The boundary of the game land shall extend five yards from the edge of the marsh or shoreline.
- Dogs shall be allowed only for waterfowl hunting by permitted hunters on the day of their hunt.
- No screws, nails or other objects penetrating the bark shall be used to attach a tree stand or blind to a tree.

Dare Game Land – Dare and Hyde counties

- Six-day-per-week area.
- Gun Either-Sex Deer Season: Dec. 26 – Jan. 1 (conservative season).
- No hunting on posted parts of bombing range. Selected roads may be closed for military training.
- The use and training of dogs is prohibited from March 1 – June 30.
- Bear hunting is by permit only (apply at ncwildlife.org/permithunt) on the Bombing Range Bear Sanctuary.

Dover Bay Game Land – Craven County

- Six-day-per-week area.
- Gun Either-Sex Deer Season: Oct. 14 – Jan. 1 (maximum season)

DuPont State Forest Game Land – Henderson and Transylvania counties

- Permit-only area. (Apply at ncwildlife.org/permithunt.)
- Training and the use of dogs is prohibited except during scheduled permit hunts.

Elk Knob Game Land – Watauga County

- Six-day-per-week area.
- Gun Either-Sex Deer Season: Dec. 26 – Jan. 1 (conservative season).

Embro Game Land – Halifax and Warren counties

- Six-day-per-week area.
- Gun Either-Sex Deer Season: Oct. 14 – 20 and Dec. 26 – Jan. 1 (moderate season).
- Horseback riding, including all equine species, is prohibited.

Goose Creek Game Land – Beaufort and Pamlico counties

- Six-day-per-week area.
- Gun Either-Sex Deer Season: Oct. 14 – Jan. 1 (maximum season).
- Prior to Oct 1, waterfowl may be taken only on Tuesdays and Saturdays and on the opening and closing days of the statewide waterfowl seasons on the posted impoundments.
- Beginning on the first open waterfowl season day in October and through the end of the waterfowl season, waterfowl hunting is by permit only on posted waterfowl impoundments.

- Hunting and vehicular access on the Parker Farm Tract is restricted from Sept. 1 through Jan. 1 and April 1 – May 15 to individuals that possess a valid hunting opportunity permit. (Apply at ncwildlife.org/permithunt.)

- Camping is restricted to Sept. 1 – Feb. 28 and March 31 – May 14 in areas both designated and posted as camping areas.

Green River Game Land – Henderson and Polk counties

- Six-day-per-week area.
- Gun Either-Sex Deer Season: Jan. 1, except that part in Henderson Co. where the season is Dec. 9 (introductory seasons).
- Horseback riding is prohibited. This rule includes all equine species.

Green Swamp Game Land – Brunswick County

- Six-day-per-week area.
- Gun Either-Sex Deer Season: Oct. 14 – Jan. 1 (maximum season).

Gull Rock Game Land – Hyde and Tyrell counties

- Six-day-per-week area.
- Gun Either-Sex Deer Season: Oct. 14 – Jan. 1 (maximum season).
- On posted waterfowl impoundments, hunting of any species of wildlife is limited to Tuesdays and Saturdays; Thanksgiving, Christmas and New Year's and Martin Luther King Jr. days; and opening and closing days of the applicable waterfowl seasons.
- Bear may only be taken Monday, Tuesday and Wednesday during the November segment of the bear season and Monday, Tuesday and Wednesday of the second week of the December segment, except that portion of the game land designated as bear sanctuary. Bear hunting is prohibited on the bear sanctuary.
- Camping is restricted to Sept. 1 – Feb. 28 and March 31 – May 14 in areas both designated and posted as camping areas.

Harris Game Land – Chatham, Harnett and Wake counties

- Six-day-per-week area.
- Gun Either-Sex Deer Season: Nov. 11 – 17 and Dec. 26 – Jan. 1, except those parts in Wake and Harnett counties where the season is Oct. 14 – Oct. 20 and Dec. 26 – Jan. 1 (moderate seasons).
- Waterfowl may be taken only on Tuesdays, Fridays and Saturdays; on Thanksgiving, Christmas and New Year's days; and on the opening and closing days of the applicable waterfowl seasons.
- The use or construction of permanent hunting blinds is prohibited.
- Turkey hunting is by permit only (apply at ncwildlife.org/permithunt), except on those areas posted as Archery Zones.
- Target shooting is prohibited.
- Horseback riding is prohibited.

Hill Farm Game Land – Stokes County

- Permit-only area. (Apply at ncwildlife.org/permithunt.)

Holly Shelter Game Land – Pender County

- Six-day-per-week area.
- Gun Either-Sex Deer Season: Open days during Oct. 14 – Jan. 1 (maximum season).
- Waterfowl hunting is allowed only on Tuesdays and Saturdays, and Thanksgiving, Christmas, New Year's and Martin Luther King Jr. days; and on the opening and closing days of the applicable waterfowl seasons.
- Camping is restricted to Sept. 1 – Feb. 28 and March 31 – May 14 in areas both designated and posted as camping areas.
- Dogs may be used for hunting deer and bear on Mondays, Wednesdays, Saturdays, Thanksgiving, Christmas, and New Year's days only.
- On the portion of the game land that is north of the Bear Garden Road, west of Shaw Road to Baby Branch, east of the Northeast Cape Fear River, south of N.C. 53 and west of N.C. 50, deer hunting and bear hunting are by permit only. (Apply at ncwildlife.org/permithunt.) Other species may be hunted on this area only during the normal open days for this game land.
- Hunting deer and bear with dogs on the Pender 4 and Greentree impoundment tracts is prohibited.

- Hunting and vehicular access on the Pender 4 Tract is restricted from Sept. 1 to the last day of February and April 1 to May 15 to individuals that possess valid hunting opportunity permits. (Apply at ncwildlife.org/permithunt.)
- Hunters who possess a Disabled Access Permit to operate all terrain vehicles are allowed on and within 100 yards of trails designated for Disabled Sportsman Access. See the online game land maps for designated trails.
- Target shooting is prohibited except on the Holly Shelter Shooting Range.
- Geocaching is allowed only on closed days for taking bear, deer, turkey, and waterfowl.

Hycos Game Land – Person County

- Six-day-per-week area.
- Gun Either-Sex Deer Season: Nov. 11 – Nov. 17 and Dec. 26 – Jan. 1 (moderate season).
- Target shooting is prohibited.

J. Morgan Futch Game Land – Tyrrell County

- Permit Only Area. (Apply at ncwildlife.org/permithunt.)

Johns River Game Land – Burke County

- Permit Only Area. (Apply at ncwildlife.org/permithunt.)
- The use or construction of permanent hunting blinds is prohibited.

Jordan Game Land – Durham, Chatham, Orange and Wake counties

- Six-day-per-week area.
- Gun Either-Sex Deer Season: Nov. 11 – Jan. 1, except that part in Wake Co. where the season is Oct. 14 – Jan. 1 (maximum seasons).
- Waterfowl may be taken only on Mondays, Wednesdays and Saturdays; on Thanksgiving, Christmas and New Year’s days; and on the opening and closing days of the applicable waterfowl seasons.
- Horseback riding, including all equine species, is allowed only on those areas posted as American Tobacco Trail and other areas specifically posted for equestrian use. Unless otherwise posted, horseback riding is permitted on the American Tobacco Trail anytime the trail is open. On all other posted equestrian trails, horseback riding is limited to the months of June, July and August, and Sundays the remainder of the year except during open turkey and deer seasons. Participants age 16 and older must obtain a game land license prior to engaging in horseback riding on any area other than the American Tobacco Trail.
- Target shooting is prohibited.
- Turkey hunting is by permit only (apply at ncwildlife.org/permithunt), except on those areas posted as Archery Zones.
- Except while hunting, bicycle riding is restricted to designated areas.

Juniper Creek Game Land – Brunswick and Columbus counties

- Six-day-per-week area.
- Gun Either-Sex Deer Season: Oct. 14 – Jan. 1 (maximum season).
- Camping is restricted to Sept. 1 – Feb. 28 and March 31 – May 14 in areas both designated and posted as camping areas.

Kerr Scott Game Land – Wilkes County

- Six-day-per-week area.
- Either-Sex Deer Season: Nov. 18 – Jan. 1 (maximum season)
- Use of centerfire rifles is prohibited.
- Deer may be taken by archery equipment only except during the blackpowder season.
- Tree stands may not be left overnight and no screws, nails, or other objects may be used to aid in climbing or to attach a tree stand or blind to a tree.
- Turkey hunting is archery only.

Lantern Acres Game Land – Tyrrell and Washington counties

- Six-day-per-week area.
- Gun Either-Sex Deer Season: Oct. 14 – Jan. 1 (maximum season).

- Turkey hunting is by permit only. (Apply at ncwildlife.org/permithunt.)
- Dogs may not be used to hunt deer on the Godley Tract.
- Waterfowl hunting on posted waterfowl impoundments is by permit only. (Apply at ncwildlife.org/permithunt.)

Lee Game Land – Lee County

- Six-day-per-week area.
- Gun Either-Sex Deer Season: Nov. 11 – Nov. 17 and Dec. 26 – Jan. 1 (moderate season).
- Target shooting is prohibited.

Light Ground Pocosin Game Land – Pamlico County

- Six-day-per-week area.
- Gun Either-Sex Deer Season: Oct. 14 – Jan. 1 (maximum season).

Linwood Game Land – Davidson County

- Six-day-per-week area.
- Gun Either-Sex Deer Season: Nov. 11 – Jan. 1 (maximum season).

Lower Fishing Creek Game Land – Edgecombe and Halifax counties

- Six-day-per-week area.
- Gun Either-Sex Deer Season: Oct. 14 – Oct. 20 and Dec. 26 – Jan. 1 (moderate season).
- Horseback riding, including all equine species, is prohibited.
- Dogs may not be used for hunting deer.

Mayo Game Land – Person County

- Six-day-per-week area.
- Gun Either-Sex Deer Season: Nov. 11– 17 and Dec. 26 – Jan. 1 (moderate season).
- Waterfowl may be hunted only on Tuesdays, Thursdays and Saturdays; Christmas and New Year’s days; and on opening and closing days, of the applicable waterfowl seasons.
- Target shooting is prohibited.

Mitchell River Game Land – Alleghany and Surry counties

- Three-day-per-week area.
- Gun Either-Sex Deer Season: Open days during Dec. 20 – Jan. 1 (conservative season).
- Horseback riding is prohibited except on designated trails. May 16 – Aug. 31. All horseback riding is prohibited. Sept. 1 – May 15. This rule includes all equine species.

Nantahala Game Land – Cherokee, Clay, Graham, Jackson, Macon, Swain and Transylvania counties

- Six-day-per-week area.
- Gun Either-Sex Deer Season: Dec. 9 in that portion in Transylvania County (introductory season).

Needmore Game Land – Macon and Swain counties

- Six-day-per-week area.
- Horseback riding is prohibited except on designated trails May 16 – Aug. 31. All horseback riding is prohibited from Sept. 1 – May 15. This rule applies to all equine species.
- On posted dove fields, dove hunting on the opening day of dove season is by permit only.

Neuse River Game Land – Craven County

- Six-day-per-week area.
- Gun Either-Sex Deer Season: Oct. 14 – Jan. 1 (maximum season)

New Lake Game Land – Hyde and Tyrrell counties

- Six-day-per-week area.
- Gun Either-Sex Deer Season: Oct. 14 – Jan. 1 (maximum season).

Nicholson Creek Game Land – Hoke County

- Three-day-per-week area.
- Gun Deer Season: Open days during Nov. 11 – Dec. 9
- Archery Season: Open days during Sept. 9 – Oct. 27
- Blackpowder Season: Open days during Oct. 28 – Nov. 8
- Gun Either-Sex Season: Dec. 9 (introductory season)
- The use of dogs for hunting deer is prohibited.
- Turkey hunting is by permit only. (Apply at ncwildlife.org/permithunt.)

- Swimming and internal combustion engines are prohibited at Lake Upchurch.
 - Target shooting is prohibited.
- North River Game Land** – Camden and Currituck counties
- Six-day-per-week area.
 - Gun Either-Sex Deer Season: Oct. 14 – Jan. 1 (maximum season).
 - The boundary of the game land shall extend five yards from the edge of the marsh or shoreline in Currituck County.
 - Hunting on the posted waterfowl impoundment is by permit only. (Apply at ncwildlife.org/permithunt.)

- Northwest River Marsh Game Land** – Currituck County
- Six-day-per-week area.
 - Gun Either-Sex Deer Season: Oct. 14 – Jan. 1 (maximum season).
 - The boundary of the game land shall extend five yards from the edge of the marsh or shoreline.

- Pee Dee River Game Land** – Anson, Montgomery, Richmond and Stanly counties
- Six-day-per-week area.
 - Gun Either-Sex Deer Season: Nov. 11 – Nov. 17 and Dec. 26 – Jan. 1, except that part in Richmond Co. where the season is Oct. 14 – Oct. 20 and Dec. 26 – Jan. 1 (moderate seasons).
 - Use of centerfire rifles is prohibited in that portion in Anson and Richmond counties north of U.S. 74.
 - Target shooting is prohibited.
 - Horseback riding is allowed only on roads open to vehicular traffic and only during the months of June, July and August, and Sundays the remainder of the year except during the open turkey and deer seasons.

- Perkins Game Land** – Davie County
- Three-day-per-week area.
 - Gun Either-Sex Deer Season: Jan. 1 (introductory season).
 - Horseback riding is prohibited from November 1 through January 1.

- Pisgah Game Land** – Avery, Buncombe, Burke, Caldwell, Haywood, Henderson, Madison, McDowell, Mitchell, Transylvania, Watauga and Yancey counties
- Six-day-per week area.
 - Gun Either-Sex Deer Season: Dec. 9, except that portion in Watauga County where the season is Jan. 1 (introductory seasons)
 - Hunting raccoon, opossum and wildcat on the Harmon Den and Sherwood Bear sanctuaries in Haywood County is allowed.
 - Bear hunting on Mt. Mitchell and Daniel Boone bear sanctuaries is by permit only.
 - Horseback riding, including all equine species, is prohibited on the Black Bear (McDowell County), Linville River (Burke County), and Little Tablerock tracts (Avery, McDowell and Mitchell counties).

- Pond Mountain Game Land** – Ashe County
- Six-day-per-week area.
 - **Gun Either-Sex Deer Season: Dec. 26 – Jan. 1 (conservative season).**
 - Horseback riding, including all equine species, is prohibited except on designated trails and allowed only from May 16 through August 31 and on Sundays only from September 1 through October 31. All horseback riding is prohibited from November 1 through May 15.

- Pungo River Game Land** – Hyde County
- Six-day-per-week area.
 - Gun Either-Sex Deer Season: Oct. 14 – Jan. 1 (maximum season).

- Rendezvous Mountain State Forest Game Land** – Wilkes County
- **Three-day-per-week area.**
 - **Gun Either-Sex Deer Season: Open days during Dec. 20 – Jan. 1 (conservative season).**
 - **Bear Hunting is prohibited.**

- Rhodes Pond Game Land** – Cumberland and Harnett counties
- Permit-only area. (Apply at ncwildlife.org/permithunt.)
 - Swimming is prohibited.

- Roanoke Island Marshes Game Land** – Dare County
- Permit-only area. (Apply at ncwildlife.org/permithunt.)

- Roanoke River Wetlands Game Land** – Bertie, Halifax, Martin and Northampton counties
- Permit-only area. (Apply at ncwildlife.org/permithunt.)
 - Vehicles are prohibited on roads or trails, except those vehicles operated on official Wildlife Resources Commission business or by permit holders.
 - Camping is restricted to Sept. 1 – Feb. 28 and March 31 – May 14 in areas both designated and posted as camping areas. (Camping is allowed anytime within 100 yards of the Roanoke River.)

- Robeson Game Land** – Robeson County
- Three-day-per-week area.
 - **Gun Either-Sex Deer Season: Open days during Oct. 14 – Jan. 1 (maximum season).**

- Rockfish Creek Game Land** – Hoke County
- Three-day-per-week area.
 - Gun Deer Season: Open days during Nov. 11 – Dec. 9
 - Archery Season: Open days during Sept. 9 – Oct. 27
 - Blackpowder Season: Open days during Oct. 28 – Nov. 8
 - Gun Either-Sex Deer Season: Dec. 9 (introductory season)
 - The use of dogs for hunting deer is prohibited.
 - Turkey hunting is by permit only. (Apply at ncwildlife.org/permithunt.)
 - Taking fox squirrels is prohibited.
 - Target shooting is prohibited.

- Rocky Run Game Land** – Onslow County
- Permit-only area. (Apply at ncwildlife.org/permithunt.)

- Sampson Game Land** – Sampson County
- Three-day-per-week area.
 - Gun Either-Sex Deer Season: Open days during Oct. 14 – Jan. 1 (maximum season).
 - Target shooting is prohibited.

- Sandhills Game Land** – Hoke, Moore, Richmond and Scotland counties
- Three-day-per-week area.
 - Gun Deer Season: Open days during Nov. 11 – Dec. 9, except on the field-trial grounds, where the season is the open days during Nov. 13 – Nov. 25.
 - Archery Season: Open days during Sept. 9 – Oct. 27 and Dec. 11 – Jan. 1 except on the field trial grounds where the archery season is open days during Sept. 9 – Oct. 27.
 - Blackpowder Season: Open days during Oct. 28 – Nov. 8 and Dec. 11 – Jan. 1 except on the field trial grounds where the blackpowder season is open days during Oct. 28 – Nov. 11 (Deer of either sex may be taken on these days.)
 - Gun Either-Sex Deer Season: By permit only. (Apply at ncwildlife.org/permithunt.)
 - Squirrel (fox and gray) hunting on the field-trial grounds is allowed on open days during Nov. 13 – Nov. 25.
 - Opossum and raccoon hunting on the field-trial grounds is allowed on open days during Oct. 16 – Feb. 28.
 - Rabbit hunting on the field-trial grounds will be allowed on open days during Nov. 11 – Nov. 25.
 - Dove hunting on the field-trial grounds will be prohibited from the third Sunday in September through the remainder of the hunting season.
 - Waterfowl hunting on the field trial grounds is allowed on open days during any waterfowl season.

- Except for the opossum, raccoon, rabbit, squirrel, waterfowl and deer seasons (including bow and arrow, blackpowder and gun) specifically indicated above for the field-trial grounds, the field-trial grounds are CLOSED to all hunting during the period of Oct. 22 – March 31. This restriction does not apply to permit hunts offered to disabled sportsman.
- Horseback riding is prohibited on the J. Robert Gordon Field-Trial Area Oct. 22 – March 31, except by people riding in field trials.
- In addition to the regular open days, waterfowl may be taken on the opening and closing days of the applicable waterfowl seasons.
- Turkey hunting is by permit only. (Apply at ncwildlife.org/permithunt.)
- Dog training is prohibited on the field trial grounds. Elsewhere, dog training is restricted to Mondays, Wednesdays and Saturdays from Oct. 1 – April 1.
- Swimming in lakes is not permitted.
- Camping is restricted to Sept. 1 – Feb. 28 and March 31– May 14 in designated camping areas.
- It is illegal to hunt quail and woodcock and to train dogs on birds on areas posted with signs stating “CURE Wildlife Game Lands, Special Regulations Apply” without a permit. All of these posted areas are on that part of the game land east of U.S. 1 in Richmond County or east of S.R. 1001 and west of U.S. 15/501 in Scotland County.
- All of Sandhills Game Land in Moore County is located within the Sandhill Township (See Moore County “local laws” for rifle caliber restrictions and additional restrictions.)
- Target shooting is prohibited except on the John F. Lentz Hunter Education Complex.

Sandy Creek Game Land – Franklin and Nash Counties

- Six-day-per-week area.
- Gun Either-Sex Deer Season: Oct. 14 – Oct. 20 and Dec. 26 – Jan. 1 (moderate season).
- Horseback riding, including all equine species, is prohibited.
- Dogs may not be used for hunting deer.

Sandy Mush Game Land – Buncombe and Madison County

- Three-day-per-week area.
- Gun Either-Sex Deer Season: Dec. 9 (introductory season).
- Horseback riding is prohibited except on designated trails May 16 – Aug. 31, and all horseback riding is prohibited from Sept. 1 – May 15. This rule includes all equine species.
- Dogs may only be trained on Mondays, Wednesdays and Saturdays and only during that time period when dog training is allowed on game lands.
- Dove hunting is by permit only for the first four open days of the dove season. (Apply at ncwildlife.org/permithunt.)

Second Creek Game Land – Rowan County

- Permit-only area. (Apply at ncwildlife.org/permithunt.)

Shocco Creek Game Land – Franklin, Halifax, Nash and Warren counties

- Six-day-per-week area.
- Gun Either-Sex Deer Season: Oct. 14 – Oct. 20 and Dec. 26 – Jan. 1 (moderate season).
- Horseback riding, including all equine species, is prohibited.

South Mountains Game Land – Burke, Cleveland, McDowell and Rutherford counties

- Six-day-per-week area.
- Gun Deer Season: Nov. 20 – Dec. 9 in all portions of the game land.
- Gun Either-Sex Deer Season: Dec. 9 (introductory season) in all portions of the game land.
- Blackpowder Season: Oct. 2 – Oct. 14 in all portions of the game land.
- Archery Season: Sept. 9 – Sept. 30, Oct. 16 – Nov. 18, and Dec. 11 – Jan. 1 in all portions of the game land.

- Horseback riding is prohibited, except on designated trails May 16 – Aug. 31, and all horseback riding is prohibited from Sept. 1 – May 15. This rule includes all equine species.
- That part of South Mountains Game Land in Cleveland, McDowell and Rutherford counties is closed to all grouse, quail and woodcock hunting and all bird dog training.

Stones Creek Game Land – Onslow County

- Six day-per-week area.
- Swimming in all lakes is prohibited.
- Gun Either-Sex Deer Season Oct. 14 – Jan. 1 (maximum season).
- Waterfowl may be taken only on Tuesdays and Saturdays; on Thanksgiving, Christmas, New Year’s and Martin Luther King Jr. days; and on the opening and closing days of the statewide waterfowl season.
- Dogs may be used for hunting deer on Tuesdays, Thursdays and Saturdays only.
- Target shooting is prohibited.
- Geocaching is allowed only on closed days for taking bear, deer, turkey, and waterfowl.

Suggs Mill Pond Game Land – Cumberland and Bladen counties

- Permit-only area. (Apply at ncwildlife.org/permithunt.)
- Camping is restricted to Sept. 1 – Feb. 28 and March 31 – May 14 in areas both designated and posted as camping areas.
- During scheduled permit hunts, only hunters and trappers with permits may enter the game land, EXCEPT the public may use Campground Road to access the pond at the dam.
- **The use of vessels on managed waterfowl impoundments on Suggs Mill Pond Game Land is restricted to permitted waterfowl hunters from November 1- March 15 and, except for Sundays, from November 1- January 31 on Suggs Mill Pond Lake and Little Singletary Lake.**

Sutton Lake Game Land – Brunswick and New Hanover counties

- Six-day-per-week area.
- Gun Either-Sex Deer Season: Dec. 26 – Jan. 1 (conservative season).
- Target shooting is prohibited.
- Discharge of centerfire rifles is prohibited.

Tar River Game Land – Edgecombe County

- Permit-only area. (Apply at ncwildlife.org/permithunt.)

Texas Plantation Game Land – Tyrrell County

- Permit-only area. (Apply at ncwildlife.org/permithunt.)

Three Top Mountain Game Land – Ashe County

- Six-day-per-week area.
- Gun Either-Sex Deer Season: Dec. 26 – Jan. 1 (conservative season).
- Horseback riding is prohibited. This includes all equine species.

Thurmond Chatham Game Land – Alleghany and Wilkes counties

- Six-day-per-week area.
- Gun Either-Sex Deer Season: Nov. 18 – Nov. 24 and Dec. 26 – Jan. 1 (moderate season).
- Horseback riding is prohibited except on designated trails May 16 – Aug. 31, and all horseback riding is prohibited from Sept. 1 – May 15. This rule includes all equine species. Participants age 16 or older must obtain a game lands license prior to horseback riding on this area.

Tillery Game Land – Halifax County

- Six-day-per-week area.
- Gun Either-Sex Deer Season: Oct. 14 – Oct. 20 and Dec. 26 – Jan. 1 (moderate season).
- Horseback riding, including all equine species, is prohibited.
- Dogs may not be used for hunting deer.
- Turkey hunting is by permit only. (Apply at ncwildlife.org/permithunt.)

Toxaway Game Land – Transylvania county

- Six-day-per-week area.
- Gun Either-Sex Deer Season: Dec. 9 (introductory season).
- Horseback riding is prohibited, except on designated trails May 16 – Aug. 31, and all horseback riding is prohibited from Sept. 1 – May 15. This rule includes all equine species.

Uwharrie Game Land – Davidson, Montgomery and Randolph counties

- Six-day-per-week area.
- Gun Either-Sex Deer Season: Nov. 11 – Nov. 17 and Dec. 26 – Jan. 1 (moderate season).
- On the posted waterfowl impoundment, waterfowl may be taken only on Mondays, Wednesdays and Saturdays; on Thanksgiving, Christmas, New Year’s and Martin Luther King Jr. days; and on the opening and closing days of the applicable waterfowl seasons.
- **Target shooting is prohibited except on the Flintlock Valley Shooting Range.**

Vance Game Land – Vance County

- Six-day-per-week area.
- Gun Either-Sex Deer Season: Oct. 14 – Jan. 1 (maximum season).
- The use of dogs, centerfire rifles and handguns for hunting deer is prohibited on the Nutbush Peninsula Tract.

Van Swamp Game Land – Beaufort and Washington counties

- Six-day-per-week area.
- Gun Either-Sex Deer Season: Oct. 14 – Jan. 1 (maximum season).
- Bear may only be taken on Monday, Tuesday and Wednesday of the November Bear Season and Monday, Tuesday and Wednesday of the second week of the December Bear Season.

Voice of America Game Land – Beaufort County

- **Permit-only area (Apply at ncwildlife.org/permithunt.)**

Whitehall Plantation Game Land – Bladen County

- Permit-only area. (Apply at ncwildlife.org/permithunt.)
- Camping is restricted to Sept. 1 – Feb. 28 and March 31 – May 14 in areas both designated and posted as camping areas.

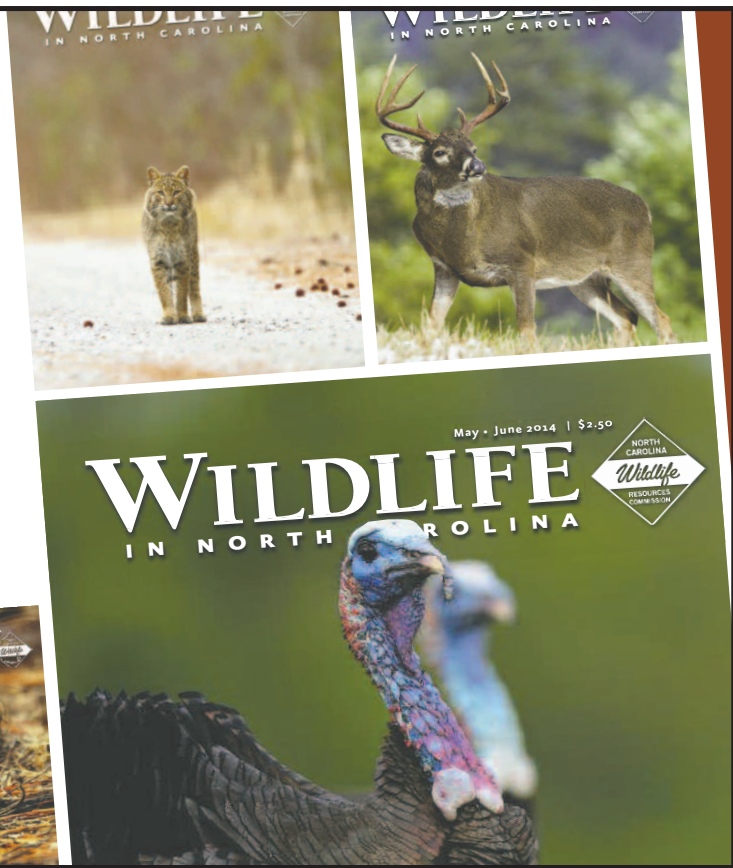
White Oak River Game Land – Onslow County

- Three-day-per-week area.
- Gun Either-Sex Deer Season: Open days during Oct. 14 – Jan. 1 (maximum season).
- Prior to Oct. 1, waterfowl may be taken only on Tuesdays and Saturdays; and on the opening and closing days of the statewide waterfowl hunting seasons on the posted impoundments.
- Beginning on the first open waterfowl season day in October and through the end of the waterfowl season, waterfowl hunting is by permit only on posted waterfowl impoundments.
- Waterfowl hunting on the Huggins and Morton tracts is by permit only for the entire waterfowl season. (Apply at ncwildlife.org/permithunt.)
- A hunting opportunity permit is needed to access Hargett Avenue and Sloan Farm Road.
- On the Huggins and Morton tracts, dogs may not be used to hunt deer, there is no discharge of centerfire rifles allowed, AND hunting is by permit only. (Apply at ncwildlife.org/permithunt.)
- Turkey hunting is by permit only. (Apply at ncwildlife.org/permithunt.)

William H. Silver Game Land – Haywood County

- **Six-day-per-week area**
- **Gun Either-Sex Deer Season: Dec. 9 (introductory season)**

If you love the outdoors then you're going to love *Wildlife in North Carolina*. Each issue is filled with articles and photographs focusing on fishing, hunting, conservation and other popular activities in our great state. **Subscribe now.**



8 issues for \$12 a year
 1-800-786-2721
ncwildlife.org

