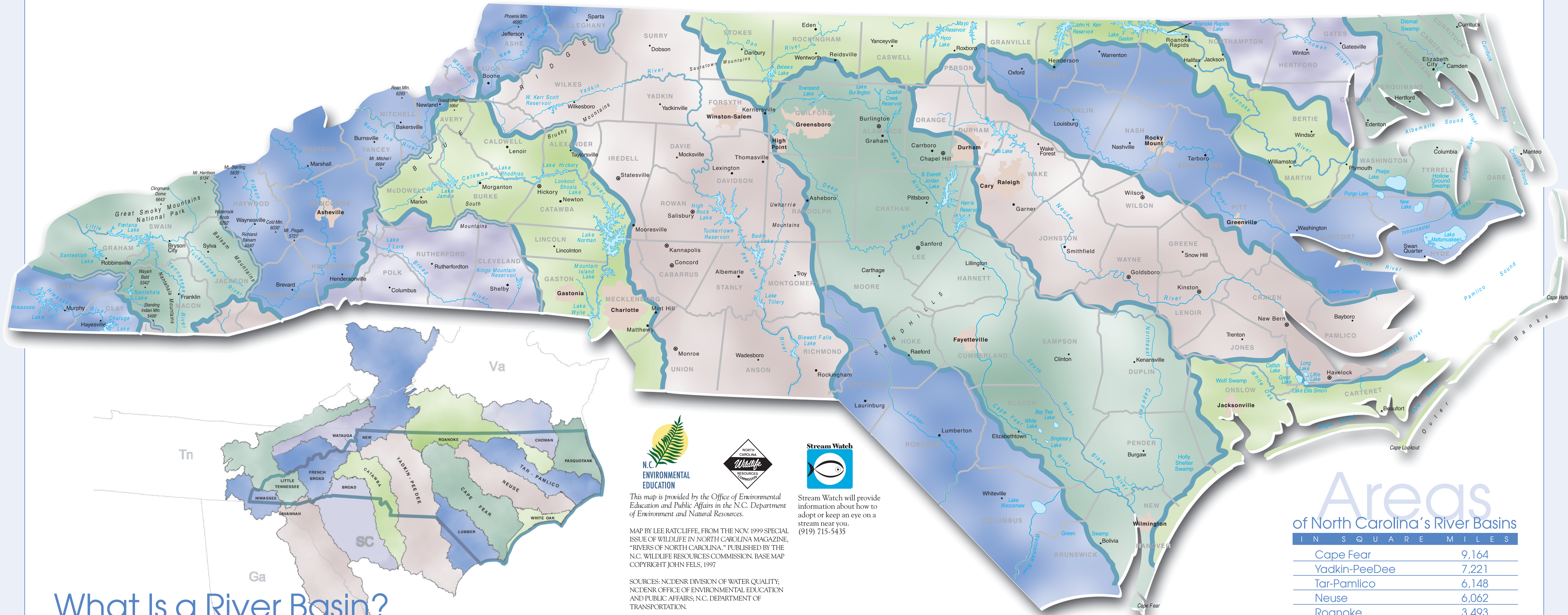


North Carolina's River Basins



What Is a River Basin?

A river basin encompasses all the land surface drained by many finger-like streams and creeks flowing downhill into one another and eventually into one river, which forms its artery and backbone. As a bathtub catches all the water that falls within its sides and directs the water out its drain, a river basin sends all the water falling within its surrounding ridges into its system of creeks and streams to gurgle and splash downhill into its river and out to an estuary or the ocean.

The shape of a river basin comes from the collective and opposing forces of mountain-building and weathering. Geological forces push mountains up into the sky, and weathering from rain and wind wears mountainsides into hillsides and valleys and plains. A jigsaw puzzle of river basins reflects in three dimensions the outcome of these combined forces molding the landscape.

As an artery connects the parts of a body to one another, so a river threads together the creeks and streams, valleys and hills, springs and lakes that share a common assembly of water. What happens to the surface or underground water in one part of a river basin will find its way to other parts. If water is diverted out of its usual course in one part of a river basin, other parts will know its absence. A river basin comes closer than any other defined area of land, with the exception of an isolated island, to meeting the definition of an ecosystem in which all things are connected and interdependent.

N.C. ENVIRONMENTAL EDUCATION

WILDLIFE RESOURCES COMMISSION

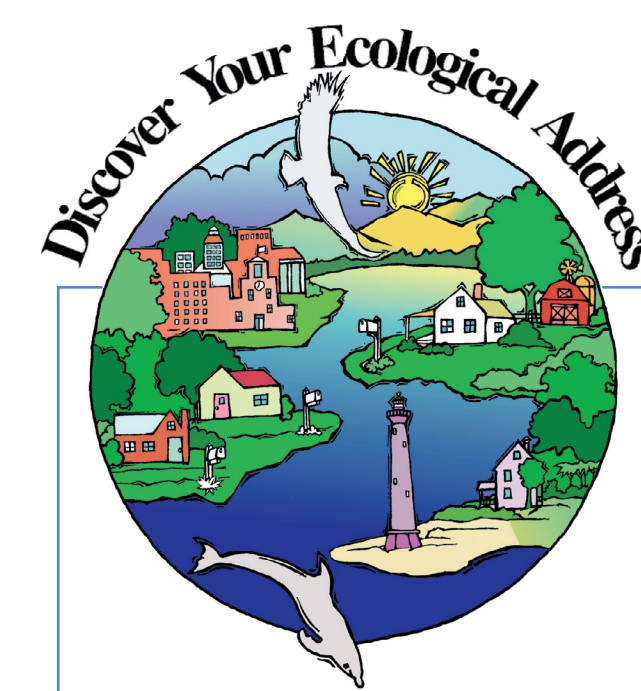
Stream Watch

This map is provided by the Office of Environmental Education and Public Affairs in the N.C. Department of Environment and Natural Resources.

MAP BY LEE RATCLIFFE, FROM THE NOV. 1999 SPECIAL ISSUE OF WILDLIFE IN NORTH CAROLINA MAGAZINE, "RIVERS OF NORTH CAROLINA," PUBLISHED BY THE N.C. WILDLIFE RESOURCES COMMISSION. BASE MAP COPYRIGHT JOHN FELLS, 1997

SOURCES: NCDENR DIVISION OF WATER QUALITY; NCDENR OFFICE OF ENVIRONMENTAL EDUCATION AND PUBLIC AFFAIRS; N.C. DEPARTMENT OF TRANSPORTATION.

Stream Watch will provide information about how to adopt or keep an eye on a stream near you. (919) 715-5435



Discover Your Ecological Address!

Your river basin is one part of your ecological address. To learn more about your ecological address, contact the Office of Environmental Education and Public Affairs at (919) 733-0711 or check out the Web site at <http://www.eenorthcarolina.org>

Areas of North Carolina's River Basins

IN SQUARE MILES

Cape Fear	9,164
Yadkin-PeeDee	7,221
Tar-Pamlico	6,148
Neuse	6,062
Roanoke	3,493
Pasquotank	3,366
Lumber	3,329
Catawba	3,285
French Broad	2,829
Little Tennessee	1,797
Broad	1,514
White Oak	1,382
Chowan	1,298
New	754
Hiwassee	644
Watauga	205
Savannah	171
Amazon*	2,300,000
Mississippi*	1,240,000

*for comparison

Funded through a Walmart Stormwater Compliance Grant. 2010. 7000 copies of this public document were printed at a cost of \$2,481.46 or \$0.35 per copy. Printed on recycled paper.