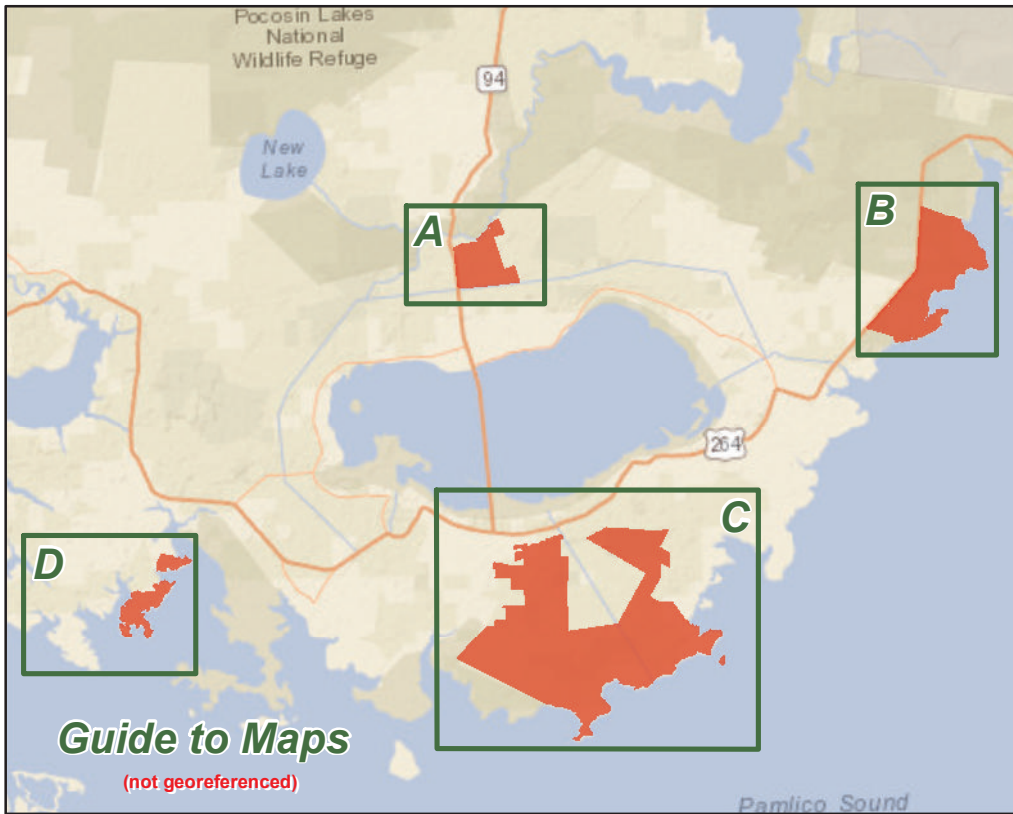


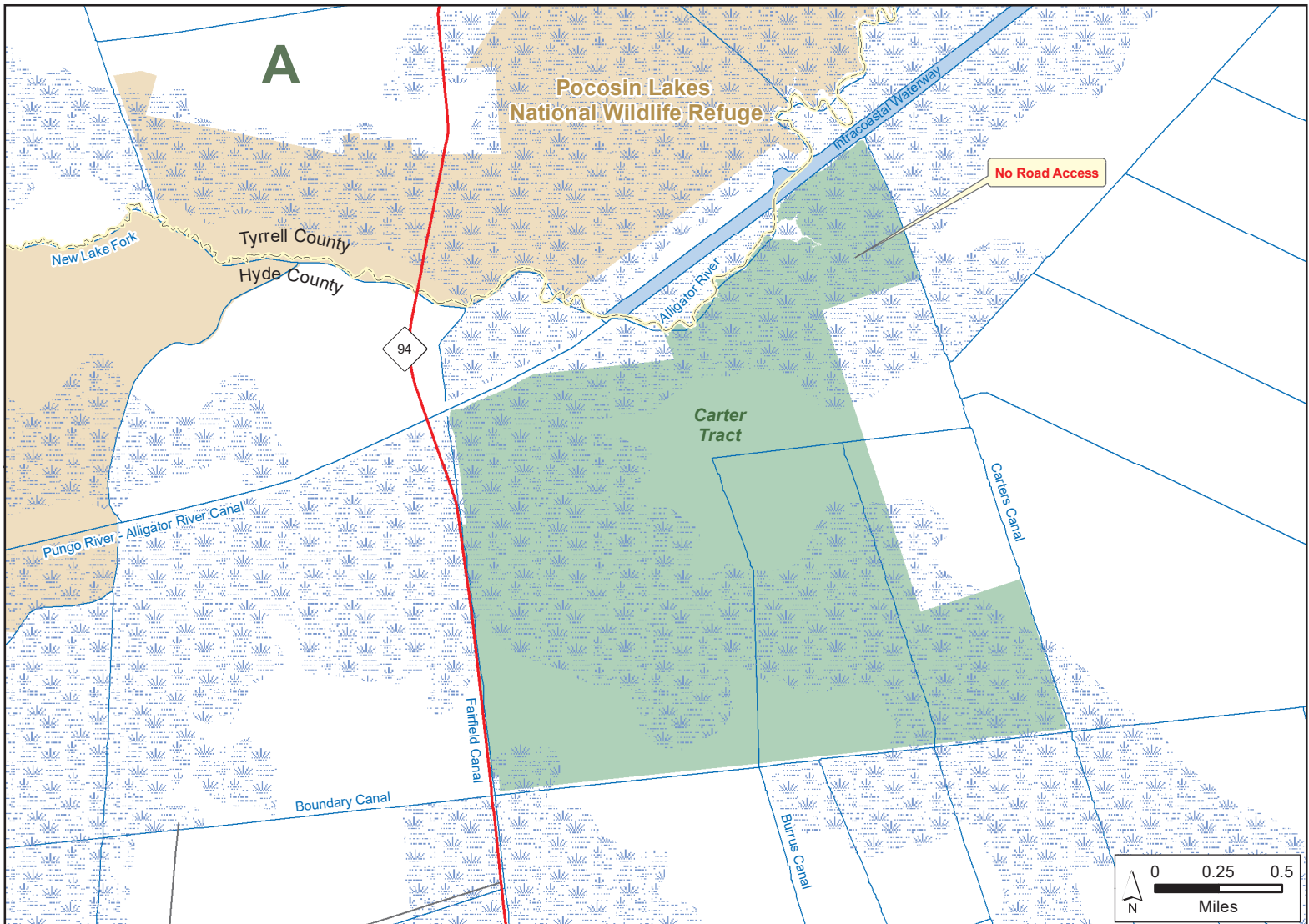
# GULL ROCK GAME LAND

N.C. Wildlife Resources Commission  
Hyde County (29,720 total acres)



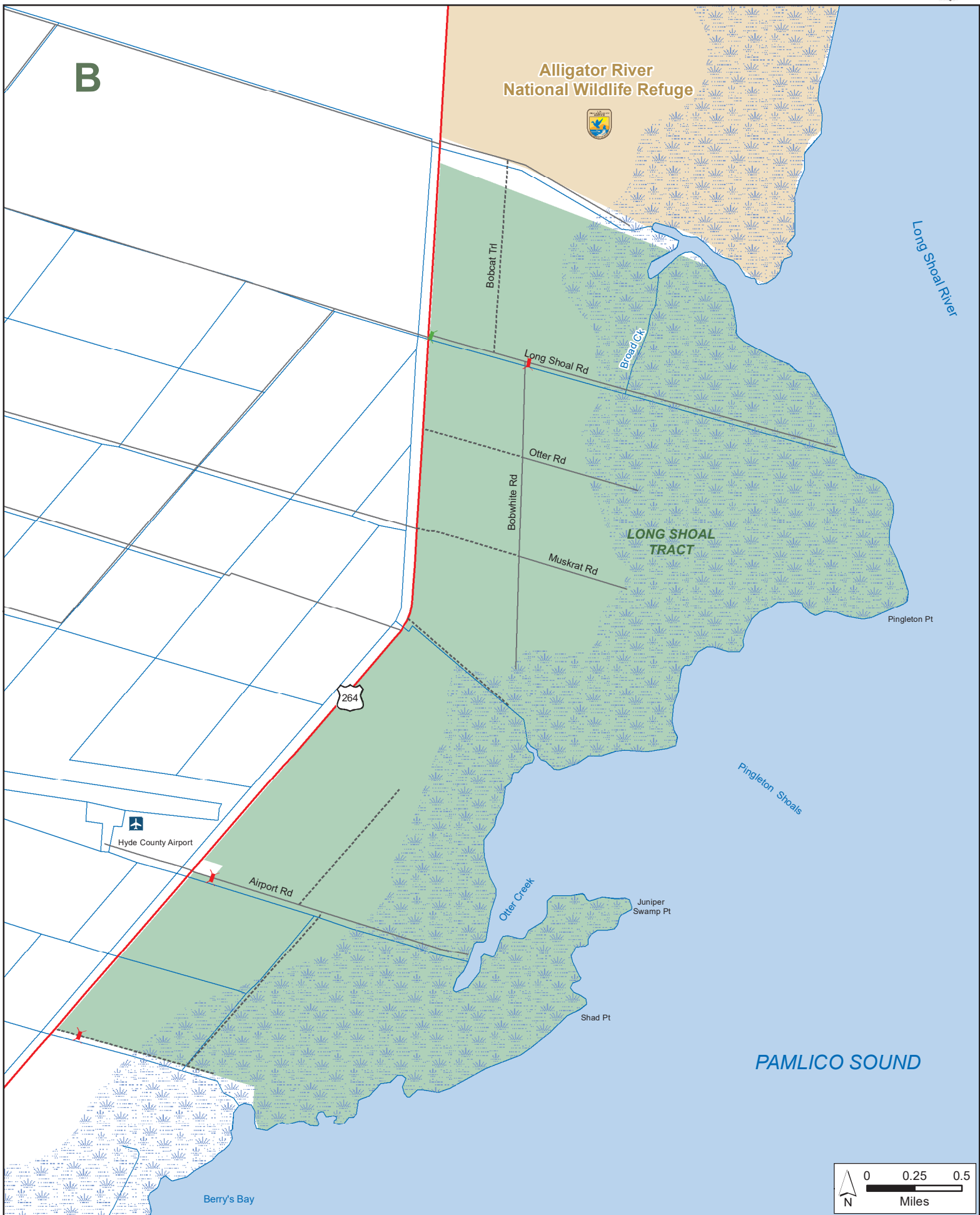
- Designated Camping Area
  - Disabled Sportsman Blind
  - Gate Open Sep. 1 - Mar. 1, Apr. 1 - End of Turkey Season
  - Gate Closed During Turkey Season
  - Permanently Closed Gate
  - Public Parking
  - Non-WRC Boating Access
  - Trail
- Game Land Type**
- Bear Management Area
  - Game Land
  - Waterfowl Impoundment
  - Wildlife Refuge (Federal Land)

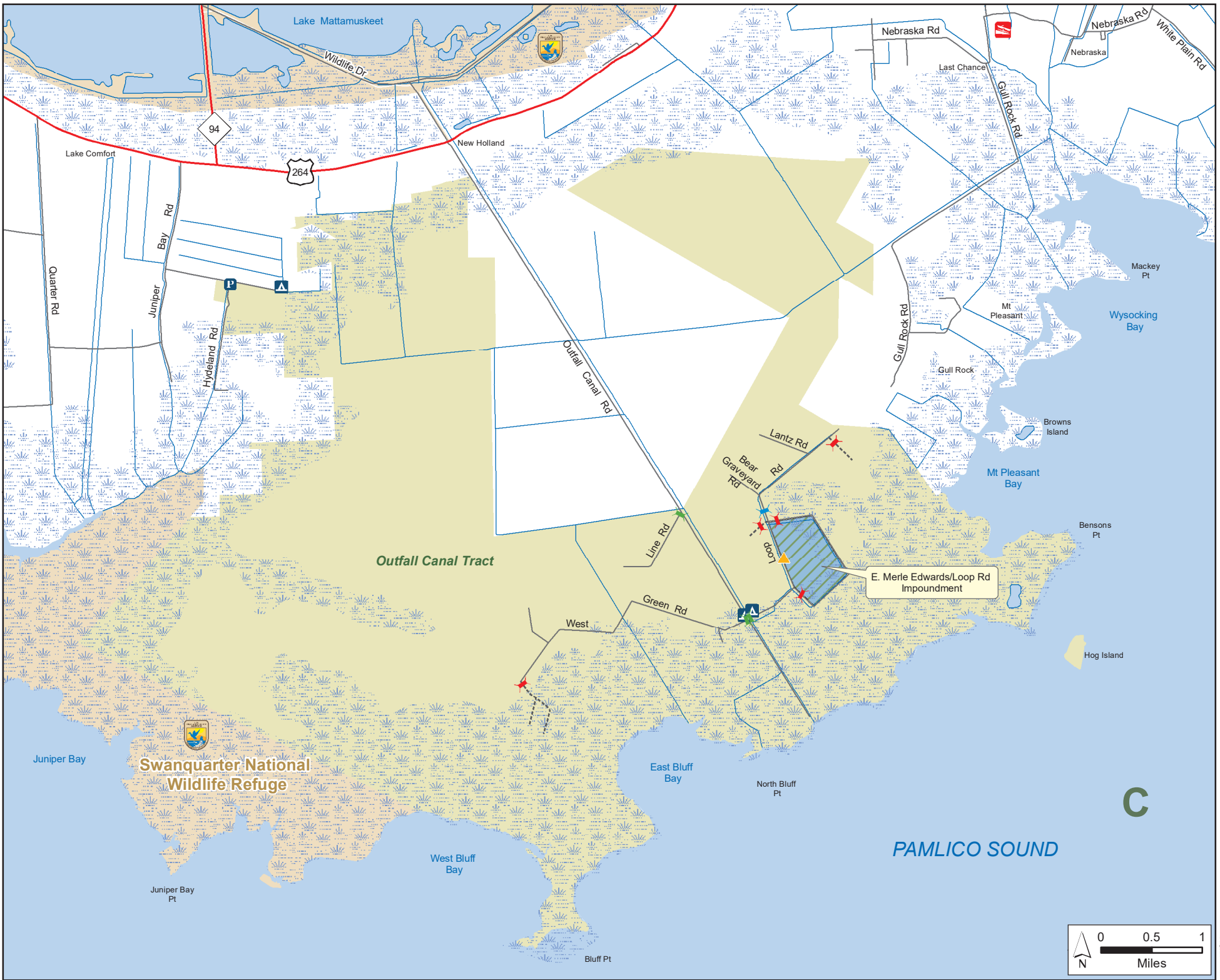
Note: Alligators present in waterfowl impoundments



# GULL ROCK GAME LAND (continued)

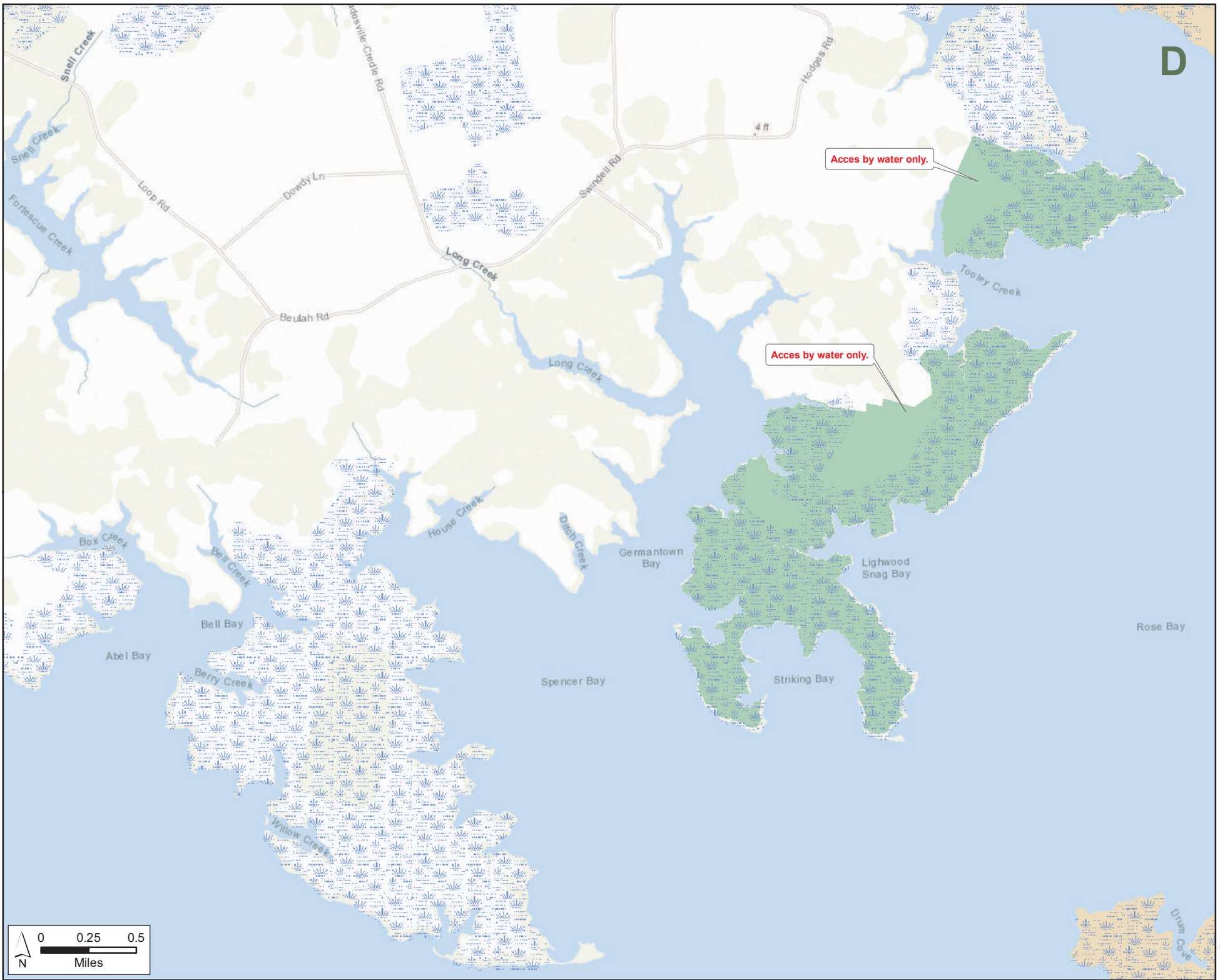
N.C. Wildlife Resources Commission  
Hyde County





**GULL ROCK GAME LAND (continued)**  
 N.C. Wildlife Resources Commission  
 Hyde County





D

Access by water only.

Access by water only.

**GULL ROCK GAME LAND (continued)**  
 N.C. Wildlife Resources Commission  
 Hyde County

