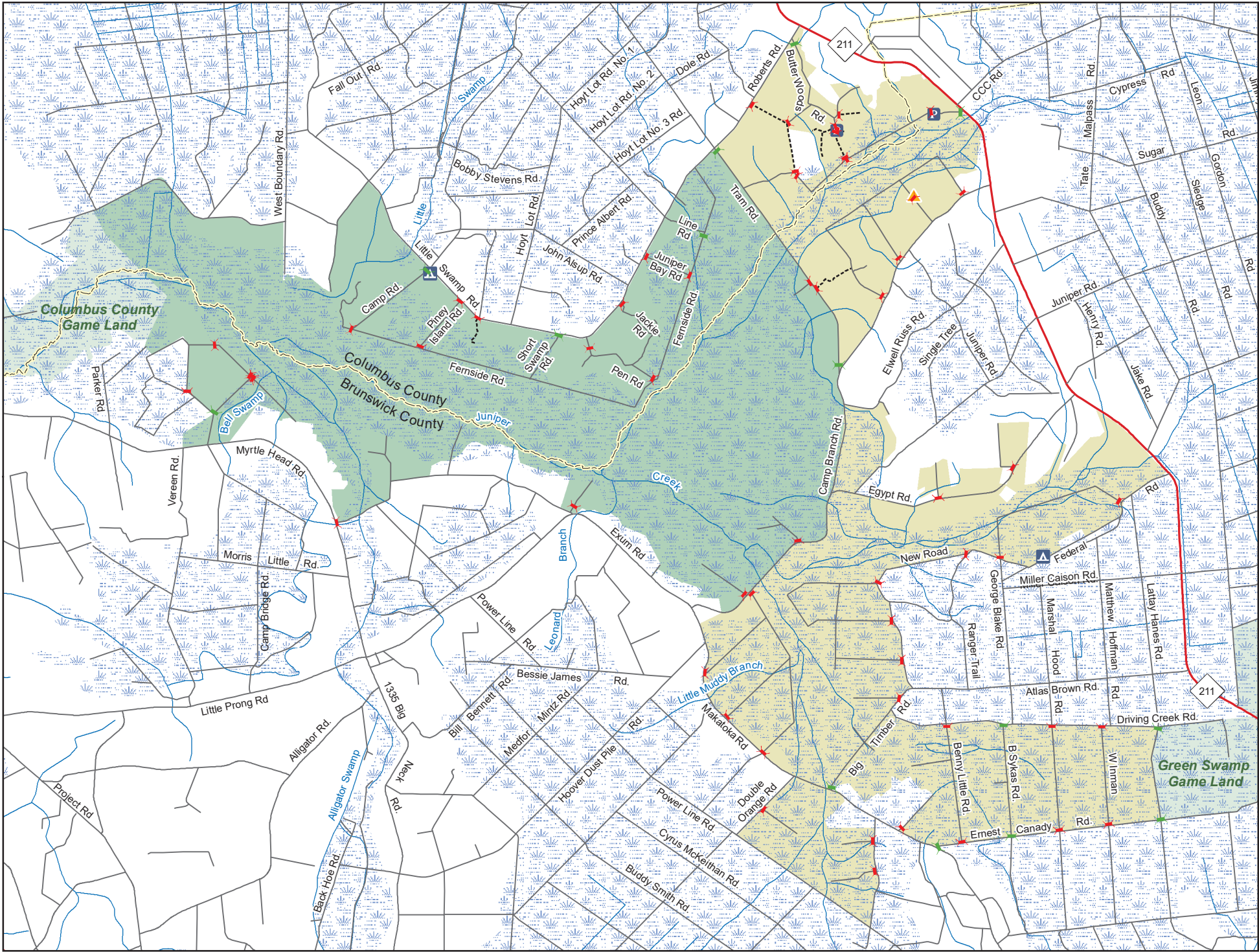


**JUNIPER CREEK GAME LAND**  
 N.C. Wildlife Resources Commission  
 Brunswick and Columbus Counties (20,505 acres)



Designated Camping Area	Gate Open Sep.1 - Mar.1, Apr.1-End Of Turkey Season	Permanently Closed Gate	Bear Management Area	Secondary Road
Disabled Sportsman Blind		Public Parking	Game Land	

