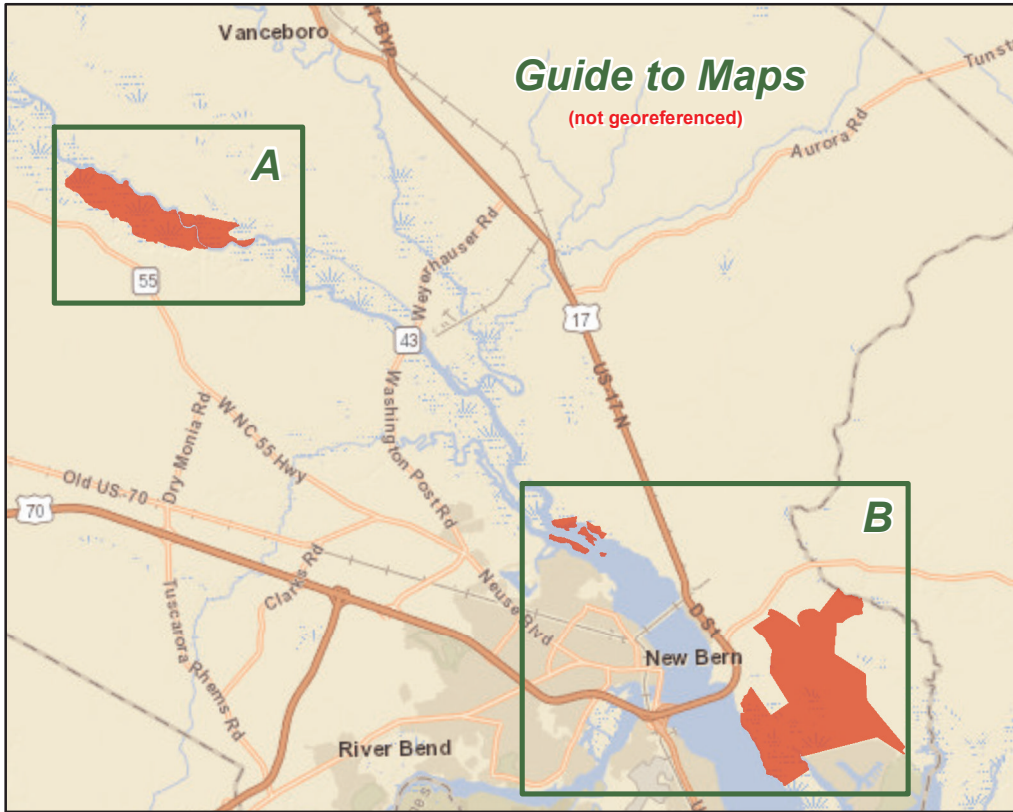


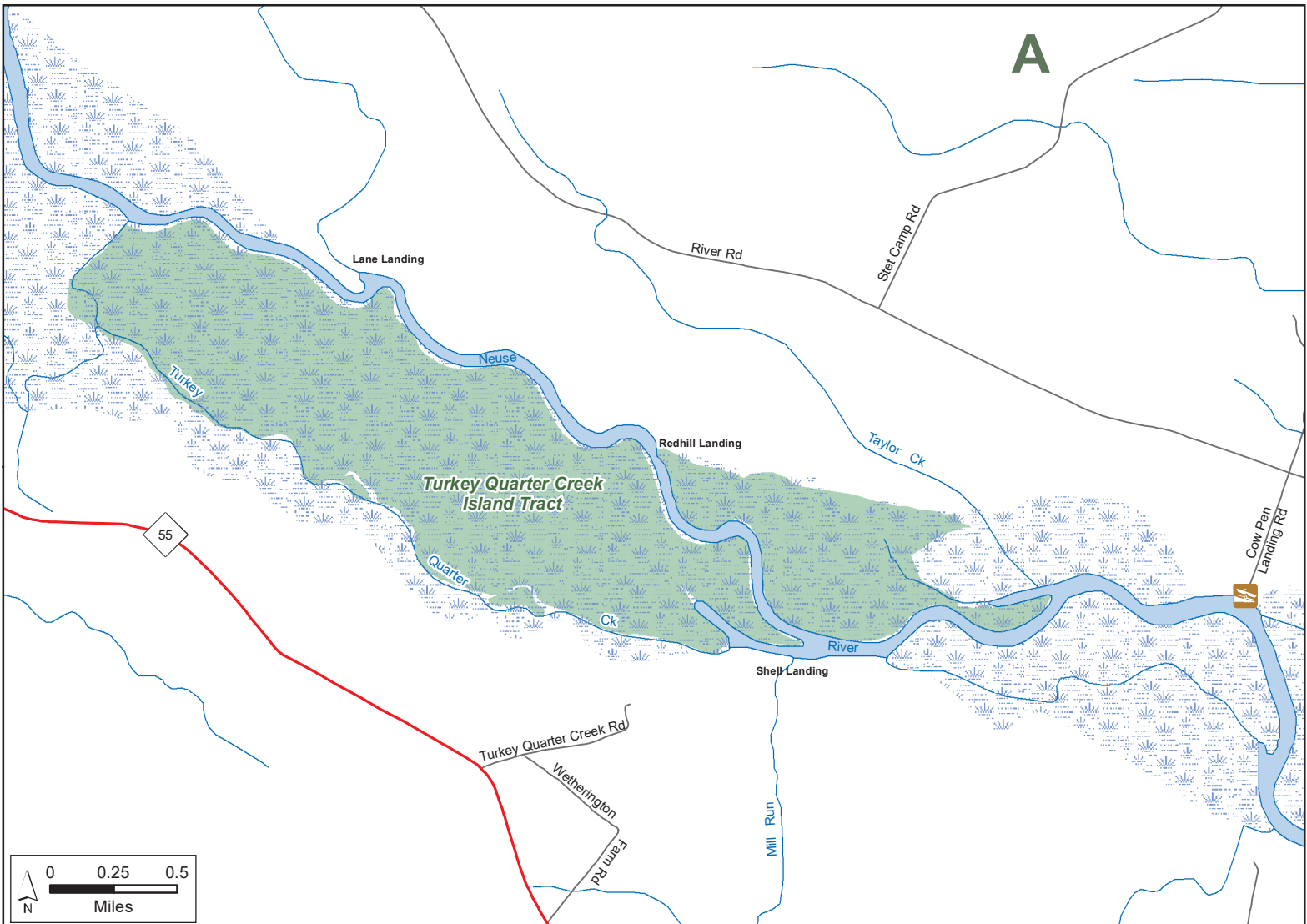
# NEUSE RIVER GAME LAND

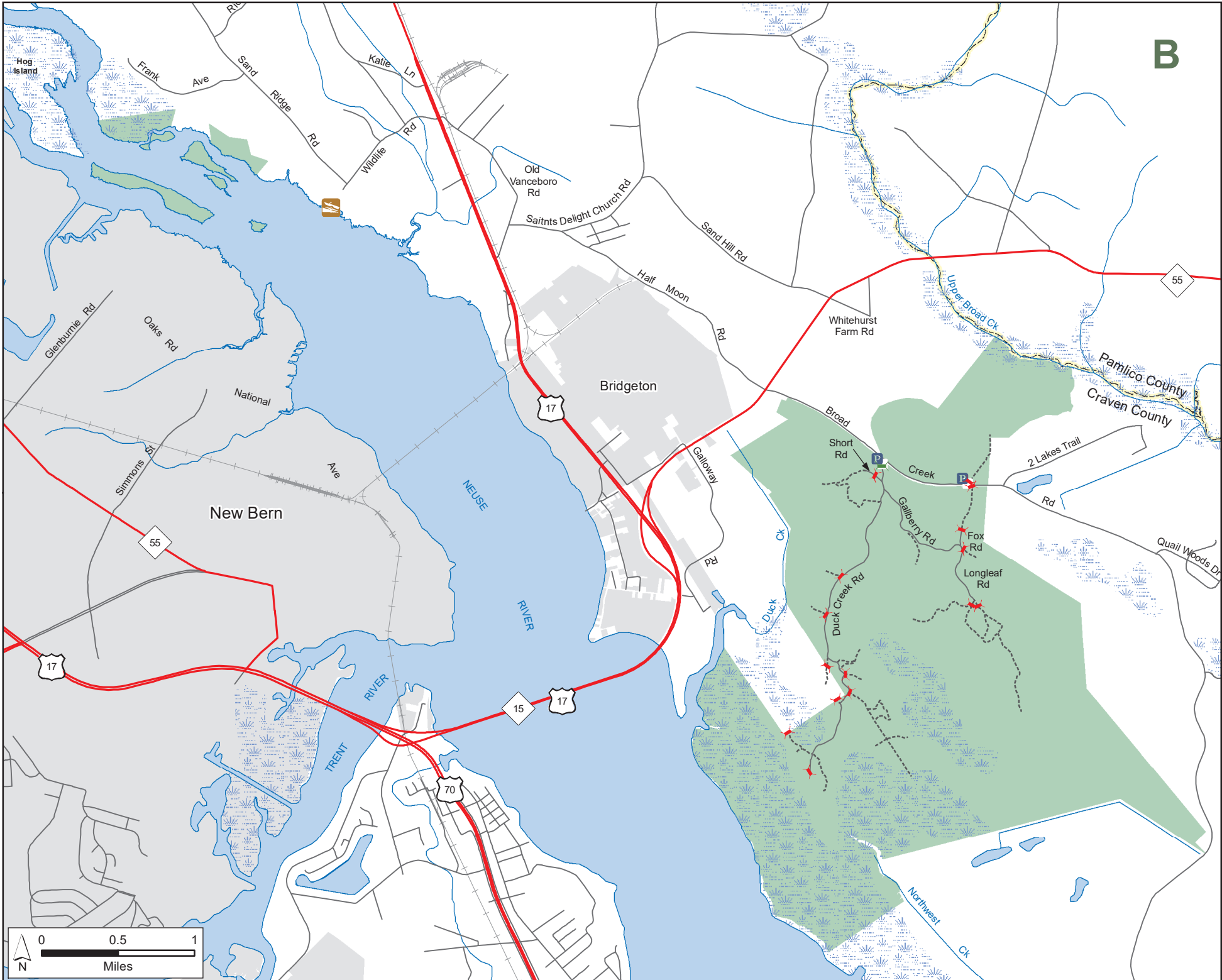
N.C. Wildlife Resources Commission  
Craven County (5,620 total acres)



- Gate Open Sep.1-Mar.1, Apr.1-End of Turkey Season
- Permanently Closed Gate
- Public Parking
- Boating Access
- Secondary Road
- Trail
- Game Land

**NOTE:** Camping is allowed but restricted to within 100 yards of the Neuse River on the Turkey Quarter Creek Island Tract.





B

**NEUSE RIVER GAME LAND (continued)**  
N.C. Wildlife Resources Commission  
Craven County

