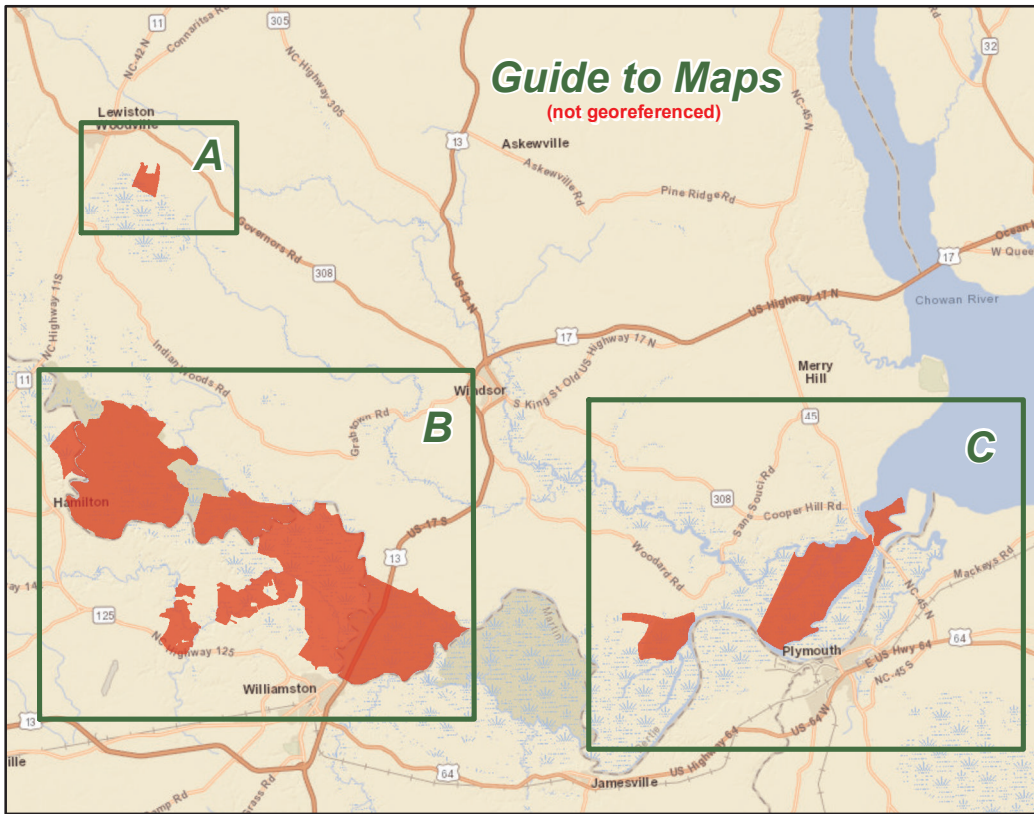
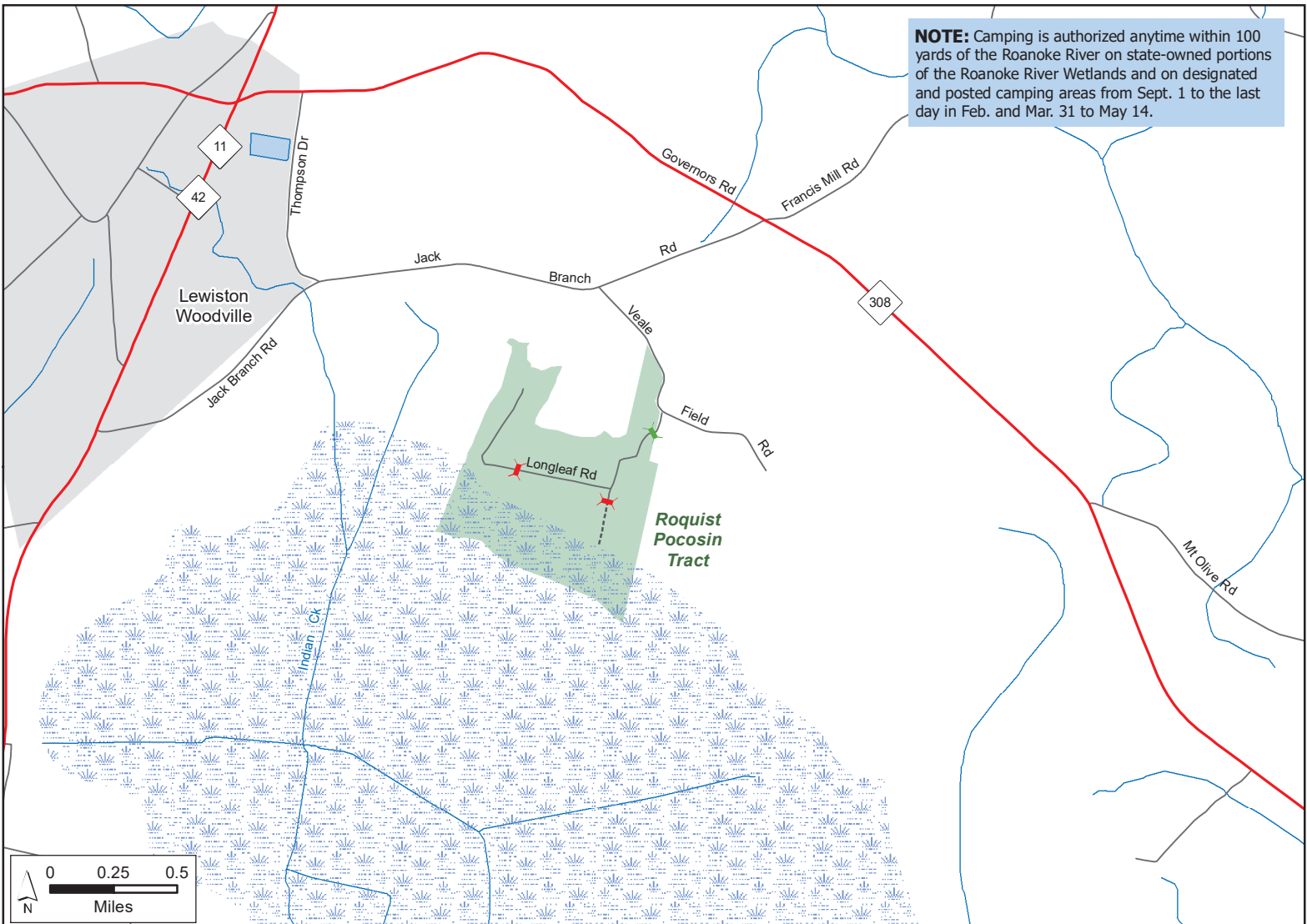


LOWER ROANOKE RIVER WETLANDS GAME LAND

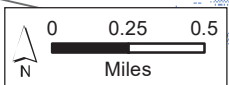
N.C. Wildlife Resources Commission, U.S. Fish & Wildlife Service
Bertie and Martin Counties (31,600 total acres)



- Designated Camping Area
 - Disabled Sportsman Access
 - Disabled Sportsman Blind
 - Gate Open Sep. 1 - Mar. 1, Apr. 1 - End of Turkey Season
 - Permanently Closed Gate
 - Public Parking
 - WRC Boating Access Area
 - Public Fishing Area
 - Disabled Sportsman Access Road
 - Secondary Road
 - Trail
- Game Land Type**
- Game Land
 - Waterfowl Impoundment
 - Wildlife Refuge (Federal Land)
 - No Waterfowl Hunting

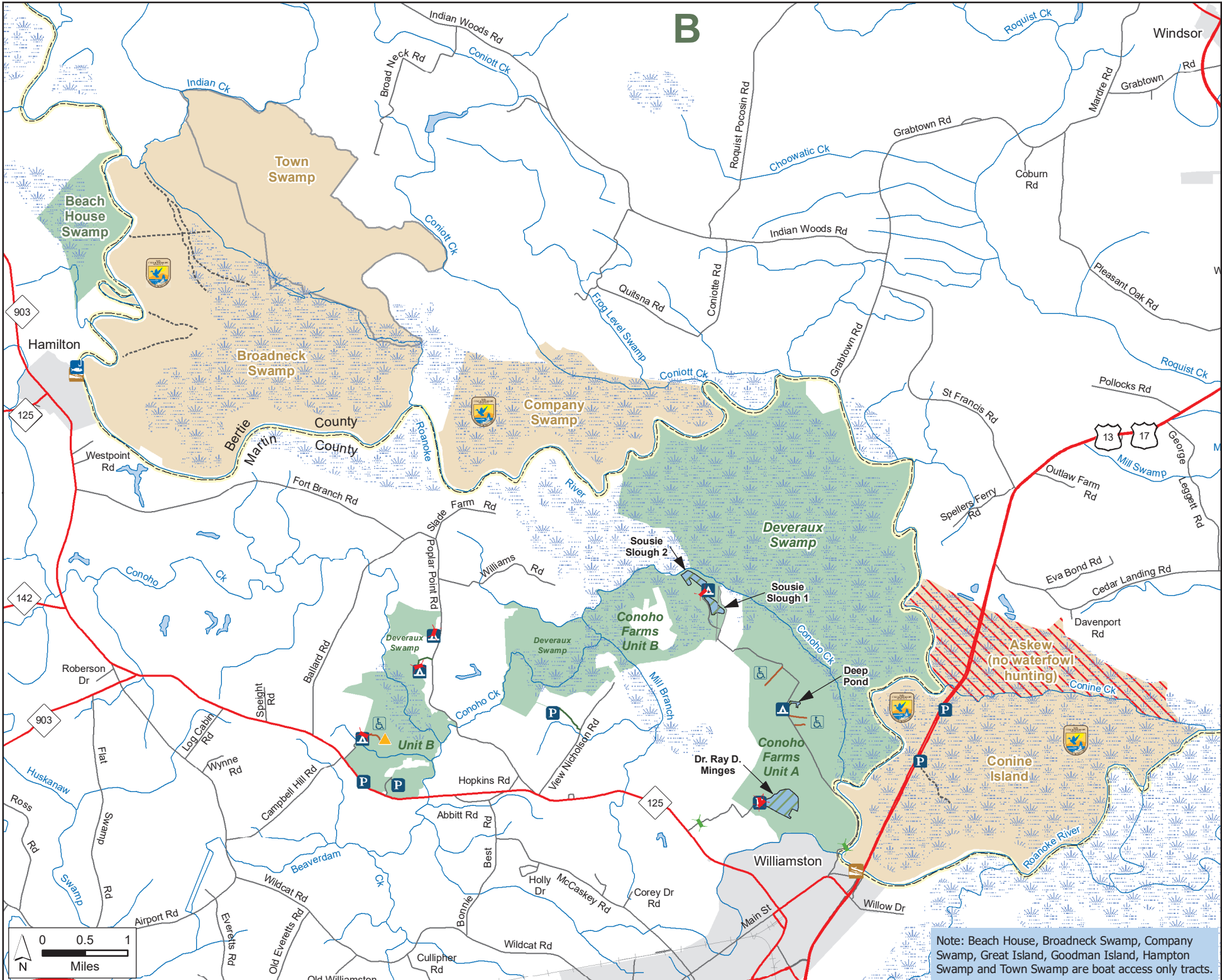


NOTE: Camping is authorized anytime within 100 yards of the Roanoke River on state-owned portions of the Roanoke River Wetlands and on designated and posted camping areas from Sept. 1 to the last day in Feb. and Mar. 31 to May 14.



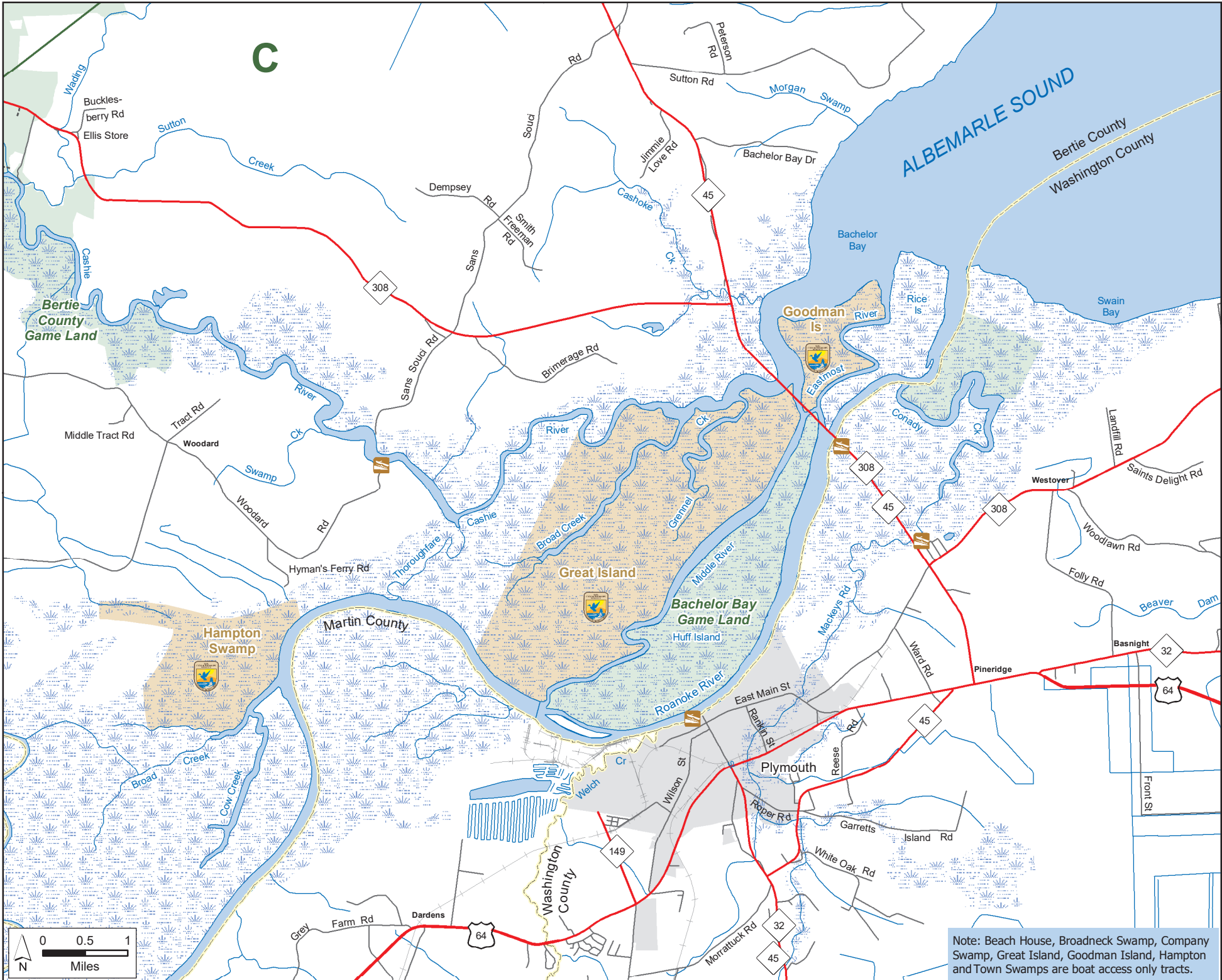
LOWER ROANOKE RIVER WETLANDS GAME LAND (continued)

N.C. Wildlife Resources Commission, U.S. Fish & Wildlife Service
Bertie and Martin Counties



LOWER ROANOKE RIVER WETLANDS GAME LAND (continued)

N.C. Wildlife Resources Commission, U.S. Fish & Wildlife Service
Bertie and Martin Counties



Note: Beach House, Broadneck Swamp, Company Swamp, Great Island, Goodman Island, Hampton and Town Swamps are boat access only tracts.

