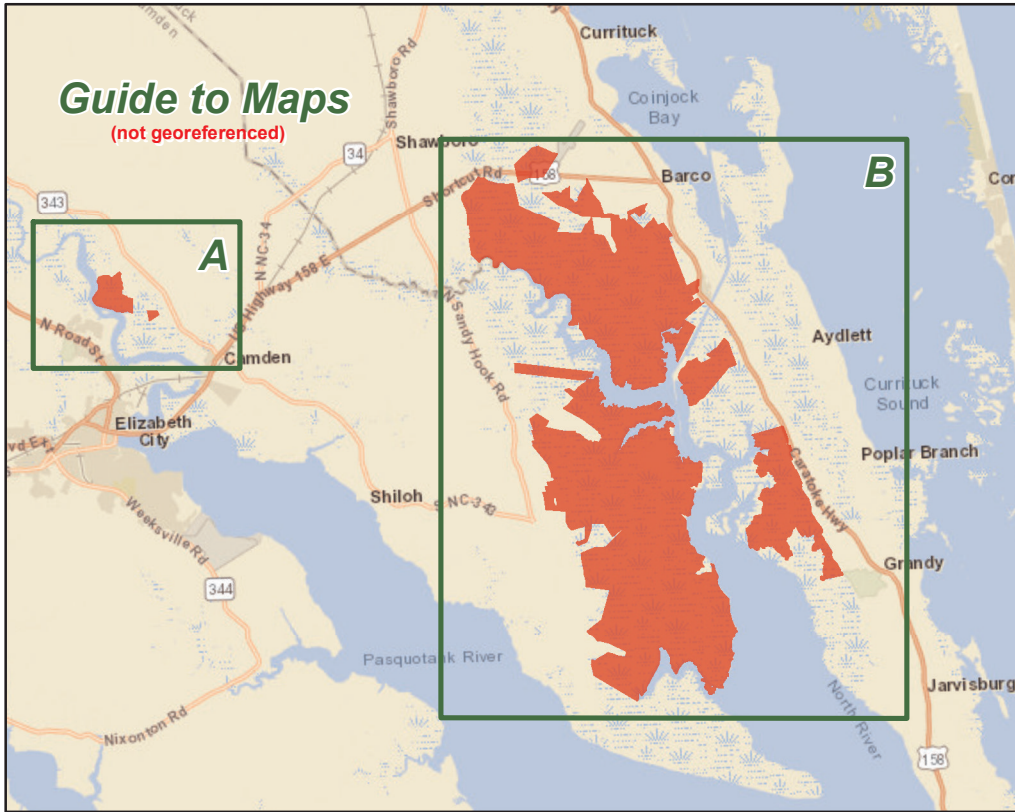
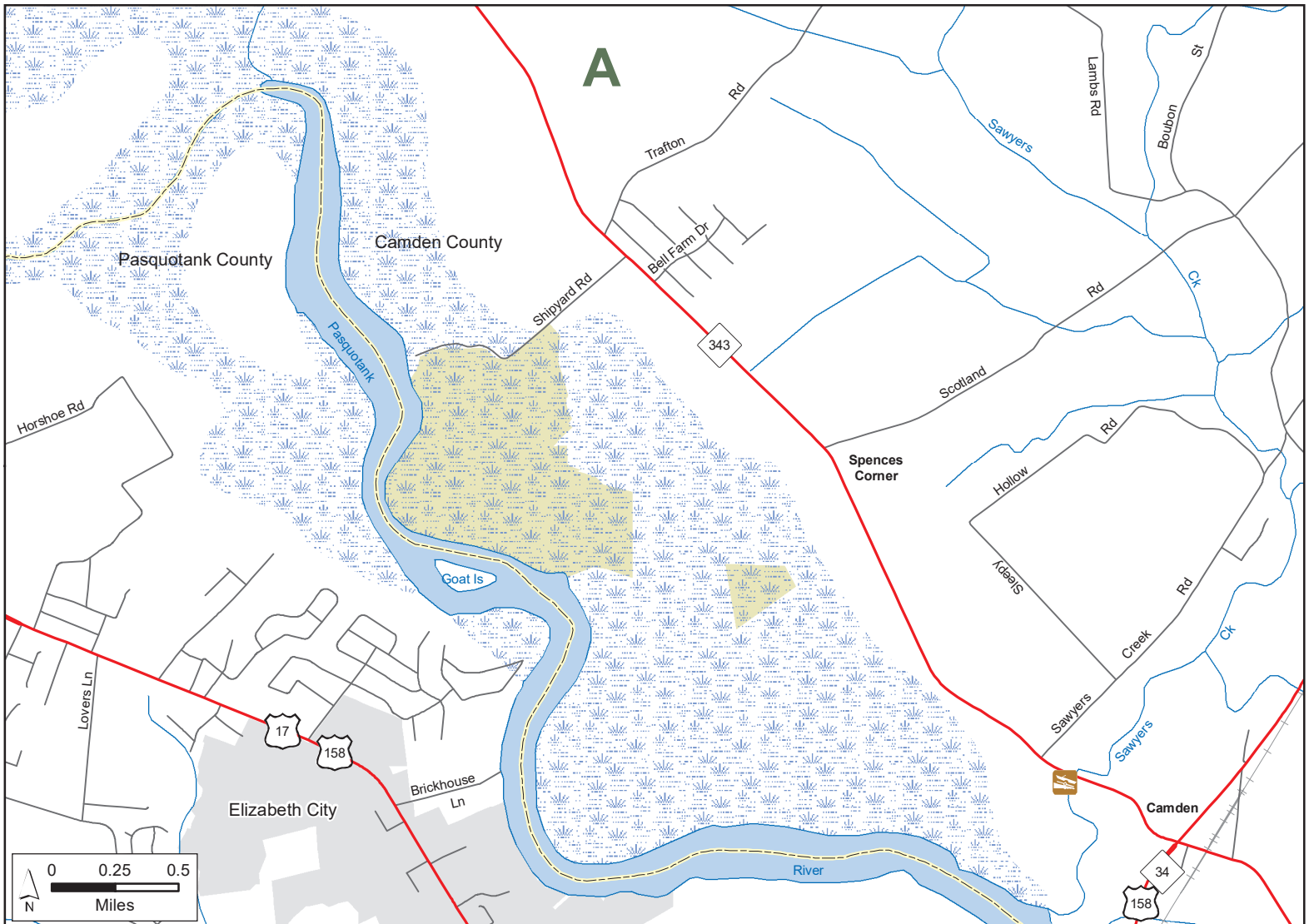


**NORTH RIVER GAME LAND**  
 N.C. Wildlife Resources Commission  
 Camden and Currituck Counties (26,360 total acres)



- Hunter Walk-in
  - Gate Open Sep.1 - Mar.1, Apr.1 - End of Turkey Season
  - Permanently Closed Gate
  - Public Parking
  - Waterfowl Blind
  - Non-WRC Boating Access Area
  - Boating Access Area
  - Secondary Road
  - Trail
- Game Land Type**
- Black Bear Sanctuary
  - Game Land

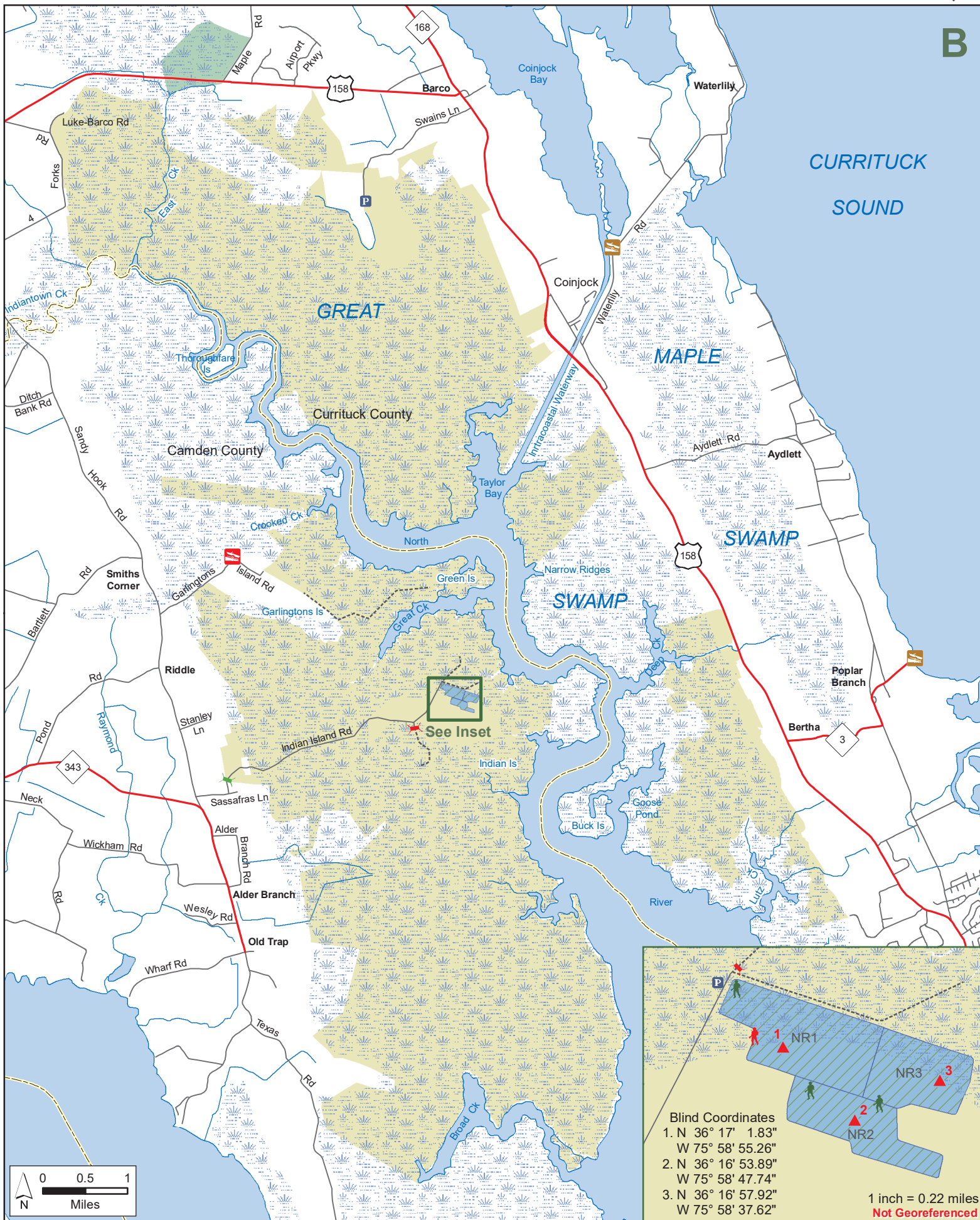


# NORTH RIVER GAME LAND (continued)

N.C. Wildlife Resources Commission  
Camden and Currituck Counties



**B**



See Inset

Blind Coordinates

1. N	36° 17' 1.83"
W	75° 58' 55.26"
2. N	36° 16' 53.89"
W	75° 58' 47.74"
3. N	36° 16' 57.92"
W	75° 58' 37.62"

1 inch = 0.22 miles  
**Not Georeferenced**

