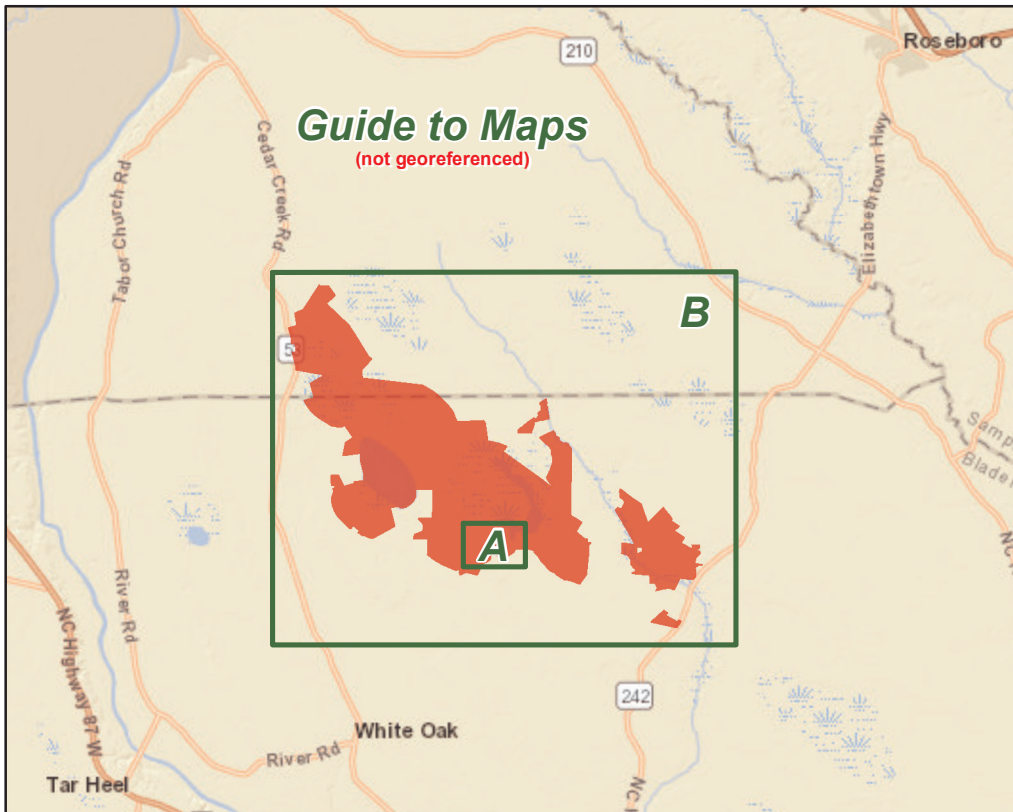
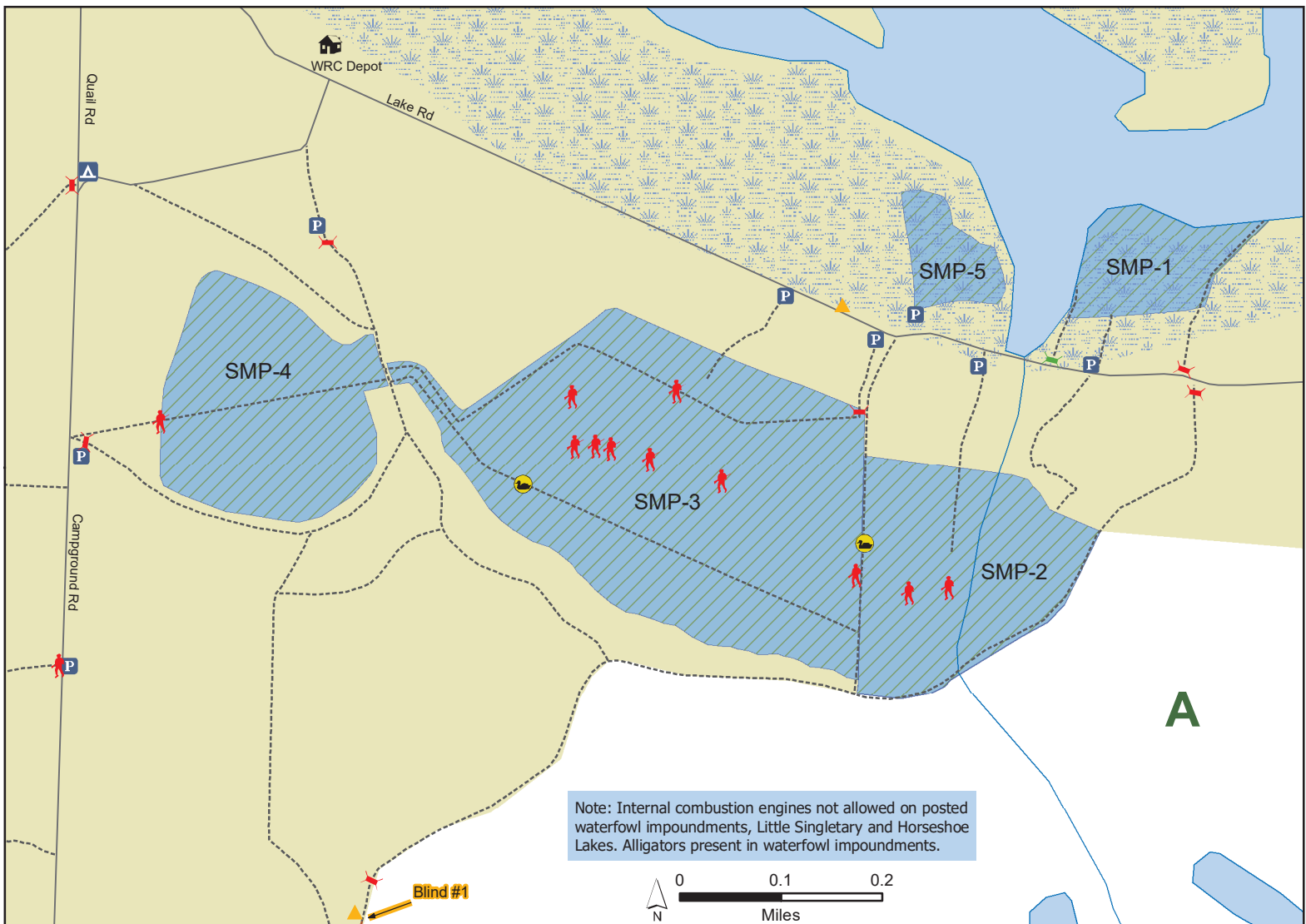


SUGGS MILL POND GAME LAND

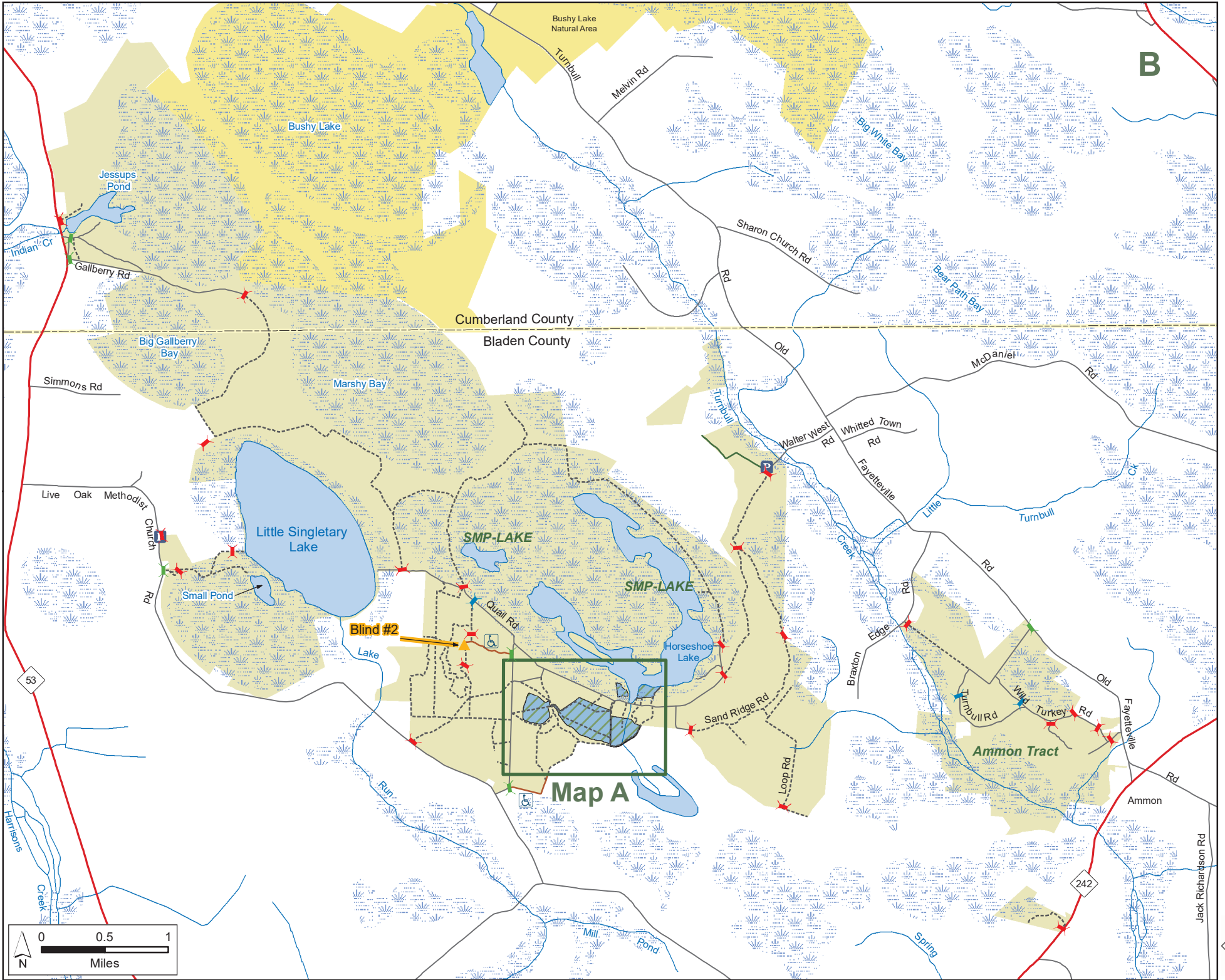
N.C. Wildlife Resources Commission
Bladen and Cumberland Counties (11,110 total acres)



- Designated Camping Area
- Disabled Sportsman Access
- Disabled Sportsman Blind
- Gate Open Sep. 1-Mar. 1, Apr. 1 - End of Turkey Season
- Gate Closed During Turkey Season
- Permanently Closed Gate
- Hunter Bridge
- Public Parking
- Scouting Area
- Waterfowl Blind
- Disabled Sportsman Access Road
- Secondary Road
- Trail
- State Park
- Game Land Type**
- Bear Management Area
- Waterfowl Impoundment



SUGGS MILL POND GAME LAND (continued)
N.C. Wildlife Resources Commission
Bladen and Cumberland Counties



B

