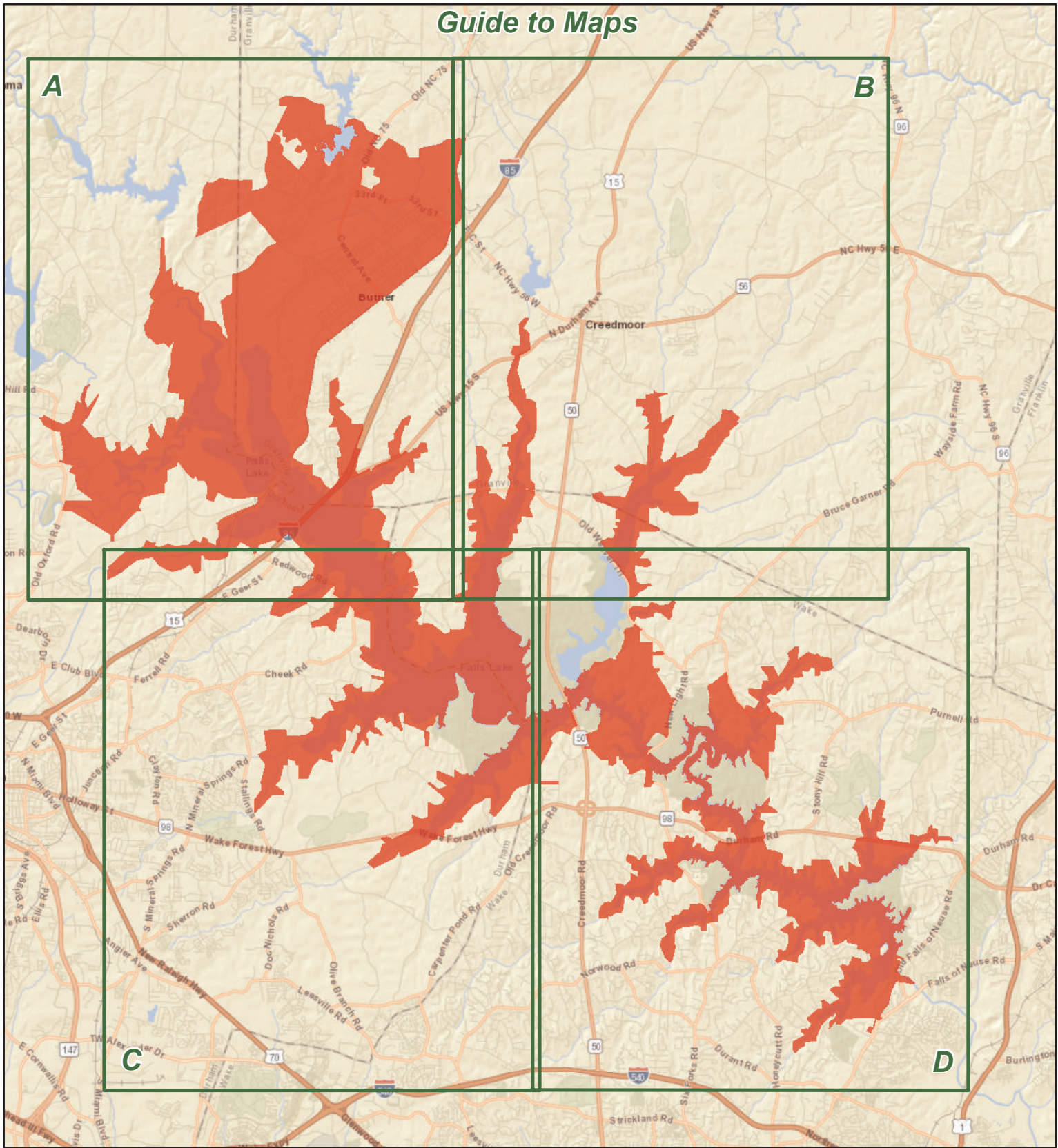


# BUTNER-FALLS OF NEUSE GAME LAND

U.S. Army Corps of Engineers, N.C. Department of Agriculture, N.C. Wildlife Resources Commission  
 Durham, Granville and Wake Counties (40,480 total acres)



## Guide to Maps



### Game Land Type

- Archery Zone
- Game Land
- Restricted Firearms Zone
- Safety Zone
- Waterfowl Impoundment
- Federal Land

- Designated Camping Area
- Disabled Sportsman Blind
- Permanently Closed Gate
- Seasonally Closed Gate
- Public Parking
- Non-WRC Boating Access
- WRC Boating Access Area

- Public Fishing Area
- Hunter Vehicle Access Road
- Secondary Road
- Trail

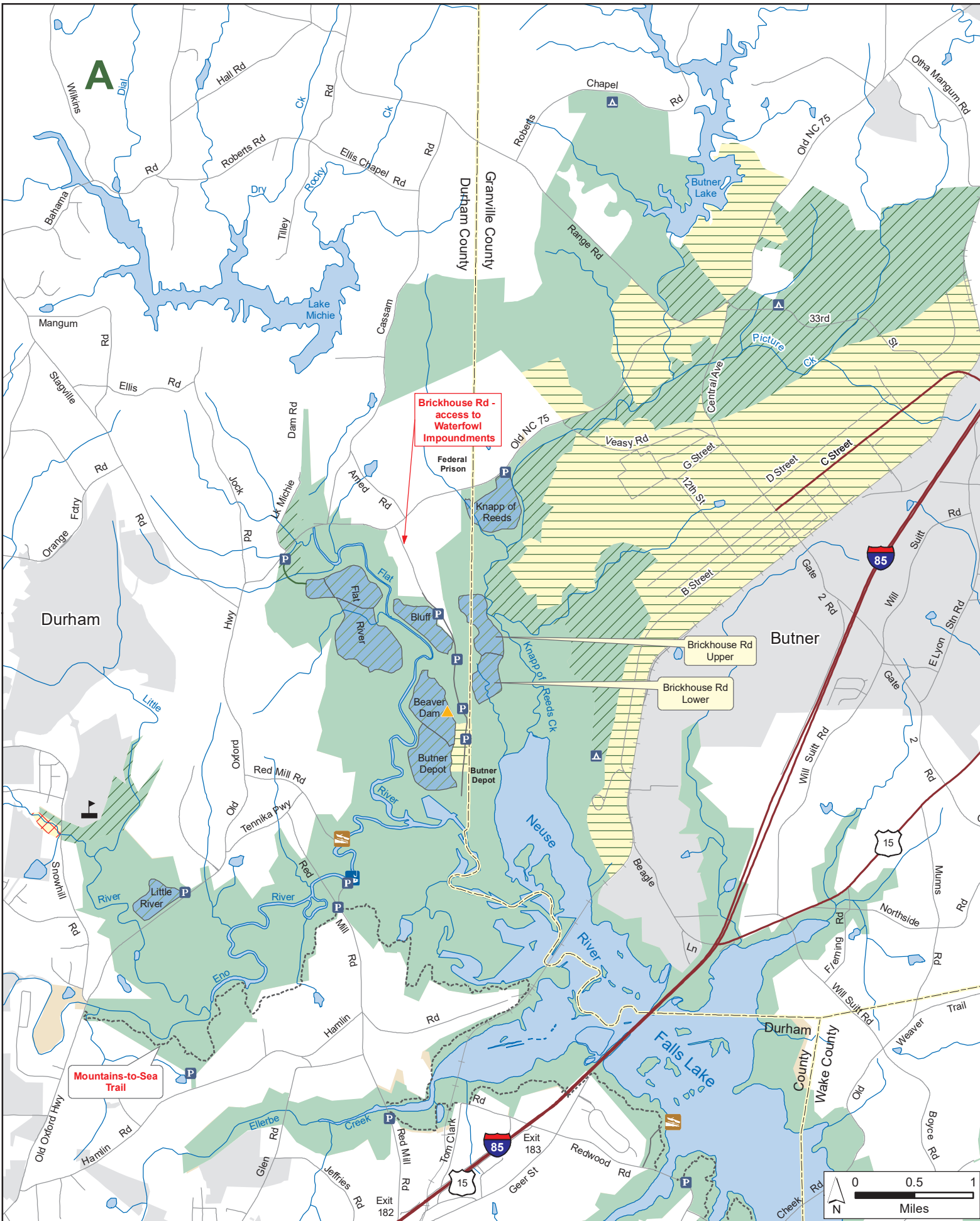
Note: 2023-2024 Flooding Schedule for Waterfowl Impoundments will not include Brickhouse Road Lower, Little River and Highway 98.  
 Disabled sportsman waterfowl blind is available on Beaver Dam Impoundment. Unless otherwise noted, the surface area of Falls Lake is game land.  
 Safety Alert: Hikers may be encountered along the Mountains-to-Sea Trail.





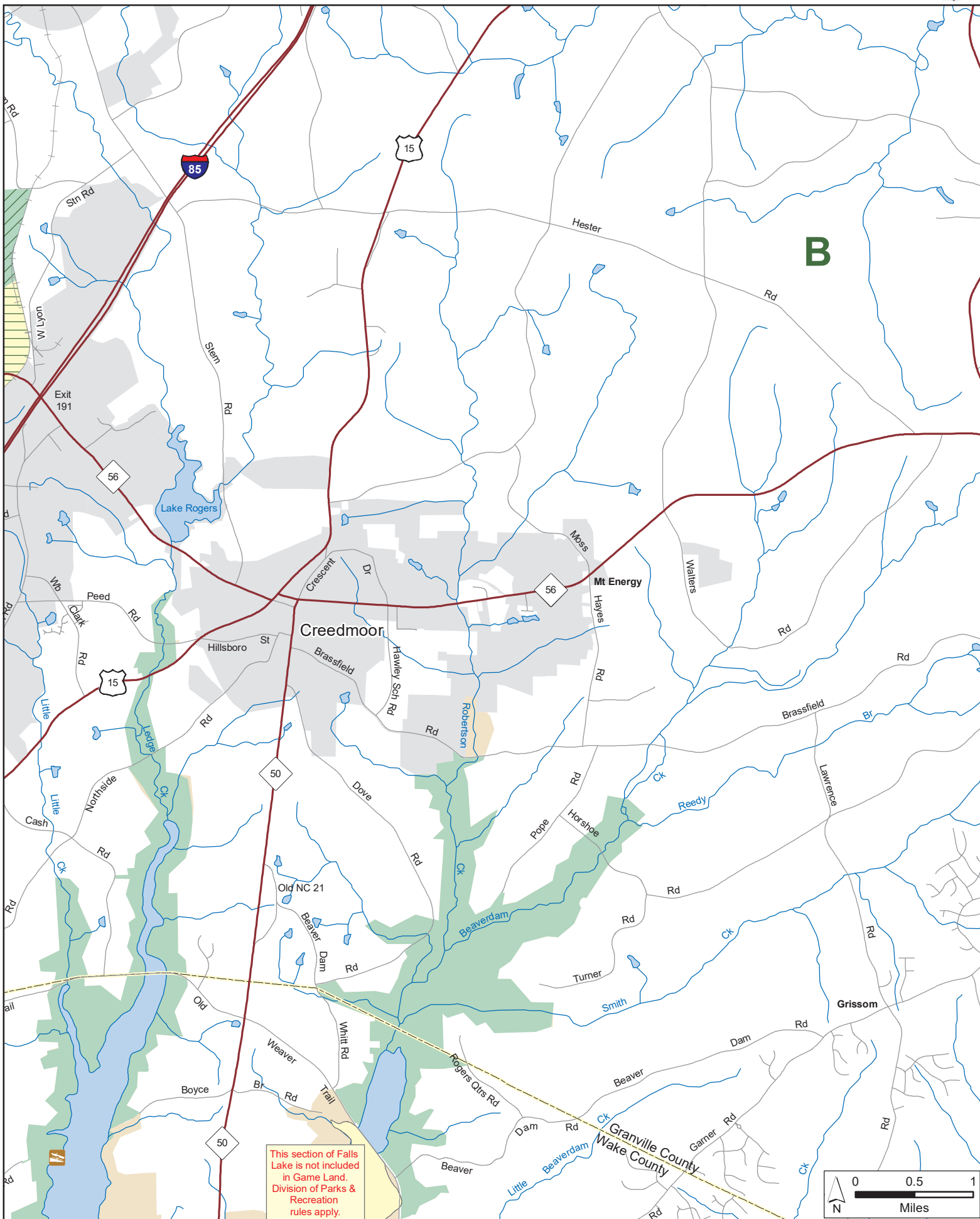
# BUTNER-FALLS OF NEUSE GAME LAND (continued)

U.S. Army Corps of Engineers, N.C. Department of Agriculture, N.C. Wildlife Resources Commission  
Durham, Granville and Wake Counties



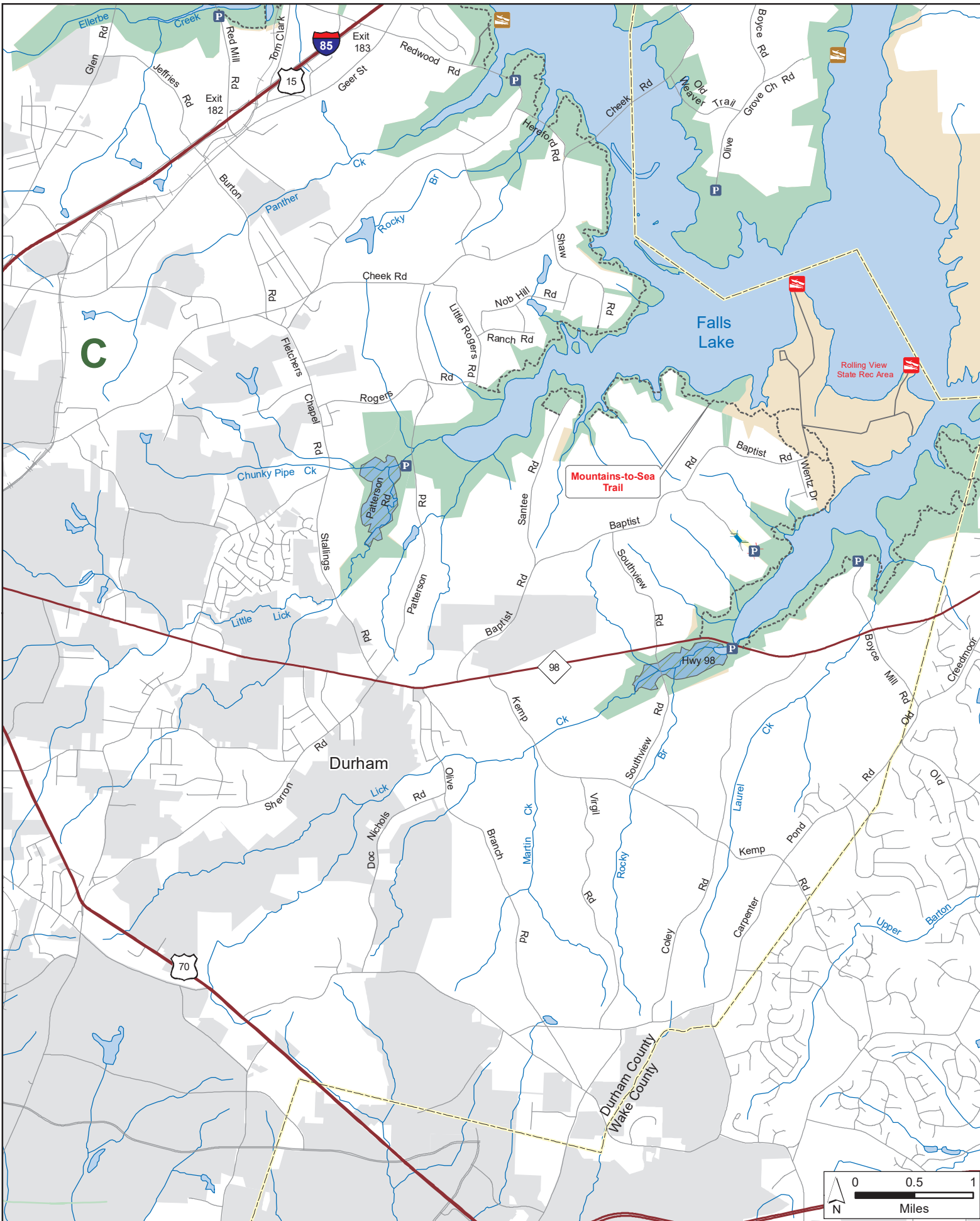
# BUTNER-FALLS OF NEUSE GAME LAND (continued)

U.S. Army Corps of Engineers, N.C. Department of Agriculture, N.C. Wildlife Resources Commission  
Durham, Granville and Wake Counties



# BUTNER-FALLS OF NEUSE GAME LAND (continued)

U.S. Army Corps of Engineers, N.C. Department of Agriculture, N.C. Wildlife Resources Commission  
Durham, Granville and Wake Counties





# BUTNER-FALLS OF NEUSE GAME LAND (continued)

U.S. Army Corps of Engineers, N.C. Department of Agriculture, N.C. Wildlife Resources Commission  
Durham, Granville and Wake Counties



This section of Falls Lake is not included in Game Land. Division of Parks & Recreation rules apply.

D

Mountains-to-Sea Trail

Falls Lake Dam Res Area

Raleigh

