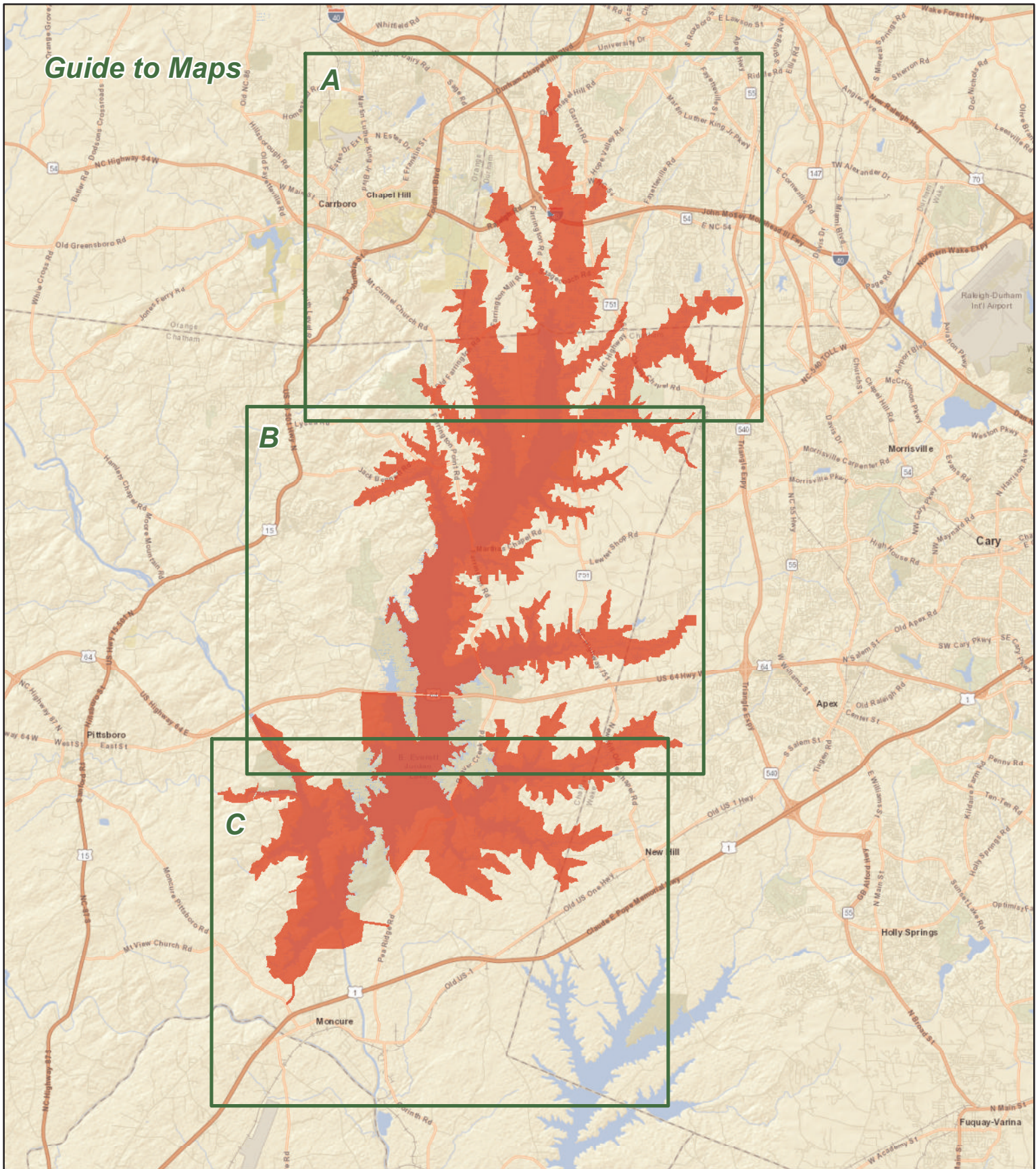


JORDAN GAME LAND

U.S. Army Corps of Engineers, N.C. Wildlife Resources Commission
Chatham, Durham, Orange and Wake Counties (40,460 total acres)



Guide to Maps



Game Land Type

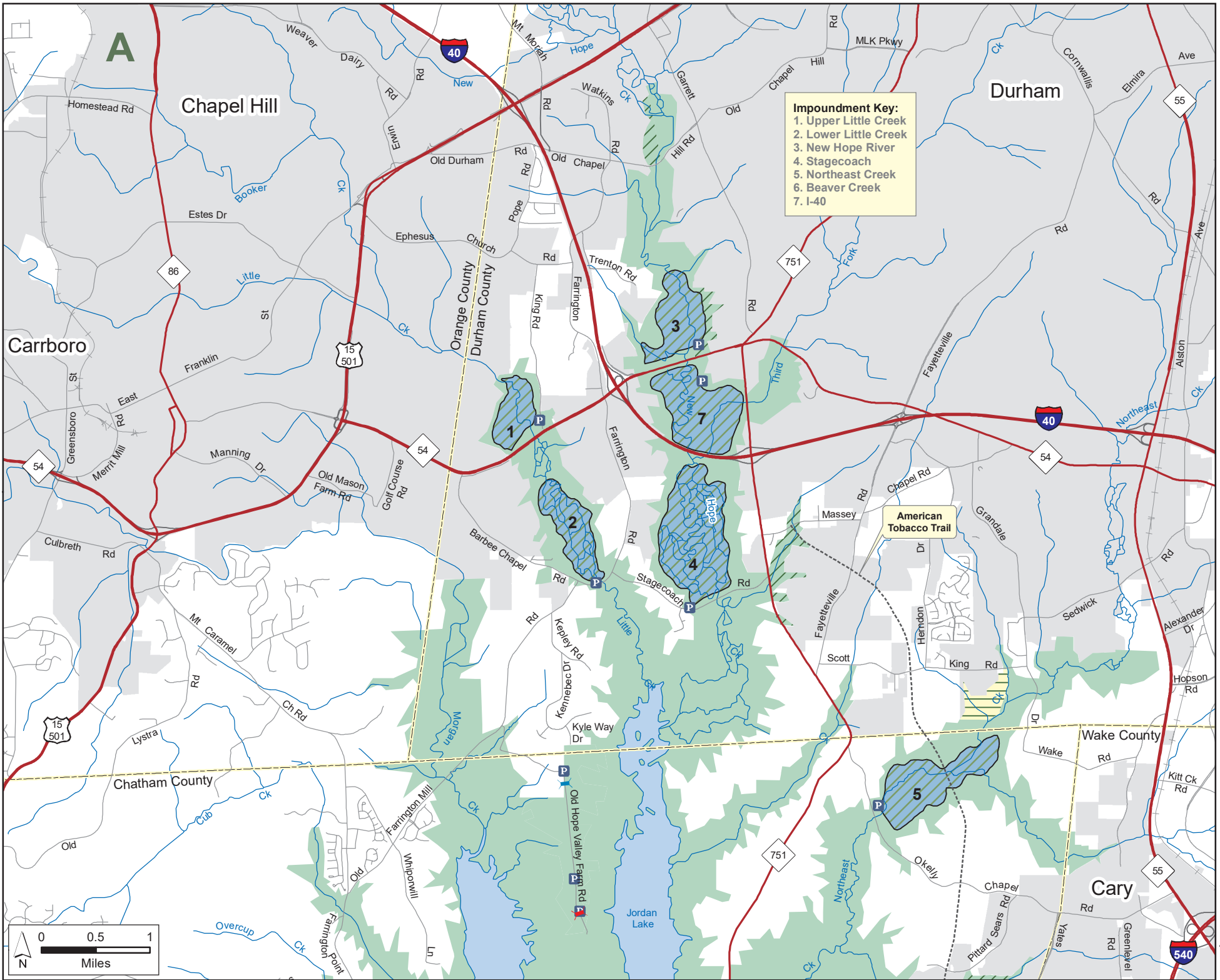
- Archery Zone
- Game Land
- Safety Zone
- Waterfowl Impoundment

- Designated Camping Area
- Observation Deck
- Permanently Closed Gate
- Seasonally Closed Gate
- Public Parking

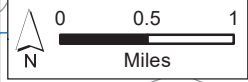
- Non-WRC Boating Access
- WRC Boating Access Area
- Public Fishing Area
- Secondary Road
- Trail

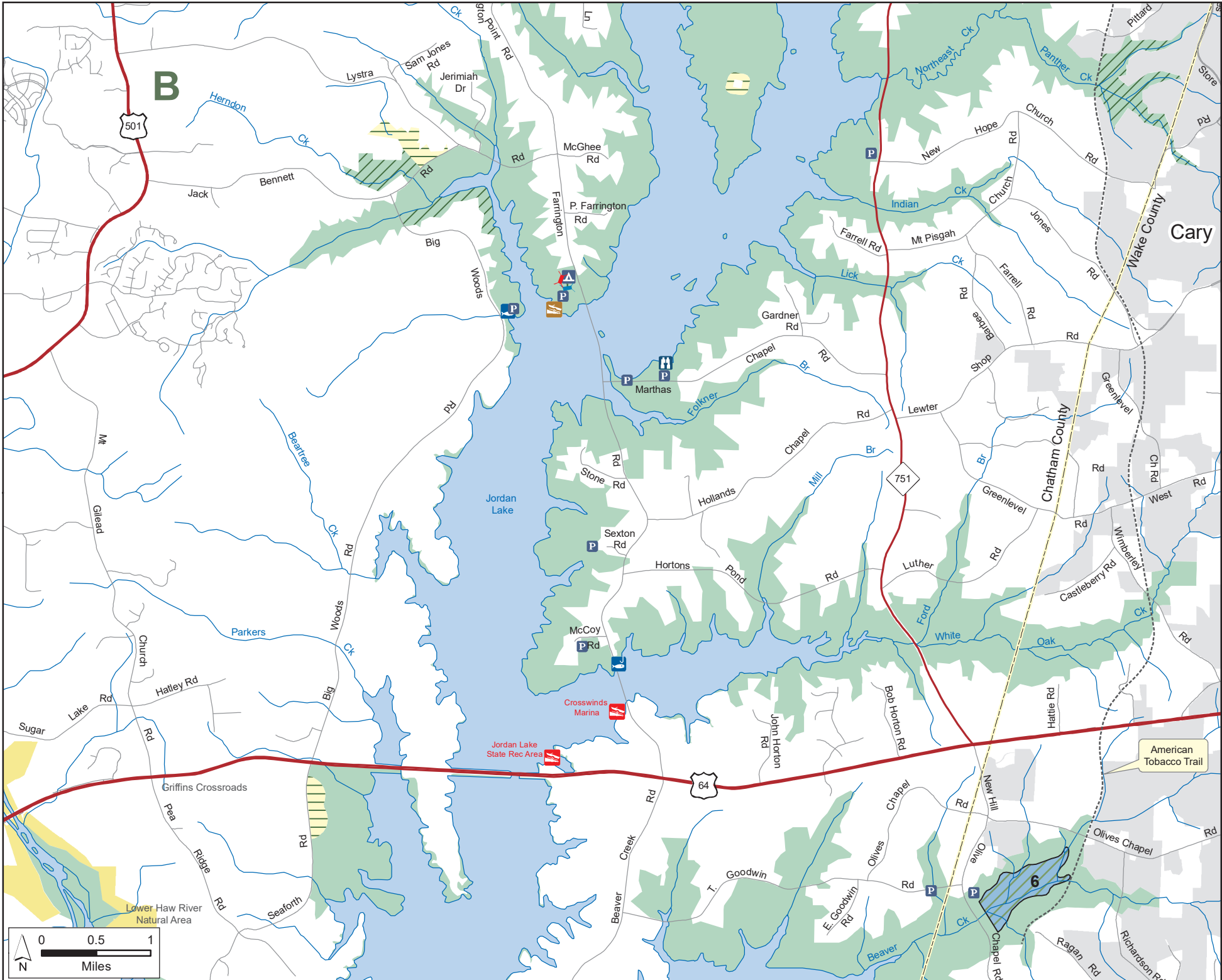
Note: 2023-2024 Flooding Schedule for Numbered Waterfowl Impoundments includes Nos. 1, 4, and 6. Special regulations apply on American Tobacco Trail. All of the surface area of Jordan Lake is game land.

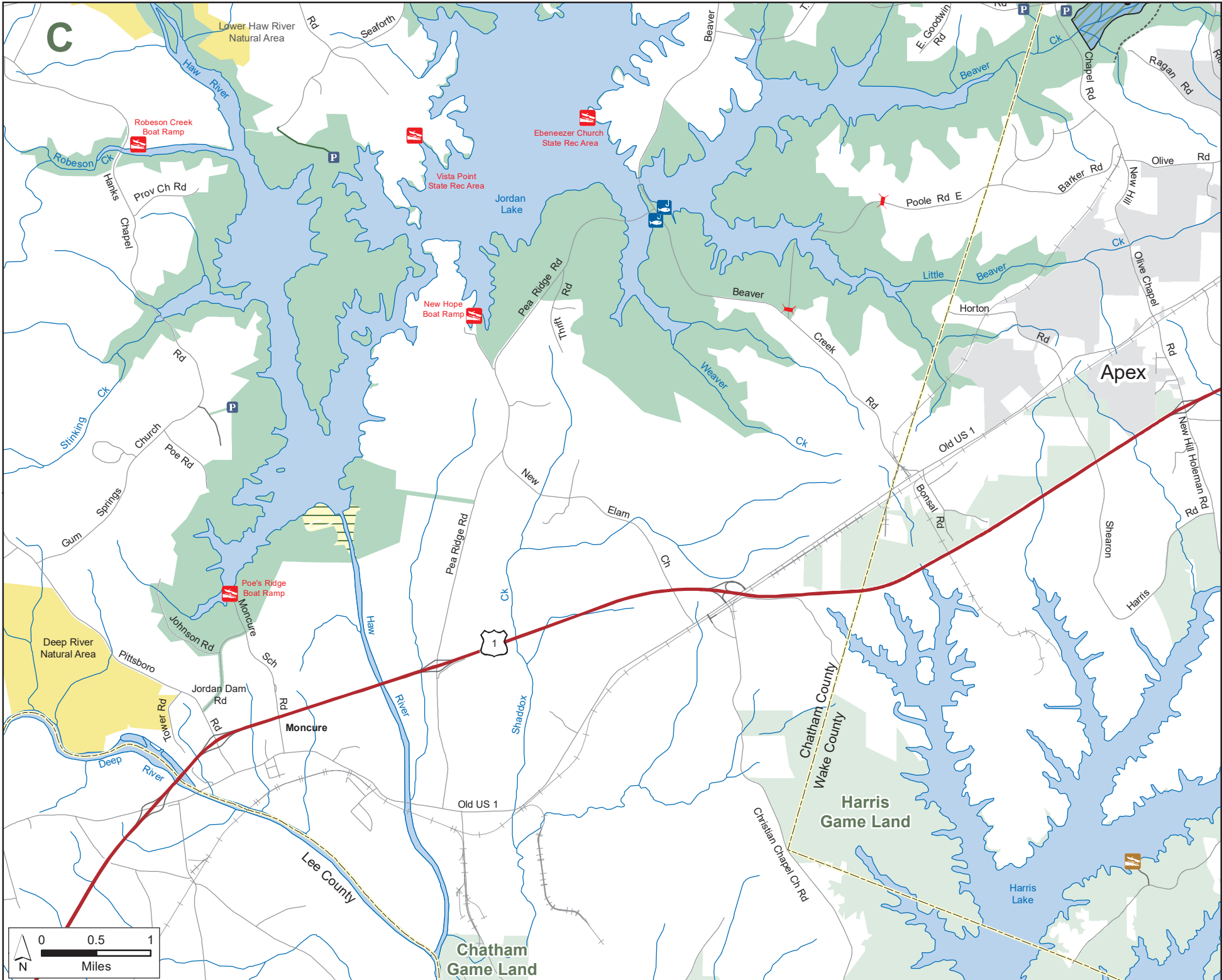




JORDAN GAME LAND (continued)
U.S. Army Corps of Engineers, N.C. Wildlife Resources Commission
Chatham, Durham, Orange and Wake Counties







JORDAN GAME LAND (continued)
 U.S. Army Corps of Engineers, N.C. Wildlife Resources Commission
 Chatham, Durham, Orange and Wake Counties

