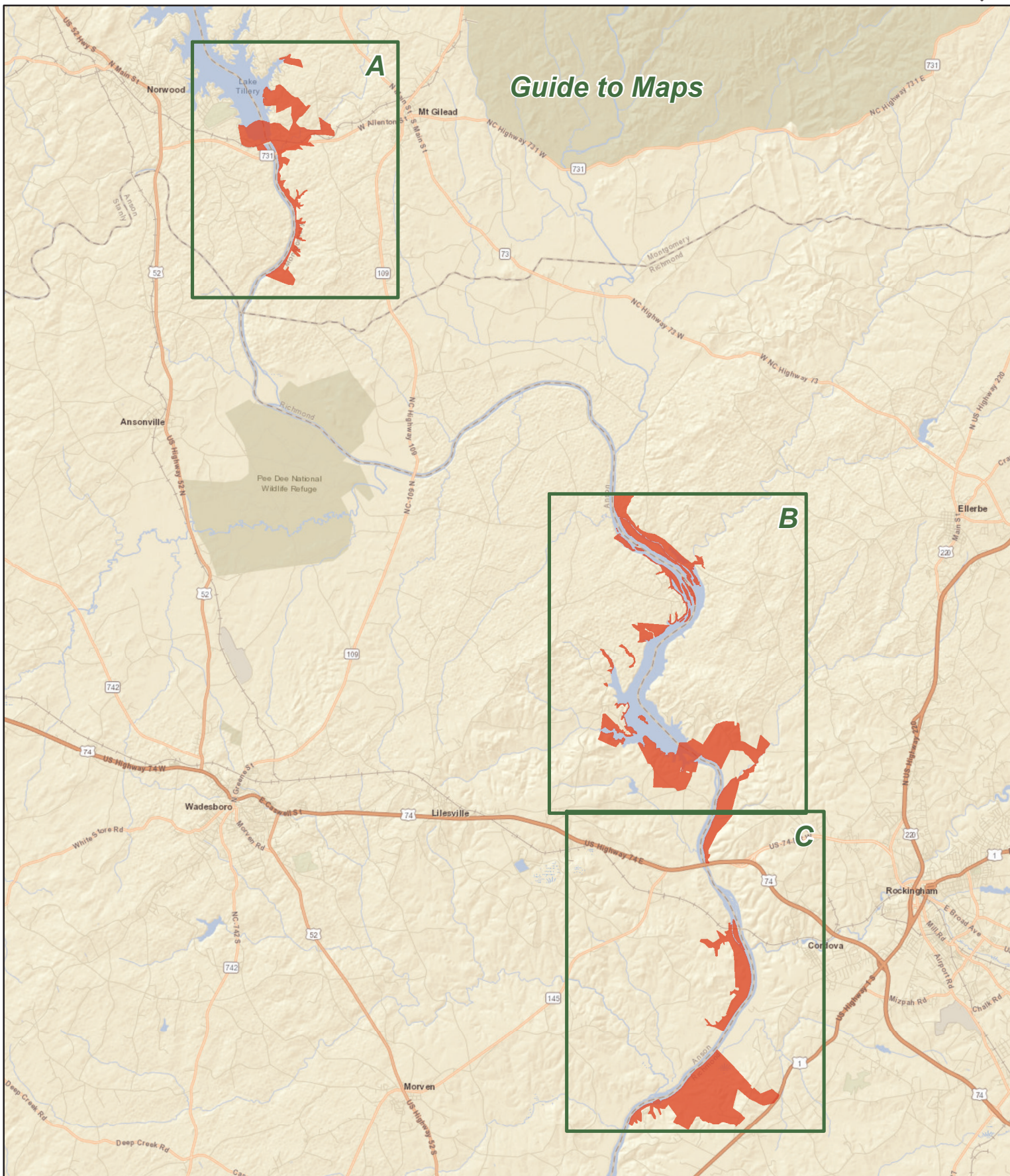


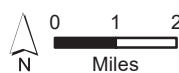
# PEE DEE RIVER GAME LAND

Duke Energy Progress, N.C. Wildlife Resources Commission  
 Anson, Montgomery, Richmond and Stanly Counties (6,320 total acres)



## Guide to Maps

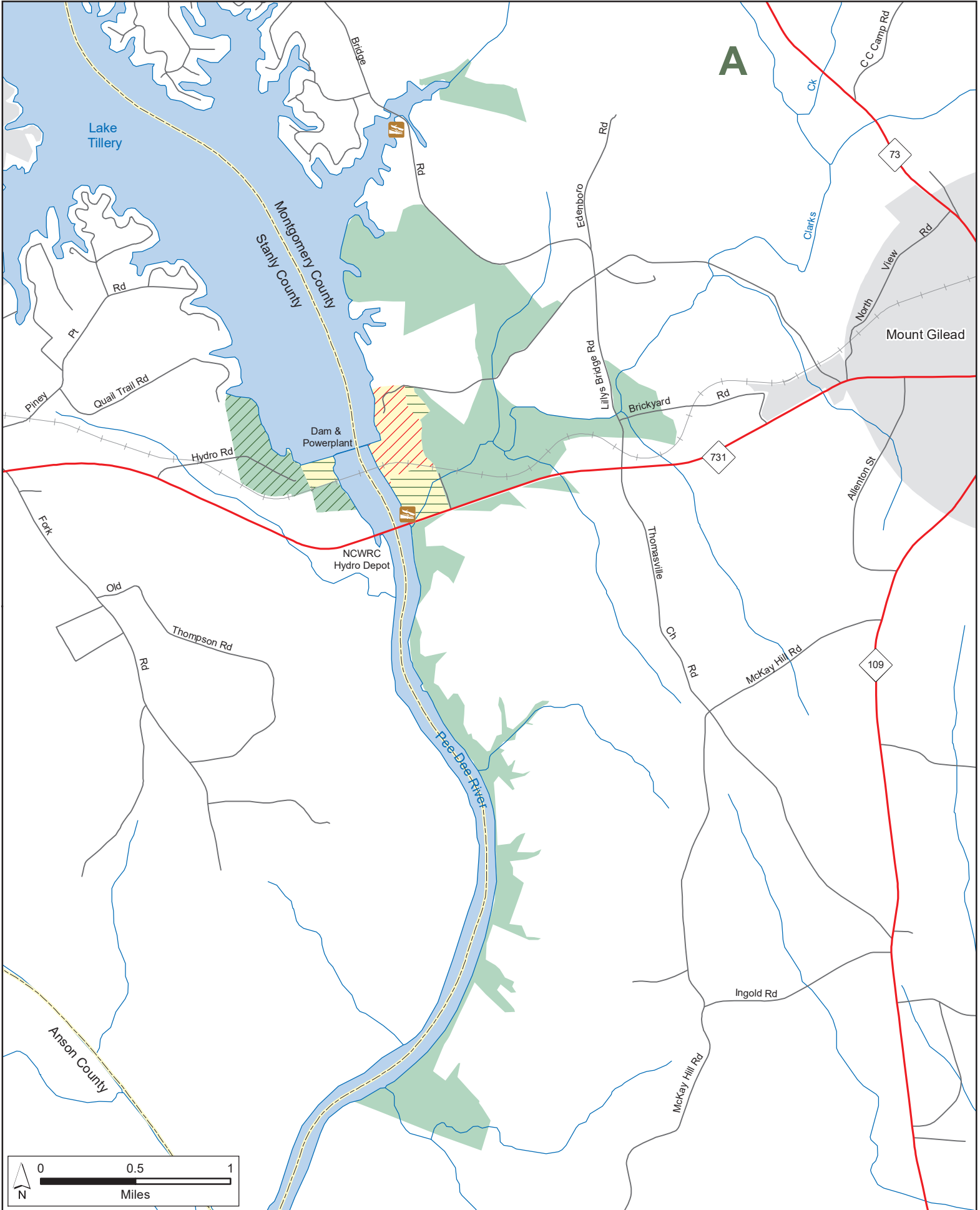
- |                          |                    |                 |
|--------------------------|--------------------|-----------------|
| Designated Camping Area  | Hunter Access Road | Archery Zone    |
| Disabled Sportsman Blind | Secondary Road     | Game Land       |
| Public Parking           | Trail              | Restricted Zone |
| WRC Boating Access Area  |                    | Safety Zone     |



Notes: Camping in designated areas only.  
 All of the surface area of Blewett Falls Lake is game land.  
 The high water mark of Blewett Falls Lake is the game land boundary.

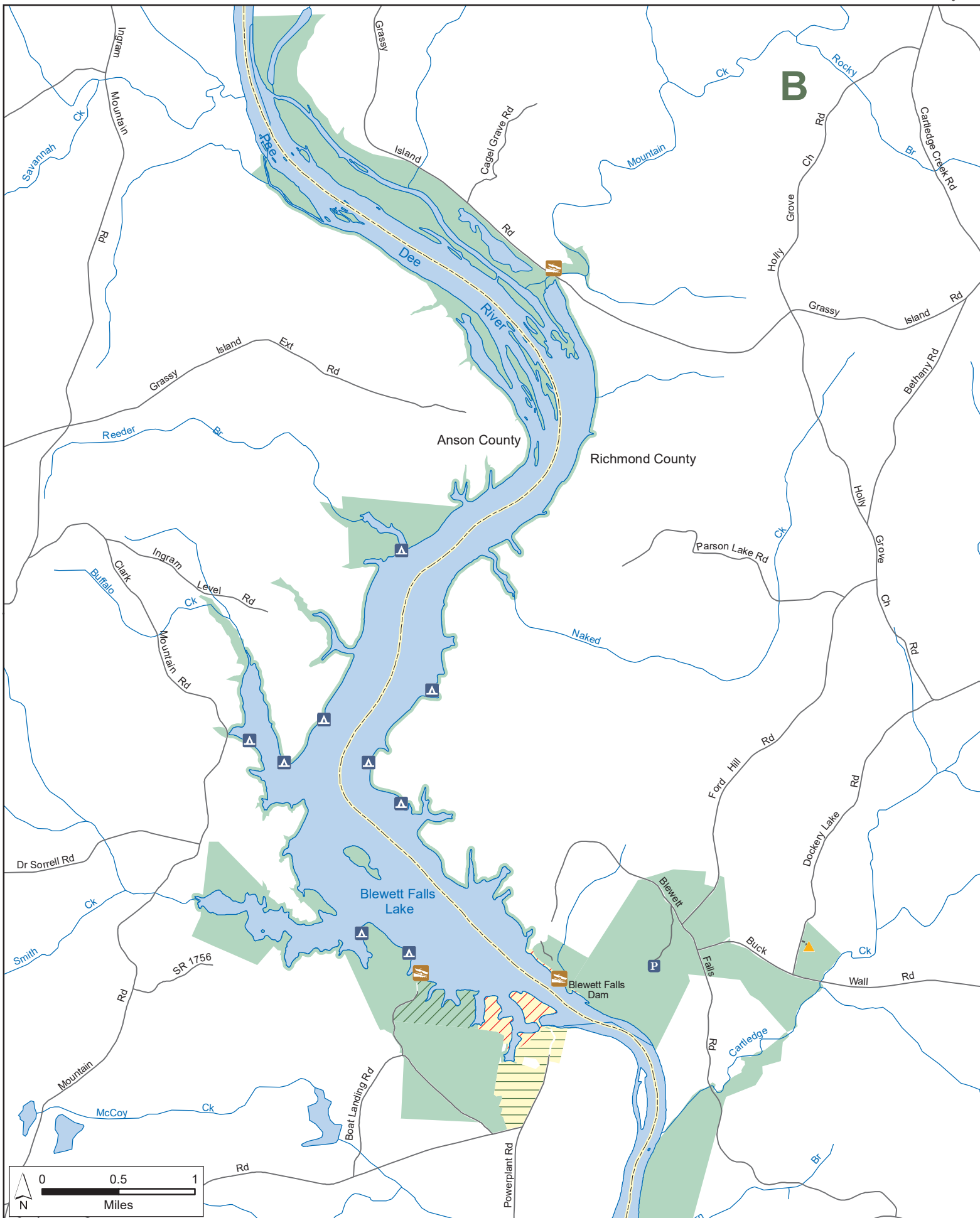
# PEE DEE RIVER GAME LAND (continued)

Duke Energy Progress, N.C. Wildlife Resources Commission  
Anson, Montgomery, Richmond and Stanly Counties



# PEE DEE RIVER GAME LAND (continued)

Duke Energy Progress, N.C. Wildlife Resources Commission  
Anson, Montgomery, Richmond and Stanly Counties



# PEE DEE RIVER GAME LAND (continued)

Duke Energy Progress, N.C. Wildlife Resources Commission  
Anson, Montgomery, Richmond and Stanly Counties

