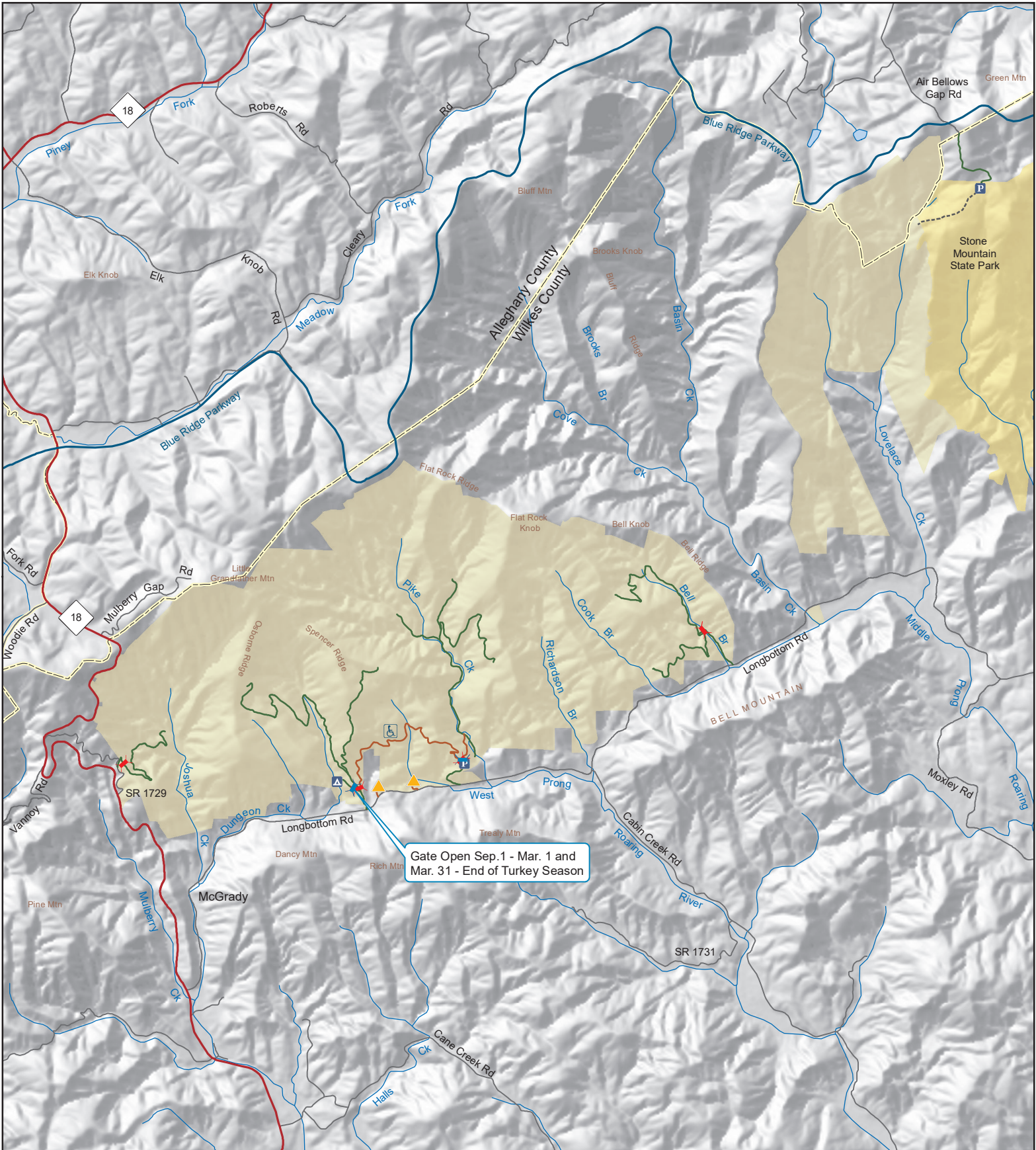


THURMOND CHATHAM GAME LAND

N.C. Wildlife Resources Commission
 Allegheny and Wilkes Counties (6,520 acres)



Gate Open Sep.1 - Mar. 1 and
 Mar. 31 - End of Turkey Season

- | | | |
|--|---------------------------|--------------------------------|
| Gate Open Sep.1 - End of Turkey Season | Disabled Sportsman Access | Hunter Vehicle Access Road |
| Gate Open Sep.1 - Mar. 1 | Disabled Sportsman Blind | Disabled Sportsman Access Road |
| Designated Camping Area | Public Parking | Trail |
| | Bear Management Area | State Park |

