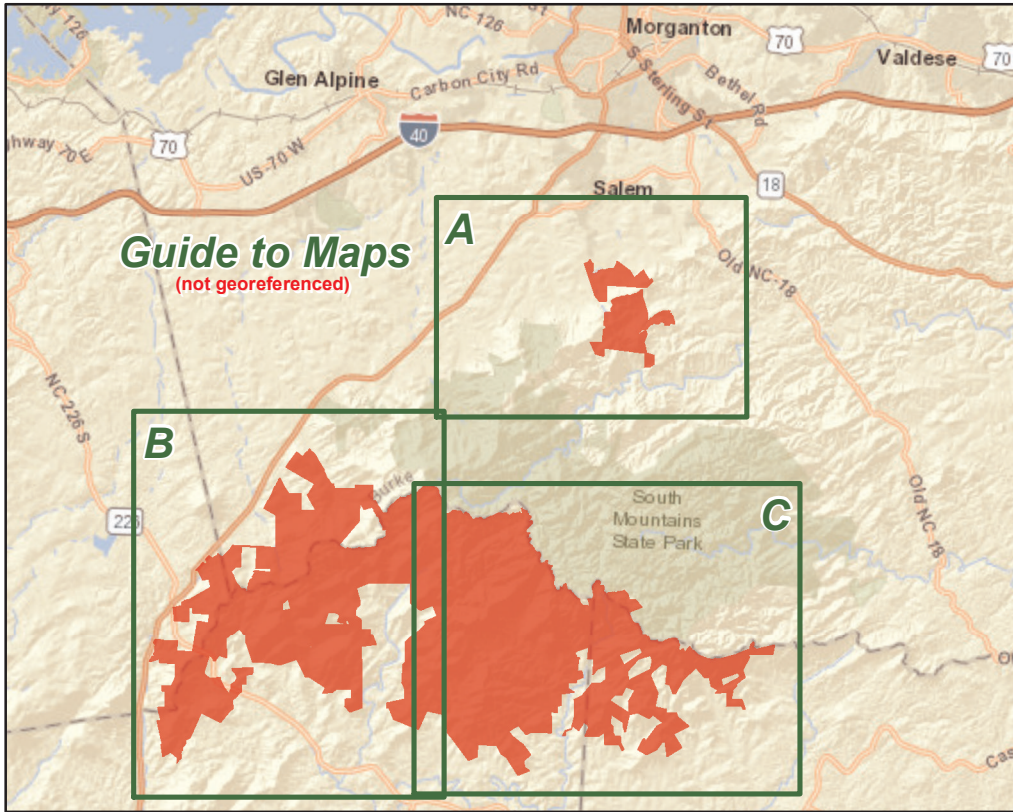
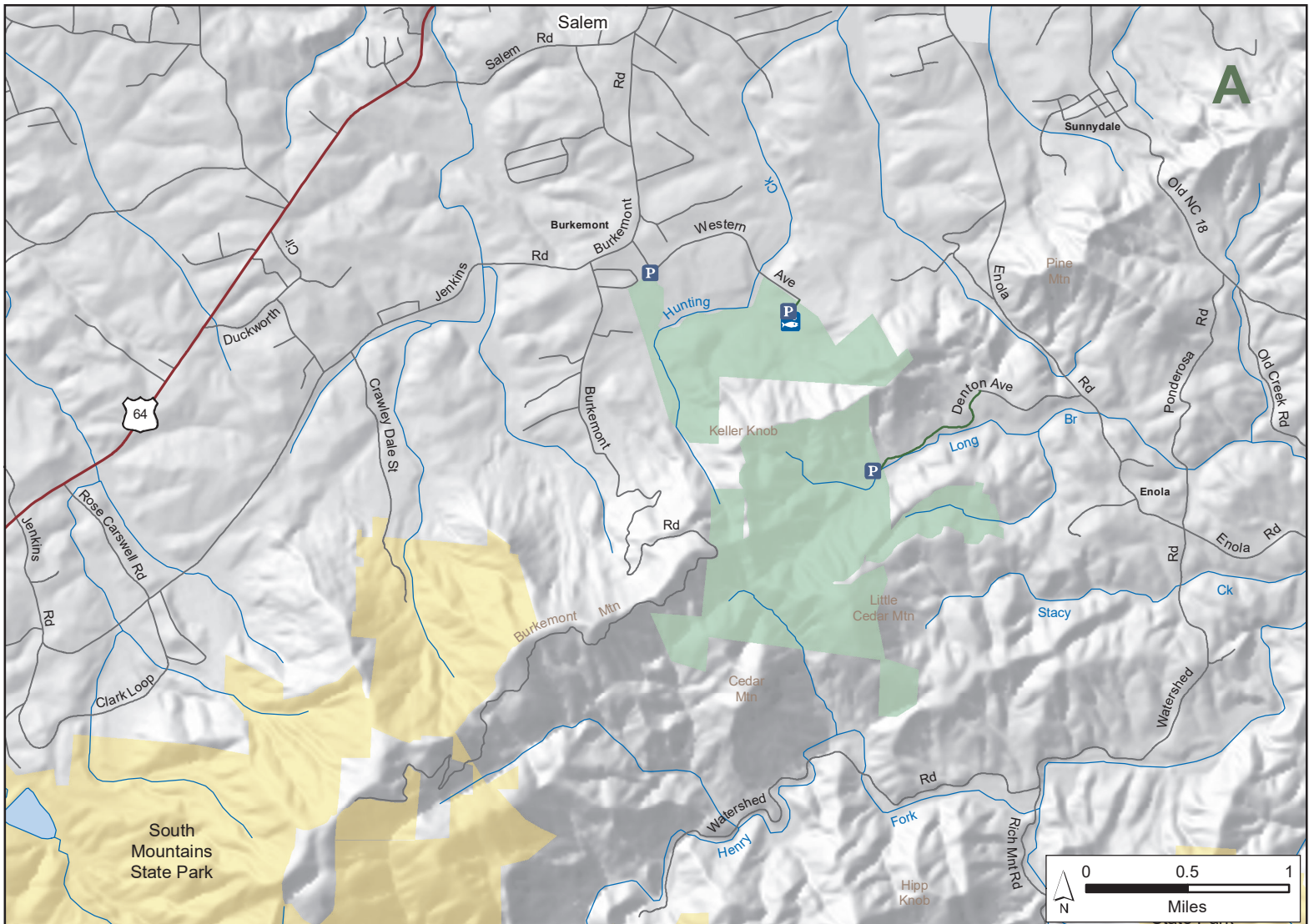


# SOUTH MOUNTAINS GAME LAND

N.C. Wildlife Resources Commission  
 Burke, Cleveland, McDowell and Rutherford Counties (22,580 total acres)

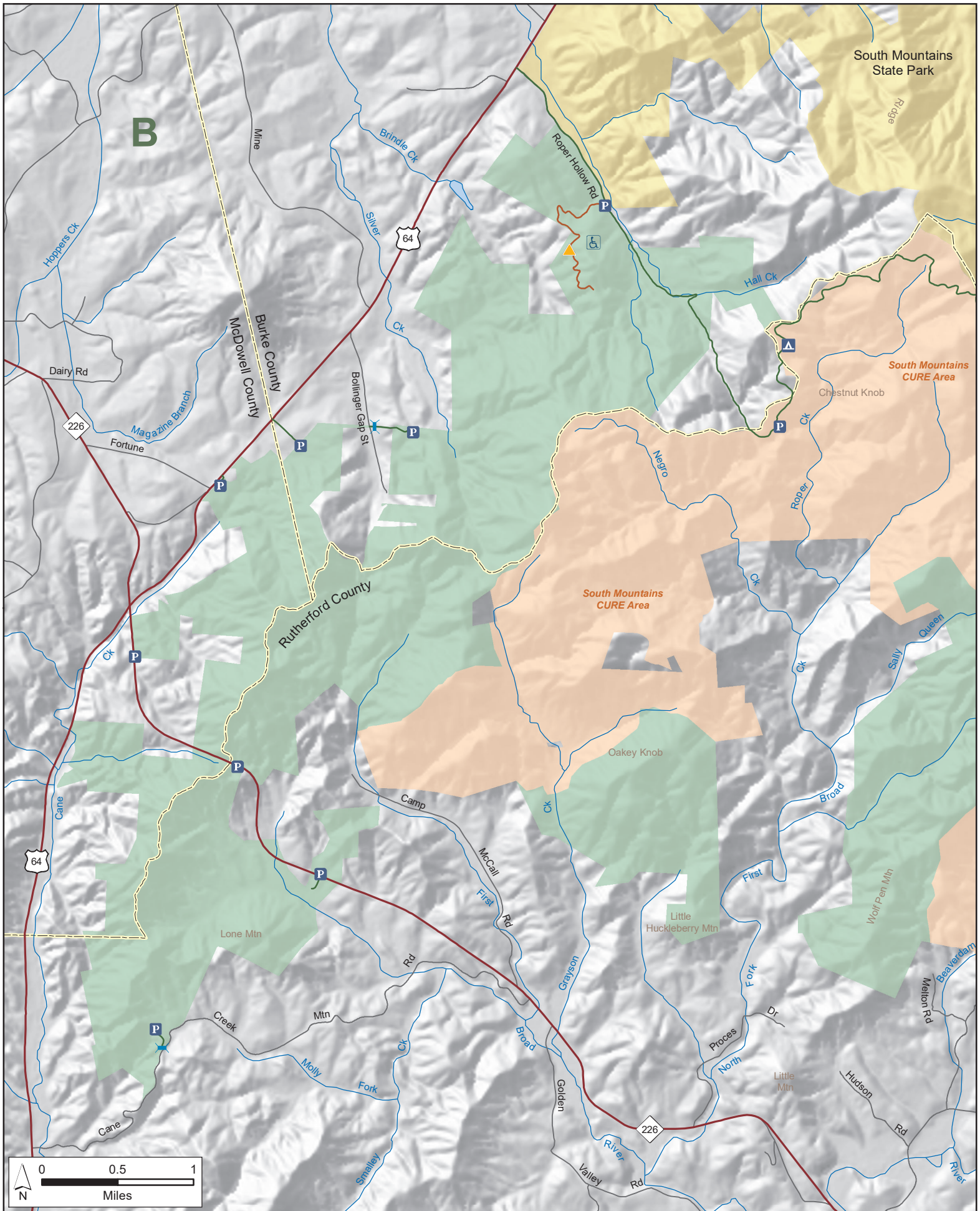


- Gate Open Sep. 1 - Jan. 1 & During Turkey Season
- Disabled Sportsman Blind
- Designated Camping Area
- Public Parking
- Public Fishing Area
- Disabled Sportsman Access Road
- Hunter Vehicle Access Road
- 4WD Hunter Road
- Secondary Road
- State Park
- Game Land Type**
- CURE Area
- Game Land



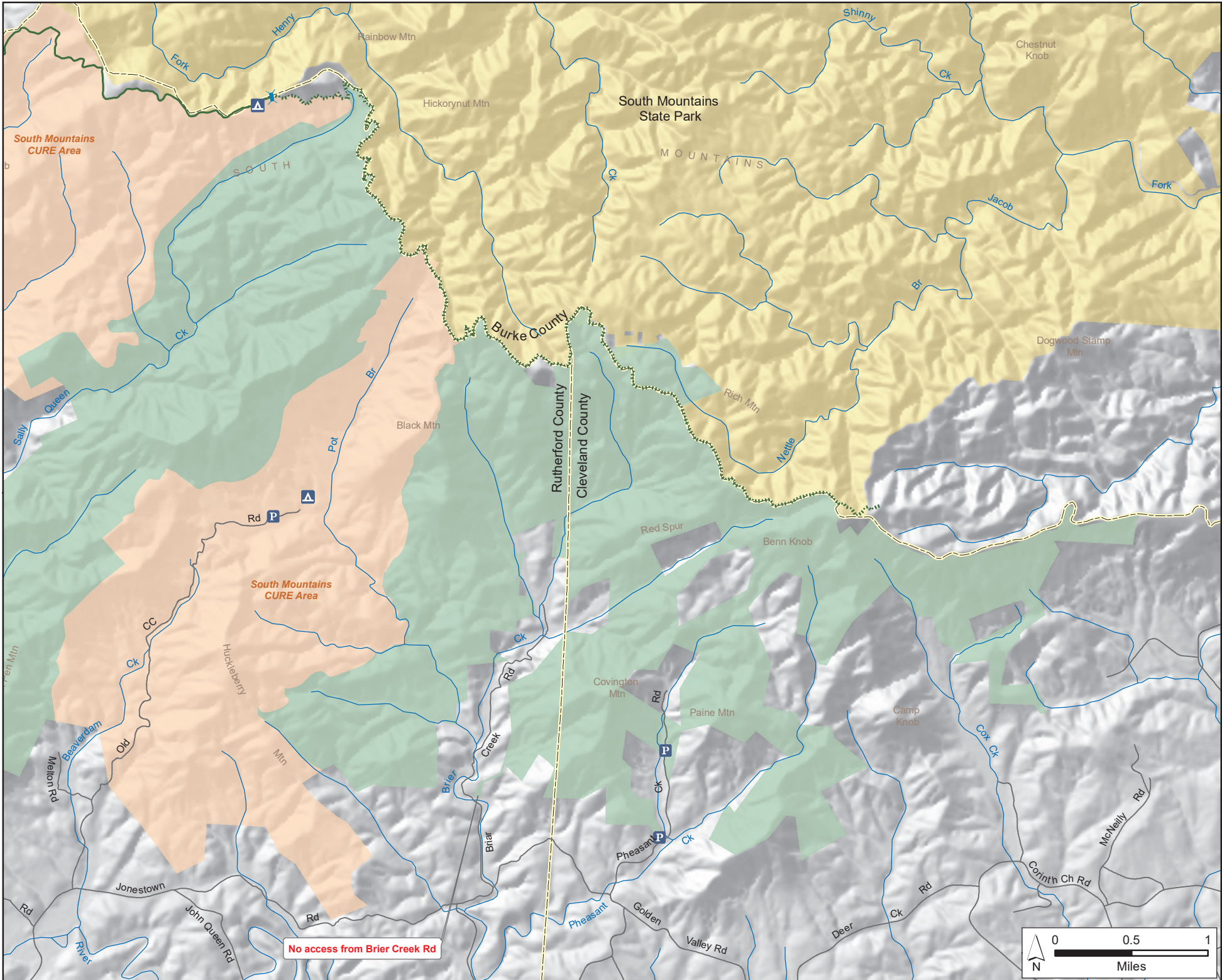
# SOUTH MOUNTAINS GAME LAND (continued)

N.C. Wildlife Resources Commission  
Burke, Cleveland, McDowell and Rutherford Counties



# SOUTH MOUNTAINS GAME LAND (continued)

N.C. Wildlife Resources Commission  
Burke, Cleveland, McDowell and Rutherford Counties



No access from Brier Creek Rd

