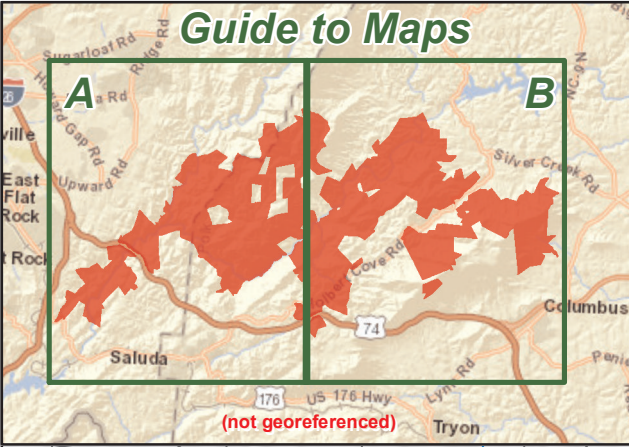


GREEN RIVER GAME LAND

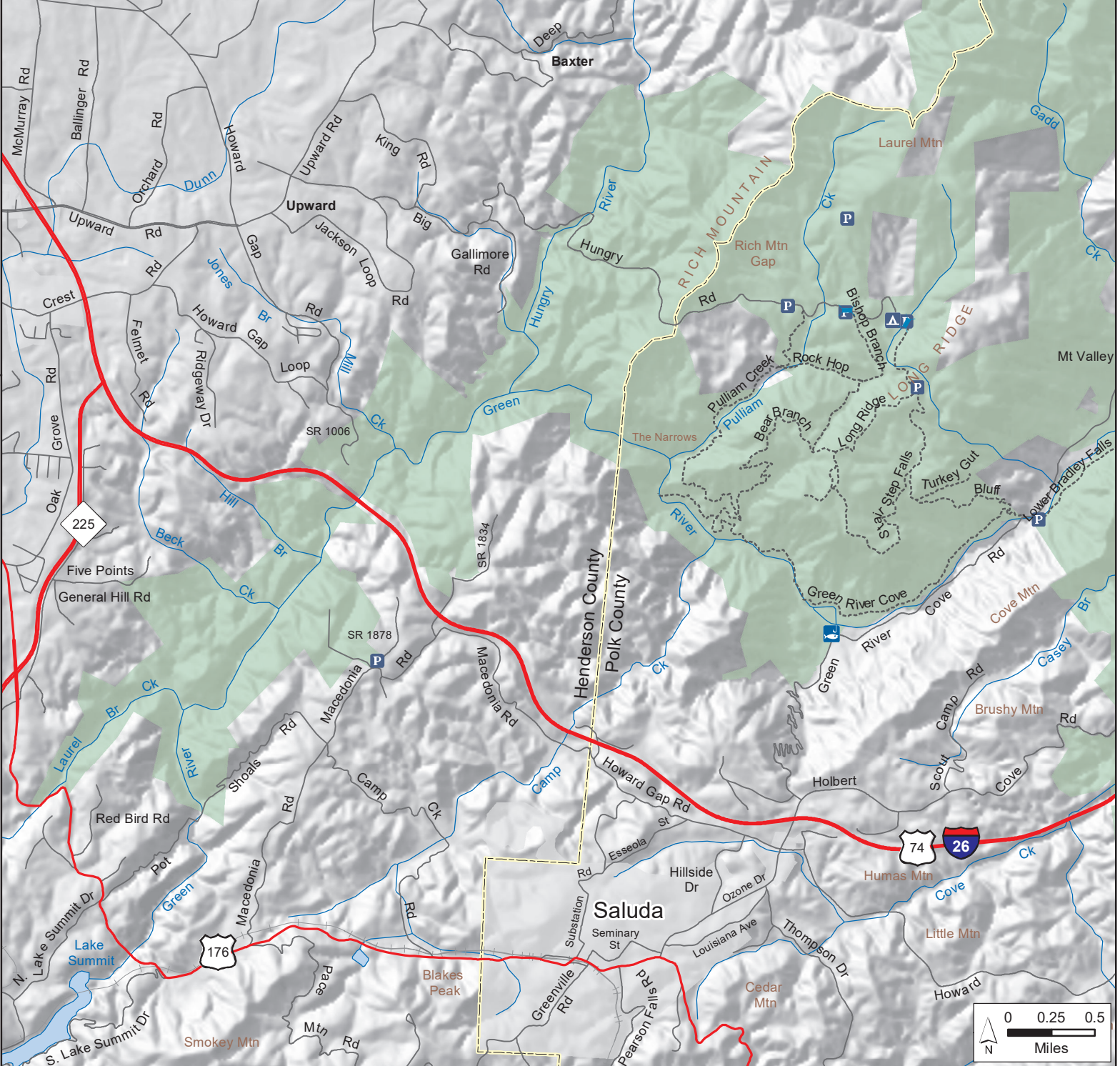
N.C. Wildlife Resources Commission
Henderson and Polk Counties (15,045 total acres)



Guide to Maps

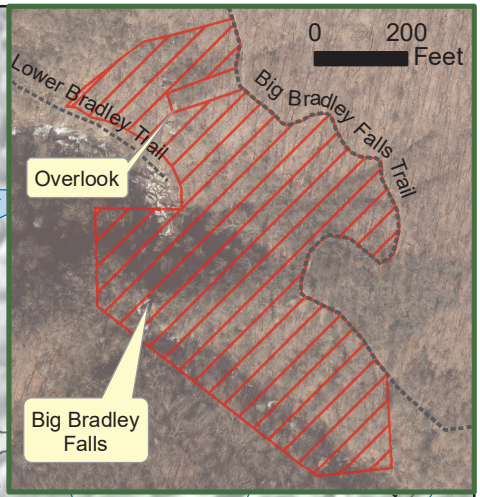
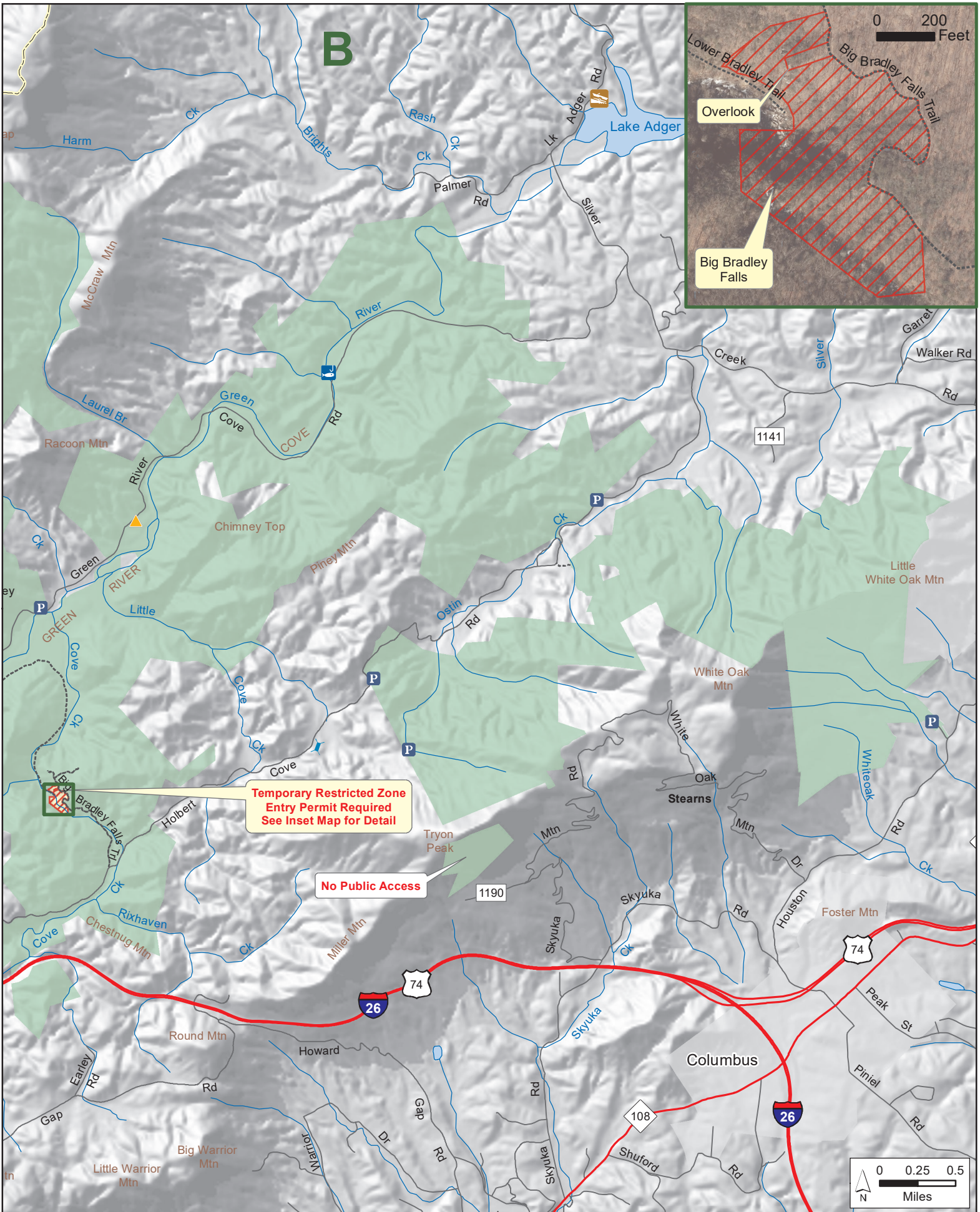


- Designated Camping Area
- Disabled Sportsman Blind
- Gate Open Sep.1 - Jan.1 & During Turkey Season
- Gate Open Sep.1 - Jan.1
- Public Parking
- Public Fishing Area
- WRC Boating Access
- Hunter Access Road
- Secondary Road
- Trail
- Game Land
- Temporary Restricted Zone



GREEN RIVER GAME LAND (continued)

N.C. Wildlife Resources Commission
Henderson and Polk Counties



Temporary Restricted Zone
Entry Permit Required
See Inset Map for Detail

No Public Access

